

# Anti-Thioredoxin Reductase 1 Recombinant Rabbit Monoclonal Antibody



**Catalog #: 3349**

## Aliases

TXNRD1; Thioredoxin Reductase 1; GRIM-12; Trxr1; TXNR; Gene Associated With Retinoic And Interferon-Induced Mortality 12 Protein; Gene Associated With Retinoic And IFN-Induced Mortality 12 Protein; Thioredoxin Reductase 1, Cytoplasmic; KM-102-Derived Reductase-Like Factor; Thioredoxin Reductase TR1; Selenoprotein TXNRD1; Peroxidase TXNRD1; EC 1.8.1.9; TXNR1; TR; Testis Tissue Sperm-Binding Protein Li 46a; Thioredoxin Reductase GRIM-12; Oxidoreductase; EC 1.11.1.2; EC 1.8.1; GRIM12; KDRF; TR1

## Background

Gene Name: TXNRD1

NCBI Gene Entry: [7296](#)

UniProt Entry: [Q16881](#)

## Application Information

Molecular Weight: Predicted, 71 kDa; observed, 55 kDa

Clonality: Rabbit monoclonal antibody

Clone ID: 24GB5240

Species Reactivity: Human, mouse, rat

Applications Tested: Western blotting (WB), flow cytometry (FCM), immunocytochemistry (IC)

## Immunogen

A synthesized peptide derived from human TXNRD1

## Isotype

Rabbit IgG

## Storage Buffer

Supplied in PBS (pH 7.4) containing 50% glycerol, and 0.02% sodium azide.

## Storage

Store at -20 °C for one year.

## Recommended Dilutions

Western Blotting (WB): 1:1,000-1:5,000

Flow Cytometry (FCM): 1:2,000

Immunocytochemistry (IC): 1:100-1:1,000

---

### SUPPORT

SUPPORT@GENUINBIOTECH.COM  
TEL: +1-540-855-7041

### ORDERS

SALES@GENUINBIOTECH.COM  
FAX: +1-540-855-7041

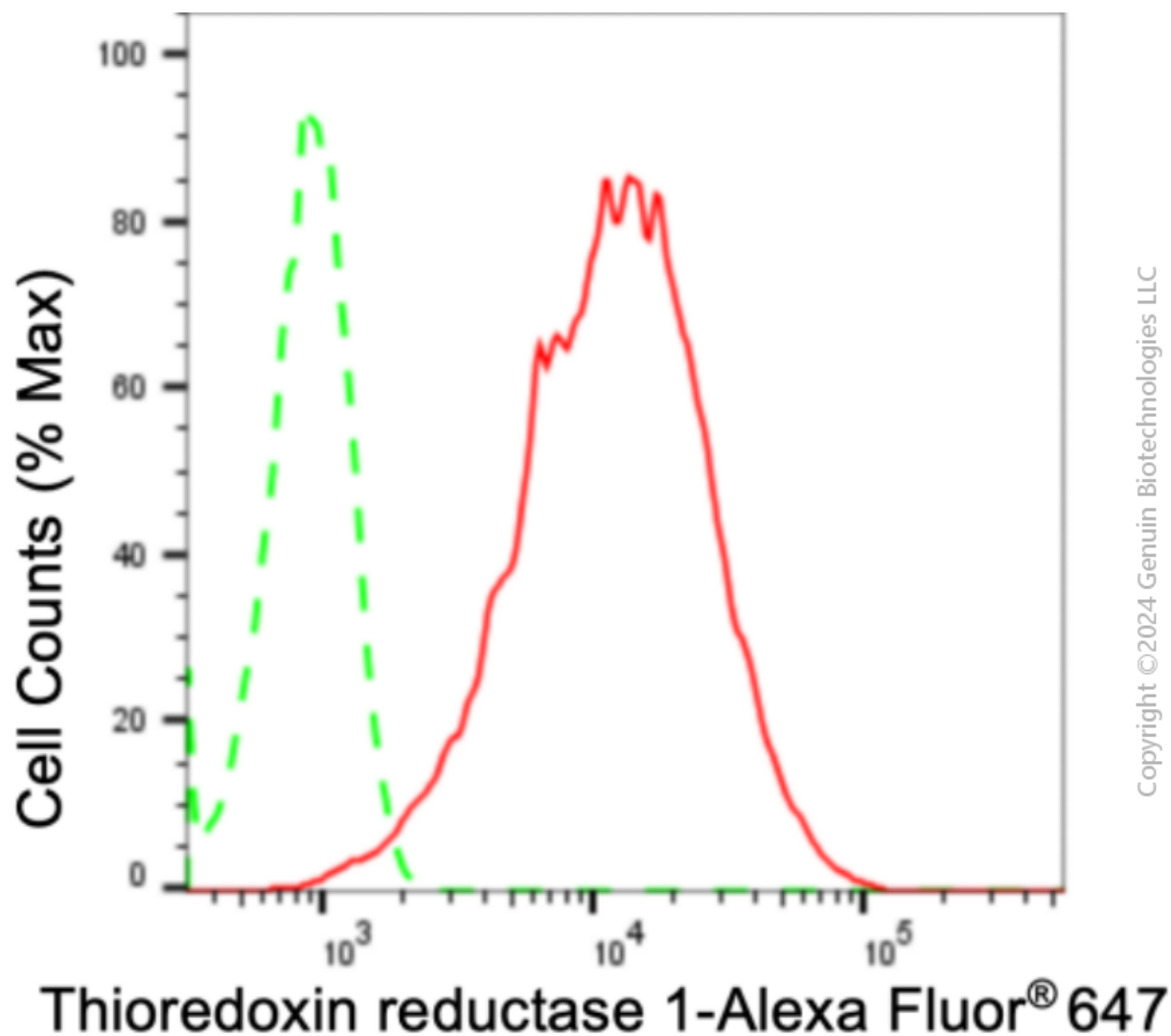
[WWW.GENUINBIOTECH.COM](http://WWW.GENUINBIOTECH.COM)

# Anti-Thioredoxin Reductase 1 Recombinant Rabbit Monoclonal Antibody

PAGE 2

**Note:** This product is for research use only.

## Validation Data



Flow cytometric analysis of thioredoxin reductase 1 expression in HepG2 cells using anti-thioredoxin reductase 1 antibody (Cat#3349, 1:2,000). Green, isotype control; red, thioredoxin reductase 1.

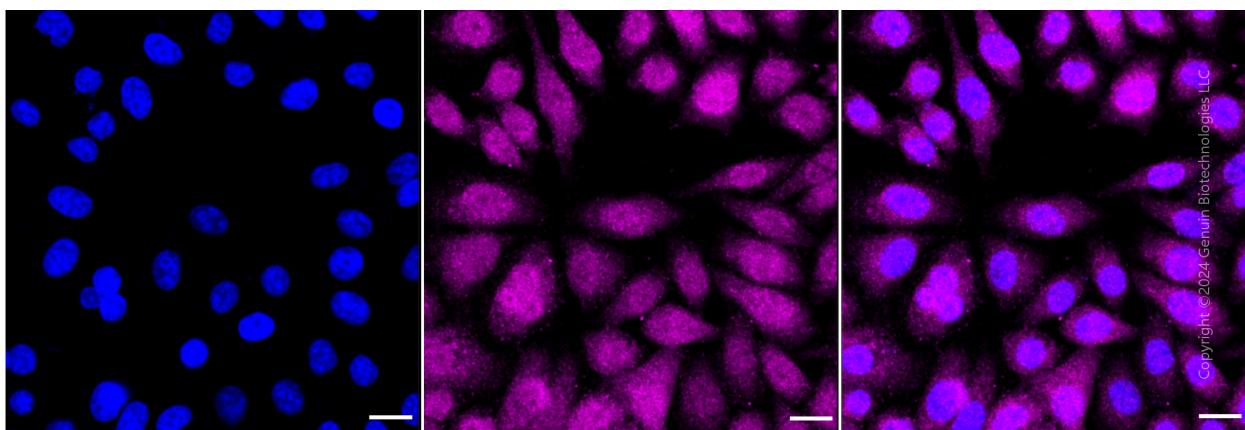
### SUPPORT

SUPPORT@GENUINBIOTECH.COM  
TEL: +1-540-855-7041

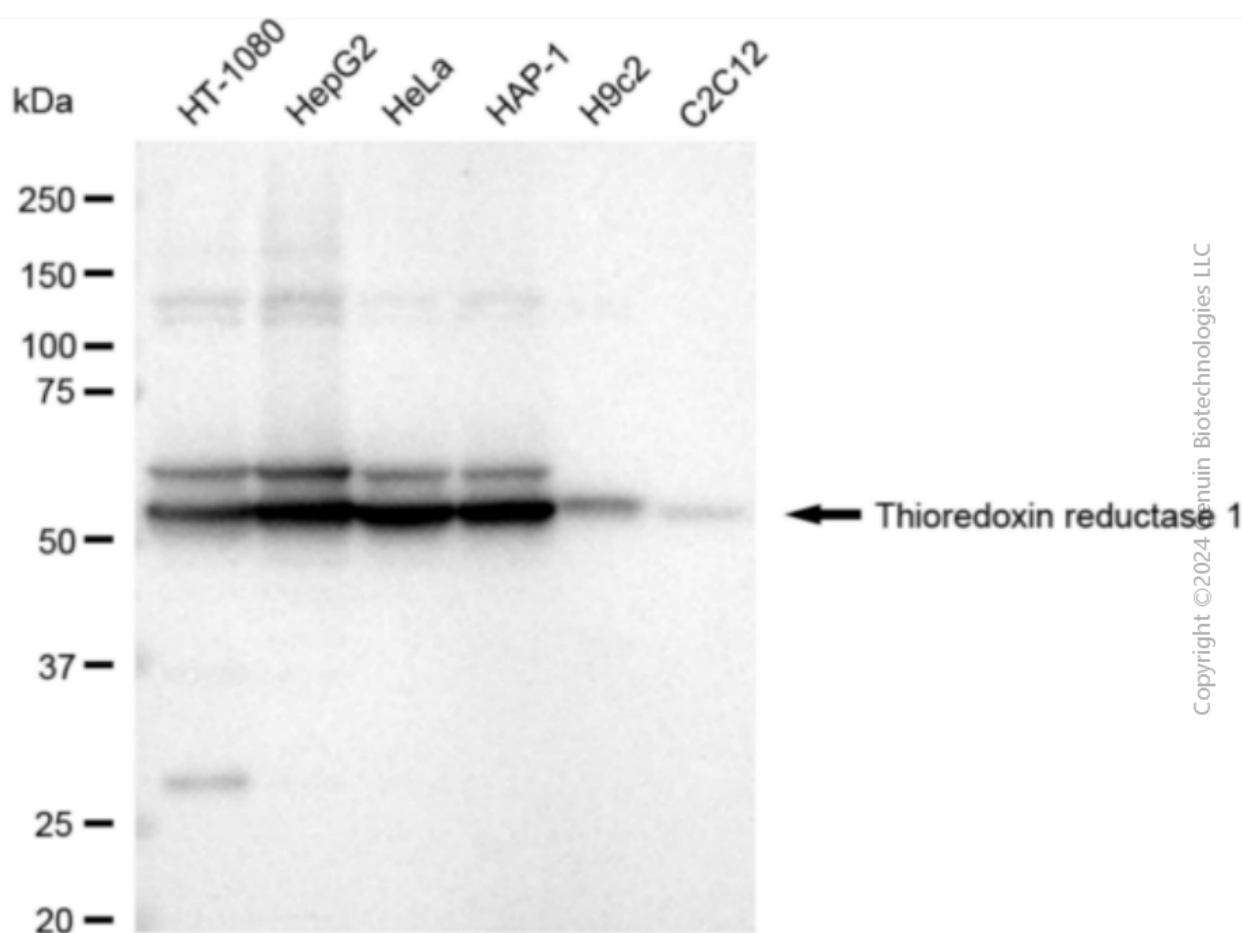
### ORDERS

SALES@GENUINBIOTECH.COM  
FAX: +1-540-855-7041

[WWW.GENUINBIOTECH.COM](http://WWW.GENUINBIOTECH.COM)



Immunocytochemical staining of HepG2 cells with anti-Thioredoxin reductase 1 antibody (Cat#3349, 1:1,000). Nuclei were stained blue with DAPI; Thioredoxin reductase 1 was stained magenta with Alexa Fluor® 647. Images were taken using Leica stellaris 5. Protein abundance based on laser Intensity and smart gain: Meduim. Scale bar: 20  $\mu$ m.



Western blotting analysis using anti-thioredoxin reductase 1 antibody (Cat#3349). Total cell lysates (30  $\mu$ g) from various cell lines were loaded and separated by SDS-PAGE. The blot was incubated with anti-thioredoxin reductase 1 antibody (Cat#3349, 1:5,000) and HRP-conjugated goat anti-rabbit secondary antibody (Cat#201, 1:20,000) respectively. Image was developed using

## SUPPORT

SUPPORT@GENUINBIOTECH.COM  
TEL: +1-540-855-7041

## ORDERS

SALES@GENUINBIOTECH.COM  
FAX: +1-540-855-7041

[WWW.GENUINBIOTECH.COM](http://WWW.GENUINBIOTECH.COM)

# **Anti-Thioredoxin Reductase 1 Recombinant Rabbit Monoclonal Antibody**

PAGE 4

FeQ™ ECL Substrate Kit (Cat#226).

---

## **SUPPORT**

SUPPORT@GENUINBIOTECH.COM  
TEL: +1-540-855-7041

## **ORDERS**

SALES@GENUINBIOTECH.COM  
FAX: +1-540-855-7041

**[WWW.GENUINBIOTECH.COM](http://WWW.GENUINBIOTECH.COM)**