

Anti-Pyruvate Dehydrogenase E1 Subunit Beta Recombinant Rabbit Monoclonal Antibody



Catalog #: 3351

Aliases

PDHB; Pyruvate Dehydrogenase E1 Subunit Beta; PDHE1B; E1beta; Pyruvate Dehydrogenase E1 Component Subunit Beta, Mitochondrial; Pyruvate Dehydrogenase (Lipoamide) Beta; EC 1.2.4.1; PDHE1-B; PHE1B; Pyruvate Dehydrogenase, E1 Beta Polypeptide; Epididymis Secretory Sperm Binding Protein; Pyruvate Dehydrogenase E1 Beta Subunit; PDHBD

Background

Gene Name: PDHB

NCBI Gene Entry: [5162](#)

UniProt Entry: [P11177](#)

Application Information

Molecular Weight: Predicted, 39 kDa; observed, 35 kDa

Clonality: Rabbit monoclonal antibody

Clone ID: 24GB5250

Species Reactivity: Human, mouse, rat

Applications Tested: Western blotting (WB), immunocytochemistry (IC), flow cytometry (FCM)

Immunogen

A synthesized peptide derived from human Pyruvate Dehydrogenase E1 beta subunit

Isotype

Rabbit IgG

Storage Buffer

Supplied in PBS (pH 7.4) containing 50% glycerol, and 0.02% sodium azide.

Storage

Store at -20 °C for one year.

Recommended Dilutions

Western Blotting (WB): 1:1,000-1:5,000

Immunocytochemistry (IC): 1:100-1:1,000

Flow Cytometry (FCM): 1:2,000

SUPPORT

SUPPORT@GENUINBIOTECH.COM
TEL: +1-540-855-7041

ORDERS

SALES@GENUINBIOTECH.COM
FAX: +1-540-855-7041

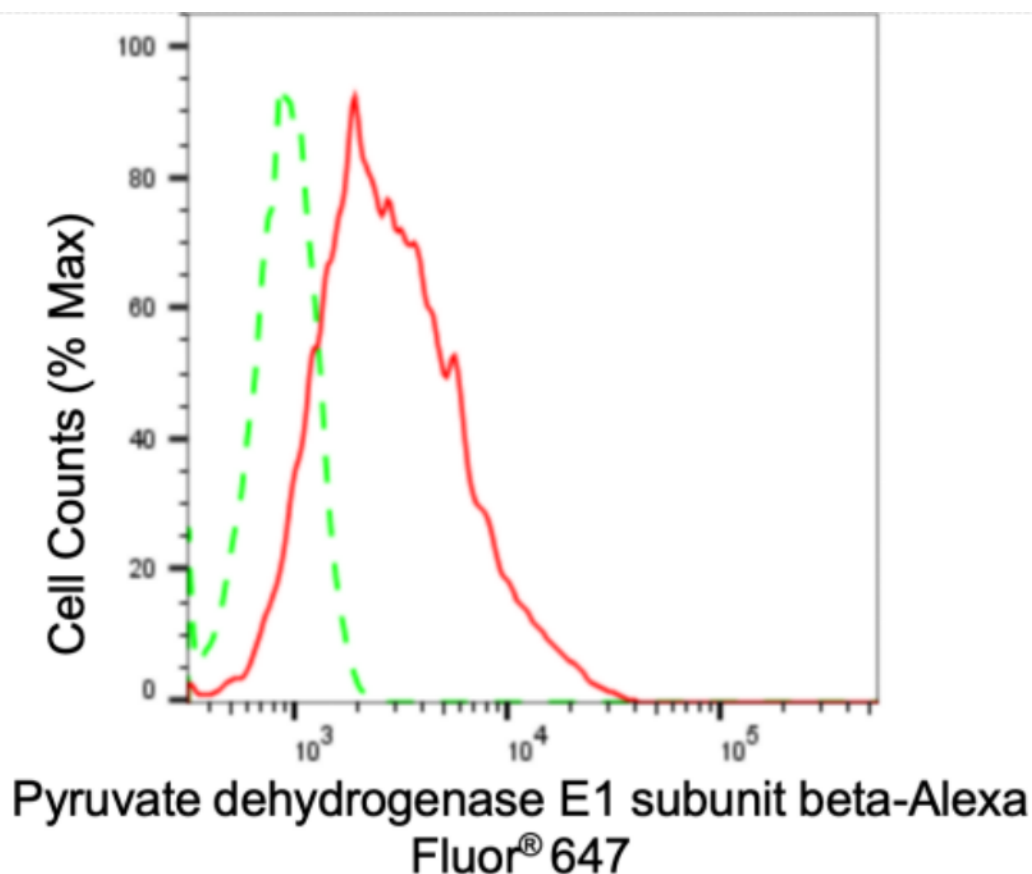
WWW.GENUINBIOTECH.COM

Anti-Pyruvate Dehydrogenase E1 Subunit Beta Recombinant Rabbit Monoclonal Antibody

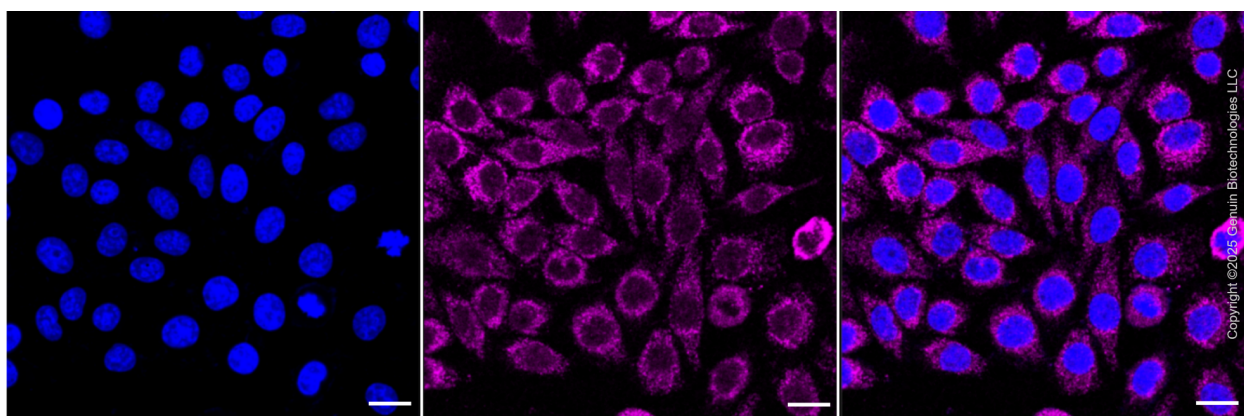
PAGE 2

Note: This product is for research use only.

Validation Data



Flow cytometric analysis of pyruvate dehydrogenase E1 subunit beta expression in HepG2 cells using anti-pyruvate dehydrogenase E1 subunit beta antibody (Cat#3351, 1:2,000). Green, isotype control; red, pyruvate dehydrogenase E1 subunit beta.



Immunocytochemical staining of HepG2 cells with anti-Pyruvate dehydrogenase E1 subunit beta antibody (Cat#3351, 1:1,000). Nuclei were stained blue with DAPI; Pyruvate dehydrogenase E1

SUPPORT

SUPPORT@GENUINBIOTECH.COM
TEL: +1-540-855-7041

ORDERS

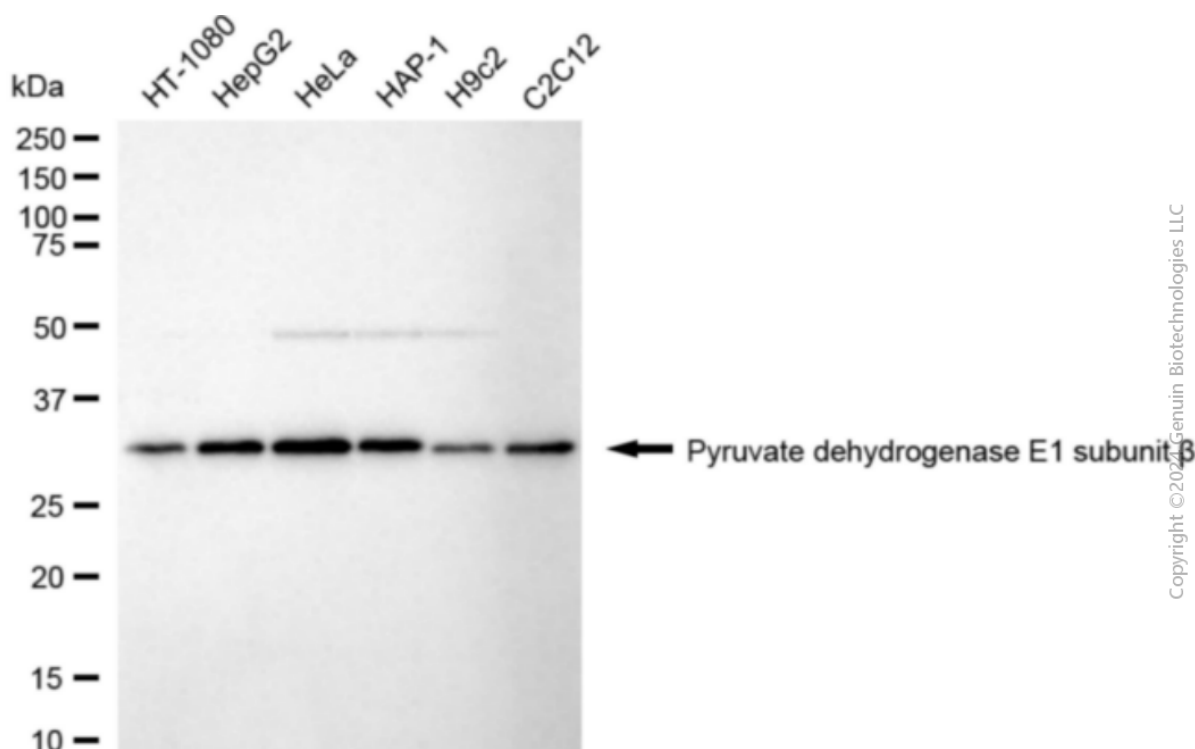
SALES@GENUINBIOTECH.COM
FAX: +1-540-855-7041

WWW.GENUINBIOTECH.COM

Anti-Pyruvate Dehydrogenase E1 Subunit Beta Recombinant Rabbit Monoclonal Antibody

PAGE 3

subunit beta was stained magenta with Alexa Fluor® 647. Images were taken using Leica stellaris 5. Protein abundance based on laser Intensity and smart gain: Medium. Scale bar: 20 μ m.



Western blotting analysis using anti-pyruvate dehydrogenase E1 subunit beta antibody (Cat#3351). Total cell lysates (30 μ g) from various cell lines were loaded and separated by SDS-PAGE. The blot was incubated with anti-pyruvate dehydrogenase E1 subunit beta antibody (Cat#3351, 1:5,000) and HRP-conjugated goat anti-rabbit secondary antibody (Cat#201, 1:20,000) respectively. Image was developed using NaQ™ ECL Substrate Kit (Cat#716).

SUPPORT

SUPPORT@GENUINBIOTECH.COM
TEL: +1-540-855-7041

ORDERS

SALES@GENUINBIOTECH.COM
FAX: +1-540-855-7041

WWW.GENUINBIOTECH.COM