

# Anti-SX2IP Recombinant Rabbit Monoclonal Antibody



**Catalog #: 3352**

## Aliases

SSX2IP; SSX Family Member 2 Interacting Protein; HMsd1; Synovial Sarcoma, X Breakpoint 2 Interacting Protein; Afadin- And Alpha-Actinin-Binding Protein; Afadin DIL Domain-Interacting Protein; SSX2-Interacting Protein; ADIP; KIAA0923

## Background

Gene Name: SSX2IP

NCBI Gene Entry: [117178](#)

UniProt Entry: [Q9Y2D8](#)

## Application Information

Molecular Weight: Predicted, 71 kDa; observed, 74 kDa

Clonality: Rabbit monoclonal antibody

Clone ID: 24GB5255

Species Reactivity: Human, rat

Applications Tested: Western blotting (WB), flow cytometry (FCM), immunocytochemistry (IC)

## Immunogen

A synthesized peptide derived from human SSX2IP

## Isotype

Rabbit IgG

## Storage Buffer

Supplied in PBS (pH 7.4) containing 50% glycerol, and 0.02% sodium azide.

## Storage

Store at -20 °C for one year.

## Recommended Dilutions

Western Blotting (WB): 1:1,000-1:5,000

Flow Cytometry (FCM): 1:2,000

Immunocytochemistry (IC): 1:100-1:1,000

**Note:** This product is for research use only.

---

### SUPPORT

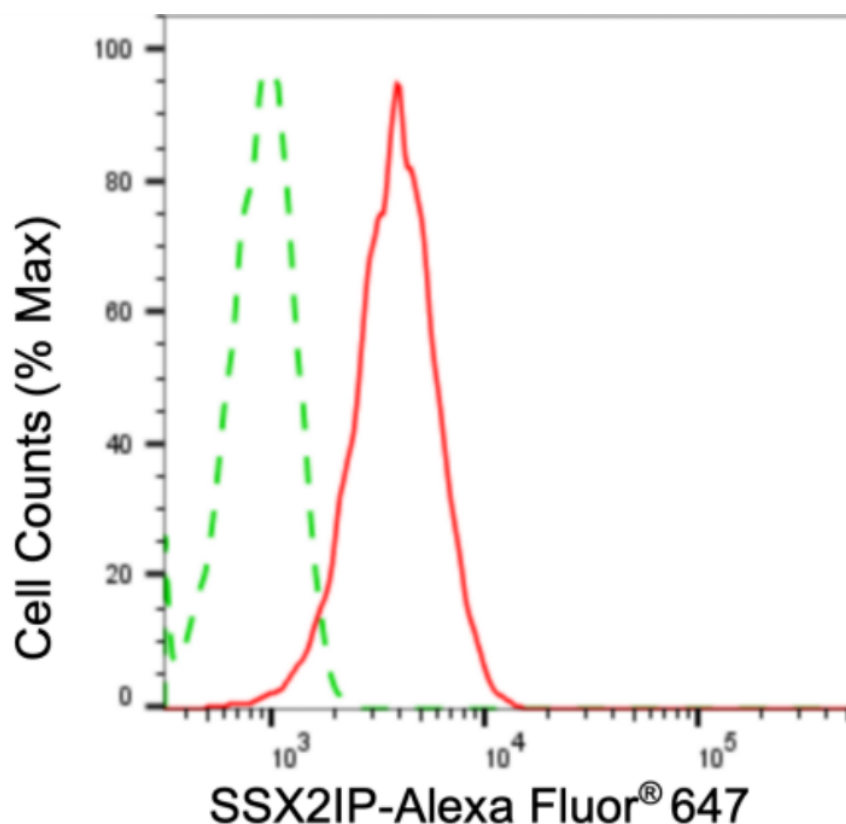
SUPPORT@GENUINBIOTECH.COM  
TEL: +1-540-855-7041

### ORDERS

SALES@GENUINBIOTECH.COM  
FAX: +1-540-855-7041

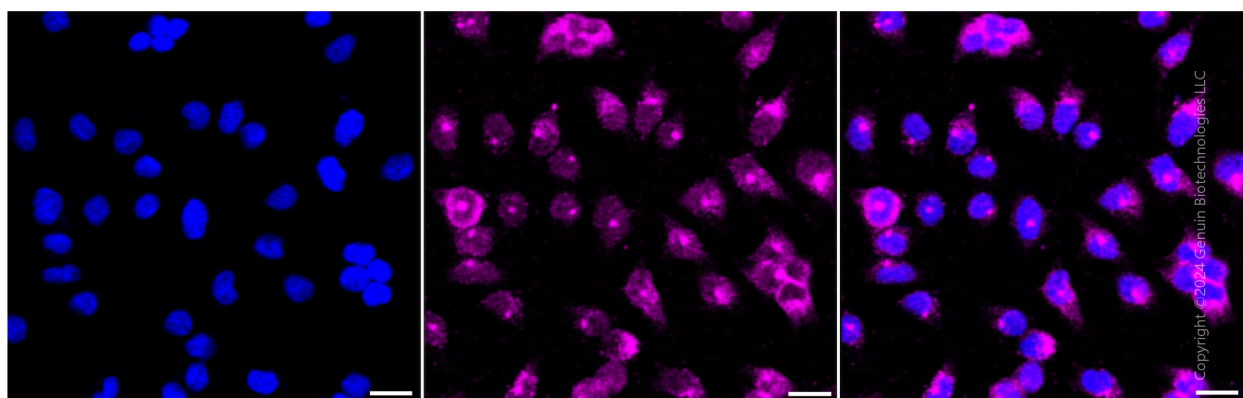
[WWW.GENUINBIOTECH.COM](http://WWW.GENUINBIOTECH.COM)

## Validation Data



Copyright ©2024 Genuin Biotechnologies LLC

Flow cytometric analysis of SSX2IP expression in HeLa cells using anti-SSX2IP antibody (Cat#3352, 1:2,000). Green, isotype control; red, SSX2IP.



Copyright ©2024 Genuin Biotechnologies LLC

Immunocytochemical staining of HeLa cells with anti-SSX2IP antibody (Cat#3352, 1:1,000). Nuclei were stained blue with DAPI; SSX2IP was stained magenta with Alexa Fluor® 647. Images were taken using Leica stellaris 5. Protein abundance based on laser Intensity and smart gain: Medium. Scale bar: 20  $\mu$ m.

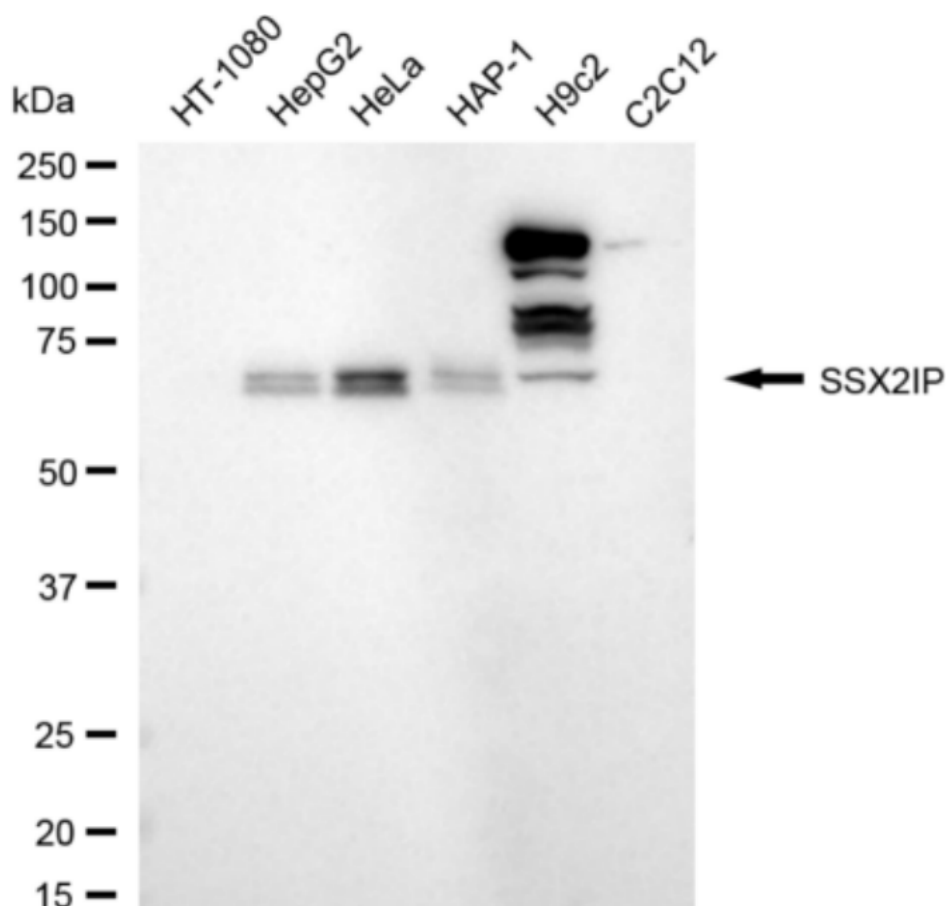
### SUPPORT

SUPPORT@GENUINBIOTECH.COM  
TEL: +1-540-855-7041

### ORDERS

SALES@GENUINBIOTECH.COM  
FAX: +1-540-855-7041

WWW.GENUINBIOTECH.COM



Copyright ©2024 Genuin Biotechnologies LLC

Western blotting analysis using anti-SSX2IP antibody (Cat#3352). Total cell lysates (30  $\mu$ g) from various cell lines were loaded and separated by SDS-PAGE. The blot was incubated with anti-SSX2IP antibody (Cat#3352, 1:5,000) and HRP-conjugated goat anti-rabbit secondary antibody (Cat#201, 1:20,000) respectively. Image was developed using NaQ™ ECL Substrate Kit (Cat#716).