

Anti-Prosaposin Recombinant Rabbit Monoclonal Antibody



Catalog #: 3354

Aliases

PSAP; Prosaposin; GLBA; SAP1; Sphingolipid Activator Protein-1; Sphingolipid Activator Protein-2; Proactivator Polypeptide; Precursor Of Saposins; Saposin-A; Saposin-B; Saposin-C; Saposin-D; SAP2; Variant Gaucher Disease And Variant Metachromatic Leukodystrophy; PARK24; PSAPD

Background

Gene Name: PSAP

NCBI Gene Entry: [5660](#)

UniProt Entry: [P07602](#)

Application Information

Molecular Weight: Predicted, 58 kDa; observed, 74 kDa

Clonality: Rabbit monoclonal antibody

Clone ID: 24GB5265

Species Reactivity: Human

Applications Tested: Western blotting (WB), flow cytometry (FCM), immunocytochemistry (IC)

Immunogen

A synthesized peptide derived from human PSAP

Isotype

Rabbit IgG

Storage Buffer

Supplied in PBS (pH 7.4) containing 50% glycerol, and 0.02% sodium azide.

Storage

Store at -20 °C for one year.

Recommended Dilutions

Western Blotting (WB): 1:1,000-1:5,000

Flow Cytometry (FCM): 1:2,000

Immunocytochemistry (IC): 1:100-1:1,000

SUPPORT

SUPPORT@GENUINBIOTECH.COM
TEL: +1-540-855-7041

ORDERS

SALES@GENUINBIOTECH.COM
FAX: +1-540-855-7041

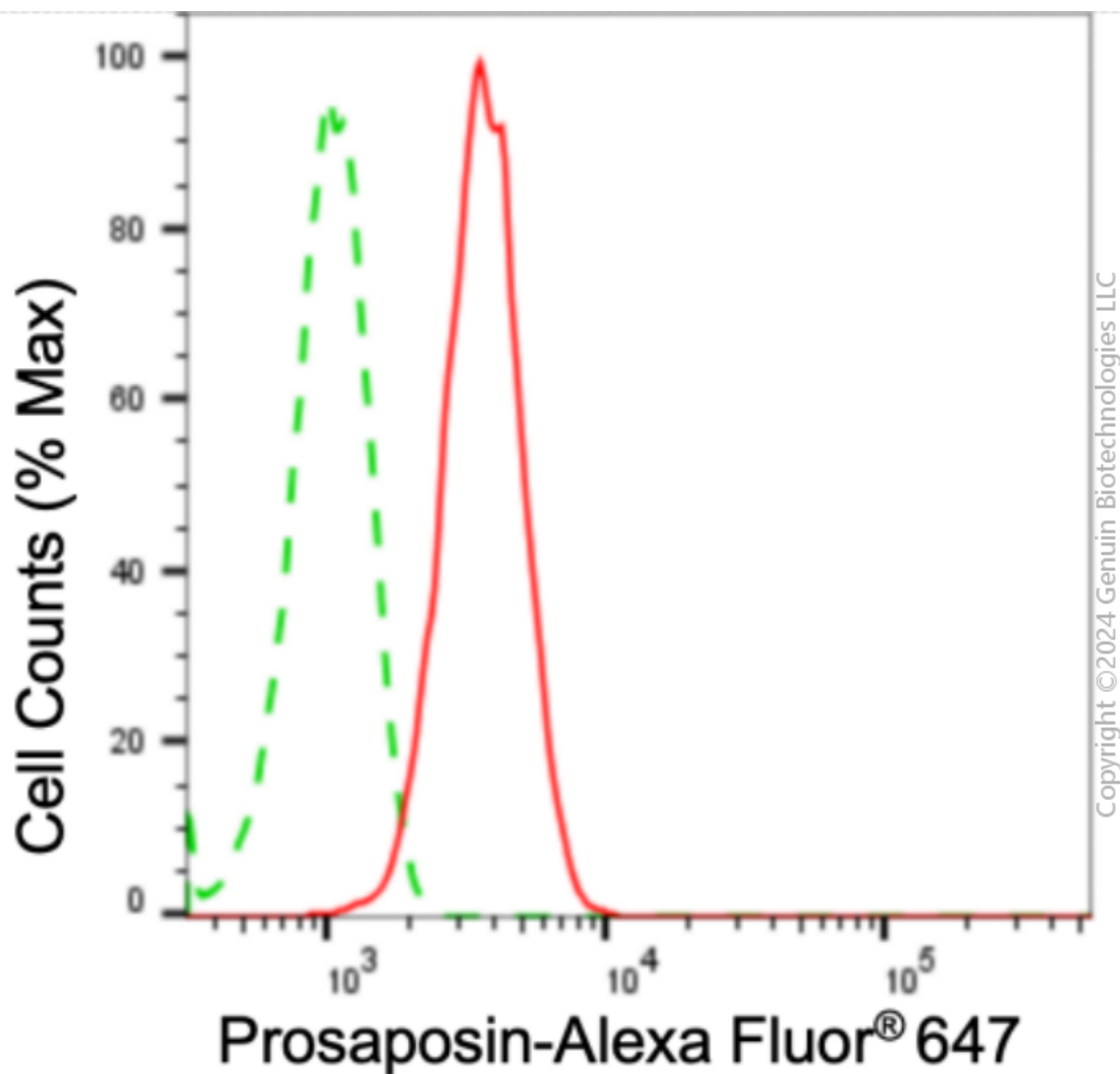
WWW.GENUINBIOTECH.COM

Anti-Prosaposin Recombinant Rabbit Monoclonal Antibody

PAGE 2

Note: This product is for research use only.

Validation Data



Flow cytometric analysis of prosaposin expression in HepG2 cells using anti-prosaposin antibody (Cat#3354, 1:2,000). Green, isotype control; red, prosaposin.

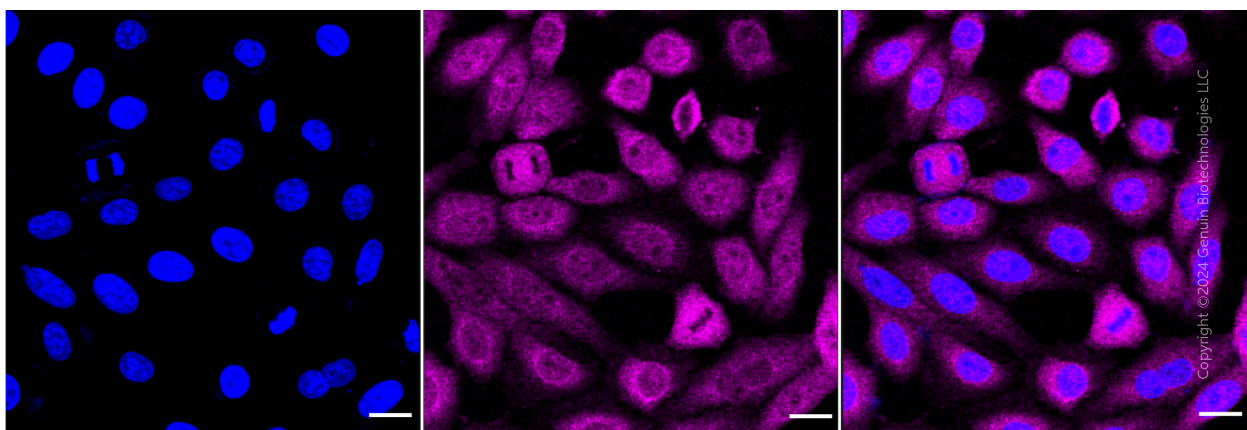
SUPPORT

SUPPORT@GENUINBIOTECH.COM
TEL: +1-540-855-7041

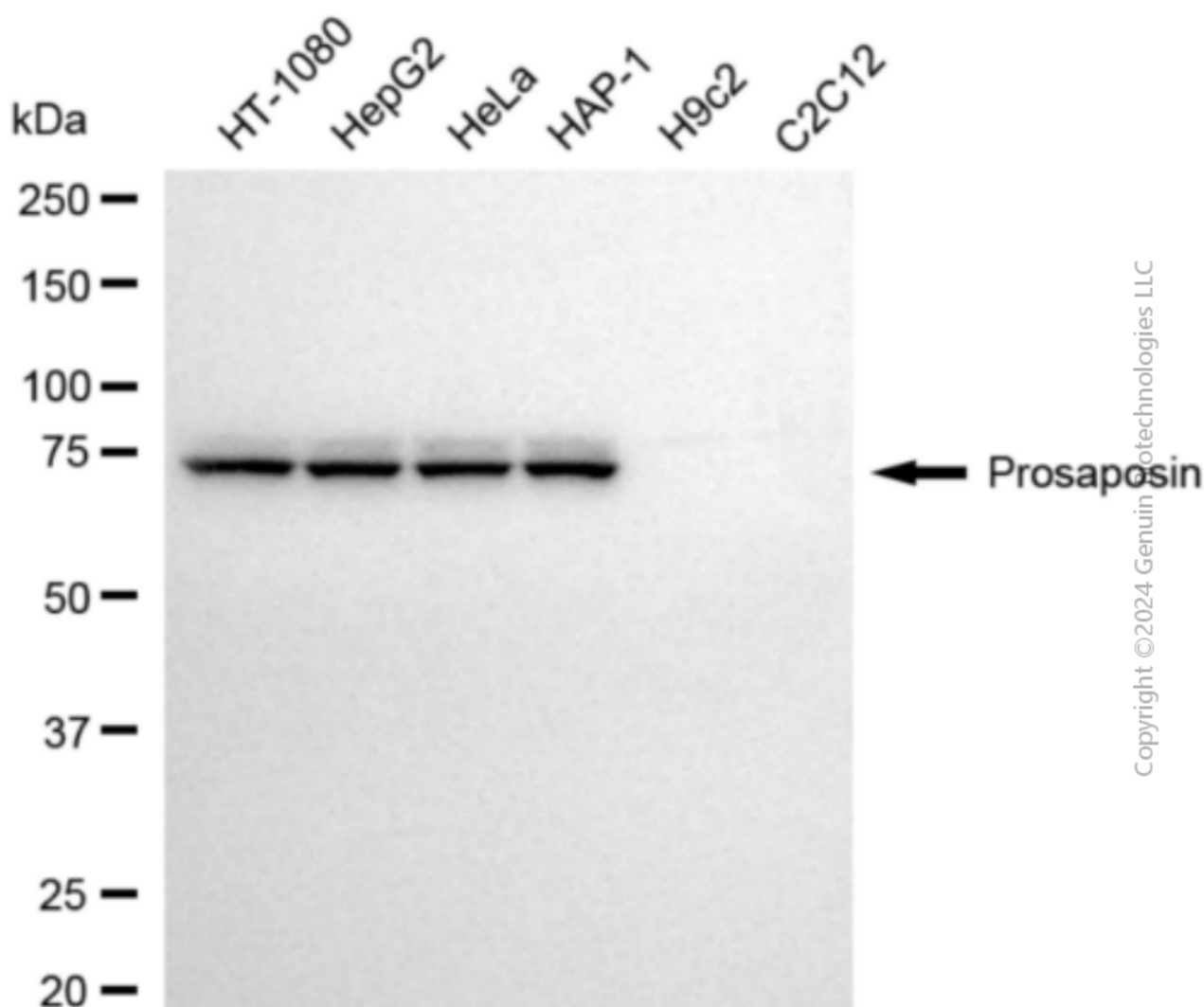
ORDERS

SALES@GENUINBIOTECH.COM
FAX: +1-540-855-7041

WWW.GENUINBIOTECH.COM



Immunocytochemical staining of HepG2 cells with anti-prosaposin antibody (Cat#3354, 1:1,000). Nuclei were stained blue with DAPI; Prosaposin was stained magenta with Alexa Fluor® 647. Images were taken using Leica stellaris 5. Protein abundance based on laser Intensity and smart gain: Medium. Scale bar: 20 μ m.



Anti-Prosaposin Recombinant Rabbit Monoclonal Antibody

PAGE 4

Western blotting analysis using anti-prosaposin antibody (Cat#3354). Total cell lysates (30 µg) from various cell lines were loaded and separated by SDS-PAGE. The blot was incubated with anti-prosaposin antibody (Cat#3354, 1:5,000) and HRP-conjugated goat anti-rabbit secondary antibody (Cat#201, 1:20,000) respectively. Image was developed using NaQ™ ECL Substrate Kit (Cat#716).

SUPPORT

SUPPORT@GENUINBIOTECH.COM
TEL: +1-540-855-7041

ORDERS

SALES@GENUINBIOTECH.COM
FAX: +1-540-855-7041

WWW.GENUINBIOTECH.COM