

# Anti-ATP2B1 Recombinant Rabbit Monoclonal Antibody



**Catalog #: 3355**

## Aliases

ATP2B1; ATPase Plasma Membrane Ca<sup>2+</sup> Transporting 1; PMCA1; Plasma Membrane Calcium-Transporting ATPase 1; ATPase, Ca<sup>++</sup> Transporting, Plasma Membrane 1; Plasma Membrane Calcium ATPase Isoform 1; Plasma Membrane Calcium Pump Isoform 1; Plasma Membrane Calcium Pump; EC 7.2.2.10; EC 3.6.3.8; EC 3.6.3; PMCA1kb; MRD66

## Background

Gene Name: ATP2B1

NCBI Gene Entry: [490](#)

UniProt Entry: [P20020](#)

## Application Information

Molecular Weight: Predicted, 135 kDa; observed, 130-250 kDa

Clonality: Rabbit monoclonal antibody

Clone ID: 24GB5270

Species Reactivity: Human, mouse, rat

Applications Tested: Western blotting (WB), immunocytochemistry (IC), flow cytometry (FCM)

## Immunogen

A synthesized peptide derived from human PMCA1

## Isotype

Rabbit IgG

## Storage Buffer

Supplied in PBS (pH 7.4) containing 50% glycerol, and 0.02% sodium azide.

## Storage

Store at -20 °C for one year.

## Recommended Dilutions

Western Blotting (WB): 1:1,000-1:5,000

Immunocytochemistry (IC): 1:100-1:1,000

Flow Cytometry (FCM): 1:2,000

---

### SUPPORT

SUPPORT@GENUINBIOTECH.COM  
TEL: +1-540-855-7041

### ORDERS

SALES@GENUINBIOTECH.COM  
FAX: +1-540-855-7041

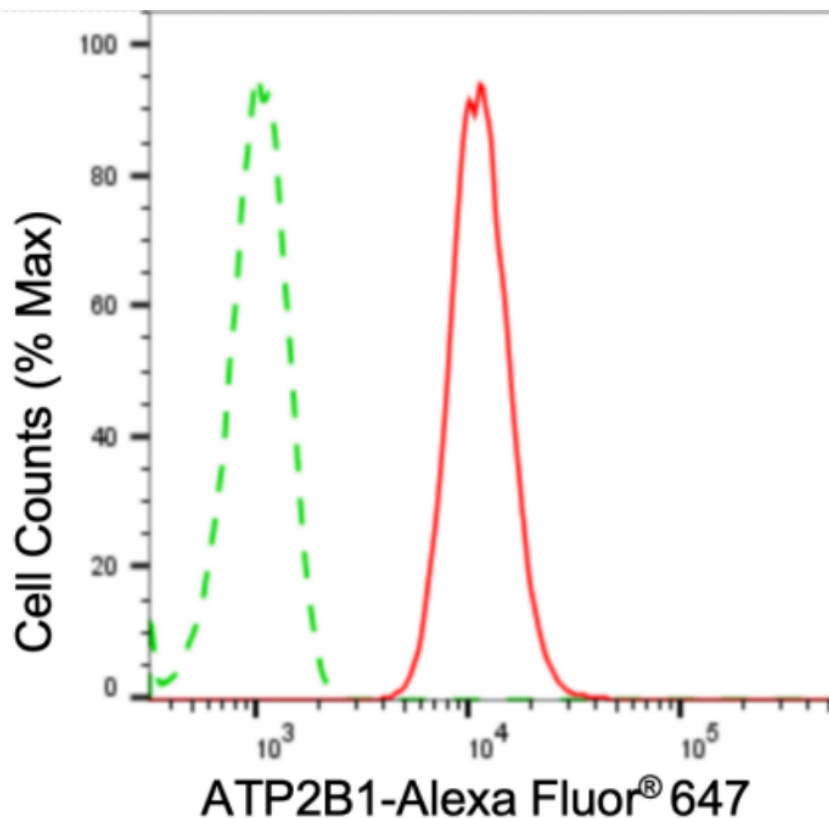
[WWW.GENUINBIOTECH.COM](http://WWW.GENUINBIOTECH.COM)

# Anti-ATP2B1 Recombinant Rabbit Monoclonal Antibody

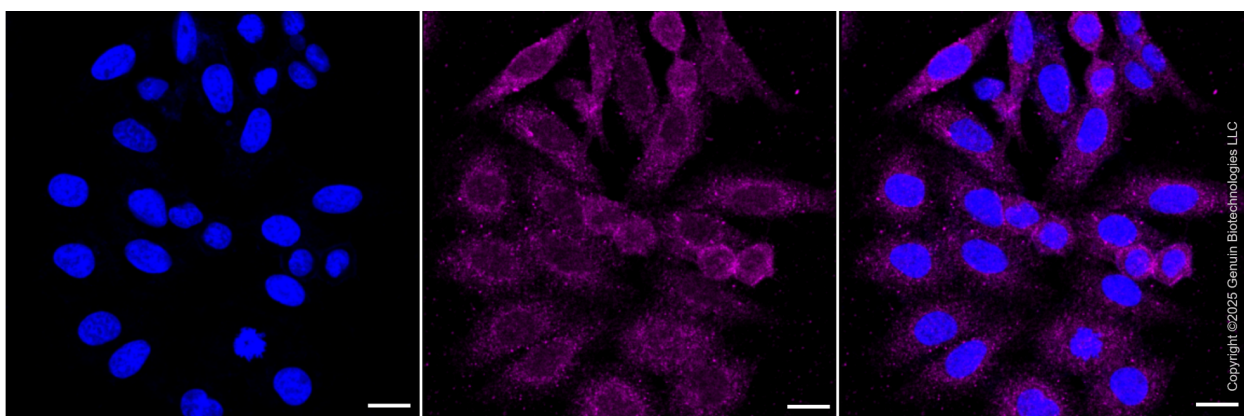
PAGE 2

**Note:** This product is for research use only.

## Validation Data



Flow cytometric analysis of ATP2B1 expression in HepG2 cells using anti-ATP2B1 antibody (Cat#3355, 1:2,000). Green, isotype control; red, ATP2B1.



Immunocytochemical staining of HepG2 cells with anti-ATP2B1 antibody (Cat#3355, 1:1,000). Nuclei were stained blue with DAPI; ATP2B1 was stained magenta with Alexa Fluor® 647. Images were taken using Leica stellaris 5. Protein abundance based on laser Intensity and smart gain: Medium. Scale bar: 20  $\mu$ m.

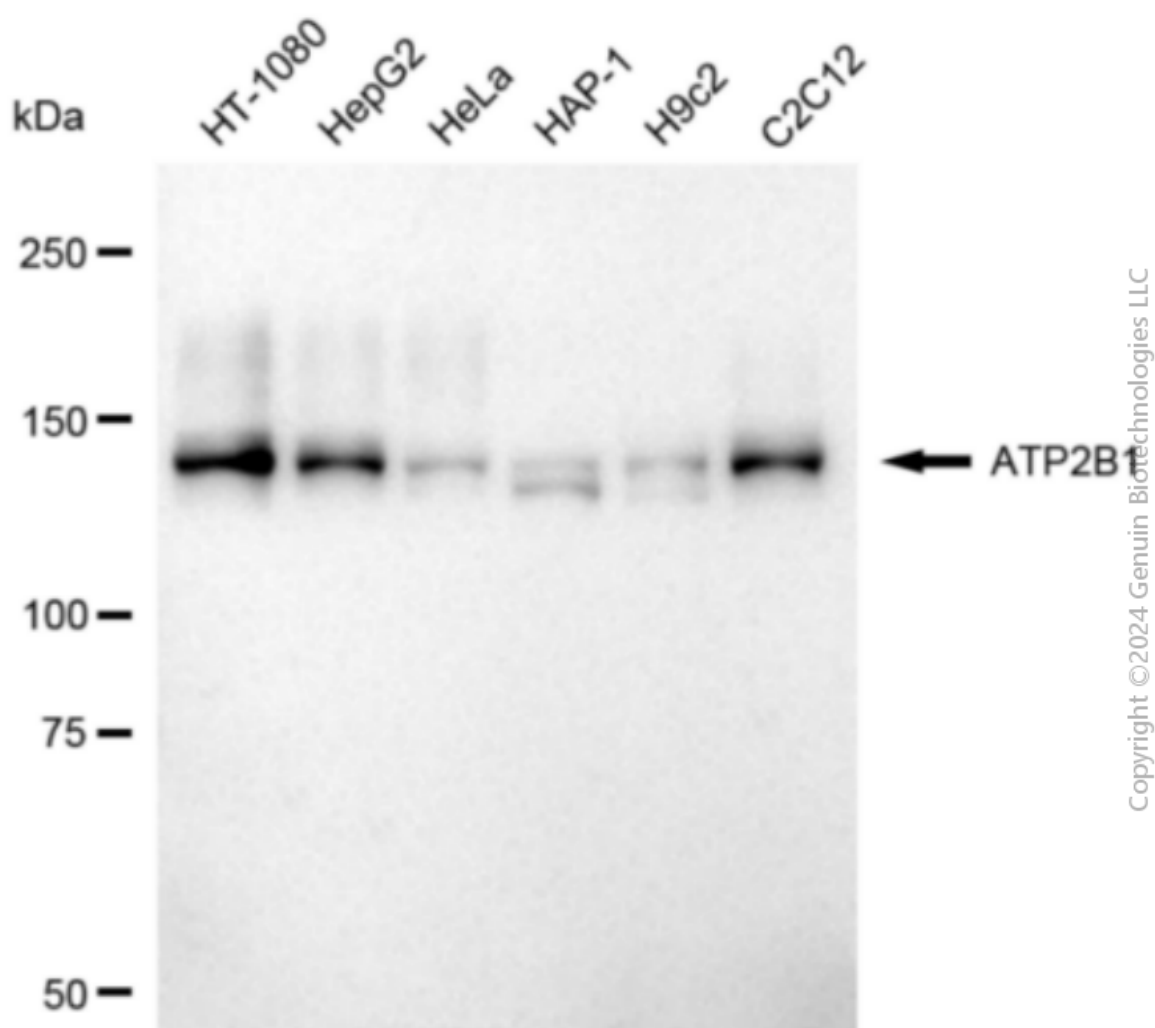
### SUPPORT

SUPPORT@GENUINBIOTECH.COM  
TEL: +1-540-855-7041

### ORDERS

SALES@GENUINBIOTECH.COM  
FAX: +1-540-855-7041

[WWW.GENUINBIOTECH.COM](http://WWW.GENUINBIOTECH.COM)



Western blotting analysis using anti-ATP2B1 antibody (Cat#3355). Total cell lysates (30 µg) from various cell lines were loaded and separated by SDS-PAGE. The blot was incubated with anti-ATP2B1 antibody (Cat#3355, 1:5,000) and HRP-conjugated goat anti-rabbit secondary antibody (Cat#201, 1:20,000) respectively. Image was developed using NaQ™ ECL Substrate Kit (Cat#716).