

Anti-DLG1 Recombinant Rabbit Monoclonal Antibody



Catalog #: 3362

Aliases

DLG1; Discs Large MAGUK Scaffold Protein 1; SAP-97; SAP97; Synapse-Associated Protein 97; DJ1061C18.1.1; DLGH1; Hdlg; Discs Large Homolog 1, Scribble Cell Polarity Complex Component; Presynaptic Protein SAP97; Disks Large Homolog 1; Discs, Large Homolog 1 (Drosophila); Discs Large Homolog 1; HDlg

Background

Gene Name: DLG1

NCBI Gene Entry: [1739](#)

UniProt Entry: [Q12959](#)

Application Information

Molecular Weight: Predicted, 100 kDa; observed, 130 kDa

Clonality: Rabbit monoclonal antibody

Clone ID: 24GB5305

Species Reactivity: Human, mouse, rat

Applications Tested: Western blotting (WB), flow cytometry (FCM), immunocytochemistry (IC)

Immunogen

A synthesized peptide derived from human SAP97

Isotype

Rabbit IgG

Storage Buffer

Supplied in PBS (pH 7.4) containing 50% glycerol, and 0.02% sodium azide.

Storage

Store at -20 °C for one year.

Recommended Dilutions

Western Blotting (WB): 1:1,000-1:5,000

Flow Cytometry (FCM): 1:2,000

Immunocytochemistry (IC): 1:100-1:1,000

SUPPORT

SUPPORT@GENUINBIOTECH.COM
TEL: +1-540-855-7041

ORDERS

SALES@GENUINBIOTECH.COM
FAX: +1-540-855-7041

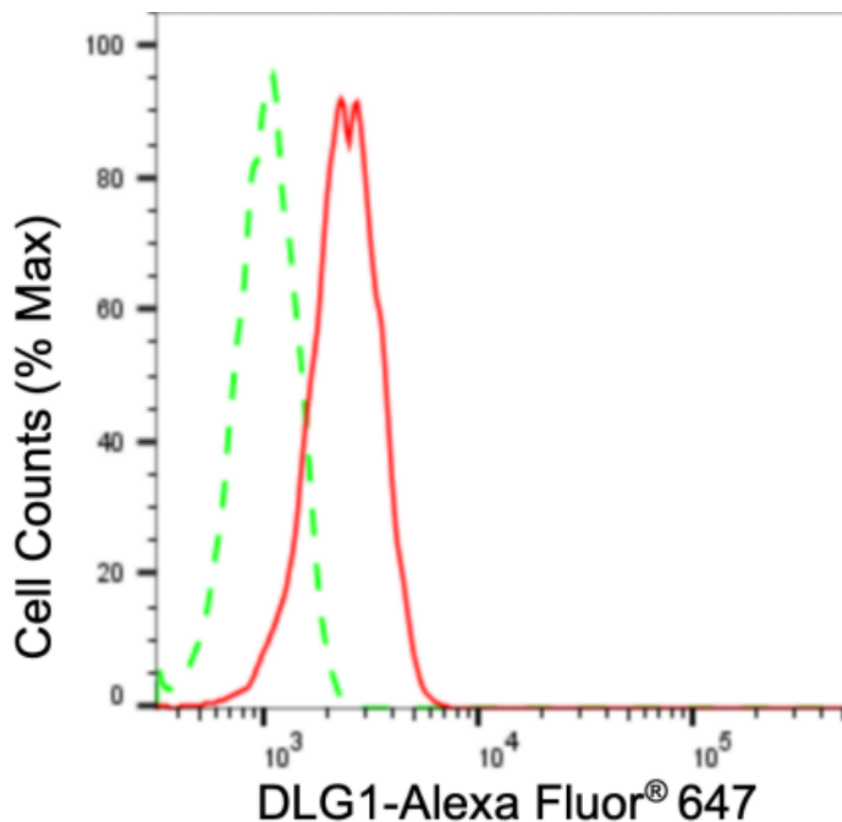
WWW.GENUINBIOTECH.COM

Anti-DLG1 Recombinant Rabbit Monoclonal Antibody

PAGE 2

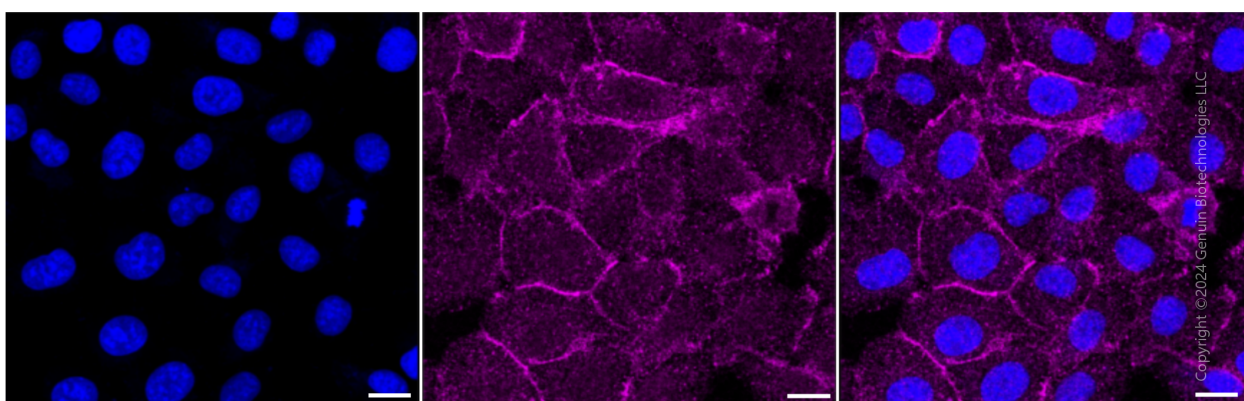
Note: This product is for research use only.

Validation Data



Copyright ©2024 Genuin Biotechnologies LLC

Flow cytometric analysis of DLG1 expression in HT-1080 cells using anti-DLG1 antibody (Cat#3362, 1:2,000). Green, isotype control; red, DLG1.



Copyright ©2024 Genuin Biotechnologies LLC

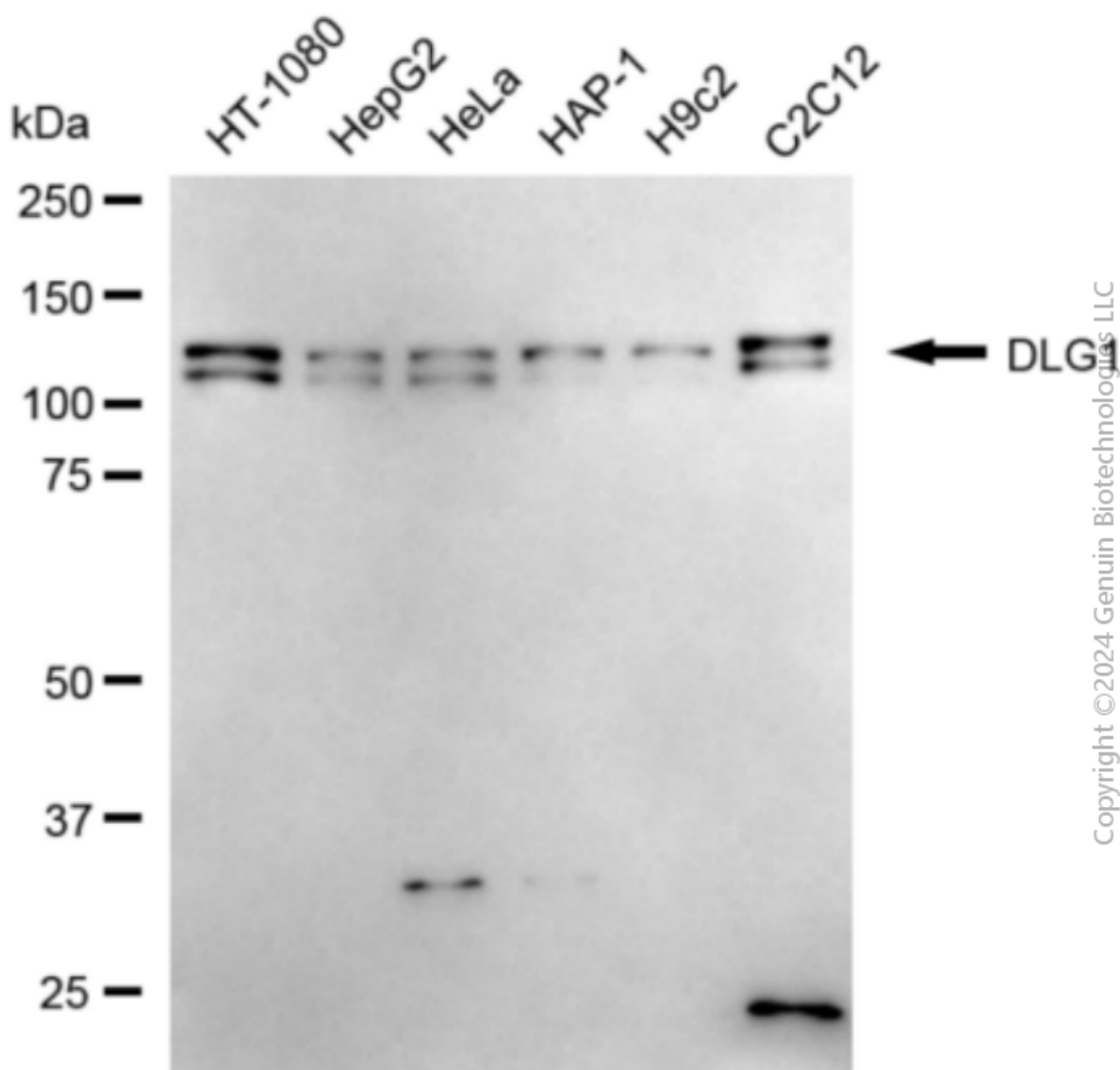
SUPPORT

SUPPORT@GENUINBIOTECH.COM
TEL: +1-540-855-7041

ORDERS

SALES@GENUINBIOTECH.COM
FAX: +1-540-855-7041

WWW.GENUINBIOTECH.COM



Western blotting analysis using anti-DLG1 antibody (Cat#3362). Total cell lysates (30 µg) from various cell lines were loaded and separated by SDS-PAGE. The blot was incubated with anti-DLG1 antibody (Cat#3362, 1:5,000) and HRP-conjugated goat anti-rabbit secondary antibody (Cat#201, 1:20,000) respectively. Image was developed using NaQ™ ECL Substrate Kit (Cat#716).