

# Anti-Polybromo 1 Recombinant Rabbit Monoclonal Antibody



**Catalog #: 3364**

## Aliases

PBRM1; Polybromo 1; BAF180; PB1; SMARCH1; BRG1-Associated Factor 180; Protein Polybromo-1; Polybromo-1D; HPB1; RCC

## Background

Gene Name: PBRM1

NCBI Gene Entry: [55193](#)

UniProt Entry: [Q86U86](#)

## Application Information

Molecular Weight: Predicted, 193 kDa; observed, 193 kDa

Clonality: Rabbit monoclonal antibody

Clone ID: 24GB5315

Species Reactivity: Human, mouse

Applications Tested: Western blotting (WB), flow cytometry (FCM), immunocytochemistry (IC)

## Immunogen

A synthesized peptide derived from human PBRM1

## Isotype

Rabbit IgG

## Storage Buffer

Supplied in PBS (pH 7.4) containing 50% glycerol, and 0.02% sodium azide.

## Storage

Store at -20 °C for one year.

## Recommended Dilutions

Western Blotting (WB): 1:1,000-1:5,000

Flow Cytometry (FCM): 1:2,000

Immunocytochemistry (IC): 1:100-1:1,000

**Note:** This product is for research use only.

## Validation Data

---

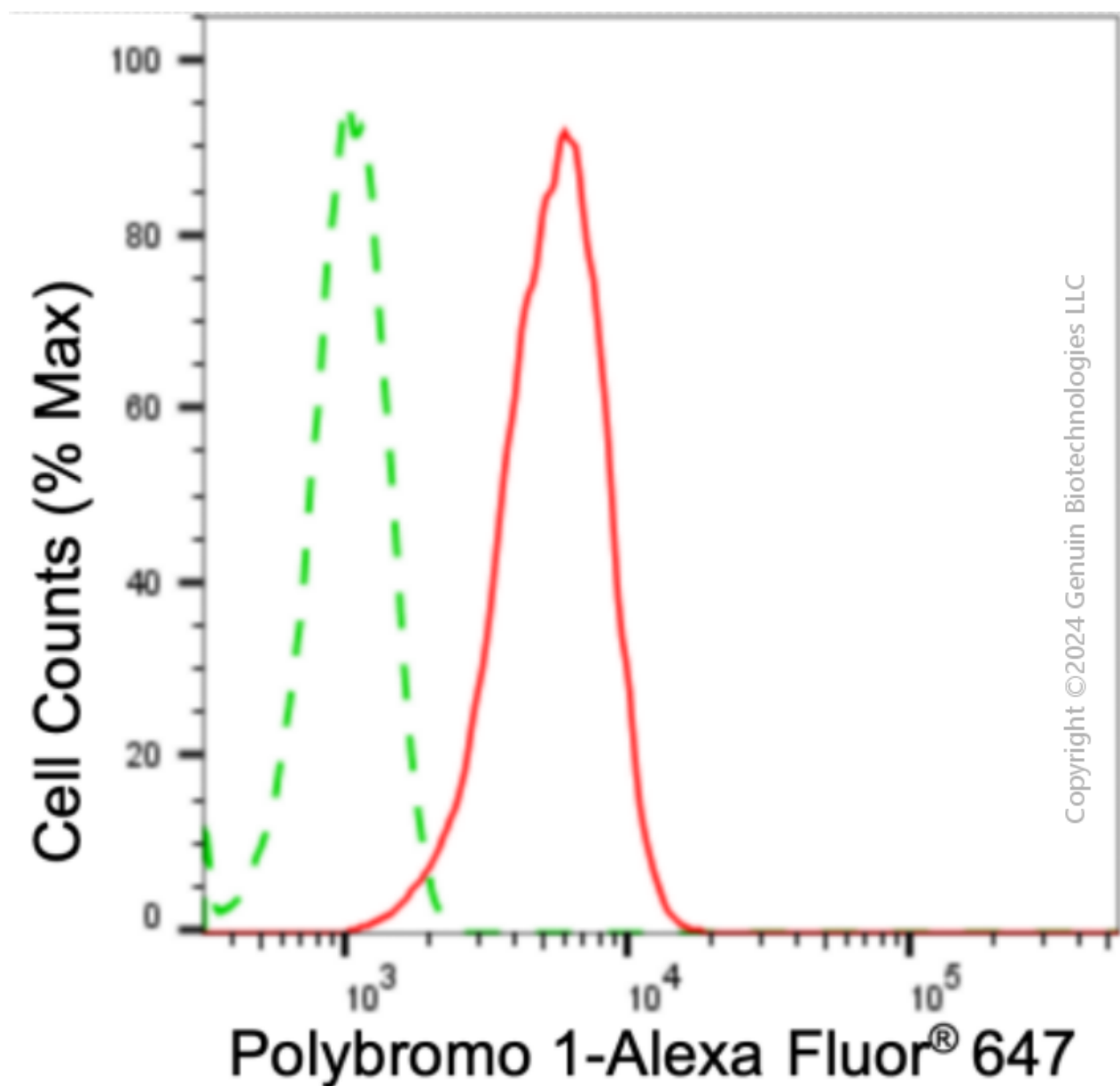
### SUPPORT

SUPPORT@GENUINBIOTECH.COM  
TEL: +1-540-855-7041

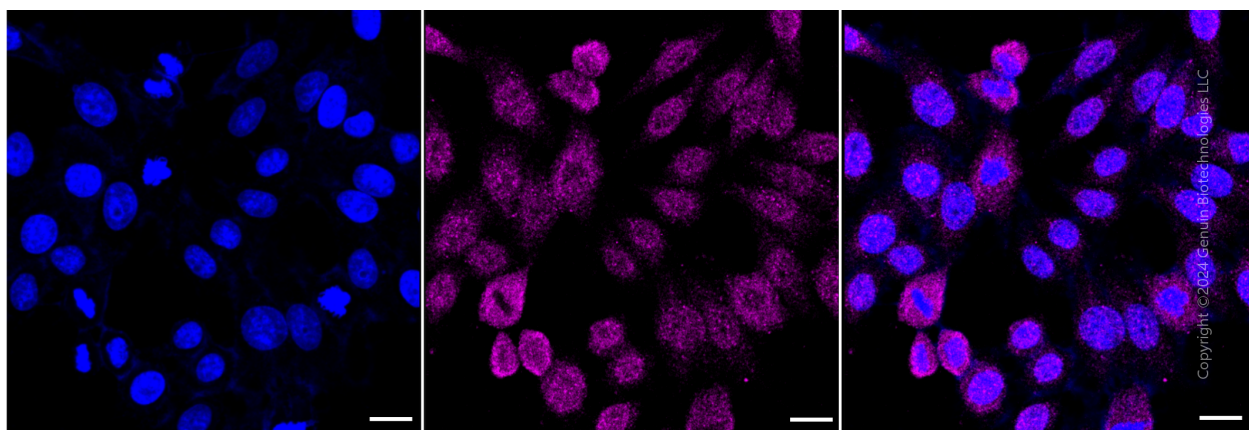
### ORDERS

SALES@GENUINBIOTECH.COM  
FAX: +1-540-855-7041

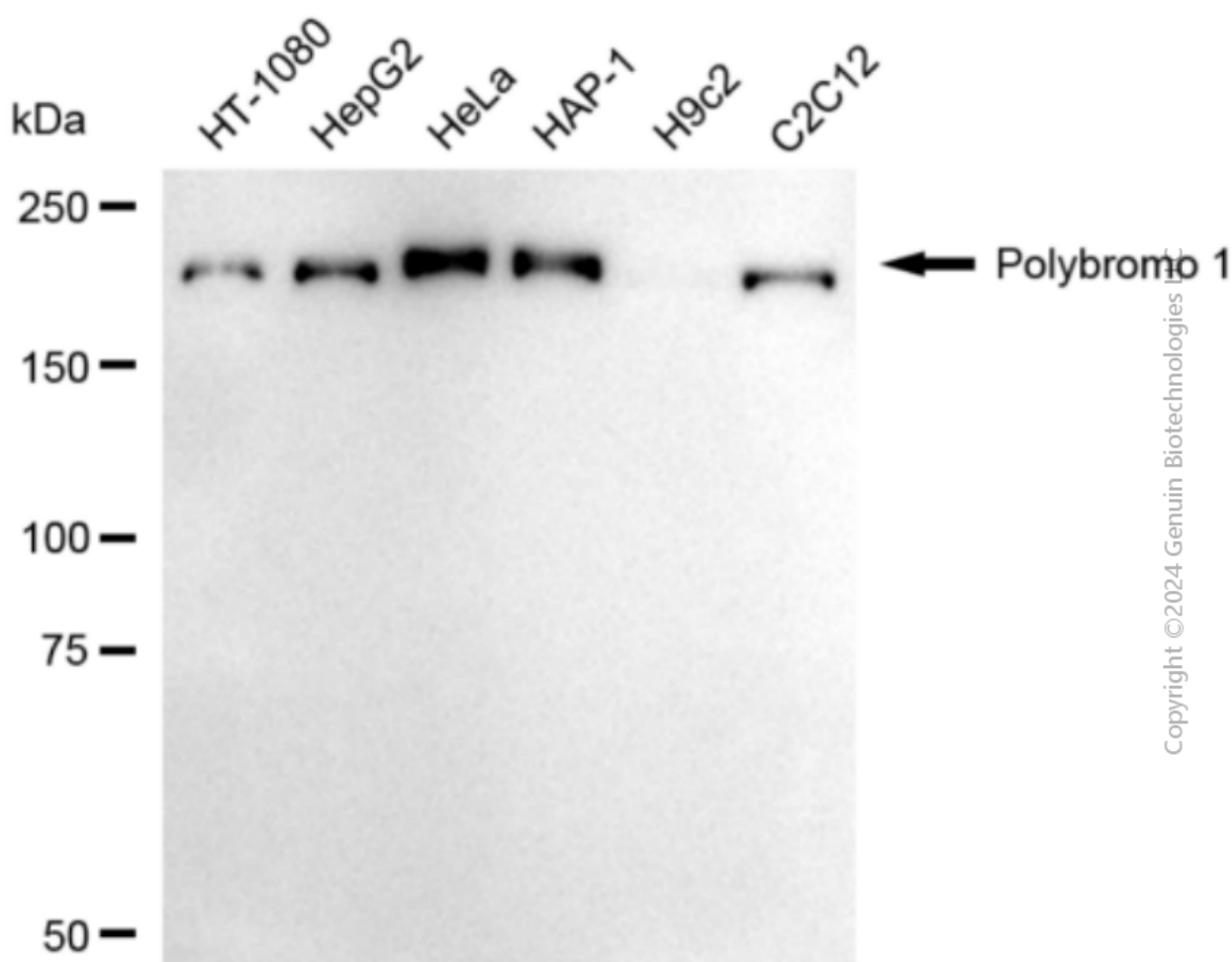
[WWW.GENUINBIOTECH.COM](http://WWW.GENUINBIOTECH.COM)



Flow cytometric analysis of polybromo 1 expression in HepG2 cells using anti-polybromo 1 antibody (Cat#3364, 1:2,000). Green, isotype control; red, polybromo 1.



Immunocytochemical staining of HepG2 cells with anti-polybromo 1 antibody (Cat#3364, 1:1,000). Nuclei were stained blue with DAPI; Polybromo 1 was stained magenta with Alexa Fluor® 647. Images were taken using Leica stellaris 5. Protein abundance based on laser Intensity and smart gain: Low. Scale bar: 20  $\mu$ m.



Western blotting analysis using anti-polybromo 1 antibody (Cat#3364). Total cell lysates (30  $\mu$ g) from various cell lines were loaded and separated by SDS-PAGE. The blot was incubated with

## SUPPORT

SUPPORT@GENUINBIOTECH.COM  
TEL: +1-540-855-7041

## ORDERS

SALES@GENUINBIOTECH.COM  
FAX: +1-540-855-7041

[WWW.GENUINBIOTECH.COM](http://WWW.GENUINBIOTECH.COM)

## **Anti-Polybromo 1 Recombinant Rabbit Monoclonal Antibody**

PAGE 4

anti-polybromo 1 antibody (Cat#3364, 1:5,000) and HRP-conjugated goat anti-rabbit secondary antibody (Cat#201, 1:20,000) respectively. Image was developed using NaQ™ ECL Substrate Kit (Cat#716).

---

### **SUPPORT**

SUPPORT@GENUINBIOTECH.COM  
TEL: +1-540-855-7041

### **ORDERS**

SALES@GENUINBIOTECH.COM  
FAX: +1-540-855-7041

**WWW.GENUINBIOTECH.COM**