

Anti-Fragile X Messenger Ribonucleoprotein 1 Rabbit Monoclonal Antibody



Catalog #: 3365

Aliases

FMR1; Fragile X Messenger Ribonucleoprotein 1; FMRP; FRAXA; FMRP Translational Regulator 1; MGC87458; POF1; POF; Fragile X Messenger Ribonucleoprotein; Synaptic Functional Regulator FMR1; Fragile X Mental Retardation 1; Premature Ovarian Failure 1; Protein FMR-1

Background

Gene Name: FMR1

NCBI Gene Entry: [2332](#)

UniProt Entry: [Q06787](#)

Application Information

Molecular Weight: Predicted, 71 kDa; observed, 70-80 kDa

Clonality: Rabbit monoclonal antibody

Clone ID: 24GB5325

Species Reactivity: Human, mouse, rat

Applications Tested: Western blotting (WB), flow cytometry (FCM), immunocytochemistry (IC)

Immunogen

A synthesized peptide derived from human FMRP

Isotype

Rabbit IgG

Storage Buffer

Supplied in PBS (pH 7.4) containing 50% glycerol, and 0.02% sodium azide.

Storage

Store at -20 °C for one year.

Recommended Dilutions

Western Blotting (WB): 1:1,000-1:5,000

Flow Cytometry (FCM): 1:2,000

Immunocytochemistry (IC): 1:100-1:1,000

SUPPORT

SUPPORT@GENUINBIOTECH.COM
TEL: +1-540-855-7041

ORDERS

SALES@GENUINBIOTECH.COM
FAX: +1-540-855-7041

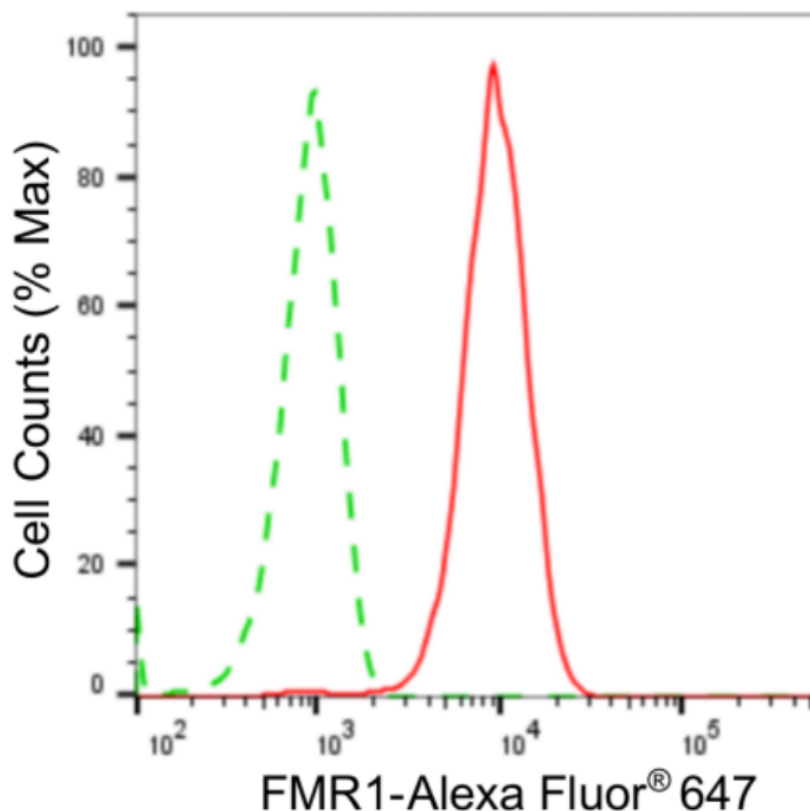
WWW.GENUINBIOTECH.COM

Anti-Fragile X Messenger Ribonucleoprotein 1 Rabbit Monoclonal Antibody

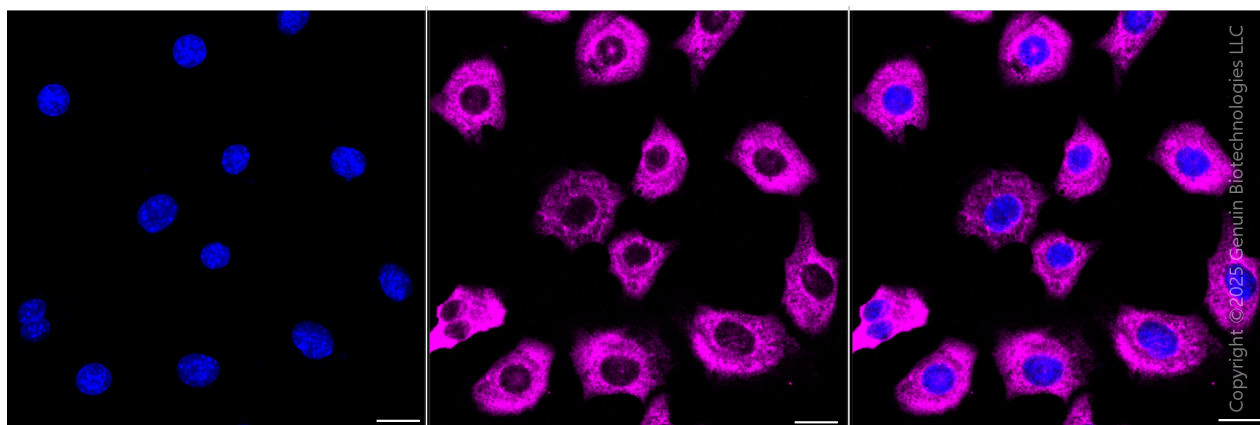
PAGE 2

Note: This product is for research use only.

Validation Data



Flow cytometric analysis of FMR1 expression in C2C12 cells using anti-FMR1 antibody (Cat#3365, 1:2,000). Green, isotype control; red, FMR1.



Immunocytochemical staining of C2C12 cells with anti-FMR1 antibody (Cat#3365, 1:1,000). Nuclei were stained blue with DAPI; FMR1 was stained magenta with Alexa Fluor® 647. Images were taken using Leica stellaris 5. Protein abundance based on laser Intensity and Smart Gain: Medium. Scale bar, 20 μ m.

SUPPORT

SUPPORT@GENUINBIOTECH.COM
TEL: +1-540-855-7041

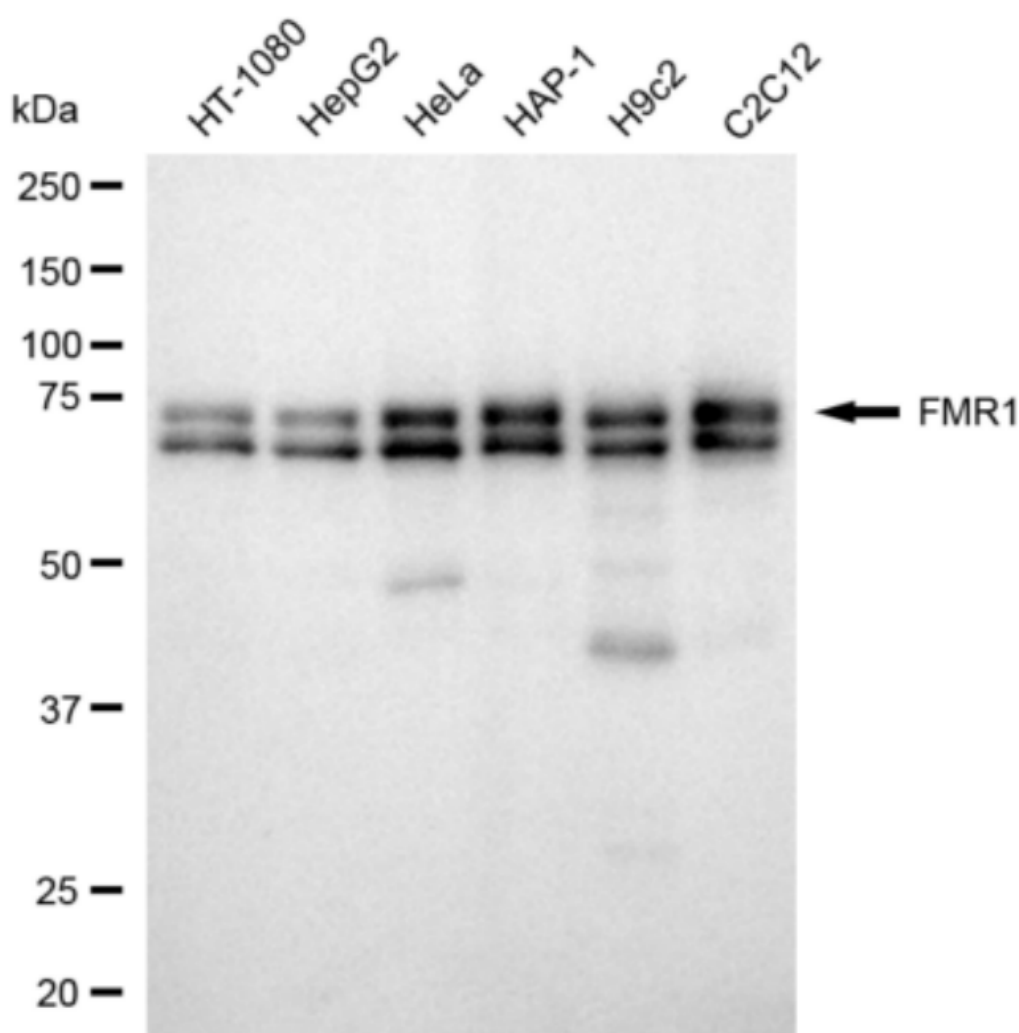
ORDERS

SALES@GENUINBIOTECH.COM
FAX: +1-540-855-7041

WWW.GENUINBIOTECH.COM

Anti-Fragile X Messenger Ribonucleoprotein 1 Rabbit Monoclonal Antibody

PAGE 3



Copyright ©2024 Genuin Biotechnologies LLC

Western blotting analysis using anti-FMR1 antibody (Cat#3365). Total cell lysates (20 µg) from various cell lines were loaded and separated by SDS-PAGE. The blot was incubated with anti-FMR1 antibody (Cat#3365, 1:5,000) and HRP-conjugated goat anti-rabbit secondary antibody (Cat#201, 1:20,000) respectively. Image was developed using FeQ™ ECL Substrate Kit (Cat#226). FMR1, fragile X messenger ribonucleoprotein 1.

SUPPORT

SUPPORT@GENUINBIOTECH.COM
TEL: +1-540-855-7041

ORDERS

SALES@GENUINBIOTECH.COM
FAX: +1-540-855-7041

WWW.GENUINBIOTECH.COM