

Anti-EWS RNA Binding Protein 1 Rabbit Monoclonal Antibody



Catalog #: 3377

Aliases

EWSR1; EWS RNA Binding Protein 1; EWS; Ewing Sarcoma Breakpoint Region 1; RNA-Binding Protein EWS; Ewings Sarcoma EWS-Flt1 (Type 1) Oncogene; Ewing Sarcoma Breakpoint Region 1 Protein; EWS Oncogene; BK984G1.4; EWS-FLI1

Background

Gene Name: EWSR1

NCBI Gene Entry: [2130](#)

UniProt Entry: [Q01844](#)

Application Information

Molecular Weight: Predicted, 68 kDa; observed, 85 kDa

Clonality: Rabbit monoclonal antibody

Clone ID: 24GB5385

Species Reactivity: Human, mouse, rat

Applications Tested: Western blotting (WB), flow cytometry (FCM), immunocytochemistry (IC)

Immunogen

A synthesized peptide derived from human EWSR1

Isotype

Rabbit IgG

Storage Buffer

Supplied in PBS (pH 7.4) containing 50% glycerol, and 0.02% sodium azide.

Storage

Store at -20 °C for one year.

Recommended Dilutions

Western Blotting (WB): 1:1,000-1:5,000

Flow Cytometry (FCM): 1:2,000

Immunocytochemistry (IC): 1:100-1:1,000

Note: This product is for research use only.

SUPPORT

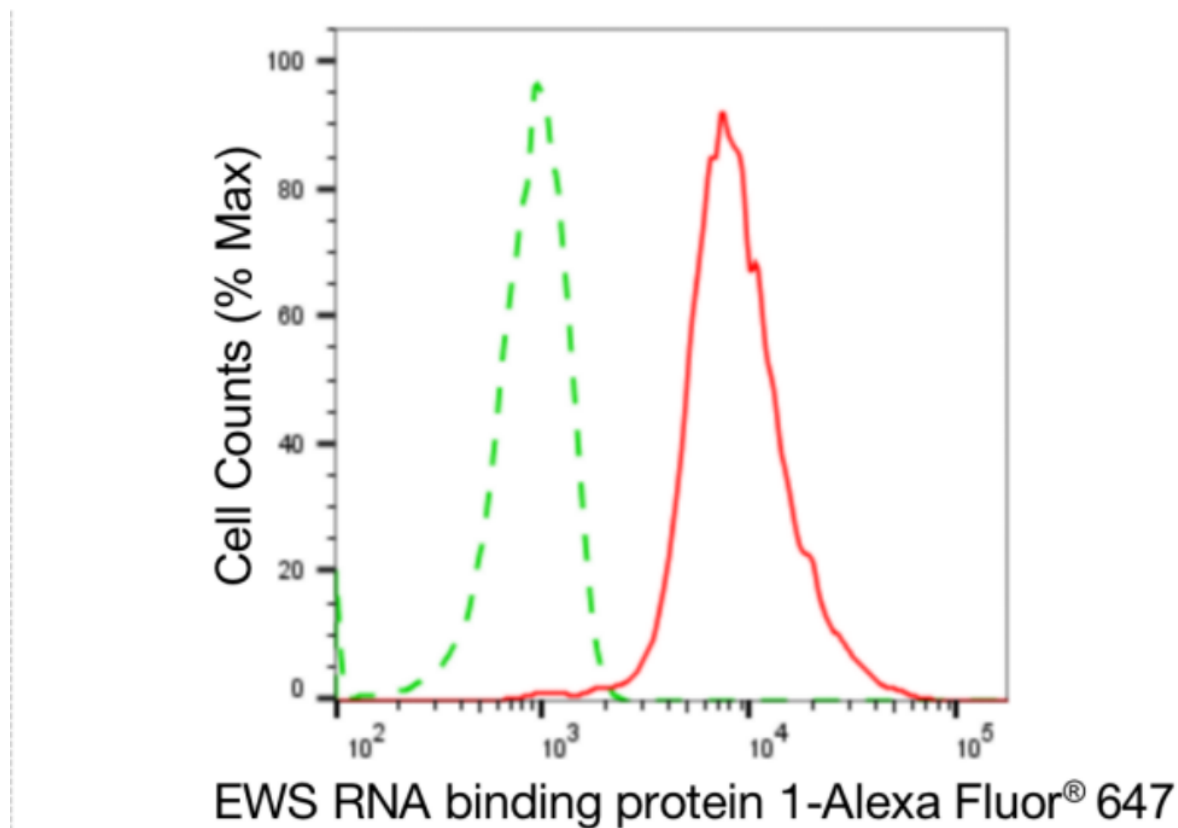
SUPPORT@GENUINBIOTECH.COM
TEL: +1-540-855-7041

ORDERS

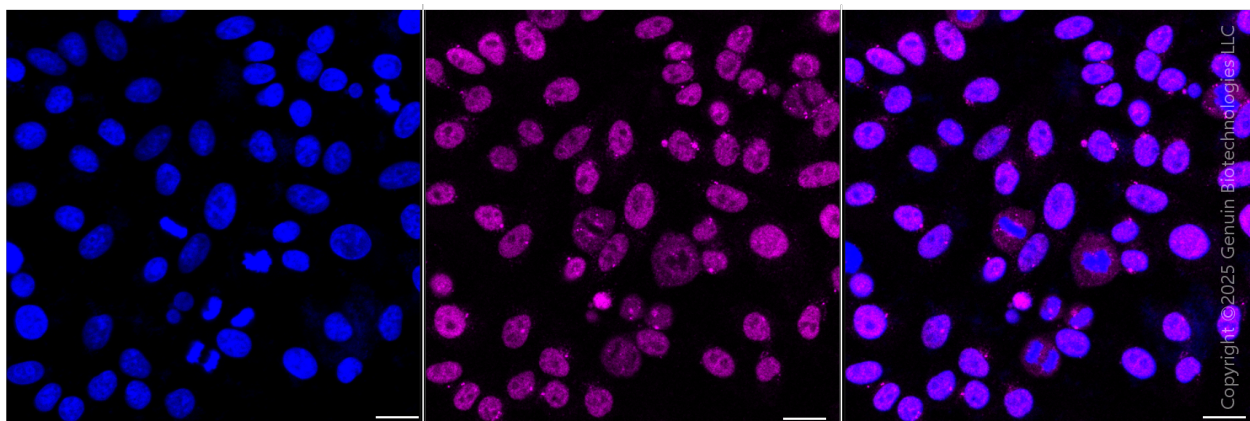
SALES@GENUINBIOTECH.COM
FAX: +1-540-855-7041

WWW.GENUINBIOTECH.COM

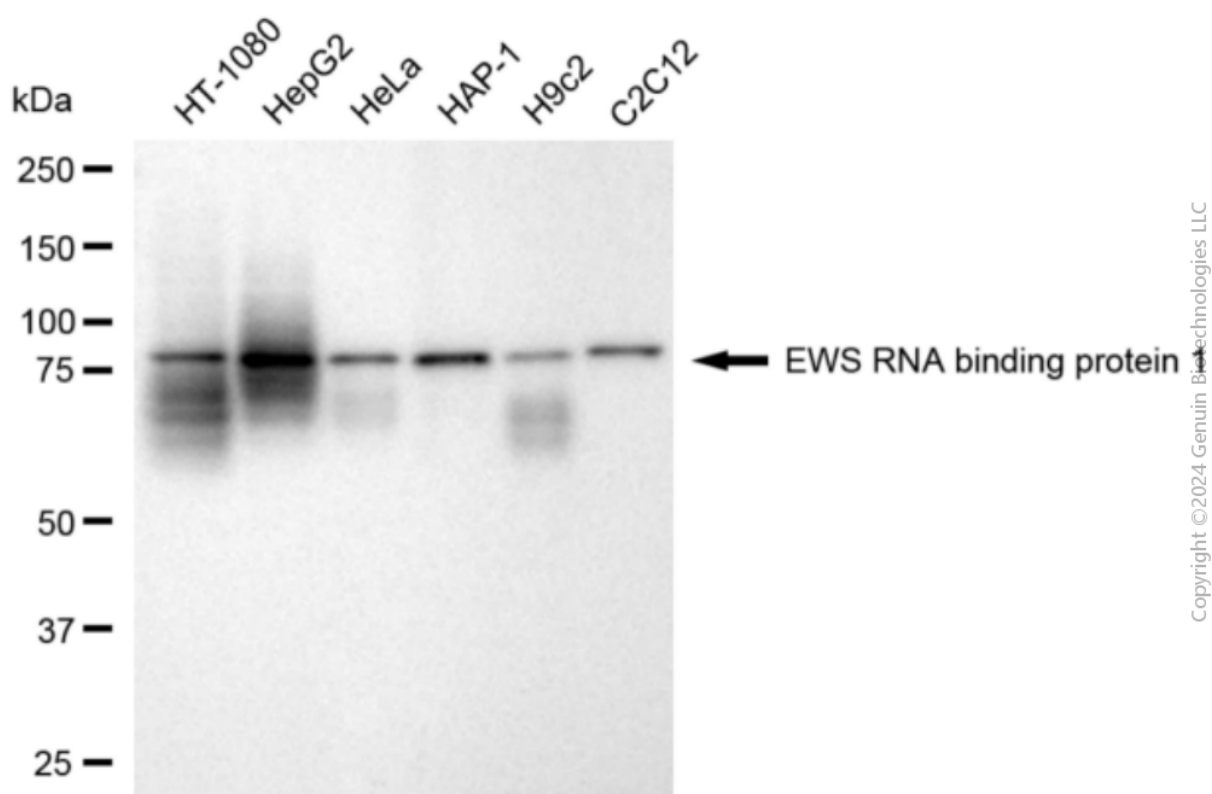
Validation Data



Flow cytometric analysis of EWS RNA binding protein 1 expression in HepG2 cells using anti-EWS RNA binding protein 1 antibody (Cat#3377, 1:2,000). Green, isotype control; red, EWS RNA binding protein 1.



Immunocytochemical staining of HepG2 cells with anti-EWS RNA binding protein 1 antibody (Cat#3377, 1:1,000). Nuclei were stained blue with DAPI; EWS RNA binding protein 1 was stained magenta with Alexa Fluor® 647. Images were taken using Leica stellaris 5. Protein abundance based on laser Intensity and smart gain: Low. Scale bar, 20 μ m.



Western blotting analysis using anti-EWS RNA binding protein 1 antibody (Cat#3377). Total cell lysates (30 μ g) from various cell lines were loaded and separated by SDS-PAGE. The blot was incubated with anti-EWS RNA binding protein 1 antibody (Cat#3377, 1:5,000) and HRP-conjugated goat anti-rabbit secondary antibody (Cat#201, 1:20,000) respectively. Image was developed using NaQ™ ECL Substrate Kit (Cat#716).