

Catalog #: 3398

Aliases

CBR1; Carbonyl Reductase 1; SDR21C1; CBR; Short Chain Dehydrogenase/Reductase Family 21C Member 1; 20-Beta-Hydroxysteroid Dehydrogenase; NADPH-Dependent Carbonyl Reductase 1; Alcohol Dehydrogenase [NAD(P)+] CBR1; Prostaglandin-E(2) 9-Reductase; Prostaglandin 9-Ketoreductase; Carbonyl Reductase [NADPH] 1; EC 1.1.1.184; PG-9-KR; Short Chain Dehydrogenase/Reductase Family 21C, Member 1; 15-Hydroxyprostaglandin Dehydrogenase [NADP(+)]; Epididymis Secretory Sperm Binding Protein; 15-Hydroxyprostaglandin Dehydrogenase; Carbonyl Reductase (NADPH) 1; EC 1.1.1.196; EC 1.1.1.197; EC 1.1.1.189; EC 1.1.1.71; HCBR1; CRN

Background

Gene Name: CBR1

NCBI Gene Entry: [873](#)

UniProt Entry: [P16152](#)

Application Information

Molecular Weight: Predicted, 30 kDa; observed, 30 kDa

Clonality: Mouse monoclonal antibody

Clone ID: 24GB6140

Species Reactivity: Human, mouse, rat

Applications Tested: Western blotting (WB)

Immunogen

Recombinant protein of human CBR1

Isotype

Mouse IgG1

Storage Buffer

Supplied in PBS (pH 7.4) containing 50% glycerol, and 0.02% sodium azide.

Storage

Store at -20 °C for one year.

Recommended Dilutions

Western Blotting (WB): 1:1,000-1:2,500

SUPPORT

SUPPORT@GENUINBIOTECH.COM
TEL: +1-540-855-7041

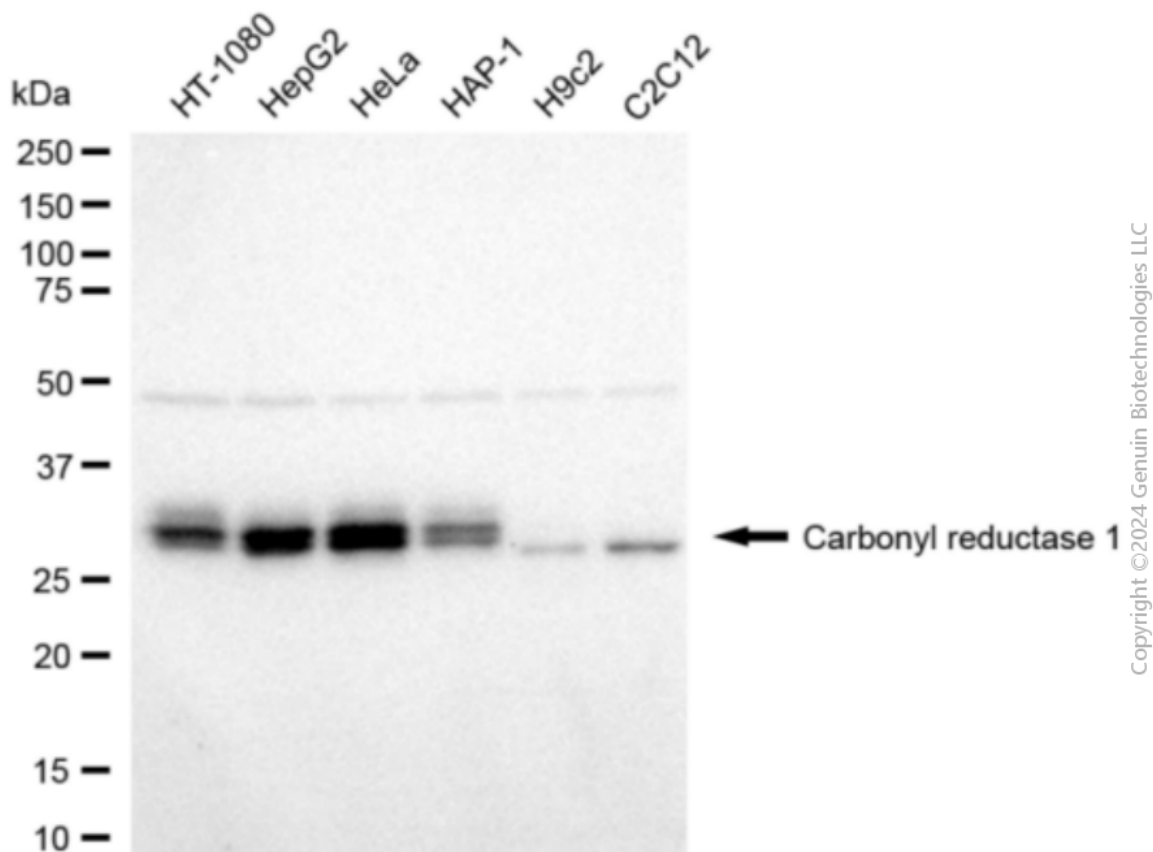
ORDERS

SALES@GENUINBIOTECH.COM
FAX: +1-540-855-7041

WWW.GENUINBIOTECH.COM

Note: This product is for research use only.

Validation Data



Western blotting analysis using anti-carbonyl reductase 1 antibody (Cat#3398). Total cell lysates (30 µg) from various cell lines were loaded and separated by SDS-PAGE. The blot was incubated with anti-carbonyl reductase 1 antibody (Cat#3398, 1:2,500) and HRP-conjugated goat anti-mouse secondary antibody (Cat#101, 1:20,000) respectively. Image was developed using NaQ™ ECL Substrate Kit (Cat#716).