

Catalog #: 3405

Aliases

CDK6; Cyclin Dependent Kinase 6; PLSTIRE; Serine/Threonine-Protein Kinase PLSTIRE; Cell Division Protein Kinase 6; Cyclin-Dependent Kinase 6; EC 2.7.11.22; EC 2.7.11; MCPH12; CDKN6

Background

Gene Name: CDK6

NCBI Gene Entry: [1021](#)

UniProt Entry: [Q00534](#)

Application Information

Molecular Weight: Predicted, 37 kDa; observed, 35 kDa

Clonality: Rabbit monoclonal antibody

Clone ID: 24GB6175

Species Reactivity: Human

Applications Tested: Western blotting (WB)

Immunogen

A synthesized peptide derived from human Cdk6

Isotype

Rabbit IgG

Storage Buffer

Supplied in PBS (pH 7.4) containing 50% glycerol, and 0.02% sodium azide.

Storage

Store at -20 °C for one year.

Recommended Dilutions

Western Blotting (WB): 1:1,000-1:5,000

Note: This product is for research use only.

Validation Data

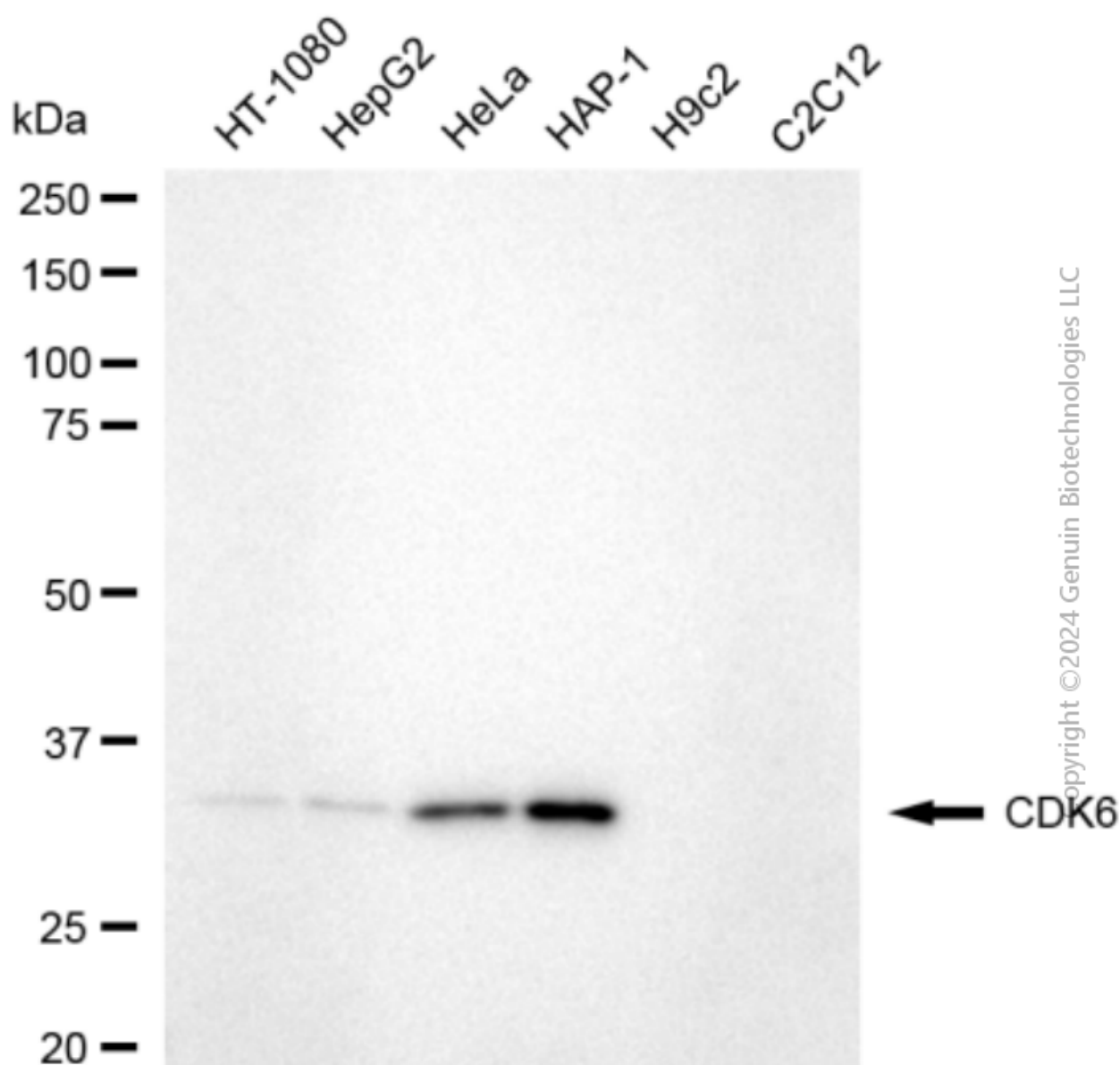
SUPPORT

SUPPORT@GENUINBIOTECH.COM
TEL: +1-540-855-7041

ORDERS

SALES@GENUINBIOTECH.COM
FAX: +1-540-855-7041

WWW.GENUINBIOTECH.COM



Western blotting analysis using anti-CDK6 antibody (Cat#3405). Total cell lysates (30 μ g) from various cell lines were loaded and separated by SDS-PAGE. The blot was incubated with anti-CDK6 antibody (Cat#3405, 1:5,000) and HRP-conjugated goat anti-rabbit secondary antibody (Cat#201, 1:20,000) respectively. Image was developed using NaQ™ ECL Substrate Kit(Cat#716).

SUPPORT

SUPPORT@GENUINBIOTECH.COM
TEL: +1-540-855-7041

ORDERS

SALES@GENUINBIOTECH.COM
FAX: +1-540-855-7041

WWW.GENUINBIOTECH.COM