

Catalog #: 3412

Aliases

HHEX; Hematopoietically Expressed Homeobox; HEX; HOX11L-PEN; PRHX;
Hematopoietically-Expressed Homeobox Protein HHEX; Proline-Rich Homeodomain Protein;
Homeobox Protein HEX; Homeobox Protein PRH; PRH; Proline-Rich Homeodomain-Containing
Transcription Factor; Homeobox, Hematopoietically Expressed; HMPH

Background

Gene Name: HHEX

NCBI Gene Entry: [3087](#)

UniProt Entry: [Q03014](#)

Application Information

Molecular Weight: Predicted, 30 kDa; observed, 43 kDa

Clonality: Mouse monoclonal antibody

Clone ID: 24GB5505

Species Reactivity: Human

Applications Tested: Western blotting (WB), flow cytometry (FCM), immunocytochemistry (IC)

Immunogen

Recombinant protein of human Hex

Isotype

Mouse IgG2b

Storage Buffer

Supplied in PBS (pH 7.4) containing 50% glycerol, and 0.02% sodium azide.

Storage

Store at -20 °C for one year.

Recommended Dilutions

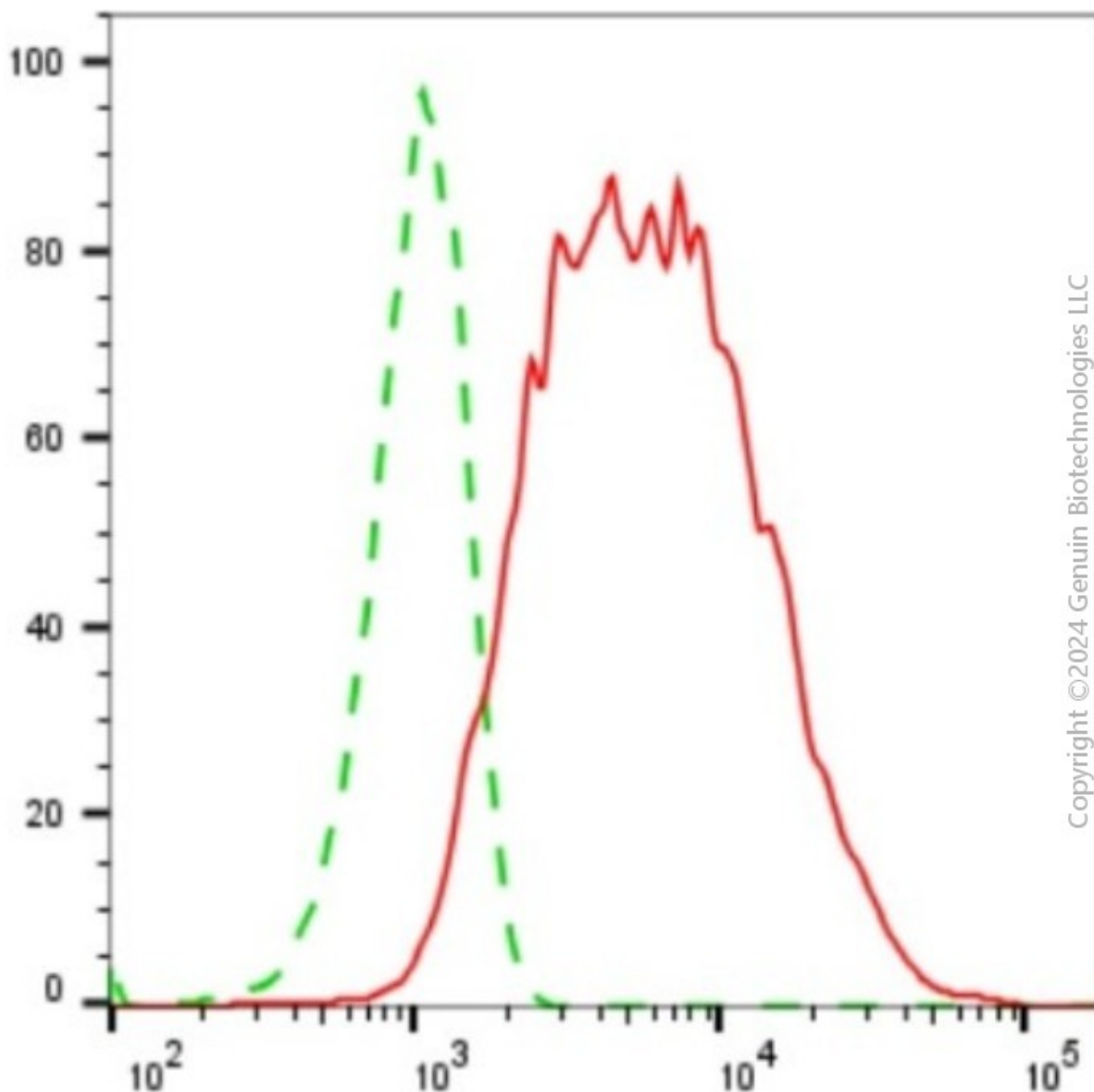
Western Blotting (WB): 1:1,000-1:10,000

Flow Cytometry (FCM): 1:2,000

Immunocytochemistry (IC): 1:100-1:1,000

Note: This product is for research use only.

Validation Data



Flow cytometric analysis of HHEX expression in HepG2 cells using anti-HHEX antibody (Cat#3412, 1:2,000). Green, isotype control; red, HHEX.

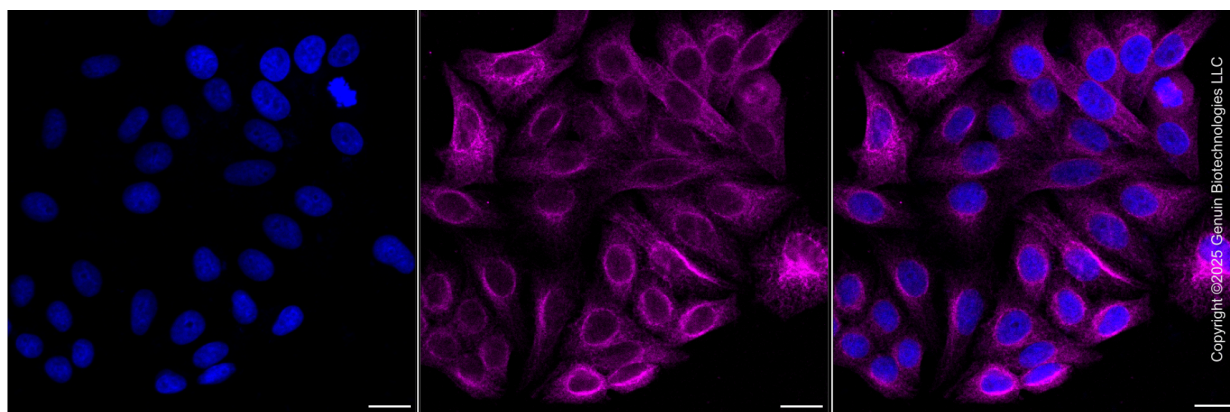
SUPPORT

SUPPORT@GENUINBIOTECH.COM
TEL: +1-540-855-7041

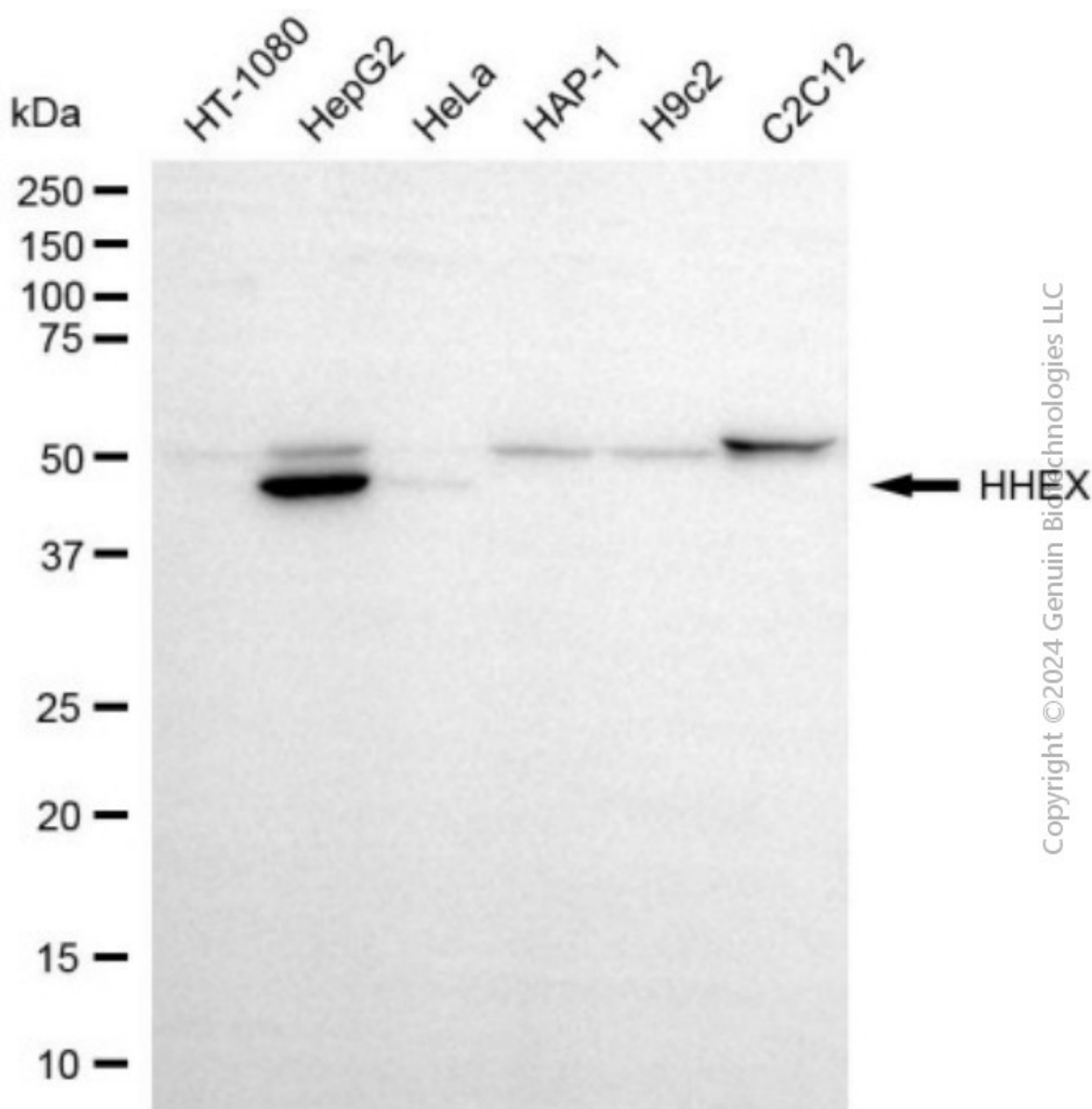
ORDERS

SALES@GENUINBIOTECH.COM
FAX: +1-540-855-7041

WWW.GENUINBIOTECH.COM



Immunocytochemical staining of HepG2 cells with anti-HHEX antibody (Cat#3412, 1:1,000) . Nuclei were stained blue with DAPI; HHEX was stained magenta with Alexa Fluor® 647. Images were taken using Leica stellaris 5. Protein abundance based on laser Intensity and Smart Gain □ Medium. Scale bar, 20 μ m.



Western blotting analysis using anti-HHEX antibody (Cat#3412). Total cell lysates (30 μ g) from various cell lines were loaded and separated by SDS-PAGE. The blot was incubated with anti-HHEX antibody (Cat#3412, 1:10,000) and HRP-conjugated goat anti-mouse secondary antibody (Cat#101, 1:20,000) respectively. Image was developed using FeQ™ ECL Substrate Kit (Cat#226).

SUPPORT

SUPPORT@GENUINBIOTECH.COM
TEL: +1-540-855-7041

ORDERS

SALES@GENUINBIOTECH.COM
FAX: +1-540-855-7041

WWW.GENUINBIOTECH.COM