

Anti-Cyclin Dependent Kinase 5 Mouse Monoclonal Antibody



Catalog #: 3415

Aliases

CDK5; Cyclin Dependent Kinase 5; PSSALRE; Serine/Threonine-Protein Kinase PSSALRE; Tau Protein Kinase II Catalytic Subunit; Cell Division Protein Kinase 5; Cyclin-Dependent-Like Kinase 5; Cyclin-Dependent Kinase 5; TPKII Catalytic Subunit; Epididymis Secretory Sperm Binding Protein; Protein Kinase CDK5 Splicing; EC 2.7.11.22; EC 2.7.11.1; EC 2.7.11; CDKN5; LIS7

Background

Gene Name: CDK5

NCBI Gene Entry: [1020](#)

UniProt Entry: [Q00535](#)

Application Information

Molecular Weight: Predicted, 33 kDa; observed, 33 kDa

Clonality: Mouse monoclonal antibody

Clone ID: 24GB5520

t

Species Reactivity: Human, mouse, rat

Applications Tested: Western blotting (WB), flow cytometry (FCM)

Immunogen

Recombinant protein of human CDK5

Isotype

Mouse IgG1

Storage Buffer

Supplied in PBS (pH 7.4) containing 50% glycerol, and 0.02% sodium azide.

Storage

Store at -20 °C for one year.

Recommended Dilutions

Western Blotting (WB): 1:500-1:2,500

Flow Cytometry (FCM) : 1:2,000

SUPPORT

SUPPORT@GENUINBIOTECH.COM
TEL: +1-540-855-7041

ORDERS

SALES@GENUINBIOTECH.COM
FAX: +1-540-855-7041

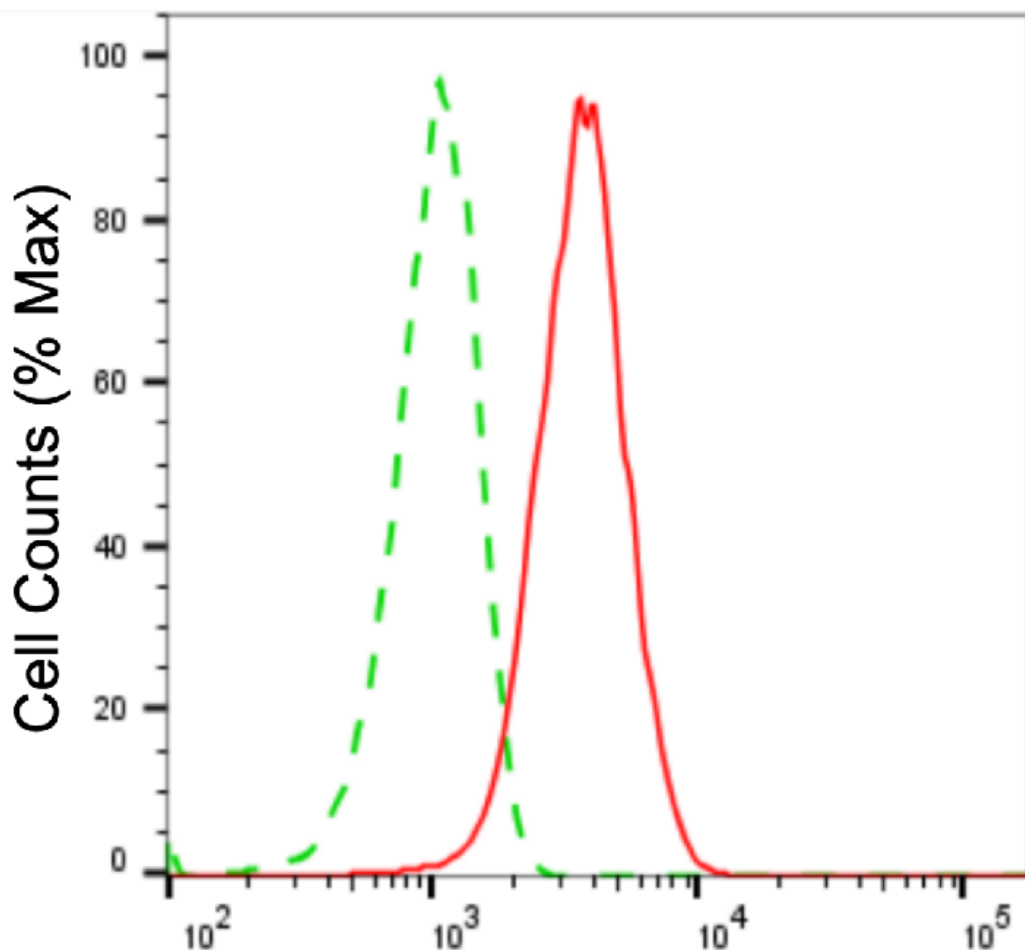
WWW.GENUINBIOTECH.COM

Anti-Cyclin Dependent Kinase 5 Mouse Monoclonal Antibody

PAGE 2

Note: This product is for research use only.

Validation Data



Copyright ©2025 Genuin Biotechnologies LLC

Cyclin dependent kinase 5-Alexa Fluor® 647

Flow cytometric analysis of cyclin dependent kinase 5 expression in HepG2 cells using anti-cyclin dependent kinase 5 antibody (Cat#3415, 1:2,000). Green, isotype control; red, cyclin dependent kinase 5.

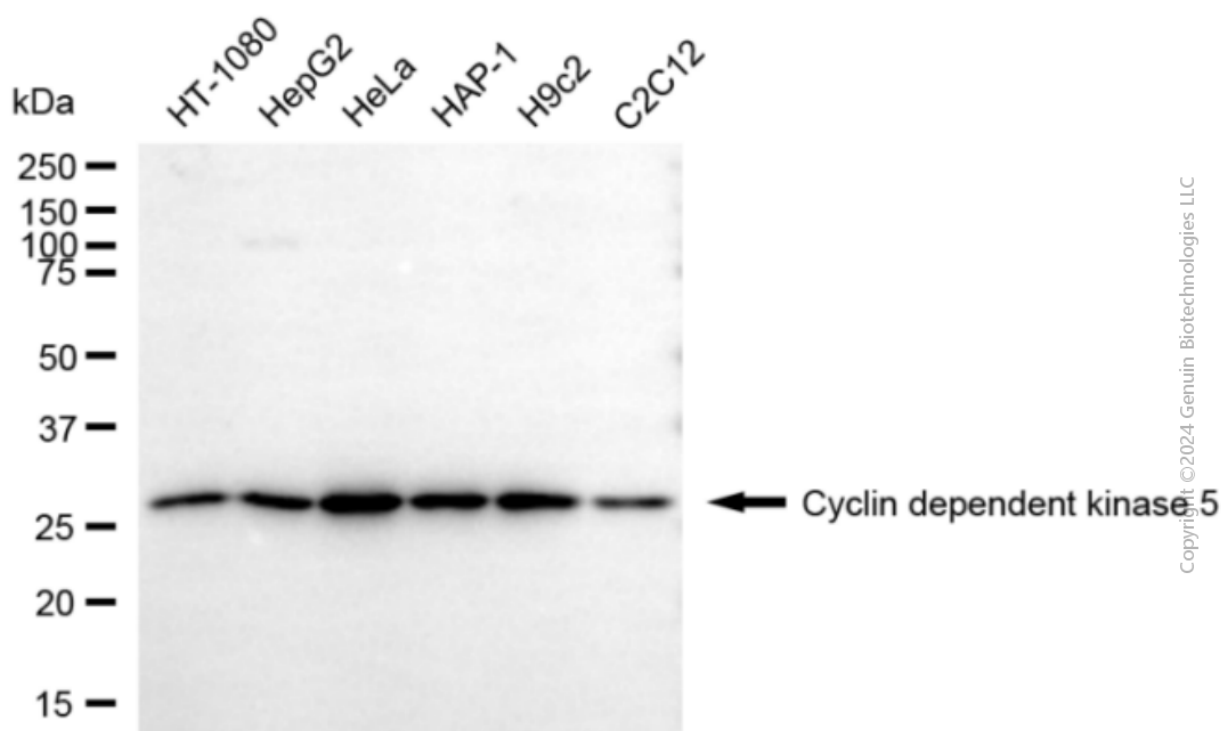
SUPPORT

SUPPORT@GENUINBIOTECH.COM
TEL: +1-540-855-7041

ORDERS

SALES@GENUINBIOTECH.COM
FAX: +1-540-855-7041

WWW.GENUINBIOTECH.COM



Copyright ©2024 Genuin Biotechnologies LLC

Western blotting analysis using anti-cyclin dependent kinase 5 antibody (Cat#3415). Total cell lysates (30 μ g) from various cell lines were loaded and separated by SDS-PAGE. The blot was incubated with anti-cyclin dependent kinase 5 antibody (Cat#3415, 1:2,500) and HRP-conjugated goat anti-mouse secondary antibody (Cat#101, 1:20,000) respectively. Image was developed using FeQ™ ECL Substrate Kit (Cat#226).