

## Catalog #: 3417

### Aliases

Mitotic Arrest Deficient 2 Like 1; MAD2; HSMAD2; MAD2 (Mitotic Arrest Deficient, Yeast, Homolog)-Like 1; Mitotic Spindle Assembly Checkpoint Protein MAD2A; Mitotic Arrest Deficient 2-Like Protein 1; MAD2-Like Protein 1; Mitotic Arrest Deficient, Yeast, Homolog-Like 1; MAD2 Mitotic Arrest Deficient-Like 1; HsMAD2

### Background

Gene Name: MAD2L1

NCBI Gene Entry: [4085](#)

UniProt Entry: [Q13257](#)

### Application Information

Molecular Weight: Predicted, 24 kDa; observed, 24 kDa

Clonality: Mouse monoclonal antibody

Clone ID: 24GB5530

Species Reactivity: Human

Applications Tested: Western blotting (WB), flow cytometry (FCM)

### Immunogen

Recombinant protein of human MAD2L1

### Isotype

Mouse IgG2a

### Storage Buffer

Supplied in PBS (pH 7.4) containing 50% glycerol, and 0.02% sodium azide.

### Storage

Store at -20 °C for one year.

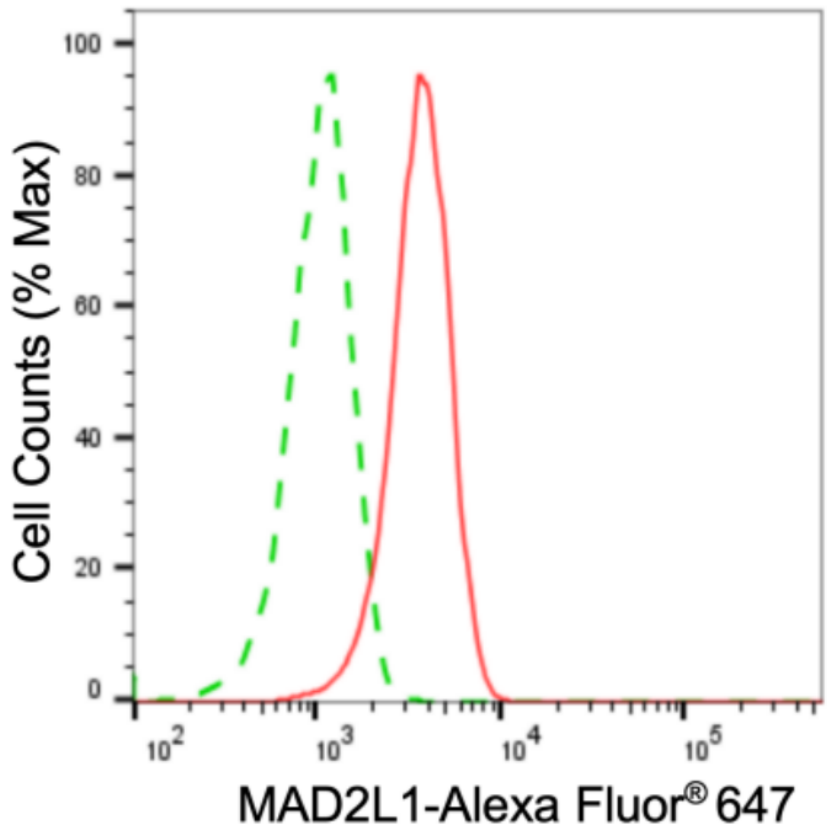
### Recommended Dilutions

Western Blotting (WB): 1:2,500-1:5,000

Flow Cytometry (FCM): 1:2,000

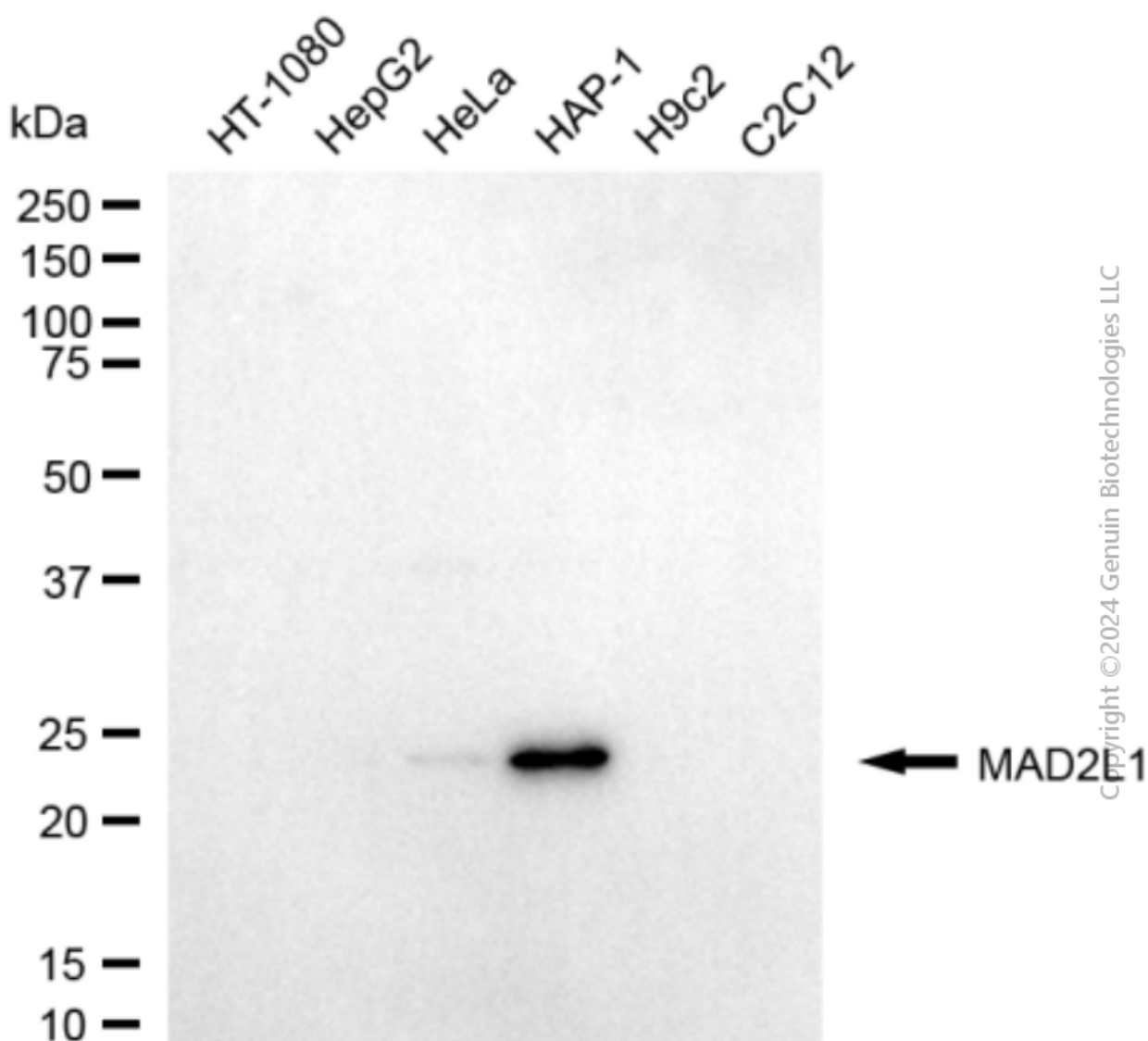
**Note:** This product is for research use only.

Validation Data



Copyright ©2024 Genuin Biotechnologies LLC

Flow cytometric analysis of MAD2L1 expression in HAP-1 cells using anti-MAD2L1 antibody (Cat#3417, 1:2,000). Green, isotype control; red, MAD2L1.



Western blotting analysis using anti-MAD2L1 antibody (Cat#3417). Total cell lysates (30 µg) from various cell lines were loaded and separated by SDS-PAGE. The blot was incubated with anti-MAD2L1 antibody (Cat#3417, 1:5,000) and HRP-conjugated goat anti-mouse secondary antibody (Cat#101, 1:20,000) respectively. Image was developed using FeQ™ ECL Substrate Kit (Cat#226).