

Anti-Gli3 Recombinant Rabbit Monoclonal Antibody



Catalog #: 3433

Aliases

GLI Family Zinc Finger 3; PAP-A; PAPA1; PPDIV; PAPA; PAPB; ACLS; Glioma-Associated Oncogene Family Zinc Finger 3; GLI-Kruppel Family Member GLI3; Transcriptional Activator GLI3; Zinc Finger Protein GLI3; Oncogene GLI3; GLI3-190; GLI3FL; GCPS; PHS; Greig Cephalopolysyndactyly Syndrome; GLI3 Full-Length Protein; GLI3 Form Of 190 KDa; DNA-Binding Protein

Background

Gene Name: GLI3

NCBI Gene Entry: [2737](#)

UniProt Entry: [P10071](#)

Application Information

Molecular Weight: Predicted, 170 kDa; observed, 190 kDa

Clonality: Rabbit monoclonal antibody

Clone ID: 23GB1280

Species Reactivity: Human, mouse, rat

Applications Tested: Western blotting (WB), flow cytometry (FCM), immunocytochemistry (IC)

Immunogen

A synthesized peptide derived from human Gli3

Isotype

Rabbit IgG

Storage Buffer

Supplied in PBS (pH 7.4) containing 50% glycerol, and 0.02% sodium azide.

Storage

Store at -20 °C for one year.

Recommended Dilutions

Western Blotting (WB): 1:1,000-1:5,000

Flow Cytometry (FCM): 1:2,000

Immunocytochemistry (IC): 1:100-1:1,000

SUPPORT

SUPPORT@GENUINBIOTECH.COM
TEL: +1-540-855-7041

ORDERS

SALES@GENUINBIOTECH.COM
FAX: +1-540-855-7041

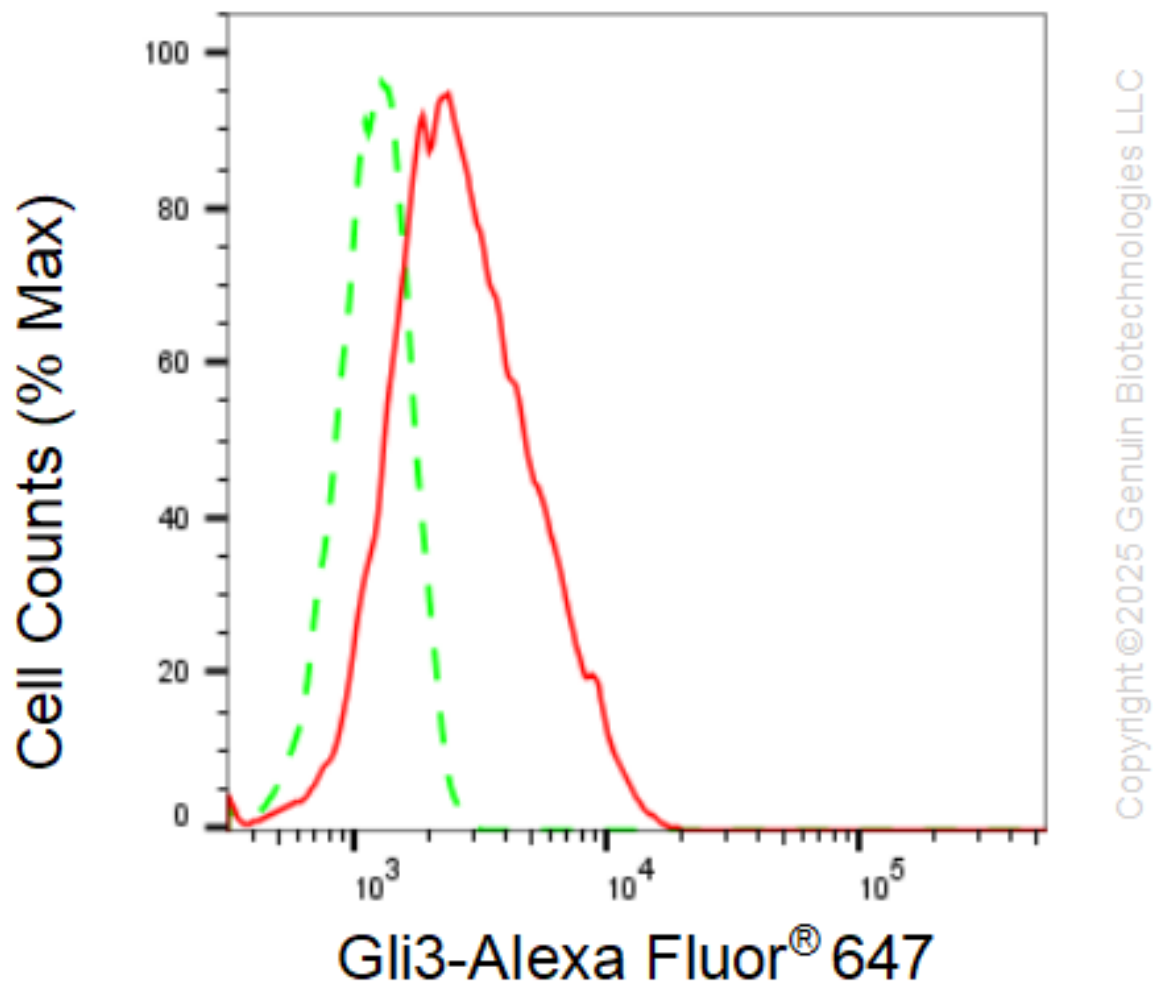
WWW.GENUINBIOTECH.COM

Anti-Gli3 Recombinant Rabbit Monoclonal Antibody

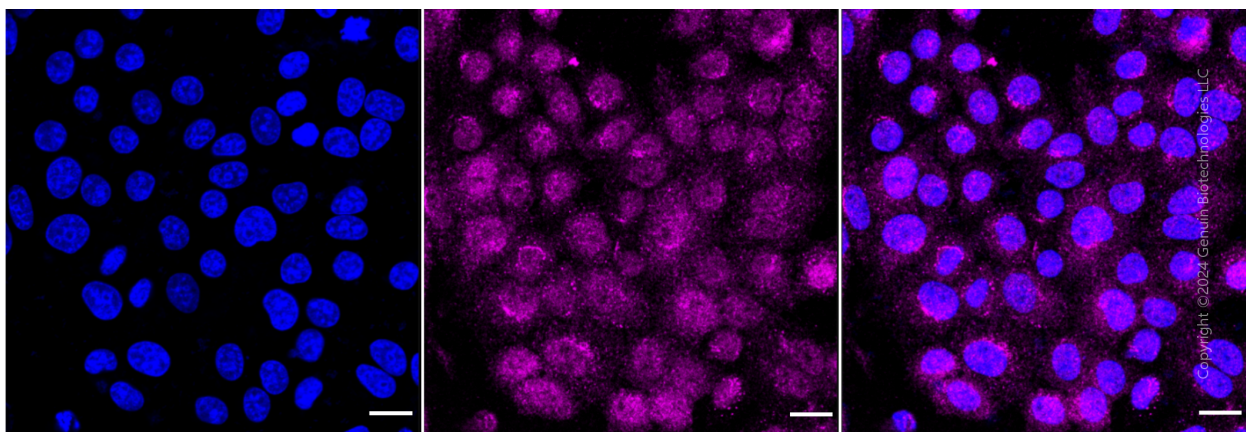
PAGE 2

Note: This product is for research use only.

Validation Data



Flow cytometric analysis of Gli3 expression in HepG2 cells using anti-Gli3 antibody (Cat#3433, 1 µg/2000). Green, isotype control; red, Gli3.



SUPPORT

SUPPORT@GENUINBIOTECH.COM
TEL: +1-540-855-7041

ORDERS

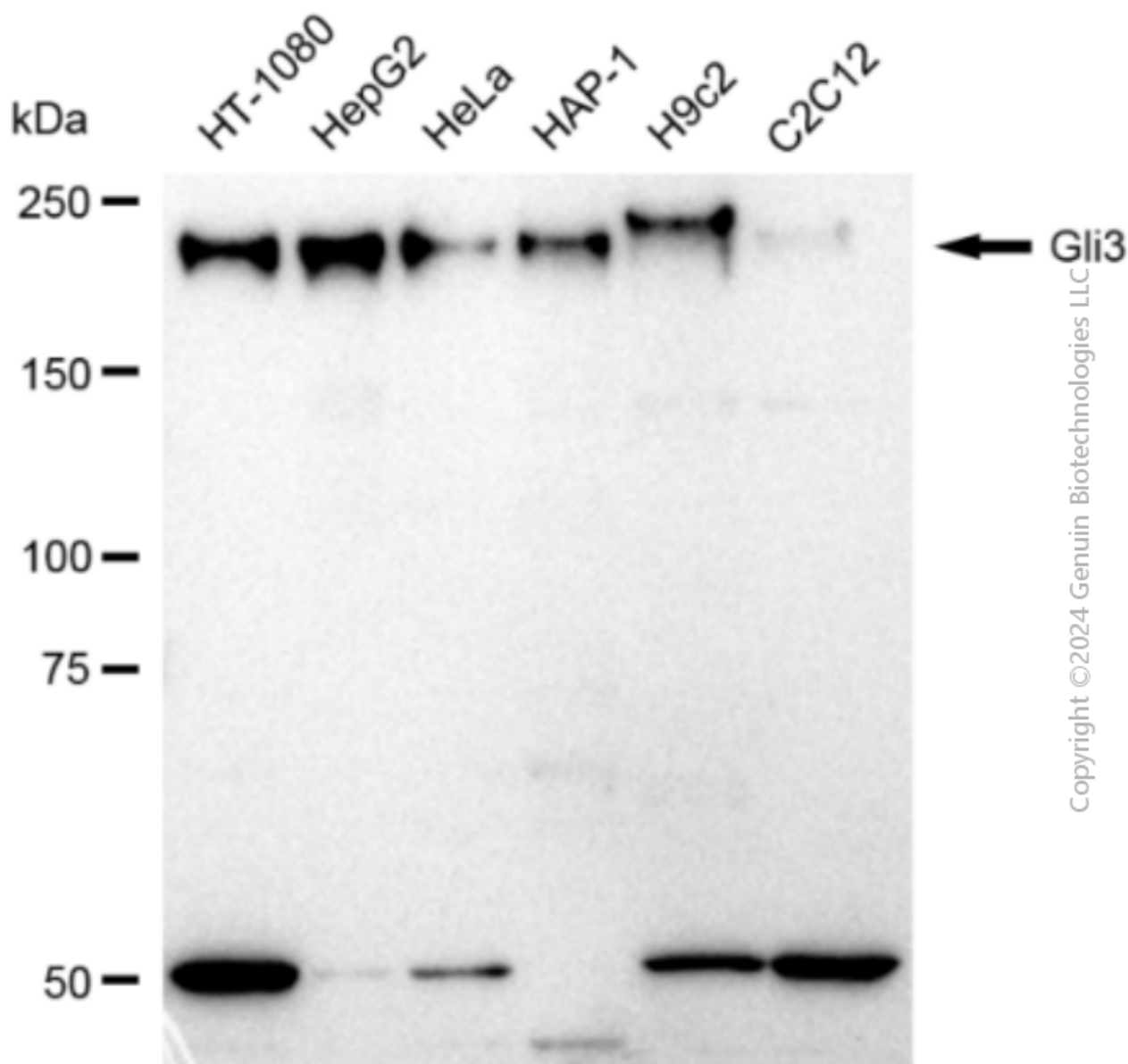
SALES@GENUINBIOTECH.COM
FAX: +1-540-855-7041

WWW.GENUINBIOTECH.COM

Anti-Gli3 Recombinant Rabbit Monoclonal Antibody

PAGE 3

Immunocytochemical staining of HepG2 cells with anti-gli3 antibody (Cat#3433, 1:1,000). Nuclei were stained blue with DAPI; Gli3 was stained magenta with Alexa Fluor® 647. Images were taken using Leica stellaris 5. Protein abundance based on laser Intensity and smart gain: Medium. Scale bar: 20 μ m.



Western blotting analysis using anti-Gli3 antibody (Cat#3433). Total cell lysates (30 μ g) from various cell lines were loaded and separated by SDS-PAGE. The blot was incubated with anti-Gli3 antibody (Cat#3433, 1:5,000) and HRP-conjugated goat anti-rabbit secondary antibody (Cat#201, 1:20,000) respectively. Image was developed using FeQ™ ECL Substrate Kit (Cat#226).

SUPPORT

SUPPORT@GENUINBIOTECH.COM
TEL: +1-540-855-7041

ORDERS

SALES@GENUINBIOTECH.COM
FAX: +1-540-855-7041

WWW.GENUINBIOTECH.COM