

## Catalog #: 3449

### Aliases

AKT1; AKT Serine/Threonine Kinase 1; RAC; PKB; PRKBA; AKT; V-Akt Murine Thymoma Viral Oncogene Homolog 1; RAC-Alpha Serine/Threonine-Protein Kinase; Protein Kinase B Alpha; Proto-Oncogene C-Akt; Protein Kinase B; RAC-PK-Alpha; EC 2.7.11.1; RAC-ALPHA; PKB Alpha; V-Akt Murine Thymoma Viral Oncogene-Like Protein 1; Serine-Threonine Protein Kinase; Rac Protein Kinase Alpha; RAC-Alpha; PKB-ALPHA; EC 2.7.11; AKT1m

### Background

Gene Name: AKT1

NCBI Gene Entry: [207](#)

UniProt Entry: [P31749](#)

### Application Information

Molecular Weight: Predicted, 56 kDa; observed, 56 kDa

Clonality: Mouse monoclonal antibody

Clone ID: 24GB5680

Species Reactivity: Human, mouse, rat

Applications Tested: Western blotting (WB), flow cytometry (FCM), immunocytochemistry (IC)

### Immunogen

Recombinant protein of human AKT1

### Isotype

Mouse IgG1

### Storage Buffer

Supplied in PBS (pH 7.4) containing 50% glycerol, and 0.02% sodium azide.

### Storage

Store at -20 °C for one year.

### Recommended Dilutions

Western Blotting (WB): 1:500-1:2,500

Flow Cytometry (FCM): 1::200-1:2,000

Immunocytochemistry (IC): 1:100-1:1,000

---

#### SUPPORT

SUPPORT@GENUINBIOTECH.COM  
TEL: +1-540-855-7041

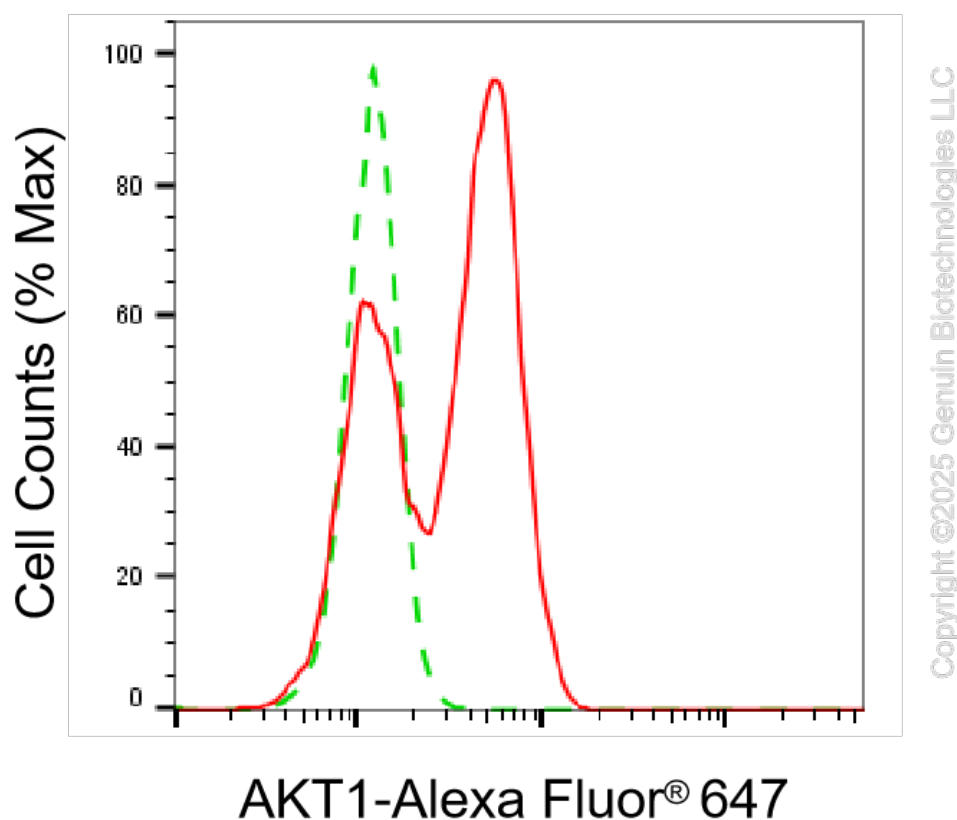
#### ORDERS

SALES@GENUINBIOTECH.COM  
FAX: +1-540-855-7041

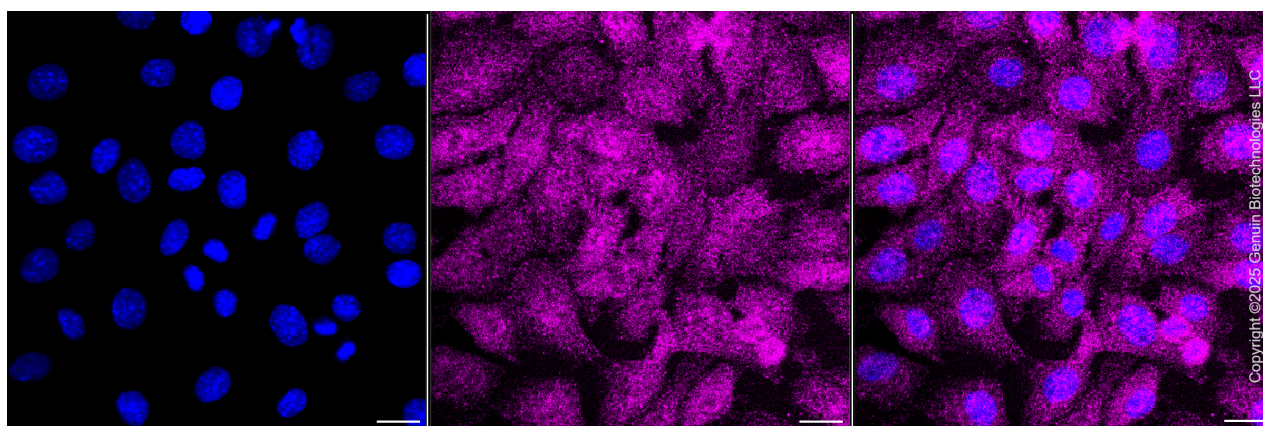
#### WWW.GENUINBIOTECH.COM

**Note:** This product is for research use only.

## Validation Data



Flow cytometric analysis of AKT1 expression in C2C12 cells using anti-AKT1 antibody (Cat#3449, 1:2,000). Green, isotype control; red, AKT1.



Immunocytochemical staining of C2C12 cells with anti-AKT1 antibody (Cat#3449, 1:1,000). Nuclei were stained blue with DAPI; AKT1 was stained magenta with Alexa Fluor 647. Images

### SUPPORT

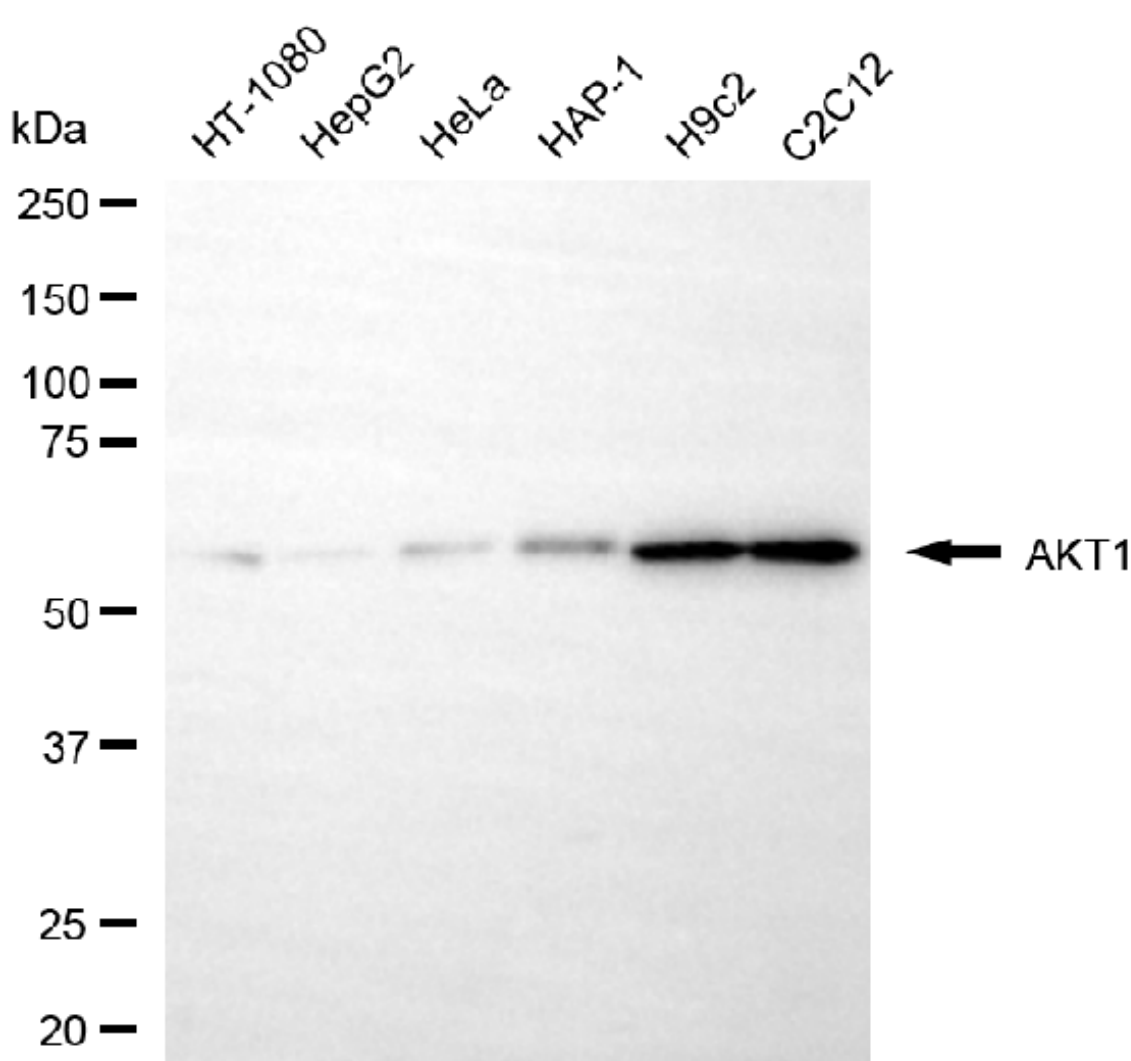
SUPPORT@GENUINBIOTECH.COM  
TEL: +1-540-855-7041

### ORDERS

SALES@GENUINBIOTECH.COM  
FAX: +1-540-855-7041

[WWW.GENUINBIOTECH.COM](http://WWW.GENUINBIOTECH.COM)

were taken using Leica stellaris 5. Protein abundance based on laser Intensity and smart gain: Medium. Scale bar, 20  $\mu$ m.



Copyright ©2025 Genuin Biotechnologies LLC

Western blotting analysis using anti-AKT1 antibody (Cat#3449). Total cell lysates (30  $\mu$ g) from various cell lines were loaded and separated by SDS-PAGE. The blot was incubated with anti-AKT1 antibody (Cat#3449, 1:2,500) and HRP-conjugated goat anti-mouse secondary antibody (Cat#101, 1:20,000) respectively. Image was developed using NaQ™ ECL Substrate Kit (Cat#716).