

Anti-Forkhead Box P1 Mouse Monoclonal Antibody



Catalog #: 3460

Aliases

FOXP1; Forkhead Box P1; HSPC215; HFKH1B; 12CC4; QRF1; Fork Head-Related Protein Like B; Mac-1-Regulated Forkhead; Glutamine-Rich Factor 1; Forkhead Box Protein P1; MFH; PAX5/FOXP1 Fusion Protein

Background

Gene Name: FOXP1

NCBI Gene Entry: [27086](#)

UniProt Entry: [Q9H334](#)

Application Information

Molecular Weight: Predicted, 75 kDa; observed, 75 kDa

Clonality: Mouse monoclonal antibody

Clone ID: 24GB5735

Species Reactivity: Human

Applications Tested: Western blotting (WB), immunocytochemistry (IC), flow cytometry (FCM)

Immunogen

Recombinant protein of human FOXP1

Isotype

Mouse IgG1

Storage Buffer

Supplied in PBS (pH 7.4) containing 50% glycerol, and 0.02% sodium azide.

Storage

Store at -20 °C for one year.

Recommended Dilutions

Western Blotting (WB): 1:2,500-1:5,000

Immunocytochemistry (IC): 1:100-1:1,000

Flow Cytometry (FCM) : 1:2,000

Note: This product is for research use only.

SUPPORT

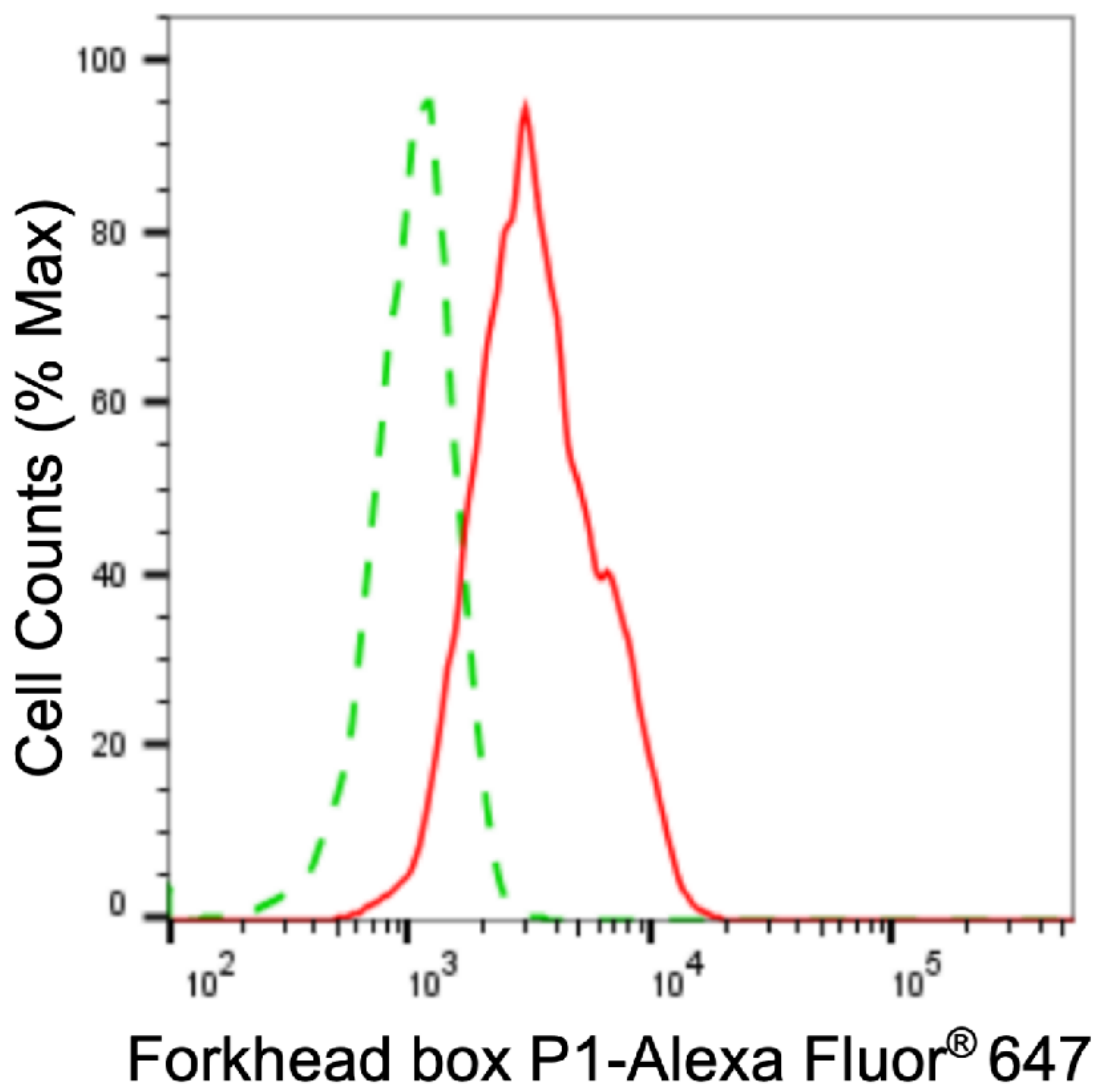
SUPPORT@GENUINBIOTECH.COM
TEL: +1-540-855-7041

ORDERS

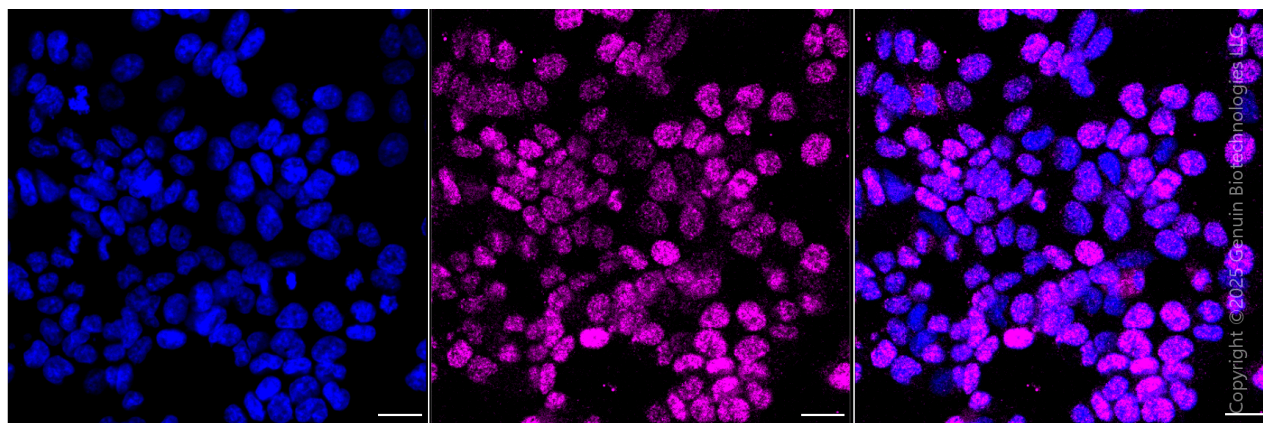
SALES@GENUINBIOTECH.COM
FAX: +1-540-855-7041

WWW.GENUINBIOTECH.COM

Validation Data



Flow cytometric analysis of Forkhead box P1 expression in HAP-1 cells using anti-Forkhead box P1 antibody (Cat#3460, 1:2,000). Green, isotype control; red, Forkhead box P1.



SUPPORT

SUPPORT@GENUINBIOTECH.COM
TEL: +1-540-855-7041

ORDERS

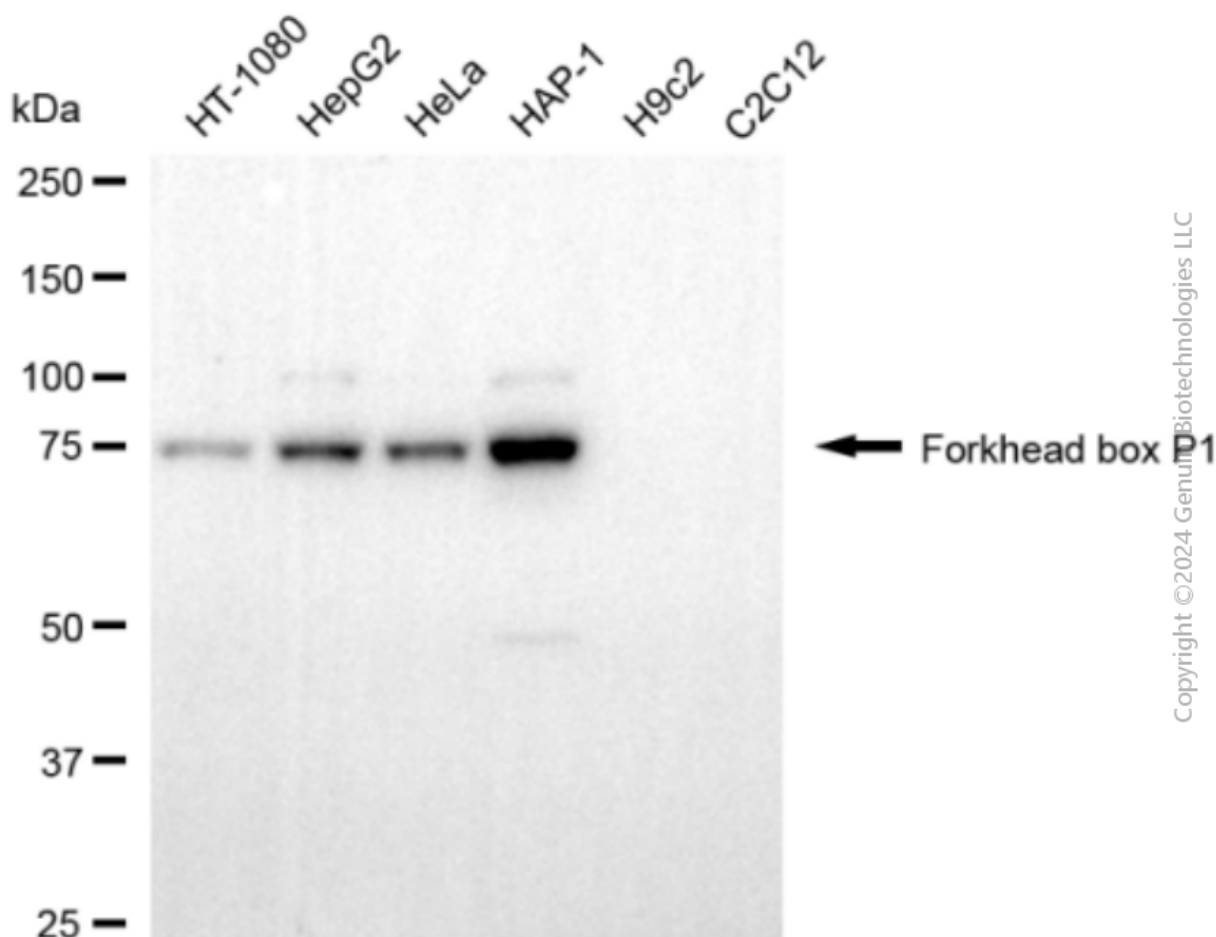
SALES@GENUINBIOTECH.COM
FAX: +1-540-855-7041

WWW.GENUINBIOTECH.COM

Anti-Forkhead Box P1 Mouse Monoclonal Antibody

PAGE 3

Immunocytochemical staining of HAP-1 cells with Forkhead box P1 antibody (Cat#3460, 1:1,000). Nuclei were stained blue with DAPI; Forkhead box P1 was stained magenta with Alexa Fluor® 647. Images were taken using Leica stellaris 5. Protein abundance based on laser Intensity and smart gain: . Scale bar, 20 μ m.



Western blotting analysis using anti-forkhead box P1 antibody (Cat#3460). Total cell lysates (30 μ g) from various cell lines were loaded and separated by SDS-PAGE. The blot was incubated with anti-forkhead box P1 antibody (Cat#3460, 1:5,000) and HRP-conjugated goat anti-mouse secondary antibody (Cat#101, 1:20,000) respectively. Image was developed using NaQ™ ECL Substrate Kit(Cat#716).

SUPPORT

SUPPORT@GENUINBIOTECH.COM
TEL: +1-540-855-7041

ORDERS

SALES@GENUINBIOTECH.COM
FAX: +1-540-855-7041

WWW.GENUINBIOTECH.COM