

## Catalog #: 3466

### Aliases

CDH1; Cadherin 1; Uvomorulin; CD324; UVO; Cadherin 1, Type 1, E-Cadherin (Epithelial); Epithelial Cadherin; E-Cadherin; Cadherin-1; CAM 120/80; CDHE; Calcium-Dependent Adhesion Protein, Epithelial; Epididymis Secretory Sperm Binding Protein; Cadherin 1, E-Cadherin (Epithelial); Cell-CAM 120/80; CD324 Antigen; E-Cadherin 1; UVOMORULIN; Arc-1; BCDS1; ECAD; LCAM

### Background

Gene Name: CDH1  
NCBI Gene Entry: [999](#)  
UniProt Entry: [P12830](#)

### Application Information

Molecular Weight: Predicted, 97 kDa; observed, 105/135 kDa  
Clonality: Mouse monoclonal antibody  
Clone ID: 24GB5765  
Species Reactivity: Human  
Applications Tested: Western blotting (WB), immunohistochemistry (IHC)

### Immunogen

Recombinant protein of human CDH1

### Isotype

Mouse IgG1

### Storage Buffer

Supplied in PBS (pH 7.4) containing 50% glycerol, and 0.02% sodium azide.

### Storage

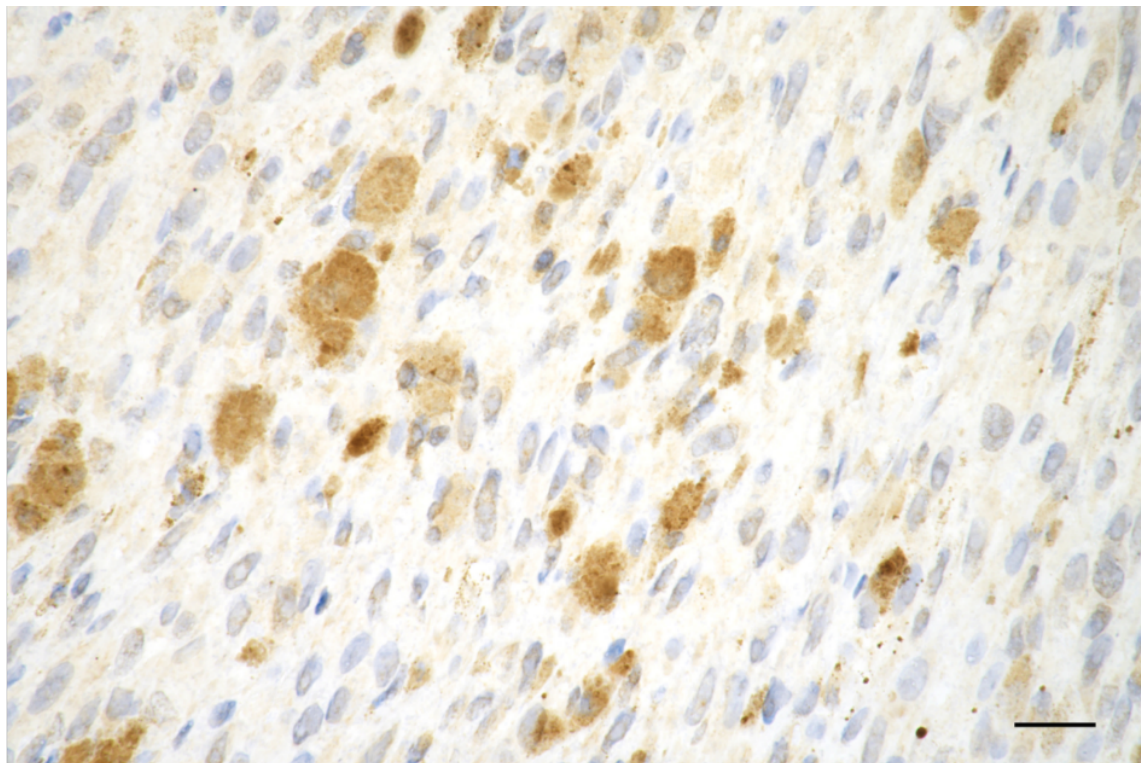
Store at -20 °C for one year.

### Recommended Dilutions

Western Blotting (WB): 1:1,000-1:5,000  
Immunohistochemistry (IHC): 1:75-1:150

**Note:** This product is for research use only.

## Validation Data



Copyright ©2025 Genuin Biotechnologies LLC

Immunohistochemistry was performed on paraffin-embedded human breast carcinoma using anti-cadherin 1 antibody (Cat#3466, 1:150). Antigen retrieval was done in sodium citrate buffer (pH 6.0). DAB was used for detection, with hematoxylin counterstaining. Images were acquired using a Nikon Ci-L Plus microscope (40× objective). Scale bar: 25  $\mu$ m.

---

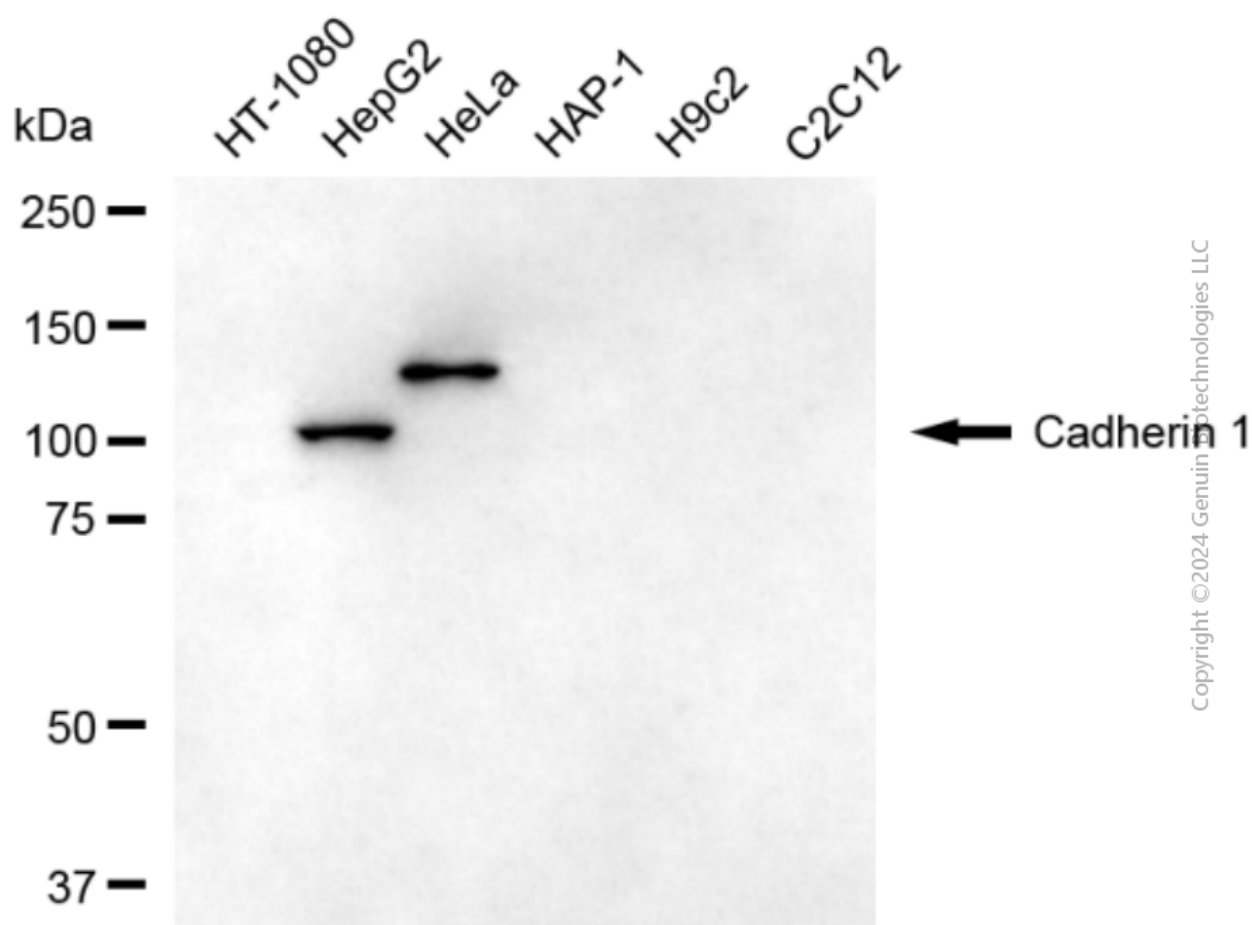
### SUPPORT

SUPPORT@GENUINBIOTECH.COM  
TEL: +1-540-855-7041

### ORDERS

SALES@GENUINBIOTECH.COM  
FAX: +1-540-855-7041

[WWW.GENUINBIOTECH.COM](http://WWW.GENUINBIOTECH.COM)



Western blotting analysis using anti-cadherin 1 antibody (Cat#3466). Total cell lysates (30  $\mu$ g) from various cell lines were loaded and separated by SDS-PAGE. The blot was incubated with anti-cadherin 1 antibody (Cat#3466, 1:5,000) and HRP-conjugated goat anti-mouse secondary antibody (Cat#101, 1:20,000) respectively. Image was developed using FeQ™ ECL Substrate Kit (Cat#226).