

Anti-DEAD-Box Helicase 6 Mouse Monoclonal Antibody



Catalog #: 3477

Aliases

DDX6; DEAD-Box Helicase 6; RC; HLR2; DEAD/H (Asp-Glu-Ala-Asp/His) Box Polypeptide 6 (RNA Helicase, 54kD); DEAD (Asp-Glu-Ala-Asp) Box Polypeptide 6; Probable ATP-Dependent RNA Helicase DDX6; DEAD (Asp-Glu-Ala-Asp) Box Helicase 6; ATP-Dependent RNA Helicase P54; DEAD Box Protein 6; Oncogene RCK; Rck/P54; EC 3.6.4.13; DEAD Box-6; EC 3.6.1; RCK/P54; IDDILF; P54

Background

Gene Name: DDX6

NCBI Gene Entry: [1656](#)

UniProt Entry: [P26196](#)

Application Information

Molecular Weight: Predicted, 54 kDa; observed, 54 kDa

Clonality: Mouse monoclonal antibody

Clone ID: 24GB5810

Species Reactivity: Human, mouse, rat

Applications Tested: Western blotting (WB), flow cytometry (FCM), immunocytochemistry (IC)

Immunogen

Recombinant protein of human DDX6

Isotype

Mouse IgG2a

Storage Buffer

Supplied in PBS (pH 7.4) containing 50% glycerol, and 0.02% sodium azide.

Storage

Store at -20 °C for one year.

Recommended Dilutions

Western Blotting (WB): 1:2,500-1:5,000

Flow Cytometry (FCM): 1:2,000

Immunocytochemistry (IC): 1:100-1:1,000

SUPPORT

SUPPORT@GENUINBIOTECH.COM
TEL: +1-540-855-7041

ORDERS

SALES@GENUINBIOTECH.COM
FAX: +1-540-855-7041

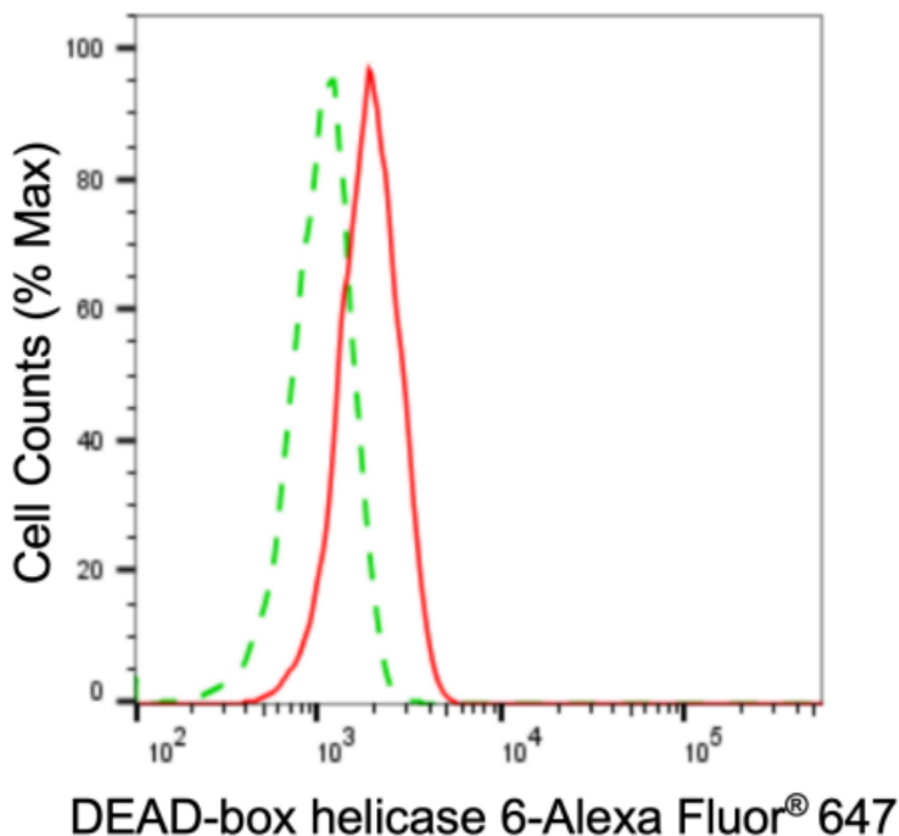
WWW.GENUINBIOTECH.COM

Anti-DEAD-Box Helicase 6 Mouse Monoclonal Antibody

PAGE 2

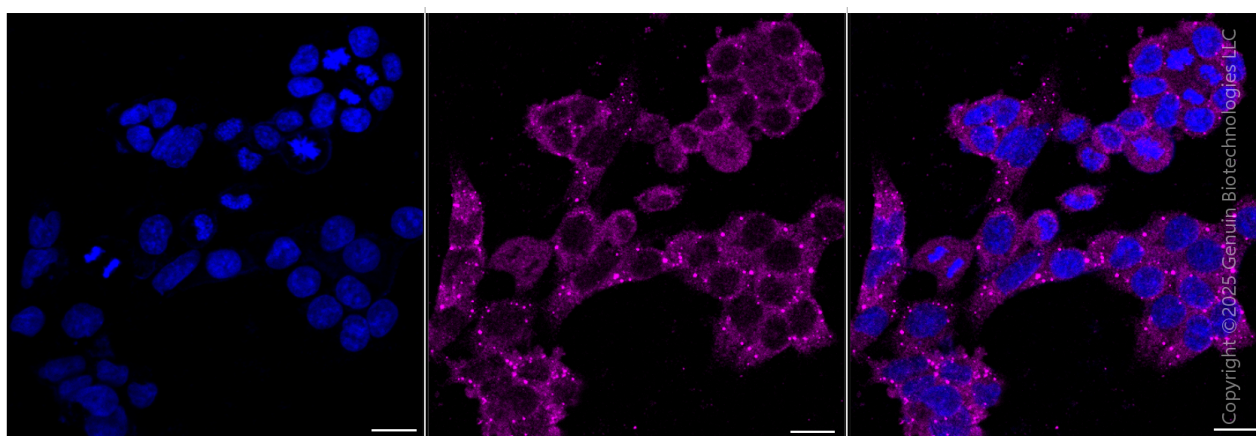
Note: This product is for research use only.

Validation Data



Copyright ©2024 Genuin Biotechnologies LLC

Flow cytometric analysis of DEAD-box helicase 6 expression in HAP-1 cells using anti-DEAD-box helicase 6 antibody (Cat#3477, 1:2,000). Green, isotype control; red, DEAD-box helicase 6.



Immunocytochemical staining of HAP-1 cells with DEAD-box helicase 6 antibody (Cat#3477, 1:1,000) . Nuclei were stained blue with DAPI; DEAD-box helicase 6 was stained magenta with Alexa Fluor® 647. Images were taken using Leica stellaris 5. Protein abundance based on laser Intensity and smart gain: Low. Scale bar, 20 μ m.

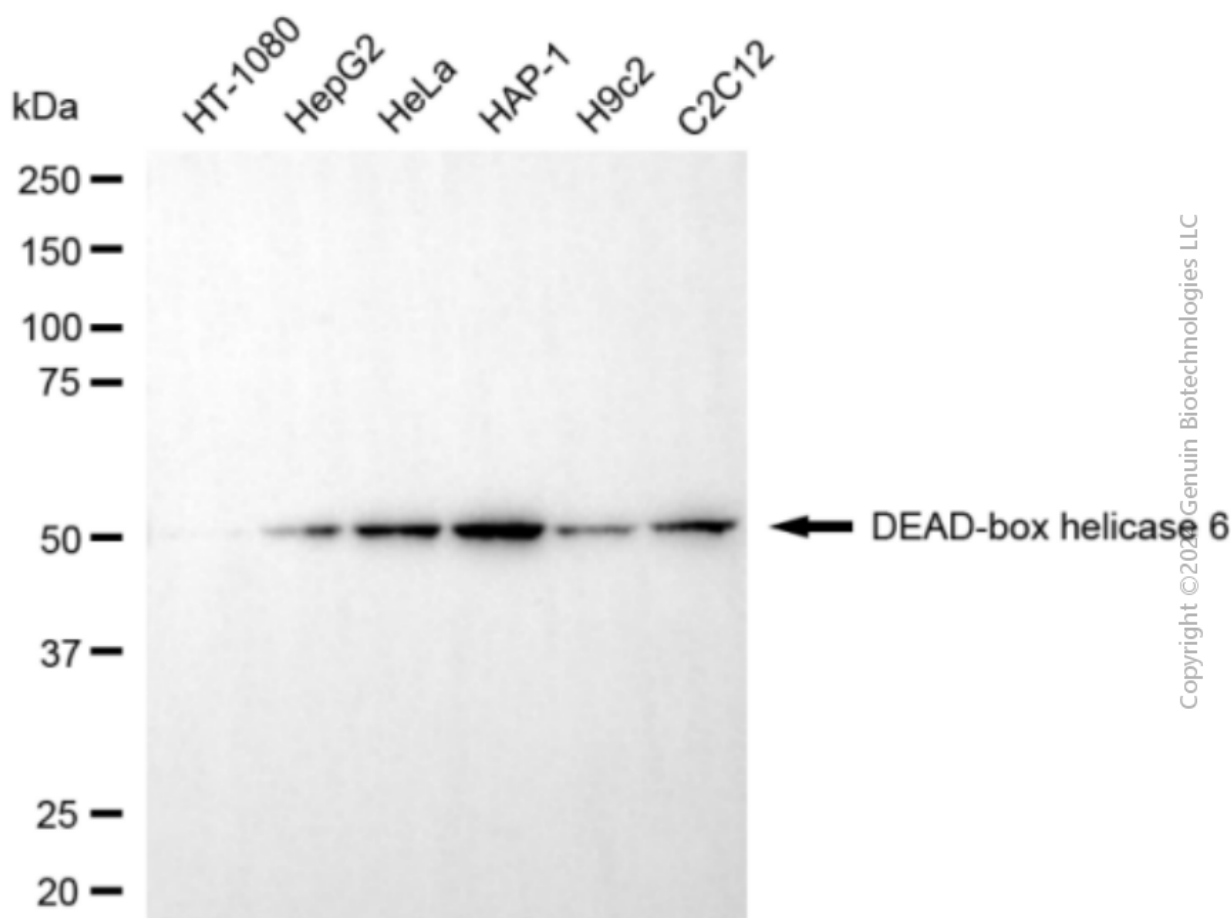
SUPPORT

SUPPORT@GENUINBIOTECH.COM
TEL: +1-540-855-7041

ORDERS

SALES@GENUINBIOTECH.COM
FAX: +1-540-855-7041

WWW.GENUINBIOTECH.COM



Western blotting analysis using anti-DEAD-box helicase 6 antibody (Cat#3477). Total cell lysates (30 µg) from various cell lines were loaded and separated by SDS-PAGE. The blot was incubated with anti-DEAD-box helicase 6 antibody (Cat#3477, 1:5,000) and HRP-conjugated goat anti-mouse secondary antibody (Cat#101, 1:20,000) respectively. Image was developed using NaQ™ ECL Substrate Kit(Cat#716).