

Anti-Interleukin 12B Mouse Monoclonal Antibody



Catalog #: 3483

Aliases

IL12B; Interleukin 12B; IL-12B; CLMF2; NKSF2; CLMF; NKSF; Interleukin 12B (Natural Killer Cell Stimulatory Factor 2, Cytotoxic Lymphocyte Maturation Factor 2, P40); Natural Killer Cell Stimulatory Factor, 40 KD Subunit; Cytotoxic Lymphocyte Maturation Factor 40 KDa Subunit; NK Cell Stimulatory Factor Chain; Interleukin-12 Subunit Beta; Interleukin-12 Beta Chain; Interleukin 12, P40; IL12, Subunit P40; IL-12 Subunit P40; CLMF P40; Cytotoxic Lymphocyte Maturation Factor 2, P40; Natural Killer Cell Stimulatory Factor-2; IMD28; IMD29

Background

Gene Name: IL12B

NCBI Gene Entry: [3593](#)

UniProt Entry: [P29460](#)

Application Information

Molecular Weight: Predicted, 37 kDa; observed, 40 kDa

Clonality: Mouse monoclonal antibody

Clone ID: 24GB5840

Species Reactivity: Human, rat

Applications Tested: Western blotting (WB), flow cytometry (FCM), immunocytochemistry (IC)

Immunogen

Recombinant protein of human IL12B

Isotype

Mouse IgG1

Storage Buffer

Supplied in PBS (pH 7.4) containing 50% glycerol, and 0.02% sodium azide.

Storage

Store at -20 °C for one year.

Recommended Dilutions

Western Blotting (WB): 1:2,500-1:5,000

Flow Cytometry (FCM): 1:2,000

Immunocytochemistry (IC): 1:100-1:1,000

SUPPORT

SUPPORT@GENUINBIOTECH.COM
TEL: +1-540-855-7041

ORDERS

SALES@GENUINBIOTECH.COM
FAX: +1-540-855-7041

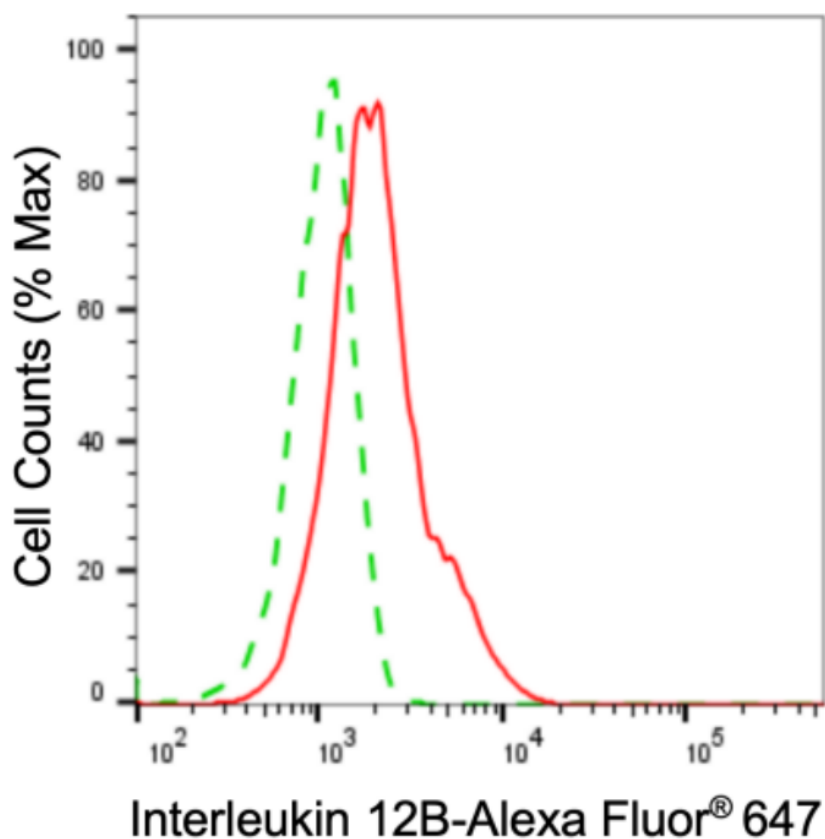
WWW.GENUINBIOTECH.COM

Anti-Interleukin 12B Mouse Monoclonal Antibody

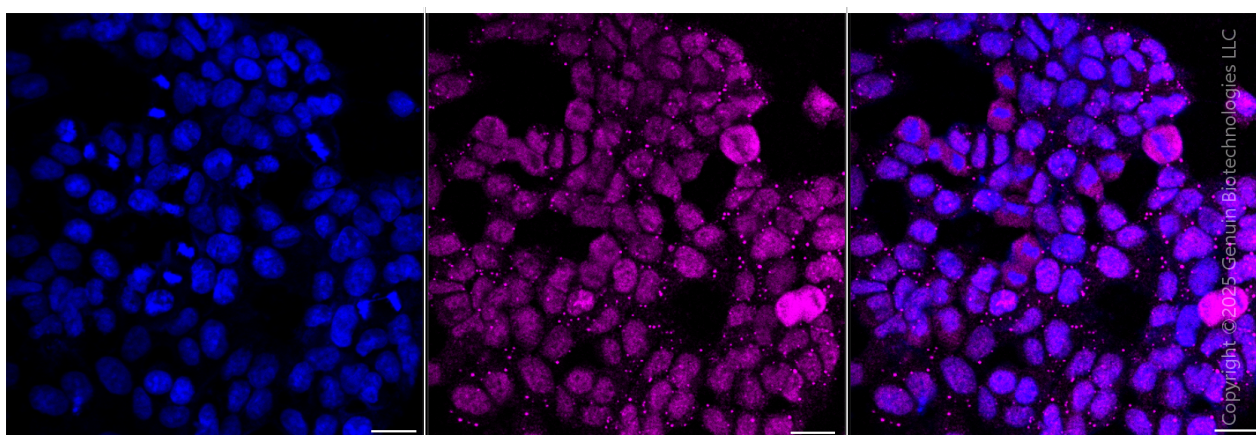
PAGE 2

Note: This product is for research use only.

Validation Data



Flow cytometric analysis of Interleukin 12B expression in HAP-1 cells using anti-Interleukin 12B antibody (Cat#3483, 1:2,000). Green, isotype control; red, Interleukin 12B.



Immunocytochemical staining of HAP-1 cells with Interleukin 12B antibody (Cat#3483, 1:1,000). Nuclei were stained blue with DAPI; Interleukin 12B was stained magenta with Alexa Fluor® 647. Images were taken using Leica stellaris 5. Protein abundance based on laser Intensity and

SUPPORT

SUPPORT@GENUINBIOTECH.COM
TEL: +1-540-855-7041

ORDERS

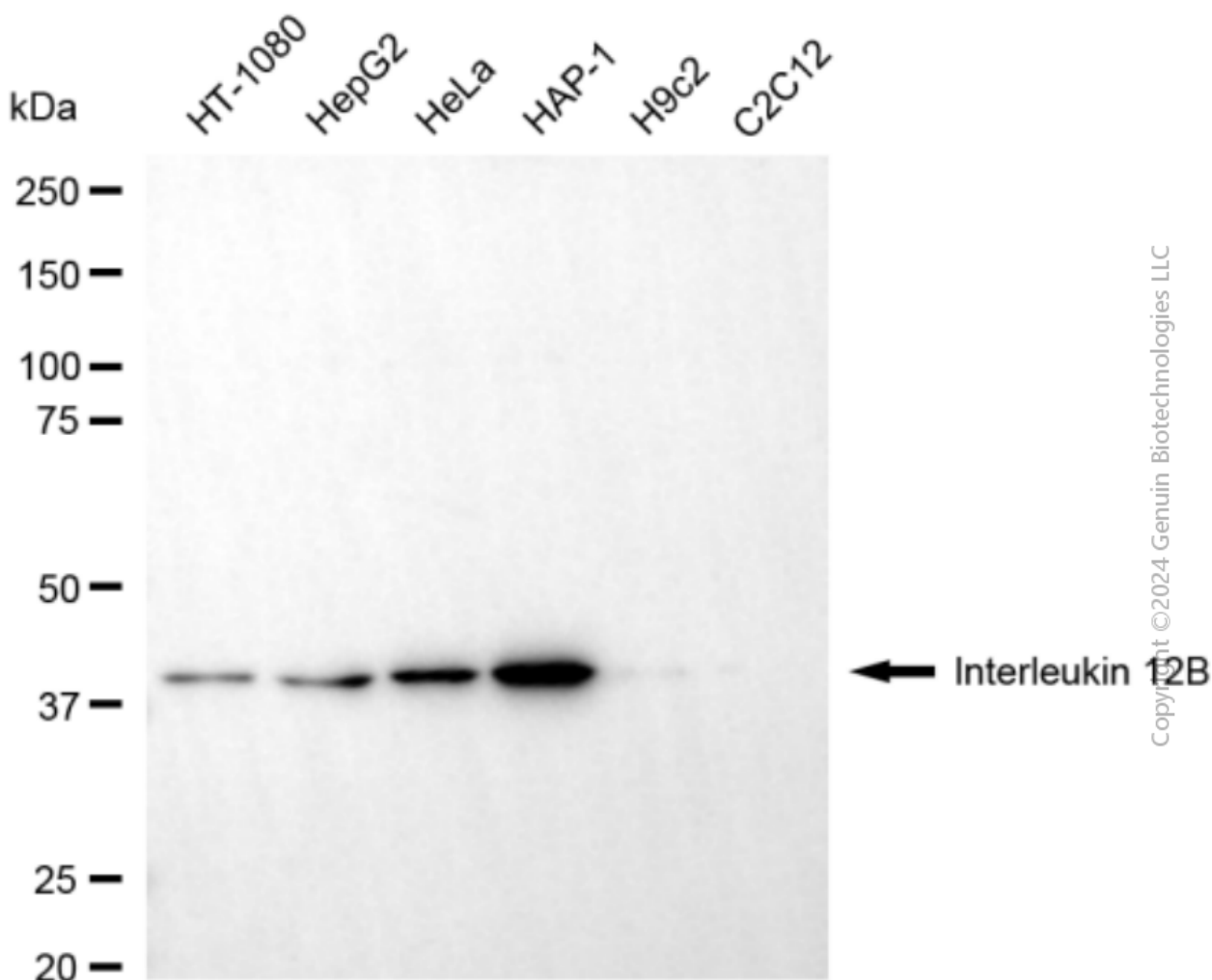
SALES@GENUINBIOTECH.COM
FAX: +1-540-855-7041

WWW.GENUINBIOTECH.COM

Anti-Interleukin 12B Mouse Monoclonal Antibody

PAGE 3

smart gain: Medium. Scale bar, 20 μ m.



Western blotting analysis using anti-interleukin 12B antibody (Cat#3483). Total cell lysates (30 μ g) from various cell lines were loaded and separated by SDS-PAGE. The blot was incubated with anti-interleukin 12B antibody (Cat#3483, 1:5,000) and HRP-conjugated goat anti-mouse secondary antibody (Cat#101, 1:20,000) respectively. Image was developed using NaQ™ ECL Substrate Kit (Cat#716).

SUPPORT

SUPPORT@GENUINBIOTECH.COM
TEL: +1-540-855-7041

ORDERS

SALES@GENUINBIOTECH.COM
FAX: +1-540-855-7041

WWW.GENUINBIOTECH.COM