

# Anti-CD22 Molecule Mouse Monoclonal Antibody



**Catalog #: 3484**

## Aliases

CD22; CD22 Molecule; SIGLEC2; CD22 Antigen; SIGLEC-2; Sialic Acid-Binding Ig-Like Lectin; B-Lymphocyte Cell Adhesion Molecule; T-Cell Surface Antigen Leu-14; B-Cell Receptor CD22; BL-CAM; Sialic Acid Binding Ig-Like Lectin 2; Siglec-2

## Background

Gene Name: CD22

NCBI Gene Entry: [933](#)

UniProt Entry: [P20273](#)

## Application Information

Molecular Weight: Predicted, 95 kDa; observed, 130 kDa

Clonality: Mouse monoclonal antibody

Clone ID: 24GB5845

Species Reactivity: Rat

Applications Tested: Western blotting (WB), flow cytometry (FCM)

## Immunogen

Recombinant protein of human CD22

## Isotype

Mouse IgG1

## Storage Buffer

Supplied in PBS (pH 7.4) containing 50% glycerol, and 0.02% sodium azide.

## Storage

Store at -20 °C for one year.

## Recommended Dilutions

Western Blotting (WB): 1:1,000-1:5,000

Flow Cytometry (FCM): 1::200-1:2,000

**Note:** This product is for research use only.

## Validation Data

---

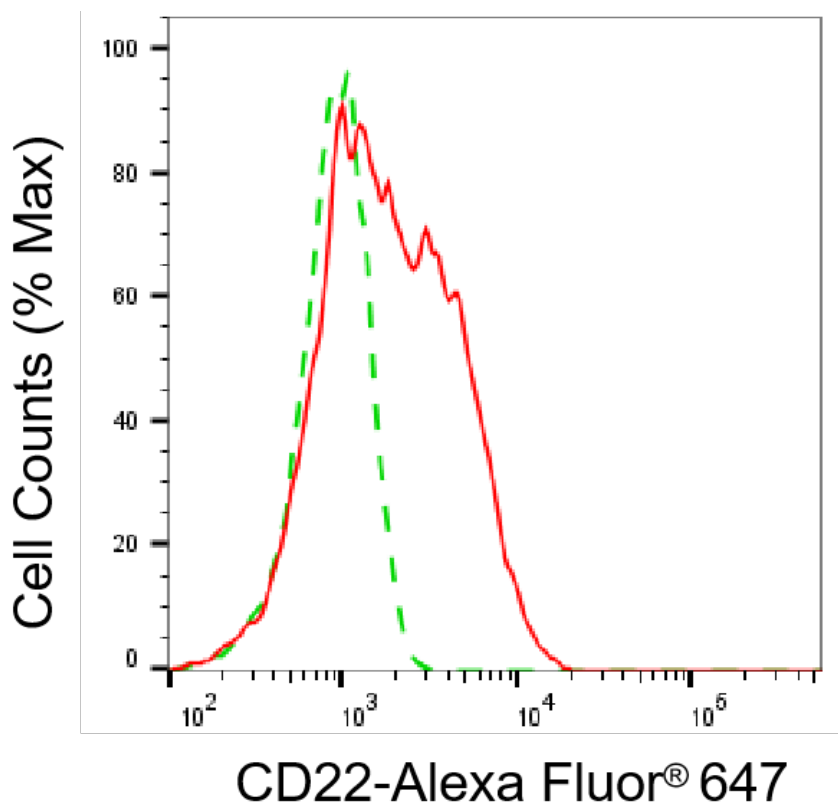
### SUPPORT

SUPPORT@GENUINBIOTECH.COM  
TEL: +1-540-855-7041

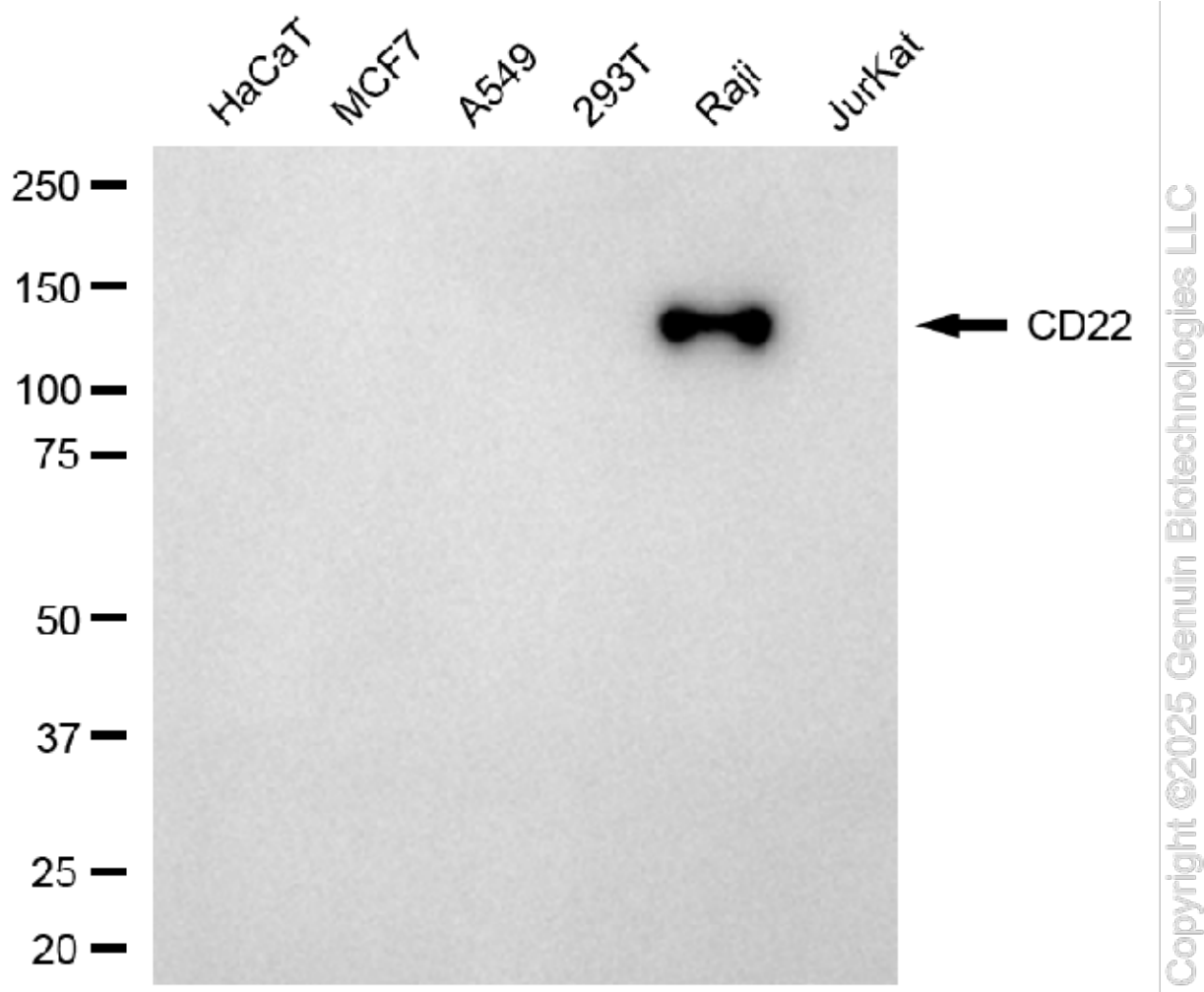
### ORDERS

SALES@GENUINBIOTECH.COM  
FAX: +1-540-855-7041

[WWW.GENUINBIOTECH.COM](http://WWW.GENUINBIOTECH.COM)



Flow cytometric analysis of CD22 expression in Raji cells using anti-CD22 antibody (Cat#3484, 1:2,000). Green, isotype control; red, CD22.



Western blotting analysis using anti-CD22 antibody (Cat#3484). Total cell lysates (30 µg) from various cell lines were loaded and separated by SDS-PAGE. The blot was incubated with anti-CD22 antibody (Cat#3484, 1:5,000) and HRP-conjugated goat anti-mouse secondary antibody (Cat#101, 1:20,000) respectively. Image was developed using FeQ™ ECL Substrate Kit (Cat#226).