

# Anti-Adenylosuccinate Lyase Mouse Monoclonal Antibody



**Catalog #: 3504**

## Aliases

ADSL; Adenylosuccinate Lyase; Adenylosuccinase; EC 4.3.2.2; AMPS; ASL; EC 4.3.2; ASASE; ASase

## Background

Gene Name: ADSL

NCBI Gene Entry: [158](#)

UniProt Entry: [P30566](#)

## Application Information

Molecular Weight: Predicted, 55 kDa; observed, 48 kDa

Clonality: Mouse monoclonal antibody

Clone ID: 24GB6250

Species Reactivity: Human, rat

Applications Tested: Western blotting (WB), flow cytometry (FCM)

## Immunogen

Recombinant protein of human ADSL

## Isotype

Mouse IgG1

## Storage Buffer

Supplied in PBS (pH 7.4) containing 50% glycerol, and 0.02% sodium azide.

## Storage

Store at -20 °C for one year.

## Recommended Dilutions

Western Blotting (WB): 1:2,500-1:5,000

Flow Cytometry (FCM): 1:2,000

**Note:** This product is for research use only.

## Validation Data

---

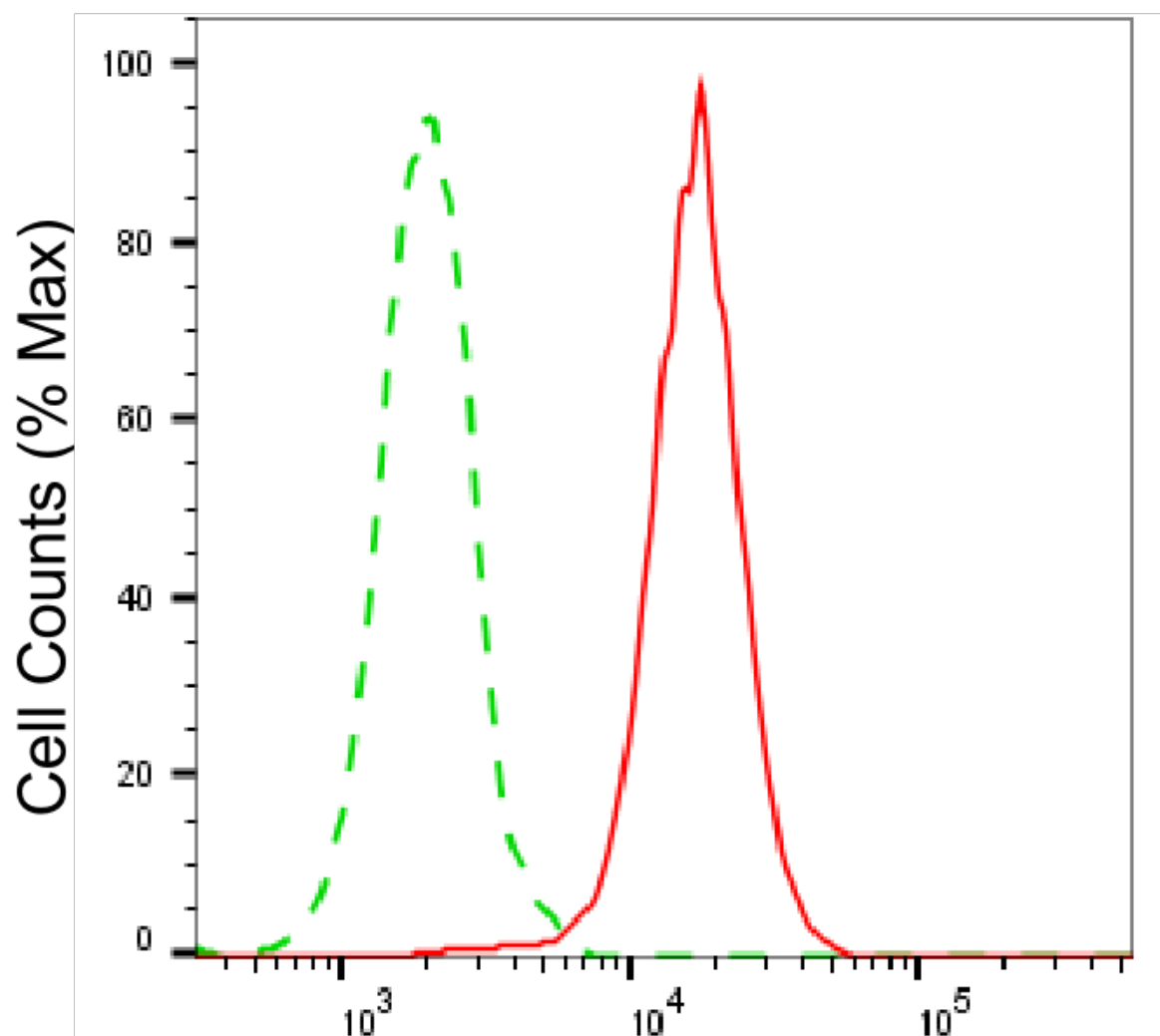
### SUPPORT

SUPPORT@GENUINBIOTECH.COM  
TEL: +1-540-855-7041

### ORDERS

SALES@GENUINBIOTECH.COM  
FAX: +1-540-855-7041

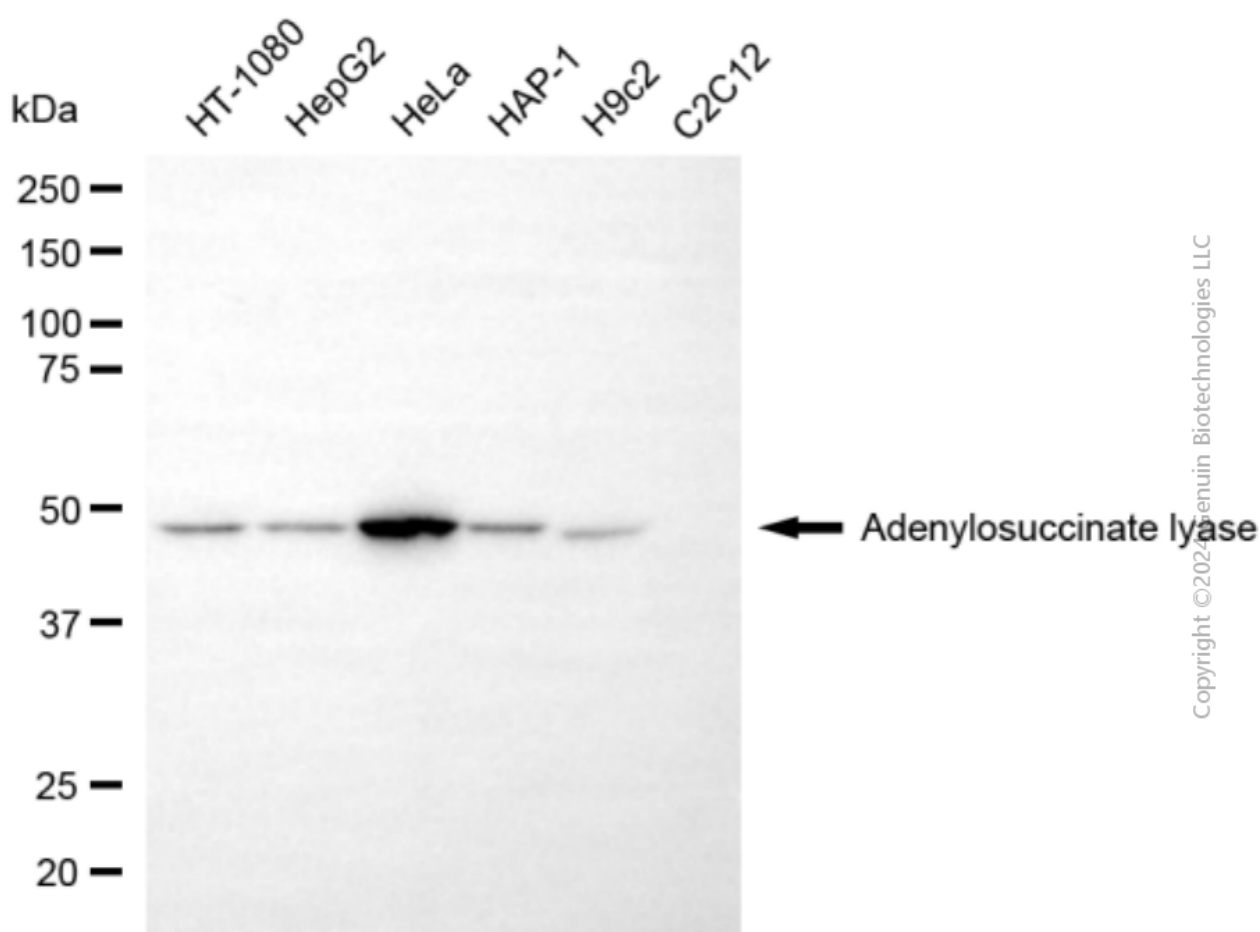
[WWW.GENUINBIOTECH.COM](http://WWW.GENUINBIOTECH.COM)



Copyright ©2025 Genuin Biotechnologies LLC

## Adenylosuccinate lyase-Alexa Fluor® 647

Flow cytometric analysis of Adenylosuccinate lyase expression in HeLa cells using anti-Adenylosuccinate lyase antibody (Cat#3504, 1:2,000). Green, isotype control; red, Adenylosuccinate lyase.



Copyright © 2024 Genuin Biotechnologies LLC

Western blotting analysis using anti-adenylosuccinate lyase antibody (Cat#3504). Total cell lysates (30 µg) from various cell lines were loaded and separated by SDS-PAGE. The blot was incubated with anti-adenylosuccinate lyase antibody (Cat#3504, 1:5,000) and HRP-conjugated goat anti-mouse secondary antibody (Cat#101, 1:20,000) respectively. Image was developed using FeQ™ ECL Substrate Kit (Cat#226).