

Catalog #: 3506

Aliases

ALDH1L1; Aldehyde Dehydrogenase 1 Family Member L1; FDH; Cytosolic 10-Formyltetrahydrofolate Dehydrogenase; 10-FTHF; FTHFD; 10-FTHFDH; Aldehyde Dehydrogenase 1 Family, Member L1; Aldehyde Dehydrogenase Family 1 Member L1; 10-Formyltetrahydrofolate Dehydrogenase; Formyltetrahydrofolate Dehydrogenase; MER57B-ALDH1L1; EC 1.5.1.6

Background

Gene Name: ALDH1L1

NCBI Gene Entry: [10840](#)

UniProt Entry: [O75891](#)

Application Information

Molecular Weight: Predicted, 99 kDa; observed, 99 kDa

Clonality: Mouse monoclonal antibody

Clone ID: 24GB6260

Species Reactivity: Human, mouse, rat

Applications Tested: Western blotting (WB)

Immunogen

Recombinant protein of human ALDH1L1

Isotype

Mouse IgG2b

Storage Buffer

Supplied in PBS (pH 7.4) containing 50% glycerol, and 0.02% sodium azide.

Storage

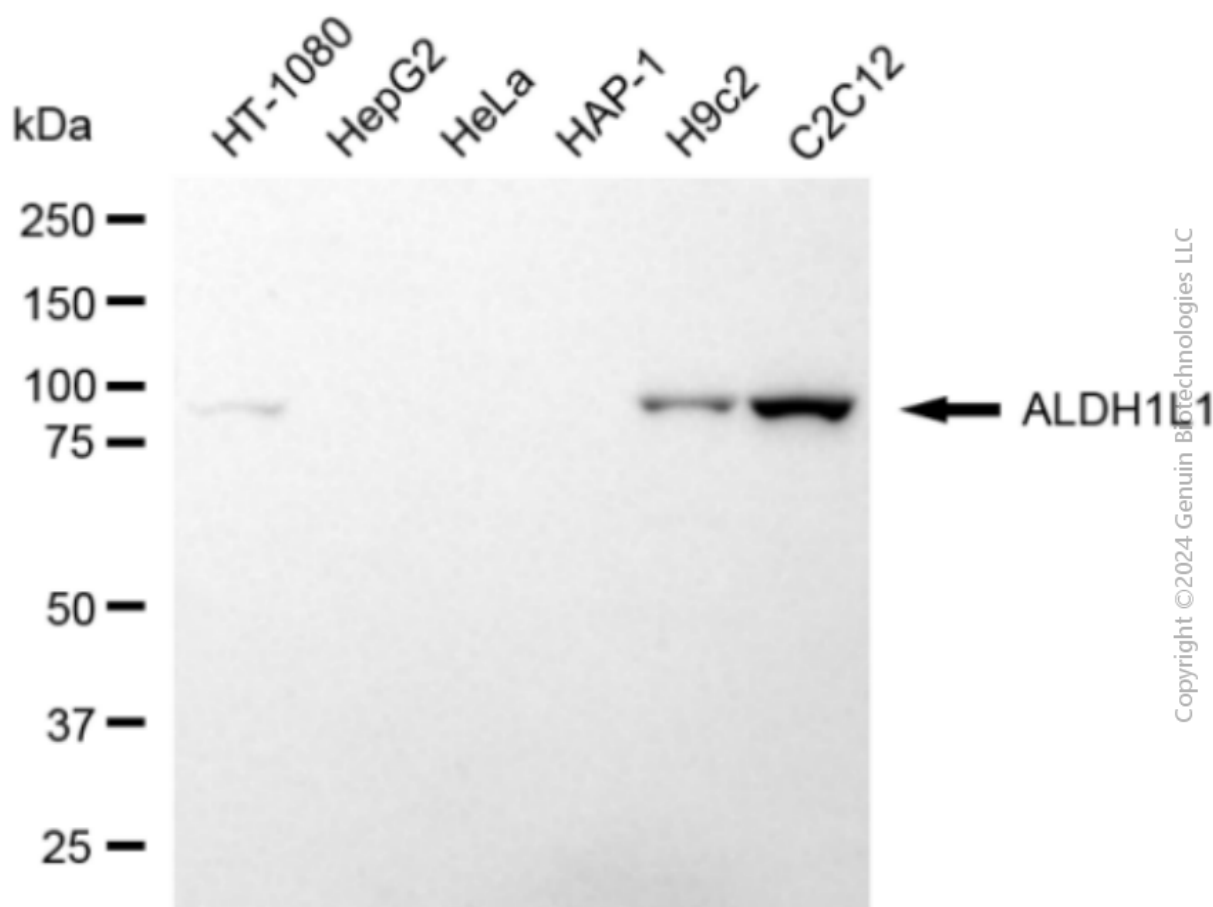
Store at -20 °C for one year.

Recommended Dilutions

Western Blotting (WB): 1:2,500-1:5,000

Note: This product is for research use only.

Validation Data



Western blotting analysis using anti-ALDH1L1 antibody (Cat#3506). Total cell lysates (30 μ g) from various cell lines were loaded and separated by SDS-PAGE. The blot was incubated with anti-ALDH1L1 antibody (Cat#3506, 1:5,000) and HRP-conjugated goat anti-mouse secondary antibody (Cat#101, 1:20,000) respectively. Image was developed using NaQ™ ECL Substrate Kit (Cat#716).

SUPPORT

SUPPORT@GENUINBIOTECH.COM
TEL: +1-540-855-7041

ORDERS

SALES@GENUINBIOTECH.COM
FAX: +1-540-855-7041

WWW.GENUINBIOTECH.COM