

Catalog #: 3515

Aliases

ANXA3; Annexin A3; ANX3; Inositol 1,2-Cyclic Phosphate 2-Phosphohydrolase; Placental Anticoagulant Protein III; 35-Alpha Calcimedlin; Lipocortin III; Annexin-3; PAP-III; Annexin III (Lipocortin III, 1,2-Cyclic-Inositol-Phosphate Phosphodiesterase, Placental Anticoagulant Protein III, Calcimedlin 35-Alpha); Annexin III (Lipocortin III); Calcimedlin 35-Alpha; Annexin III

Background

Gene Name: ANXA3

NCBI Gene Entry: [306](#)

UniProt Entry: [P12429](#)

Application Information

Molecular Weight: Predicted, 36 kDa; observed, 30 kDa

Clonality: Mouse monoclonal antibody

Clone ID: 24GB6300

Species Reactivity: Human, mouse

Applications Tested: Western blotting (WB), flow cytometry (FCM), immunocytochemistry (IC)

Immunogen

Recombinant protein of human ANXA3

Isotype

Mouse IgG1

Storage Buffer

Supplied in PBS (pH 7.4) containing 50% glycerol, and 0.02% sodium azide.

Storage

Store at -20 °C for one year.

Recommended Dilutions

Western Blotting (WB): 1:2,500-1:5,000

Flow Cytometry (FCM): 1:2,000

Immunocytochemistry (IC): 1:100-1:1,000

SUPPORT

SUPPORT@GENUINBIOTECH.COM
TEL: +1-540-855-7041

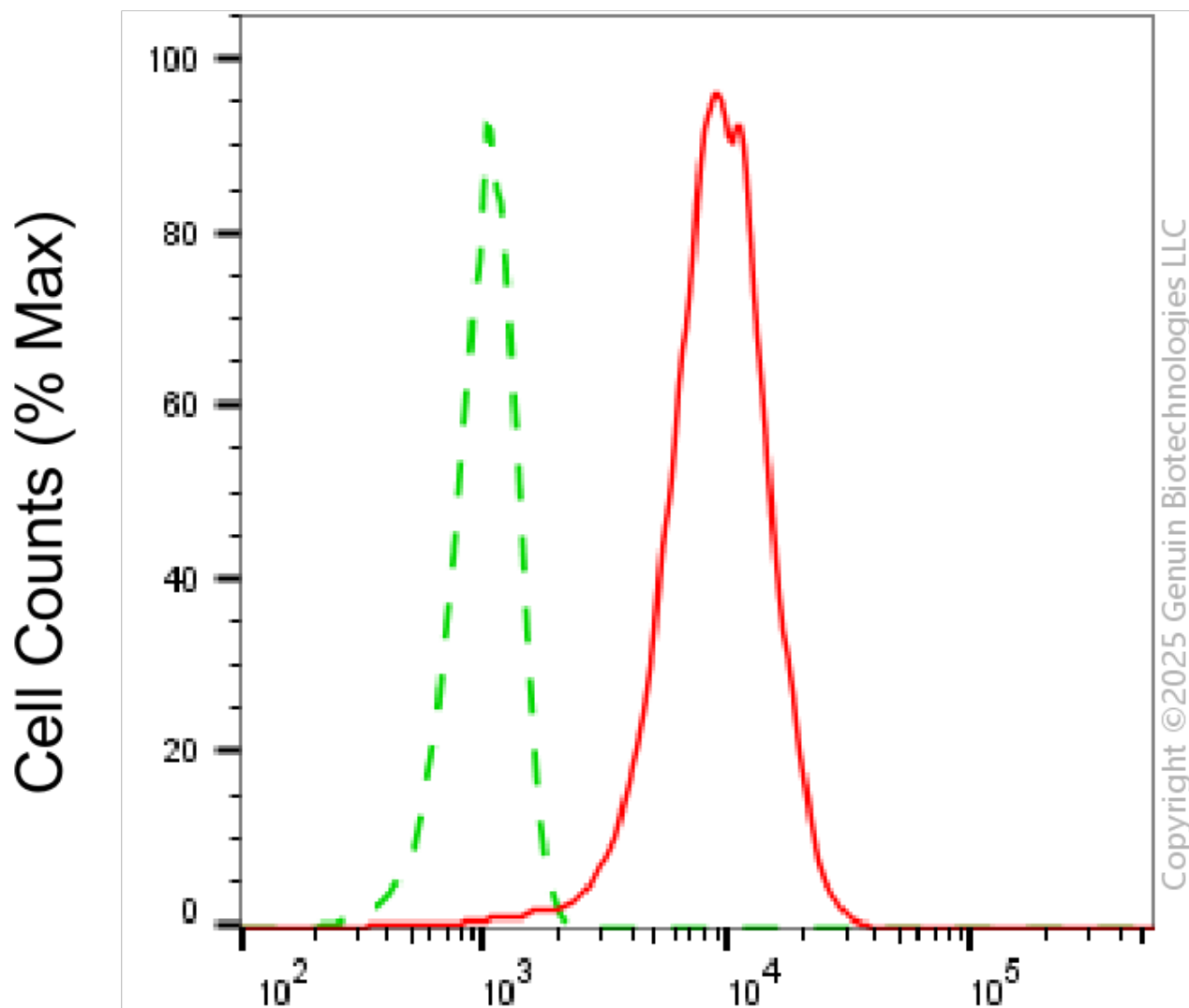
ORDERS

SALES@GENUINBIOTECH.COM
FAX: +1-540-855-7041

WWW.GENUINBIOTECH.COM

Note: This product is for research use only.

Validation Data



Annexin A3-Alexa Fluor® 647

Flow cytometric analysis of Annexin A3 expression in HepG2 cells using anti-Annexin A3 antibody (Cat#3515, 1:2,000). Green, isotype control; red, Annexin A3.

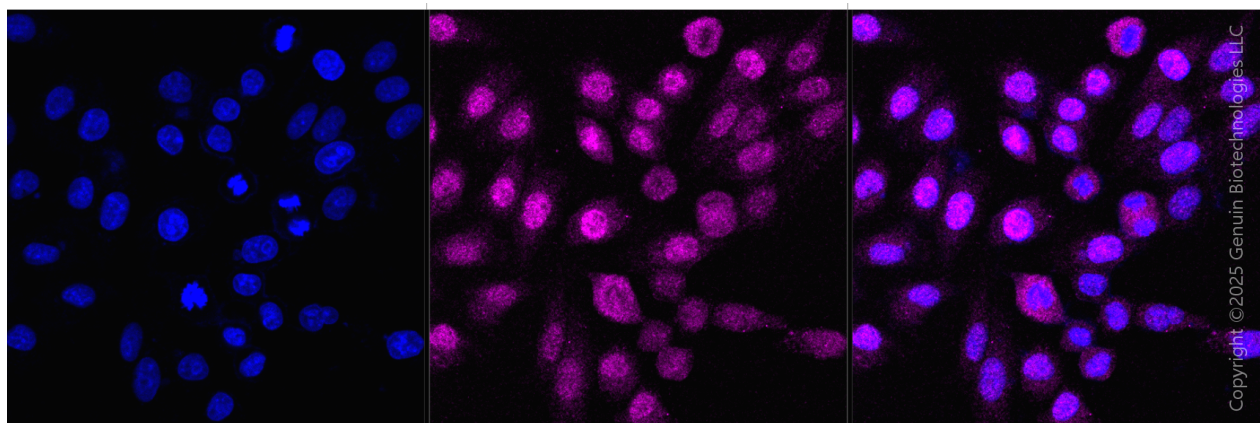
SUPPORT

SUPPORT@GENUINBIOTECH.COM
TEL: +1-540-855-7041

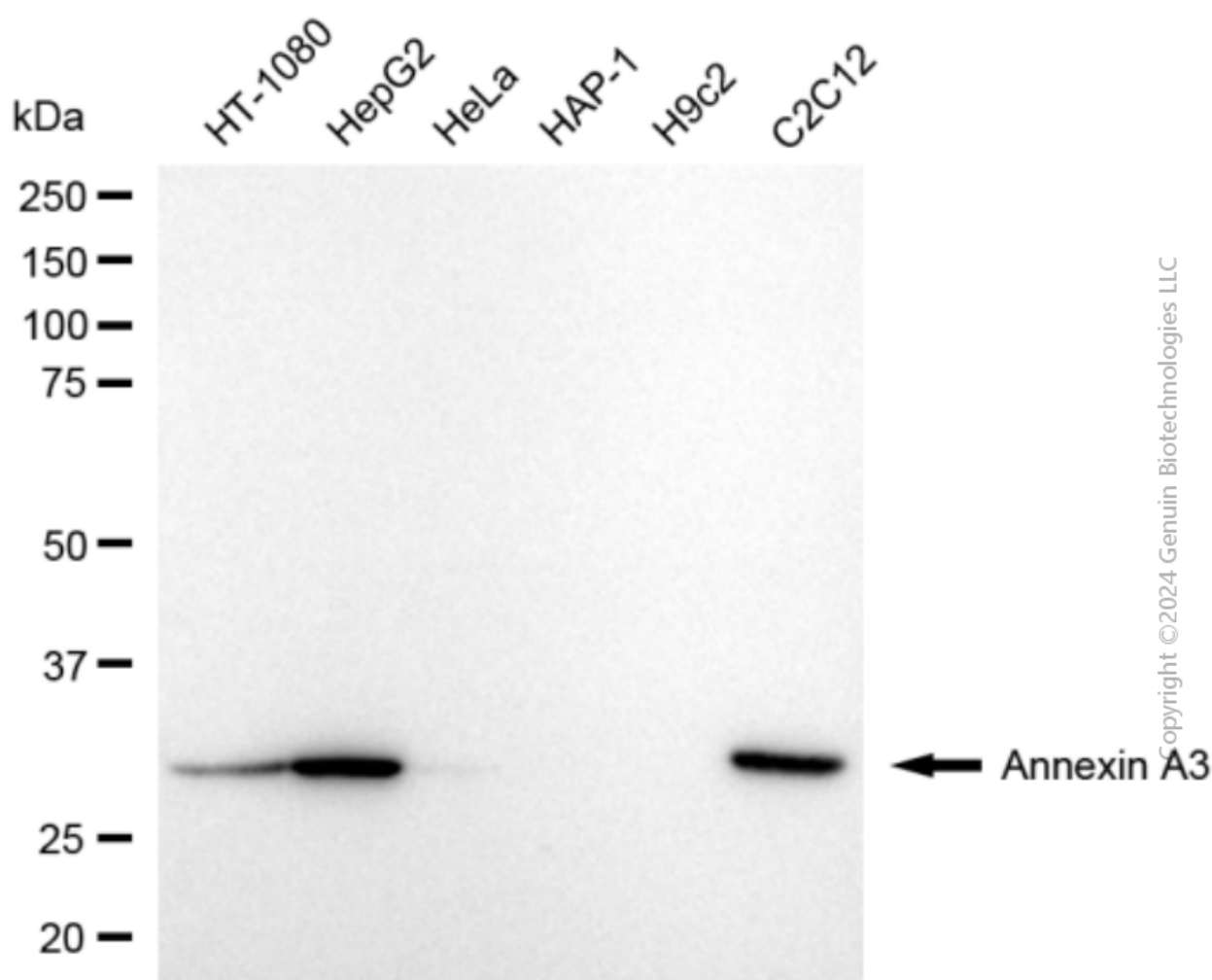
ORDERS

SALES@GENUINBIOTECH.COM
FAX: +1-540-855-7041

WWW.GENUINBIOTECH.COM



Immunocytochemical staining of HepG2 cells with anti-Annexin A3 antibody (Cat#3515, 1:1,000). Nuclei were stained blue with DAPI; Annexin A3 was stained magenta with Alexa Fluor® 647. Images were taken using Leica stellaris 5. Protein abundance based on laser Intensity and smart gain: Medium. Scale bar, 20 µm.



Western blotting analysis using anti-annexin A3 antibody (Cat#3515). Total cell lysates (30 µg)

SUPPORT

SUPPORT@GENUINBIOTECH.COM
TEL: +1-540-855-7041

ORDERS

SALES@GENUINBIOTECH.COM
FAX: +1-540-855-7041

WWW.GENUINBIOTECH.COM

from various cell lines were loaded and separated by SDS-PAGE. The blot was incubated with anti-annexin A3 antibody (Cat#3515, 1:5,000) and HRP-conjugated goat anti-mouse secondary antibody (Cat#101, 1:20,000) respectively. Image was developed using NaQ™ ECL Substrate Kit (Cat#716).