

Catalog #: 3528

Aliases

ANAPC2; Anaphase Promoting Complex Subunit 2; APC2; KIAA1406; Anaphase-Promoting Complex Subunit 2; Cyclosome Subunit 2

Background

Gene Name: ANAPC2

NCBI Gene Entry: [29882](#)

UniProt Entry: [Q9UJX6](#)

Application Information

Molecular Weight: Predicted, 94 kDa; observed, 100 kDa

Clonality: Mouse monoclonal antibody

Clone ID: 24GB6365

Species Reactivity: Human, mouse, rat

Applications Tested: Western blotting (WB), flow cytometry (FCM)

Immunogen

Recombinant protein of human ANAPC2

Isotype

Mouse IgG1

Storage Buffer

Supplied in PBS (pH 7.4) containing 50% glycerol, and 0.02% sodium azide.

Storage

Store at -20 °C for one year.

Recommended Dilutions

Western Blotting (WB): 1:2,500-1:5,000

Flow Cytometry (FCM): 1:2,000

Note: This product is for research use only.

Validation Data

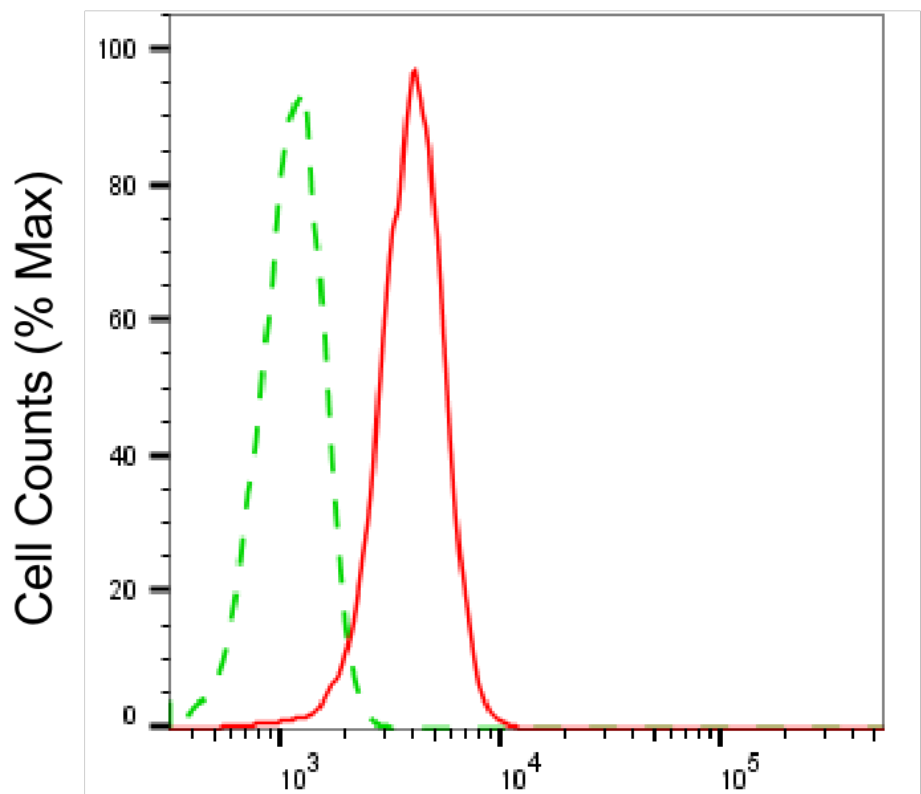
SUPPORT

SUPPORT@GENUINBIOTECH.COM
TEL: +1-540-855-7041

ORDERS

SALES@GENUINBIOTECH.COM
FAX: +1-540-855-7041

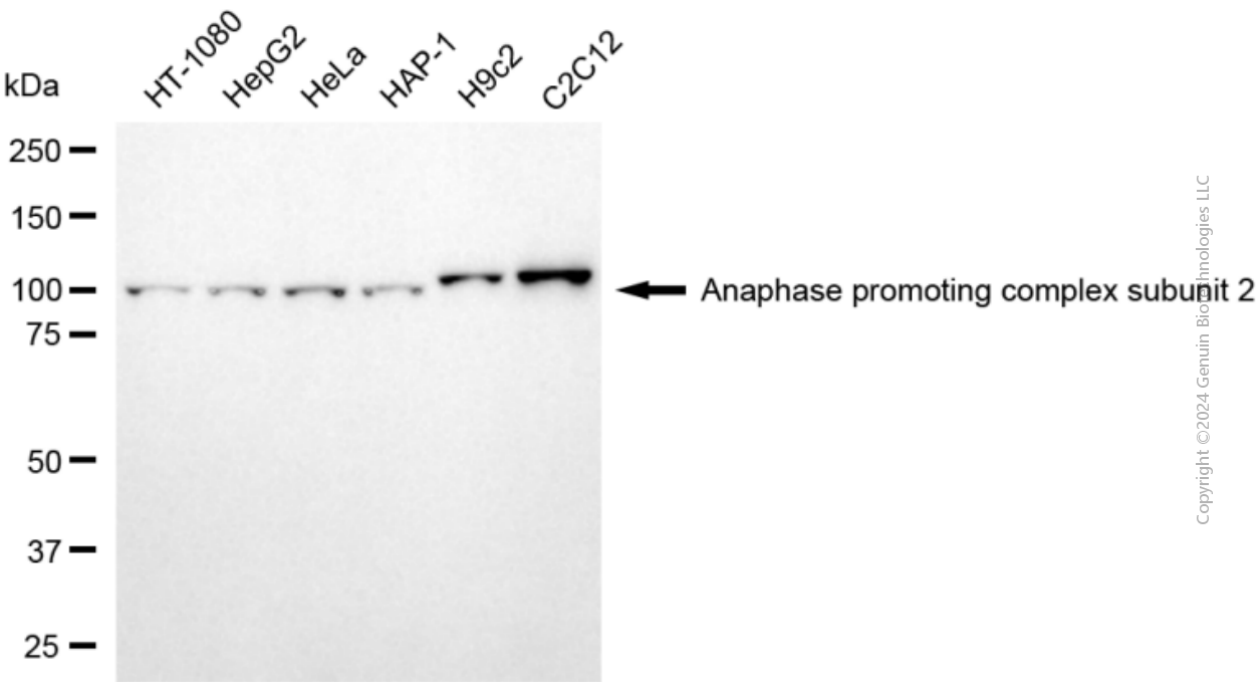
WWW.GENUINBIOTECH.COM



Copyright ©2025 Genuin Biotechnologies LLC

Anaphase promoting complex subunit 2-Alexa Fluor® 647

Flow cytometric analysis of Anaphase promoting complex subunit 2 expression in C2C12 cells using anti-Anaphase promoting complex subunit 2 antibody (Cat#3528, 1:2,000). Green, isotype control; red, Anaphase promoting complex subunit 2.



Copyright ©2024 Genuin Biotechnologies LLC

SUPPORT

SUPPORT@GENUINBIOTECH.COM
TEL: +1-540-855-7041

ORDERS

SALES@GENUINBIOTECH.COM
FAX: +1-540-855-7041

WWW.GENUINBIOTECH.COM

Western blotting analysis using anti-anaphase promoting complex subunit 2 antibody (Cat#3528). Total cell lysates (30 µg) from various cell lines were loaded and separated by SDS-PAGE. The blot was incubated with anti-anaphase promoting complex subunit 2 antibody (Cat#3528, 1:5,000) and HRP-conjugated goat anti-mouse secondary antibody (Cat#101, 1:20,000) respectively. Image was developed using NaQ™ ECL Substrate Kit (Cat#716).