

## Catalog #: 3546

### Aliases

APMAP; Adipocyte Plasma Membrane Associated Protein; C20orf3; BSCv; Adipocyte Plasma Membrane-Associated Protein; Protein BSCv; Chromosome 20 Open Reading Frame 3

### Background

Gene Name: APMAP

NCBI Gene Entry: [57136](#)

UniProt Entry: [Q9HDC9](#)

### Application Information

Molecular Weight: Predicted, 46 kDa; observed, 46 kDa

Clonality: Mouse monoclonal antibody

Clone ID: 24GB6450

Species Reactivity: Human, mouse, rat

Applications Tested: Western blotting (WB), flow cytometry (FCM)

### Immunogen

Recombinant protein of human C20orf3

### Isotype

Mouse IgG2b

### Storage Buffer

Supplied in PBS (pH 7.4) containing 50% glycerol, and 0.02% sodium azide.

### Storage

Store at -20 °C for one year.

### Recommended Dilutions

Western Blotting (WB): 1:2,500-1:5,000

Flow Cytometry (FCM): 1:2,000

**Note:** This product is for research use only.

### Validation Data

---

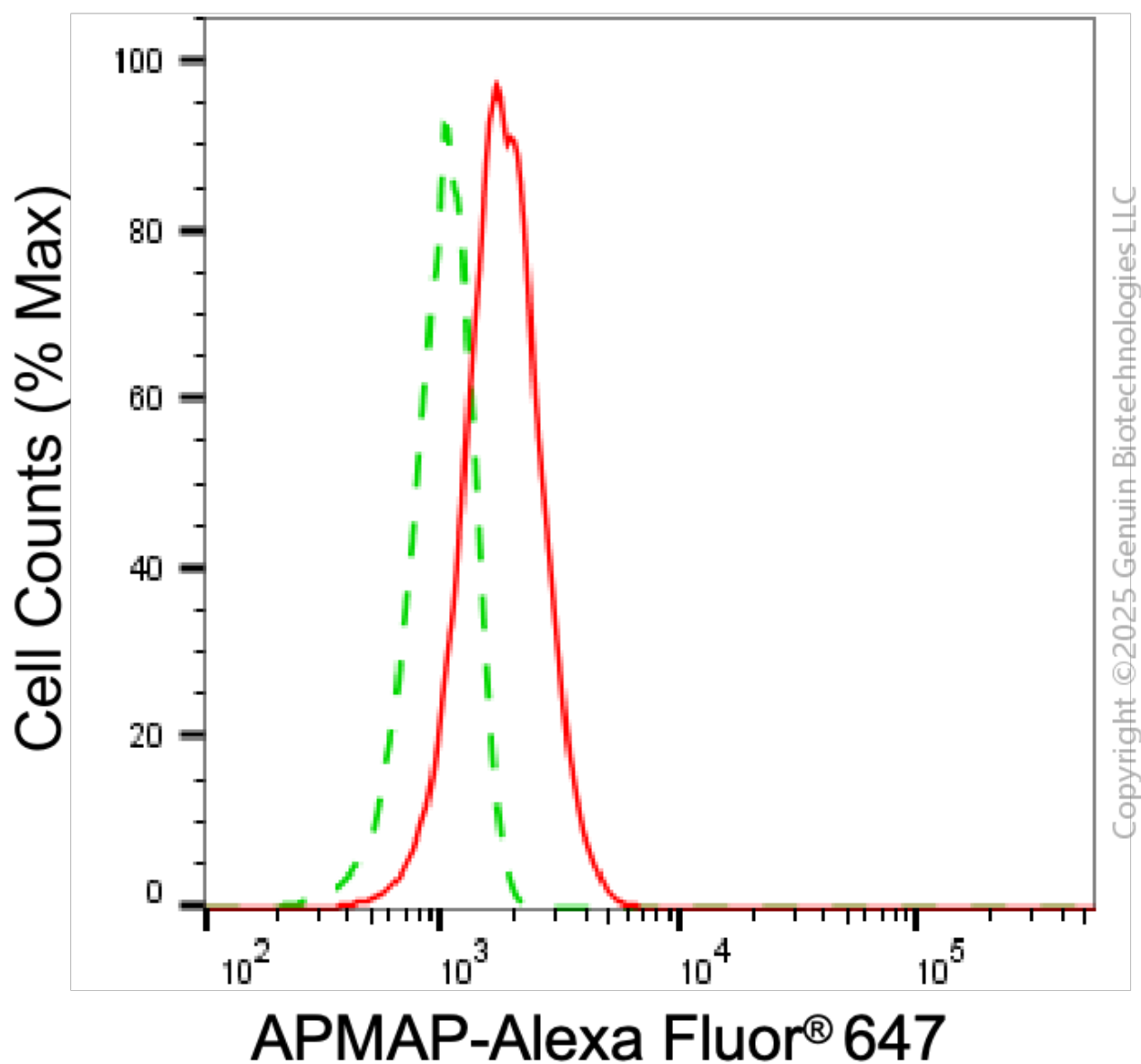
#### SUPPORT

SUPPORT@GENUINBIOTECH.COM  
TEL: +1-540-855-7041

#### ORDERS

SALES@GENUINBIOTECH.COM  
FAX: +1-540-855-7041

[WWW.GENUINBIOTECH.COM](http://WWW.GENUINBIOTECH.COM)



Flow cytometric analysis of APMAP expression in HepG2 cells using anti-APMAP antibody (Cat#3546, 1:2,000). Green, isotype control; red, APMAP.

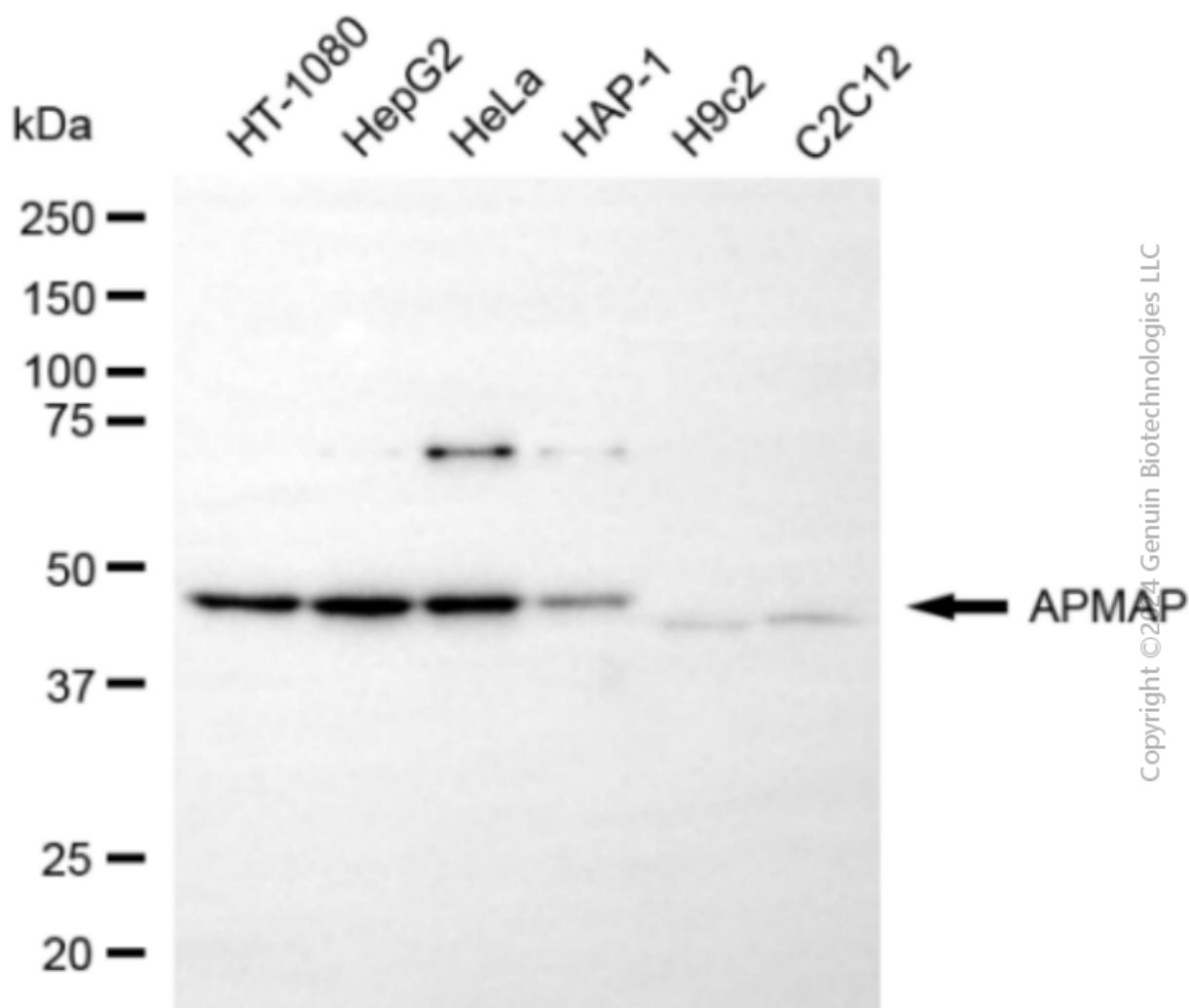
**SUPPORT**

SUPPORT@GENUINBIOTECH.COM  
TEL: +1-540-855-7041

**ORDERS**

SALES@GENUINBIOTECH.COM  
FAX: +1-540-855-7041

[WWW.GENUINBIOTECH.COM](http://WWW.GENUINBIOTECH.COM)



Western blotting analysis using anti-APMAP antibody (Cat#3546). Total cell lysates (30  $\mu$ g) from various cell lines were loaded and separated by SDS-PAGE. The blot was incubated with anti-APMAP antibody (Cat#3546, 1:5,000) and HRP-conjugated goat anti-mouse secondary antibody (Cat#101, 1:20,000) respectively. Image was developed using NaQ™ ECL Substrate Kit (Cat#716).

**SUPPORT**

SUPPORT@GENUINBIOTECH.COM  
TEL: +1-540-855-7041

**ORDERS**

SALES@GENUINBIOTECH.COM  
FAX: +1-540-855-7041

[WWW.GENUINBIOTECH.COM](http://WWW.GENUINBIOTECH.COM)