

# Anti-Mannose Phosphate Isomerase Mouse Monoclonal Antibody



**Catalog #: 3550**

## Aliases

MPI; Mannose Phosphate Isomerase; Mannose-6-Phosphate Isomerase; Phosphohexomutase; EC 5.3.1.8; PMI1; PMI; Phosphomannose Isomerase 1; Phosphomannose Isomerase; EC 5.3.1; CDG1B

## Background

Gene Name: MPI

NCBI Gene Entry: [4351](#)

UniProt Entry: [P34949](#)

## Application Information

Molecular Weight: Predicted, 47 kDa; observed, 40 kDa

Clonality: Mouse monoclonal antibody

Clone ID: 24GB6470

Species Reactivity: Human

Applications Tested: Western blotting (WB), flow cytometry (FCM)

## Immunogen

Recombinant protein of human MPI

## Isotype

Mouse IgG1

## Storage Buffer

Supplied in PBS (pH 7.4) containing 50% glycerol, and 0.02% sodium azide.

## Storage

Store at -20 °C for one year.

## Recommended Dilutions

Western Blotting (WB): 1:1,000-1:5,000

**Note:** This product is for research use only.

## Validation Data

---

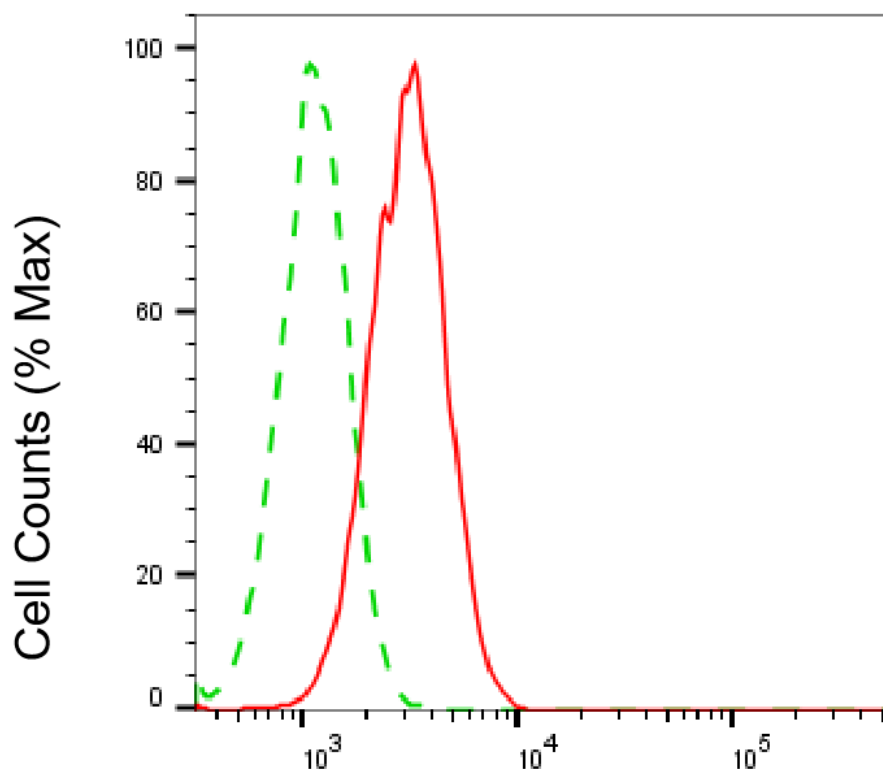
### SUPPORT

SUPPORT@GENUINBIOTECH.COM  
TEL: +1-540-855-7041

### ORDERS

SALES@GENUINBIOTECH.COM  
FAX: +1-540-855-7041

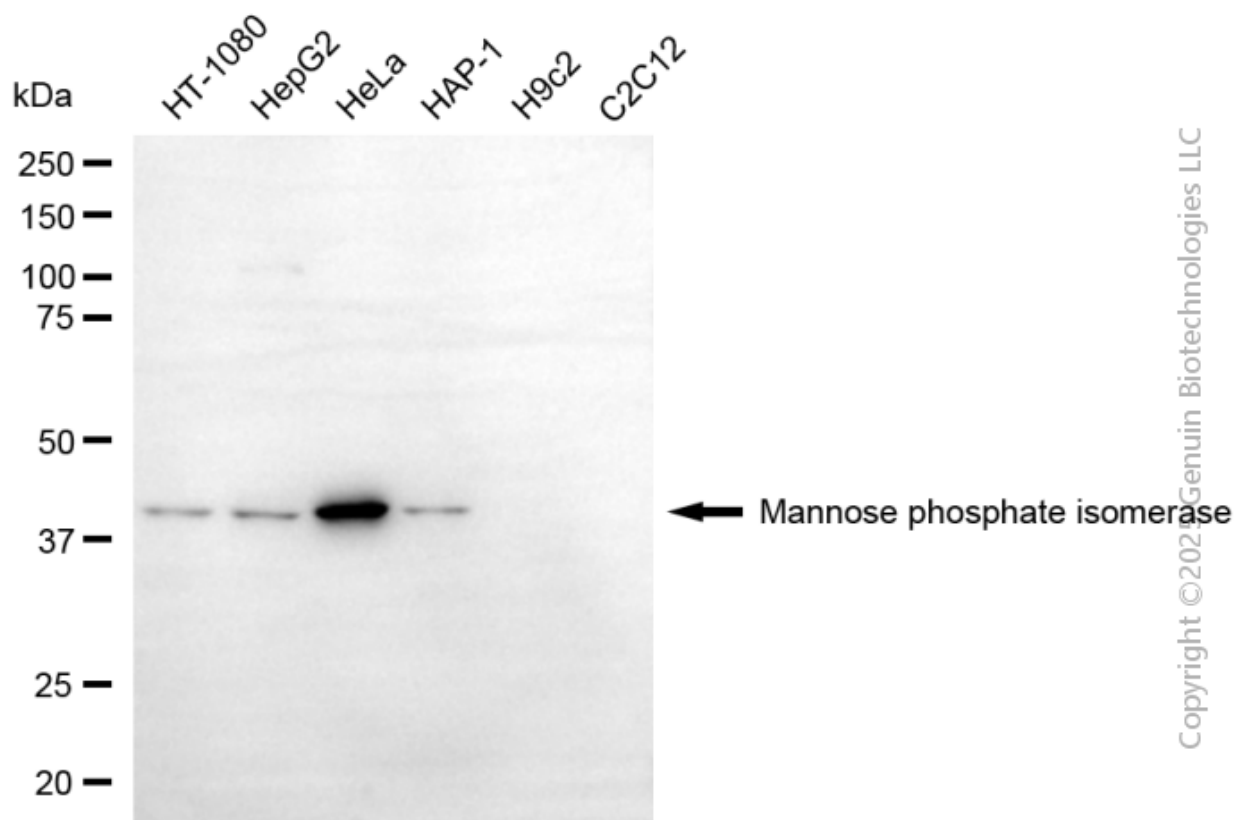
[WWW.GENUINBIOTECH.COM](http://WWW.GENUINBIOTECH.COM)



Copyright ©2025 Genuin Biotechnologies LLC

## Mannose phosphate isomerase-Alexa Fluor® 647

Flow cytometric analysis of Mannose phosphate isomerase expression in HeLa cells using anti-Mannose phosphate isomerase antibody (Cat#3550, 1:2,000). Green, isotype control; red, Mannose phosphate isomerase.



Western blotting analysis using anti-mannose phosphate isomerase antibody (Cat#3550). Total cell lysates (30  $\mu$ g) from various cell lines were loaded and separated by SDS-PAGE. The blot was incubated with anti-mannose phosphate isomerase antibody (Cat#3550, 1:5,000) and HRP-conjugated goat anti-mouse secondary antibody (Cat#101, 1:20,000) respectively. Image was developed using FeQTM ECL Substrate Kit (Cat#226).