

Catalog #: 3552

Aliases

COMMD1; Copper Metabolism Domain Containing 1; MURR1; C2orf5; Copper Metabolism (Murr1) Domain Containing 1; COMM Domain-Containing Protein 1; Copper Metabolism Gene MURR1; Protein Murr1; MGC27155; Chromosome 2 Open Reading Frame 5 (MURR1); COMM Domain Containing 1

Background

Gene Name: COMMD1

NCBI Gene Entry: [150684](#)

UniProt Entry: [Q8N668](#)

Application Information

Molecular Weight: Predicted, 21 kDa; observed, 18 kDa

Clonality: Mouse monoclonal antibody

Clone ID: 24GB6480

Species Reactivity: Human, mouse, rat

Applications Tested: Western blotting (WB), flow cytometry (FCM), immunocytochemistry (IC)

Immunogen

Recombinant protein of human COMMD1

Isotype

Mouse IgG2a

Storage Buffer

Supplied in PBS (pH 7.4) containing 50% glycerol, and 0.02% sodium azide.

Storage

Store at -20 °C for one year.

Recommended Dilutions

Western Blotting (WB): 1:2,500-1:5,000

Flow Cytometry (FCM): 1:2,000

Immunocytochemistry (IC): 1:100-1:1,000

SUPPORT

SUPPORT@GENUINBIOTECH.COM
TEL: +1-540-855-7041

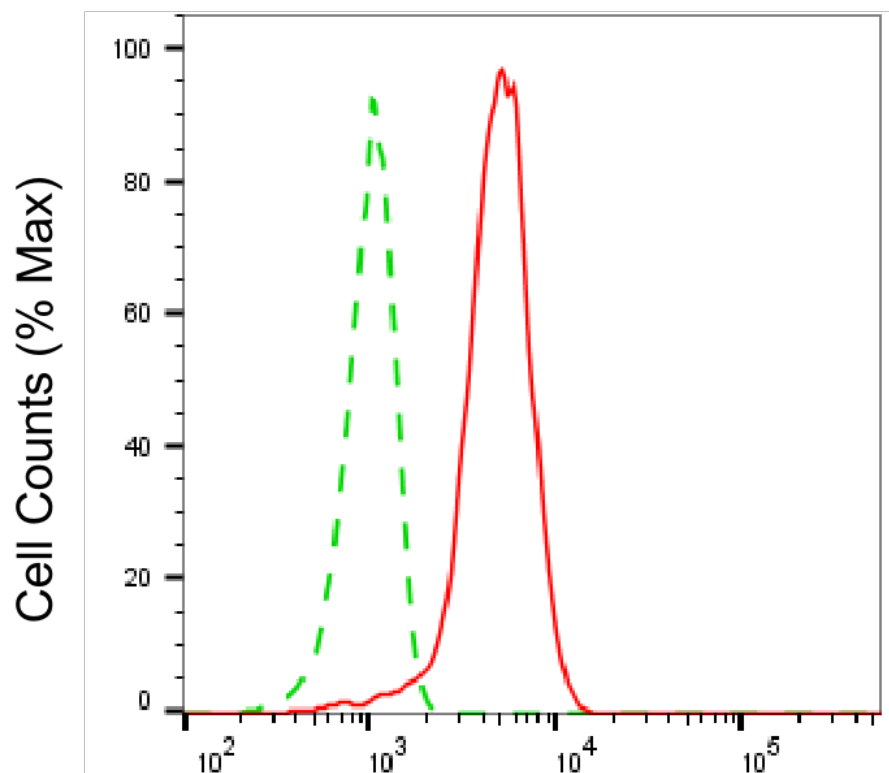
ORDERS

SALES@GENUINBIOTECH.COM
FAX: +1-540-855-7041

WWW.GENUINBIOTECH.COM

Note: This product is for research use only.

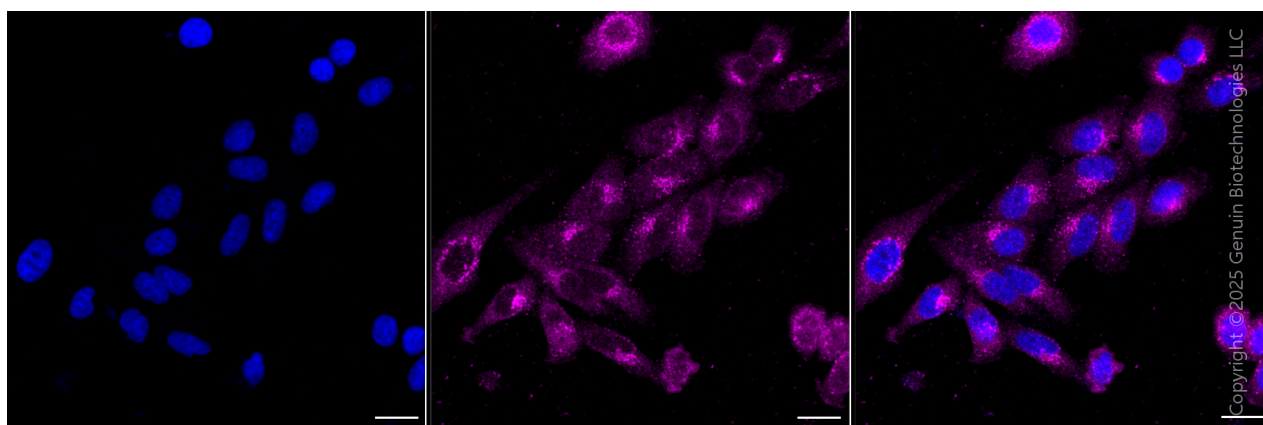
Validation Data



Copyright ©2025 Genuin Biotechnologies LLC

Copper metabolism domain containing 1-Alexa Fluor® 647

Flow cytometric analysis of Copper metabolism domain containing 1 expression in HepG2 cells using anti-Copper metabolism domain containing 1 antibody (Cat#3552, 1:2,000). Green, isotype control; red, Copper metabolism domain containing 1.



Copyright ©2025 Genuin Biotechnologies LLC

Immunocytochemical staining of HepG2 cells with anti-Copper metabolism domain containing 1 antibody (Cat#3552, 1:1,000). Nuclei were stained blue with DAPI; Copper metabolism domain

SUPPORT

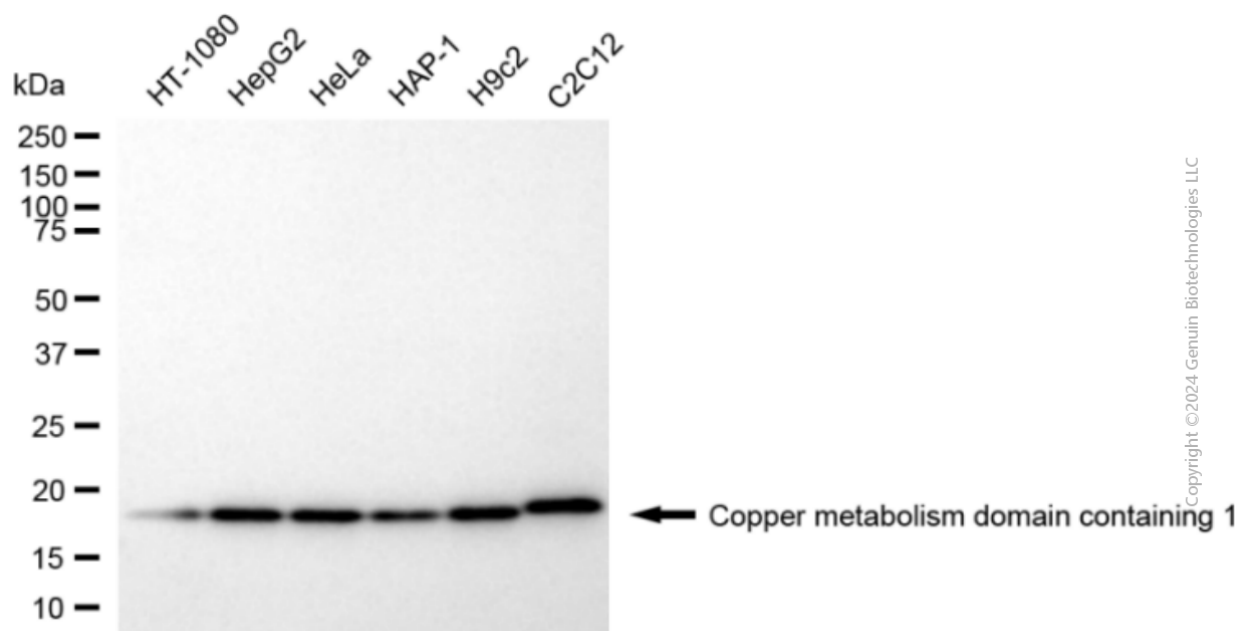
SUPPORT@GENUINBIOTECH.COM
TEL: +1-540-855-7041

ORDERS

SALES@GENUINBIOTECH.COM
FAX: +1-540-855-7041

WWW.GENUINBIOTECH.COM

containing 1 was stained magenta with Alexa Fluor® 647. Images were taken using Leica stellaris 5. Protein abundance based on laser Intensity and Smart Gain□Medium. Scale bar, 20 μm.



Western blotting analysis using anti-copper metabolism domain containing 1 antibody (Cat#3552). Total cell lysates (30 μg) from various cell lines were loaded and separated by SDS-PAGE. The blot was incubated with anti-copper metabolism domain containing 1 antibody (Cat#3552, 1:5,000) and HRP-conjugated goat anti-mouse secondary antibody (Cat#101, 1:20,000) respectively. Image was developed using NaQ™ ECL Substrate Kit (Cat#716).