

Catalog #: 3562

Aliases

TXNDC5; Thioredoxin Domain Containing 5; ERp46; EndoPDI; PDIA15; Hsc-2; Protein Disulfide Isomerase Family A, Member 15; Endoplasmic Reticulum Resident Protein 46; Thioredoxin Domain-Containing Protein 5; Thioredoxin-Like Protein P46; ER Protein 46; FLJ21353; FLJ90810; MGC3178; Thioredoxin Domain Containing 5 (Endoplasmic Reticulum); Epididymis Secretory Sperm Binding Protein; Endothelial Protein Disulphide Isomerase; Endoplasmic Reticulum Protein ERp46; Thioredoxin Related Protein; EC 1.8.4.-; EC 5.3.4.1; UNQ364; STRF8; TLP46; HCC2

Background

Gene Name: TXNDC5

NCBI Gene Entry: [81567](#)

UniProt Entry: [Q8NBS9](#)

Application Information

Molecular Weight: Predicted, 48 kDa; observed, 48 kDa

Clonality: Mouse monoclonal antibody

Clone ID: 24GB6530

Species Reactivity: Human

Applications Tested: Western blotting (WB), flow cytometry (FCM), immunocytochemistry (IC)

Immunogen

Recombinant protein of human TXNDC5

Isotype

Mouse IgG1

Storage Buffer

Supplied in PBS (pH 7.4) containing 50% glycerol, and 0.02% sodium azide.

Storage

Store at -20 °C for one year.

Recommended Dilutions

Western Blotting (WB): 1:2,500-1:5,000

Flow Cytometry (FCM): 1:2,000

SUPPORT

SUPPORT@GENUINBIOTECH.COM
TEL: +1-540-855-7041

ORDERS

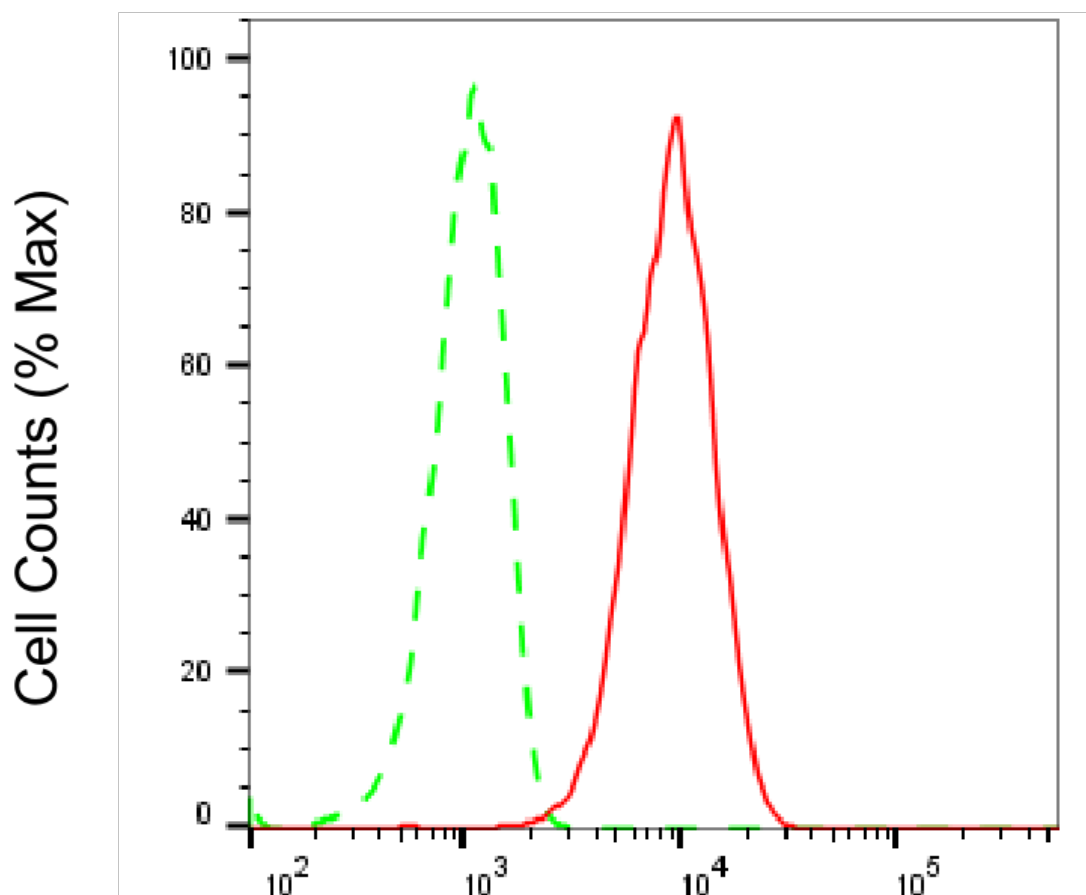
SALES@GENUINBIOTECH.COM
FAX: +1-540-855-7041

WWW.GENUINBIOTECH.COM

Immunocytochemistry (IC): 1:100-1:1,000

Note: This product is for research use only.

Validation Data



Copyright ©2025 Genuin Biotechnologies LLC

Thioredoxin domain containing 5-Alexa Fluor® 647

Flow cytometric analysis of Thioredoxin domain containing 5 expression in HT-1080 cells using anti-Thioredoxin domain containing 5 antibody (Cat#3562, 1:2,000). Green, isotype control; red, Thioredoxin domain containing 5.

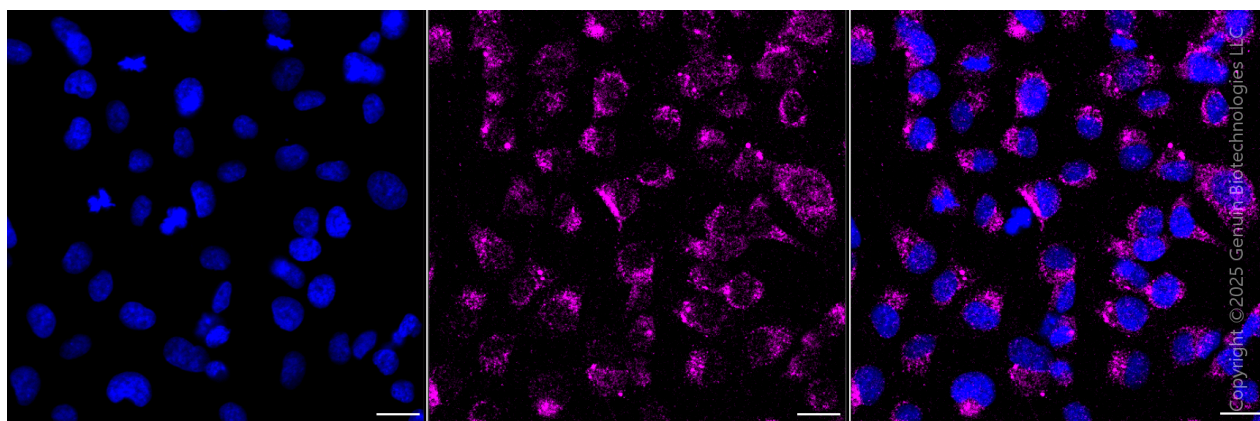
SUPPORT

SUPPORT@GENUINBIOTECH.COM
TEL: +1-540-855-7041

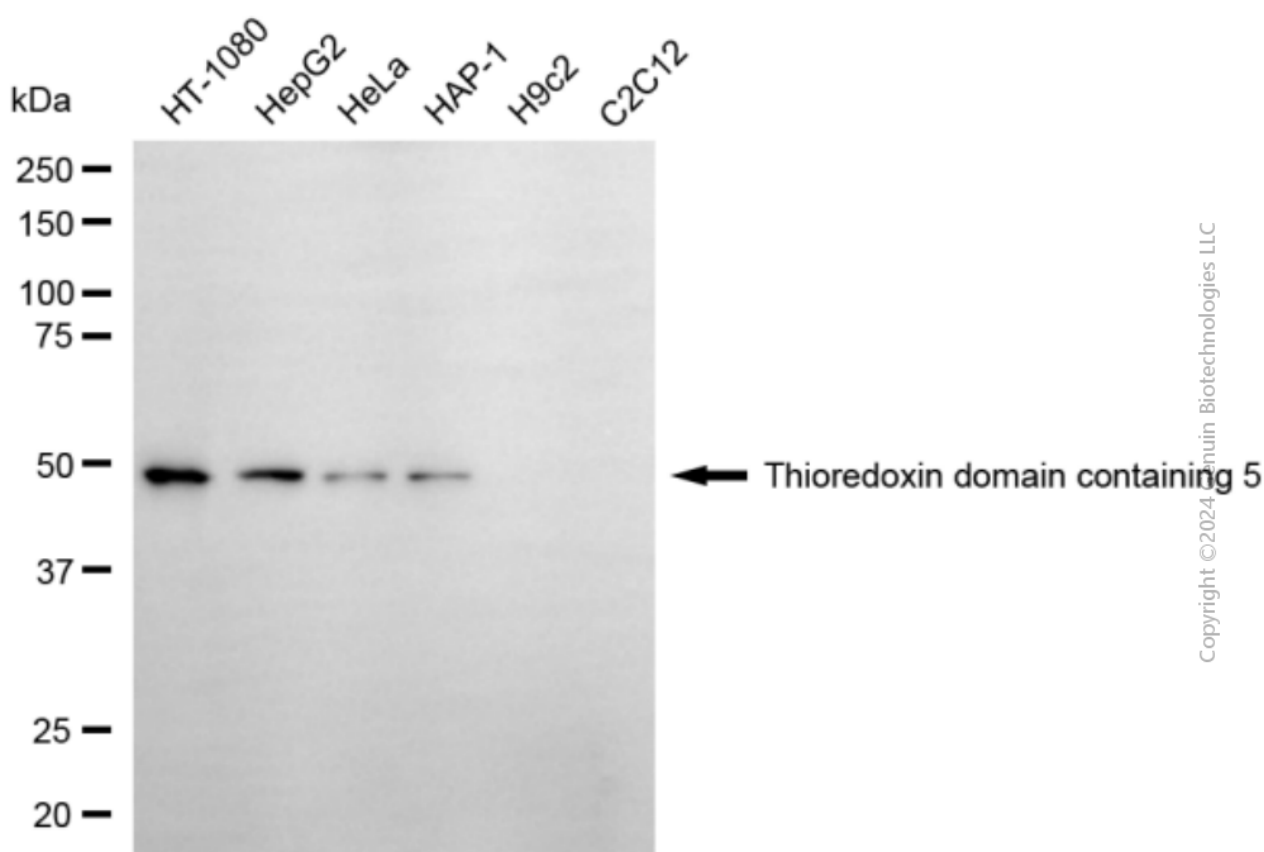
ORDERS

SALES@GENUINBIOTECH.COM
FAX: +1-540-855-7041

WWW.GENUINBIOTECH.COM



Immunocytochemical staining of HT-1080 cells with Thioredoxin domain containing 5 antibody (Cat#3562, 1:1,000). Nuclei were stained blue with DAPI; Thioredoxin domain containing 5 was stained magenta with Alexa Fluor® 647. Images were taken using Leica stellaris 5. Protein abundance based on laser Intensity and smart gain: . Scale bar, 20 μ m.



Western blotting analysis using anti-thioredoxin domain containing 5 antibody (Cat#3562). Total cell lysates (30 μ g) from various cell lines were loaded and separated by SDS-PAGE. The blot was incubated with anti-thioredoxin domain containing 5 antibody (Cat#3562, 1:5,000) and HRP-conjugated goat anti-mouse secondary antibody (Cat#101, 1:20,000) respectively. Image was developed using FeQ™ ECL Substrate Kit (Cat#226).

SUPPORT

SUPPORT@GENUINBIOTECH.COM
TEL: +1-540-855-7041

ORDERS

SALES@GENUINBIOTECH.COM
FAX: +1-540-855-7041

WWW.GENUINBIOTECH.COM

SUPPORT

SUPPORT@GENUINBIOTECH.COM
TEL: +1-540-855-7041

ORDERS

SALES@GENUINBIOTECH.COM
FAX:+1-540-855-7041

WWW.GENUINBIOTECH.COM