

## Catalog #: 3572

### Aliases

RAD23B; RAD23 Homolog B, Nucleotide Excision Repair Protein; HHR23B; HR23B; P58; XP-C Repair-Complementing Complex 58 KDa Protein; UV Excision Repair Protein RAD23 Homolog B; XP-C Repair Complementing Complex 58 KDa; XP-C Repair Complementing Protein; RAD23 (S. Cerevisiae) Homolog B; RAD23 Homolog B (S. Cerevisiae); RAD23, Yeast Homolog Of, B

### Background

Gene Name: RAD23B

NCBI Gene Entry: [5887](#)

UniProt Entry: [P54727](#)

### Application Information

Molecular Weight: Predicted, 43 kDa; observed, 53 kDa

Clonality: Mouse monoclonal antibody

Clone ID: 24GB6580

Species Reactivity: Human, mouse, rat

Applications Tested: Western blotting (WB), flow cytometry (FCM)

### Immunogen

Recombinant protein of human RAD23B

### Isotype

Mouse IgG2b

### Storage Buffer

Supplied in PBS (pH 7.4) containing 50% glycerol, and 0.02% sodium azide.

### Storage

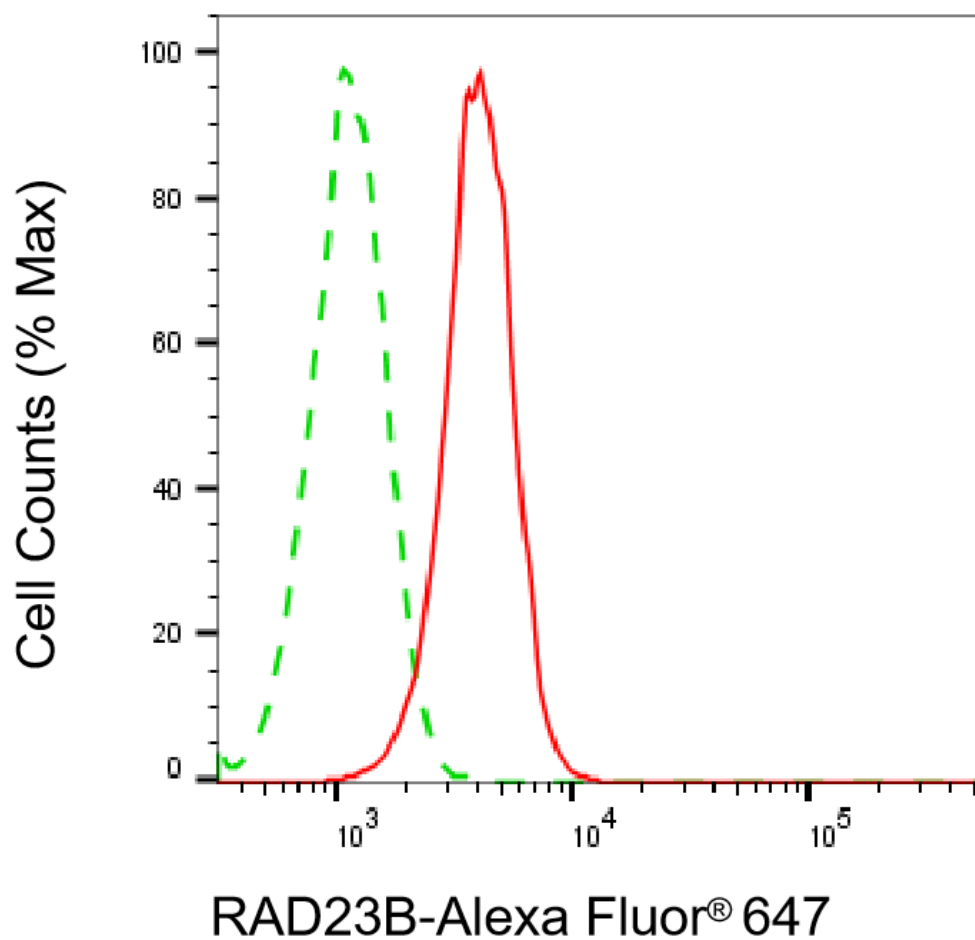
Store at -20 °C for one year.

### Recommended Dilutions

Western Blotting (WB): 1:1,000-1:5,000

**Note:** This product is for research use only.

## Validation Data



Copyright ©2025 Genuin Biotechnologies LLC

Flow cytometric analysis of RAD23B expression in HeLa cells using anti-RAD23B antibody (Cat#3572, 1:2,000). Green, isotype control; red, RAD23B.

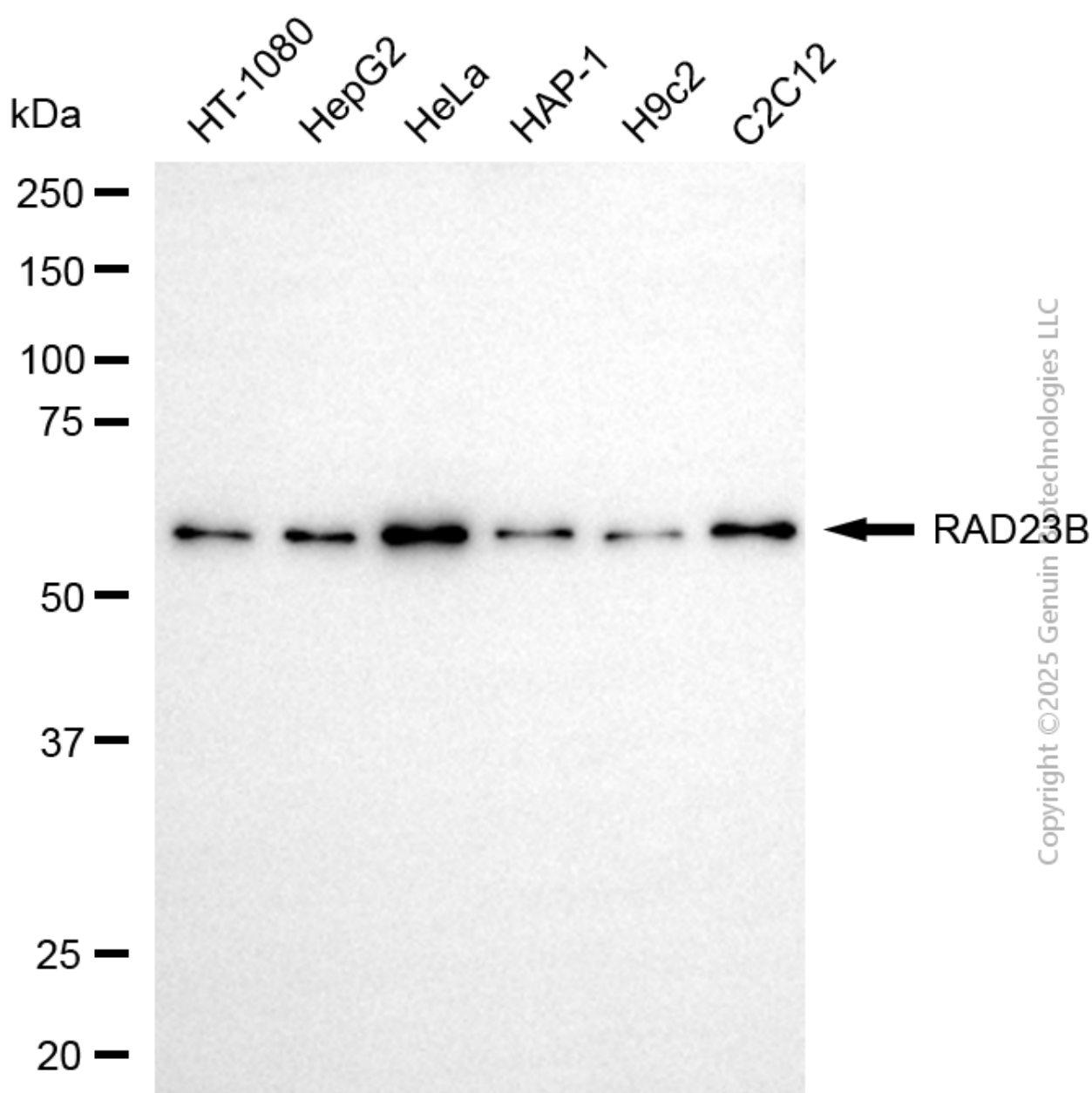
## SUPPORT

SUPPORT@GENUINBIOTECH.COM  
TEL: +1-540-855-7041

## ORDERS

SALES@GENUINBIOTECH.COM  
FAX: +1-540-855-7041

[WWW.GENUINBIOTECH.COM](http://WWW.GENUINBIOTECH.COM)



Western blotting analysis using anti-RAD23B antibody (Cat#3572). Total cell lysates (30  $\mu$ g) from various cell lines were loaded and separated by SDS-PAGE. The blot was incubated with anti-RAD23B antibody (Cat#3572, 1:5,000) and HRP-conjugated goat anti-mouse secondary antibody (Cat#101, 1:20,000) respectively. Image was developed using NaQ™ ECL Substrate Kit (Cat#716).

**SUPPORT**

SUPPORT@GENUINBIOTECH.COM  
TEL: +1-540-855-7041

**ORDERS**

SALES@GENUINBIOTECH.COM  
FAX: +1-540-855-7041

[WWW.GENUINBIOTECH.COM](http://WWW.GENUINBIOTECH.COM)