

Anti-Estrogen Receptor 1 Mouse Monoclonal Antibody



Catalog #: 3579

Aliases

ESR1; Estrogen Receptor 1; ER-Alpha; NR3A1; Nuclear Receptor Subfamily 3 Group A Member 1; Estradiol Receptor; Era; ESR; ER; Oestrogen Receptor Alpha; E2 Receptor Alpha; Estrogen Receptor; Estrogen Receptor Alpha E1-N2-E2-1-2; Estrogen Receptor Alpha E1-E2-1-2; Estrogen Nuclear Receptor Alpha; Estrogen Receptor Alpha; ESTRR; ESRA

Background

Gene Name: ESR1

NCBI Gene Entry: [2099](#)

UniProt Entry: [P03372](#)

Application Information

Molecular Weight: Predicted, 66 kDa; observed, 74 kDa

Clonality: Mouse monoclonal antibody

Clone ID: 24GB6615

Species Reactivity: Human, mouse, rat

Applications Tested: Western blotting (WB), flow cytometry (FCM)

Immunogen

Recombinant protein of human ESR1

Isotype

Mouse IgG2a

Storage Buffer

Supplied in PBS (pH 7.4) containing 50% glycerol, and 0.02% sodium azide.

Storage

Store at -20 °C for one year.

Recommended Dilutions

Western Blotting (WB): 1:2,500-1:5,000

Flow Cytometry (FCM): 1:2,000

Note: This product is for research use only.

SUPPORT

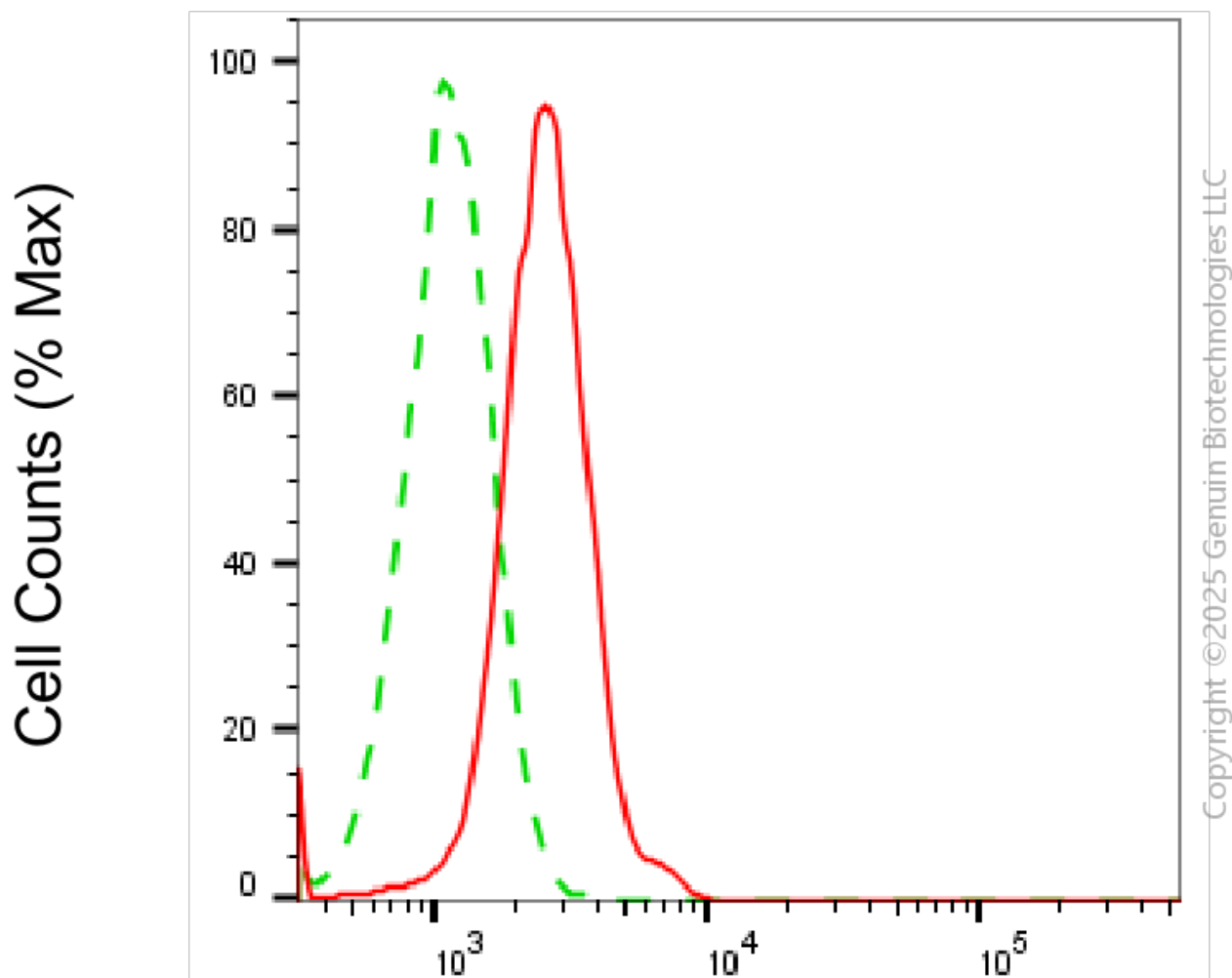
SUPPORT@GENUINBIOTECH.COM
TEL: +1-540-855-7041

ORDERS

SALES@GENUINBIOTECH.COM
FAX: +1-540-855-7041

WWW.GENUINBIOTECH.COM

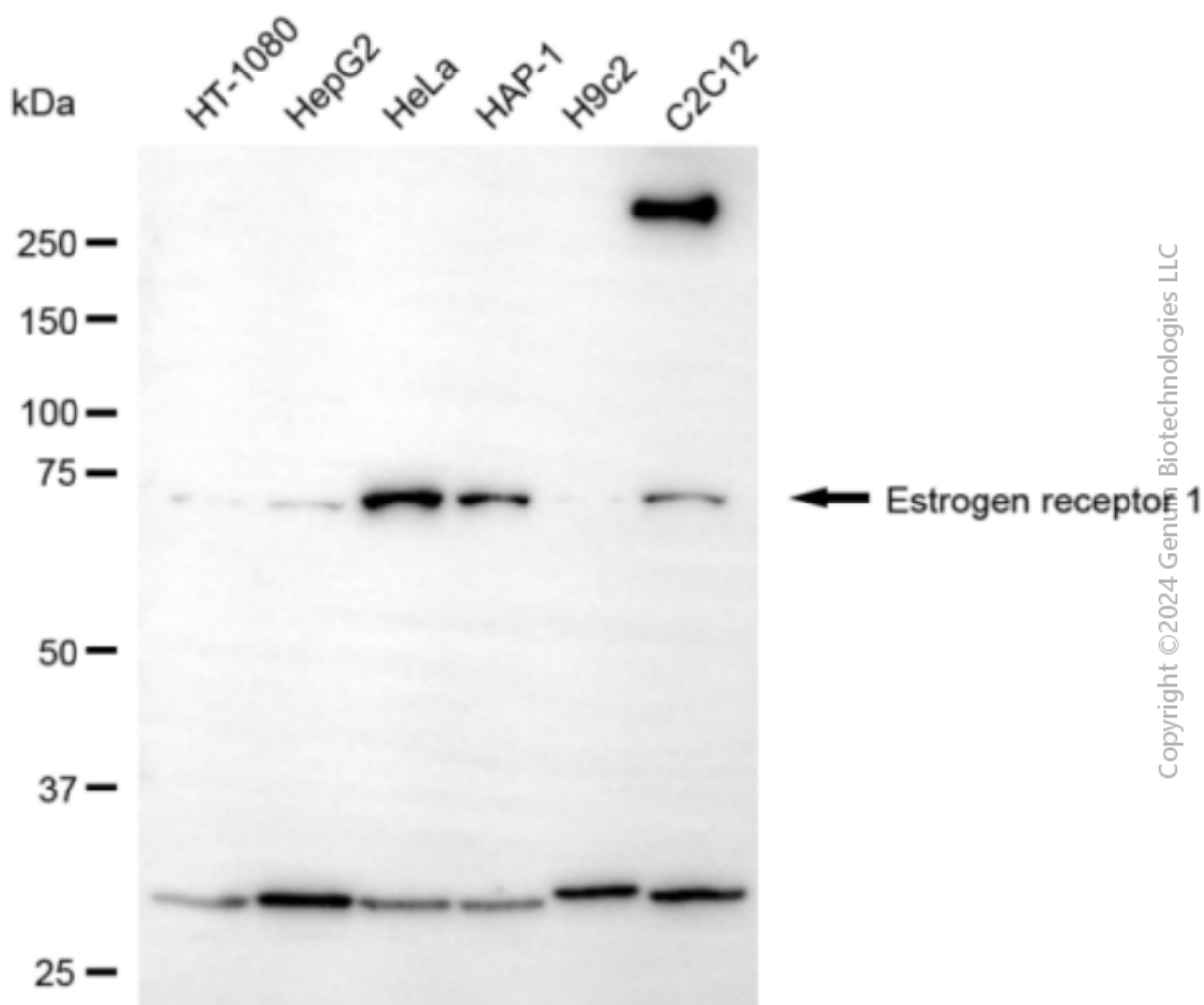
Validation Data



Copyright ©2025 Genuin Biotechnologies LLC

Estrogen receptor 1-Alexa Fluor® 647

Flow cytometric analysis of Estrogen receptor 1 expression in HeLa cells using anti-Estrogen receptor 1 antibody (Cat#3579, 1:2,000). Green, isotype control; red, Estrogen receptor 1.



Copyright ©2024 Genuin Biotechnologies LLC

Western blotting analysis using anti-estrogen receptor 1 antibody (Cat#3579). Total cell lysates (30 µg) from various cell lines were loaded and separated by SDS-PAGE. The blot was incubated with anti-estrogen receptor 1 antibody (Cat#3579, 1:5,000) and HRP-conjugated goat anti-mouse secondary antibody (Cat#101, 1:20,000) respectively. Image was developed using FeQ™ ECL Substrate Kit (Cat#226).