

Catalog #: 3582

Aliases

DNAJB6; DnaJ Heat Shock Protein Family (Hsp40) Member B6; MRJ; DnaJ (Hsp40) Homolog, Subfamily B, Member 6; DnaJ Homolog Subfamily B Member 6; Heat Shock Protein J2; LGMD1D; HHDJ1; HSJ-2; MSJ-1; HSJ2; Limb Girdle Muscular Dystrophy 1D (Autosomal Dominant); DnaJ-Like 2 Protein; LGMD1E; LGMDD1; DnaJ; MSJ1; DJ4

Background

Gene Name: DNAJB6

NCBI Gene Entry: [10049](#)

UniProt Entry: [O75190](#)

Application Information

Molecular Weight: Predicted, 36 kDa; observed, 37 kDa

Clonality: Mouse monoclonal antibody

Clone ID: 24GB6630

Species Reactivity: Human

Applications Tested: Western blotting (WB), flow cytometry (FCM)

Immunogen

Recombinant protein of human DNAJB6

Isotype

Mouse IgG2b

Storage Buffer

Supplied in PBS (pH 7.4) containing 50% glycerol, and 0.02% sodium azide.

Storage

Store at -20 °C for one year.

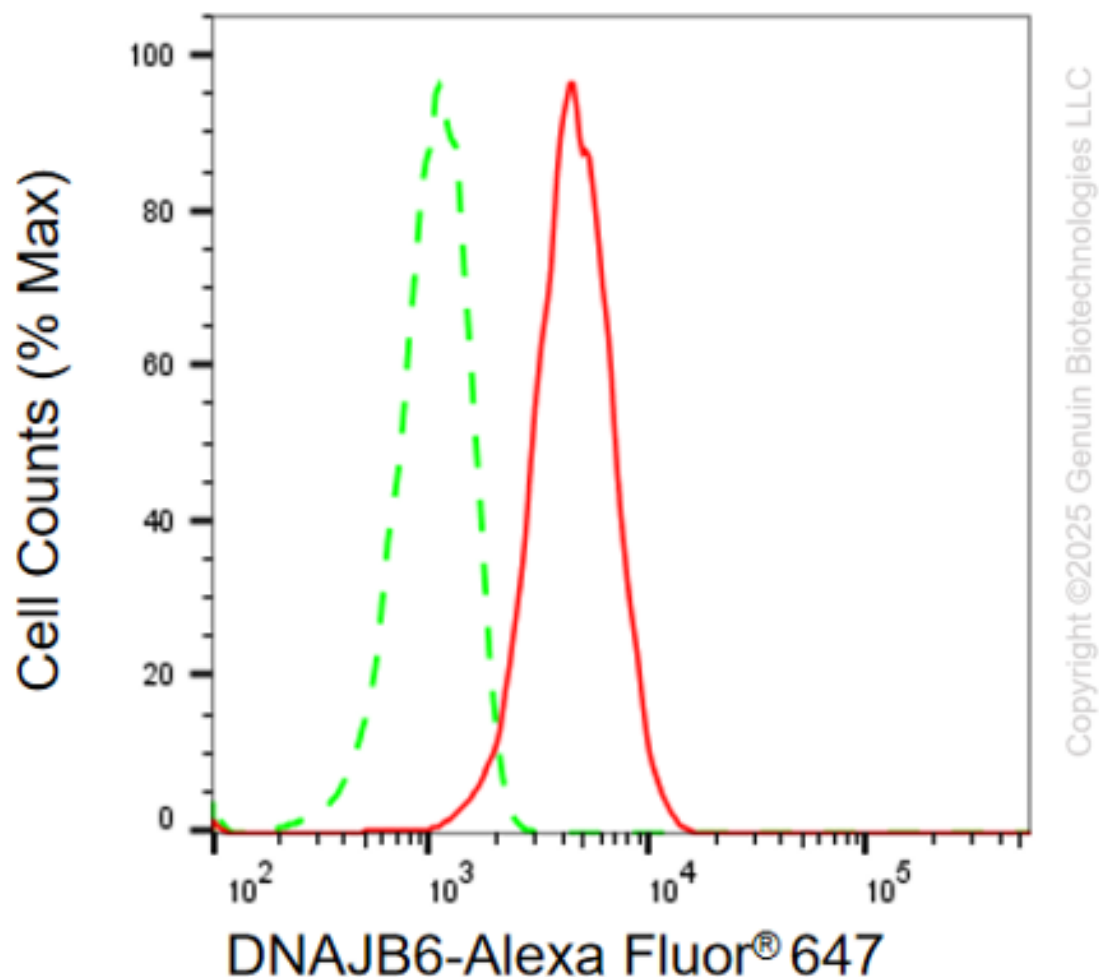
Recommended Dilutions

Western Blotting (WB): 1:1,000-1:5,000

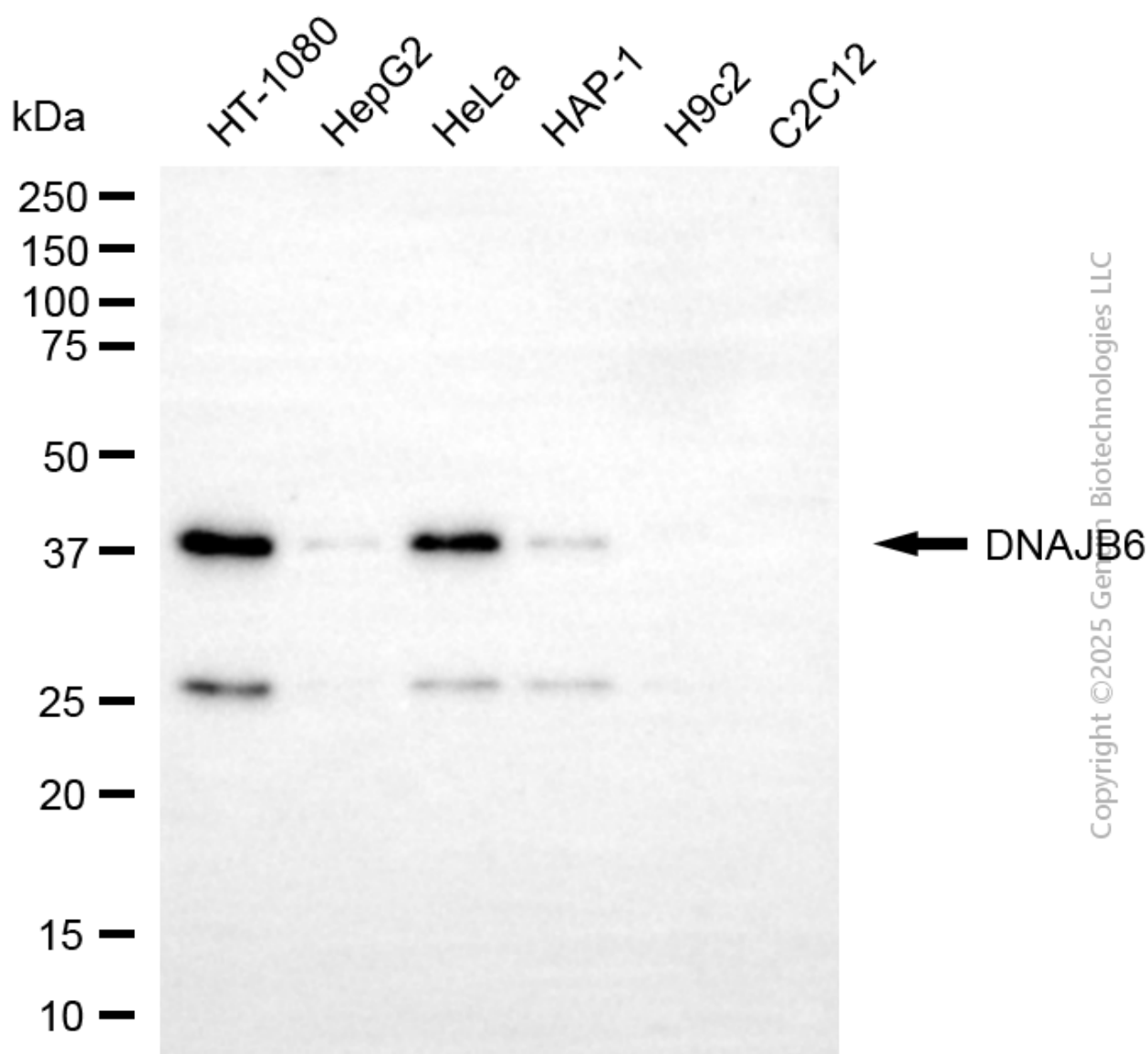
Flow Cytometry (FCM) : 1:2,000

Note: This product is for research use only.

Validation Data



Flow cytometric analysis of DNAJB6 expression in HT-1080 cells using anti-DNAJB6 antibody (Cat#3582, 1:2,000). Green, isotype control; red, DNAJB6.



Western blotting analysis using anti-DNAJB6 antibody (Cat#3582). Total cell lysates (30 μ g) from various cell lines were loaded and separated by SDS-PAGE. The blot was incubated with anti-DNAJB6 antibody (Cat#3582, 1:5,000) and HRP-conjugated goat anti-mouse secondary antibody (Cat#101, 1:20,000) respectively. Image was developed using FeQ™ ECL Substrate Kit (Cat#226).

SUPPORT

SUPPORT@GENUINBIOTECH.COM
TEL: +1-540-855-7041

ORDERS

SALES@GENUINBIOTECH.COM
FAX: +1-540-855-7041

WWW.GENUINBIOTECH.COM