

## Catalog #: 3588

### Aliases

ALDH4A1; Aldehyde Dehydrogenase 4 Family Member A1; L-Glutamate Gamma-Semialdehyde Dehydrogenase; P5CDh; ALDH4; Delta-1-Pyrroline-5-Carboxylate Dehydrogenase, Mitochondrial; Aldehyde Dehydrogenase Family 4 Member A1; P5C Dehydrogenase; Mitochondrial Delta-1-Pyrroline 5-Carboxylate Dehydrogenase; Delta-1-Pyrroline-5-Carboxylate Dehydrogenase; Aldehyde Dehydrogenase 4 Family, Member A1; Epididymis Secretory Sperm Binding Protein; EC 1.2.1.88; EC 1.5.1.12; P5CDH; P5CD

### Background

Gene Name: ALDH4A1

NCBI Gene Entry: [8659](#)

UniProt Entry: [P30038](#)

### Application Information

Molecular Weight: Predicted, 62 kDa; observed, 62 kDa

Clonality: Mouse monoclonal antibody

Clone ID: 24GB6660

Species Reactivity: Human, rat

Applications Tested: Western blotting (WB)

### Immunogen

Recombinant protein of human ALDH4A1

### Isotype

Mouse IgG1

### Storage Buffer

Supplied in PBS (pH 7.4) containing 50% glycerol, and 0.02% sodium azide.

### Storage

Store at -20 °C for one year.

### Recommended Dilutions

Western Blotting (WB): 1:1,000-1:2,500

---

#### SUPPORT

SUPPORT@GENUINBIOTECH.COM  
TEL: +1-540-855-7041

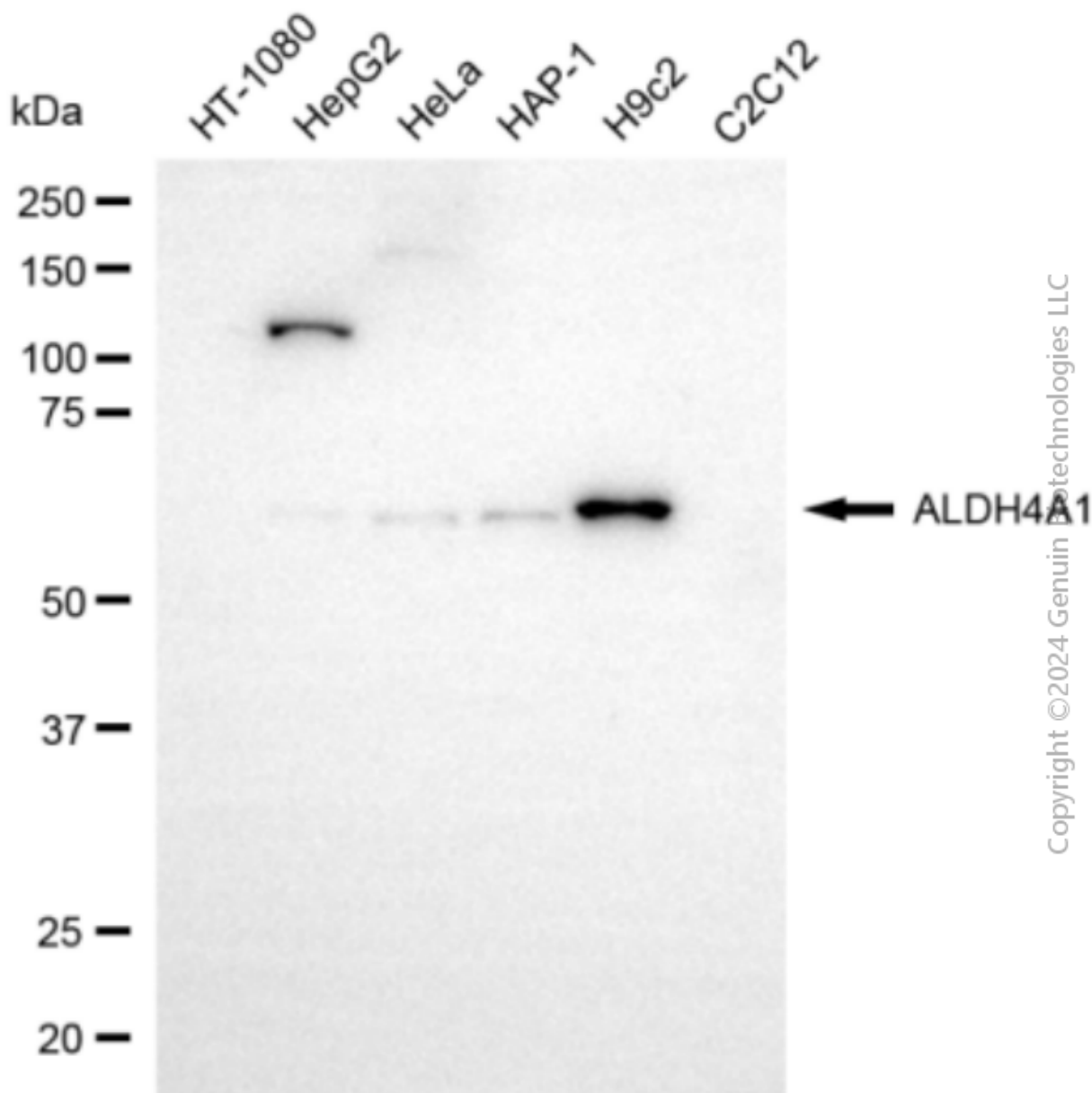
#### ORDERS

SALES@GENUINBIOTECH.COM  
FAX: +1-540-855-7041

[WWW.GENUINBIOTECH.COM](http://WWW.GENUINBIOTECH.COM)

**Note:** This product is for research use only.

## Validation Data



Western blotting analysis using anti-ALDH4A1 antibody (Cat#3588). Total cell lysates (30 µg) from various cell lines were loaded and separated by SDS-PAGE. The blot was incubated with anti-ALDH4A1 antibody (Cat#3588, 1:2,500) and HRP-conjugated goat anti-mouse secondary antibody (Cat#101, 1:20,000) respectively. Image was developed using FeQ™ ECL Substrate Kit (Cat#226).

### SUPPORT

SUPPORT@GENUINBIOTECH.COM  
TEL: +1-540-855-7041

### ORDERS

SALES@GENUINBIOTECH.COM  
FAX: +1-540-855-7041

[WWW.GENUINBIOTECH.COM](http://WWW.GENUINBIOTECH.COM)