

Catalog #: 3644

Aliases

ALDH1A3; Aldehyde Dehydrogenase 1 Family Member A3; Retinaldehyde Dehydrogenase 3; RALDH3; ALDH6; Aldehyde Dehydrogenase 6; Aldehyde Dehydrogenase 1 Family, Member A3; Aldehyde Dehydrogenase Family 1 Member A3; Acetaldehyde Dehydrogenase 6; EC 1.2.1.36; EC 1.2.1; ALDH1A6; RALDH-3; RalDH3; MCOP8

Background

Gene Name: ALDH1A3

NCBI Gene Entry: [220](#)

UniProt Entry: [P47895](#)

Application Information

Molecular Weight: Predicted, 56 kDa;
observed, 56 kDa

Clonality: Mouse monoclonal antibody

Clone ID: 24GB6710

Species Reactivity: Human

Applications Tested: Western blotting (WB)

Immunogen

Recombinant protein of human ALDH1A3

Isotype

Mouse IgG1

Storage Buffer

Supplied in PBS (pH 7.4) containing 50% glycerol, and 0.02% sodium azide.

Storage

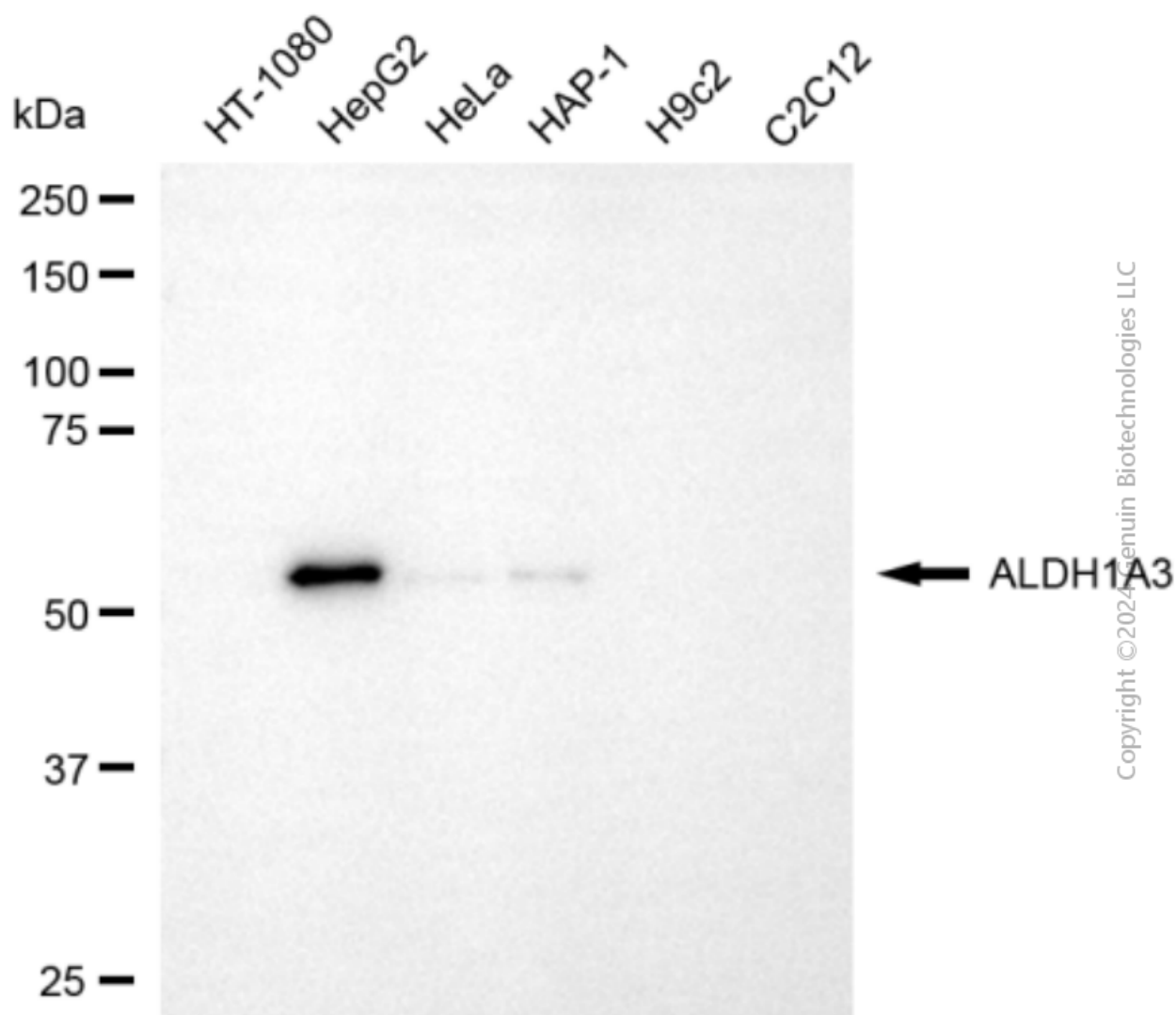
Store at -20 °C for one year.

Recommended Dilutions

Western Blotting (WB): 1:500-1:1,000

Note: This product is for research use only.

Validation Data



Western blotting analysis using anti-ALDH1A3 antibody (Cat#3644). Total cell lysates (30 µg) from various cell lines were loaded and separated by SDS-PAGE. The blot was incubated with anti-ALDH1A3 antibody (Cat#3644, 1:1,000) and HRP-conjugated goat anti-mouse secondary antibody (Cat#101, 1:20,000) respectively. Image was developed using FeQ™ ECL Substrate Kit (Cat#226).

SUPPORT

SUPPORT@GENUINBIOTECH.COM
TEL: +1-540-855-7041

ORDERS

SALES@GENUINBIOTECH.COM
FAX: +1-540-855-7041

WWW.GENUINBIOTECH.COM