

Catalog #: 3648

Aliases

CSNK1E; Casein Kinase 1 Epsilon; CKIepsilon; HCKIE; CKIE; Casein Kinase I Isoform Epsilon; EC 2.7.11.1; Casein Kinase 1, Epsilon; CKI-Epsilon; EC 2.7.11; CKIe

Background

Gene Name: CSNK1E

NCBI Gene Entry: [1454](#)

UniProt Entry: [P49674](#)

Application Information

Molecular Weight: Predicted, 47 kDa; observed, 43 kDa

Clonality: Mouse monoclonal antibody

Clone ID: 24GB6725

Species Reactivity: Human, mouse, rat

Applications Tested: Western blotting (WB), flow cytometry (FCM), immunocytochemistry (IC)

Immunogen

Recombinant protein of human CSNK1E

Isotype

Mouse IgG1

Storage Buffer

Supplied in PBS (pH 7.4) containing 50% glycerol, and 0.02% sodium azide.

Storage

Store at -20 °C for one year.

Recommended Dilutions

Western Blotting (WB): 1:1,000-1:2,500

Flow Cytometry (FCM): 1:2,000

Immunocytochemistry (IC): 1:100-1:1,000

Note: This product is for research use only.

Validation Data

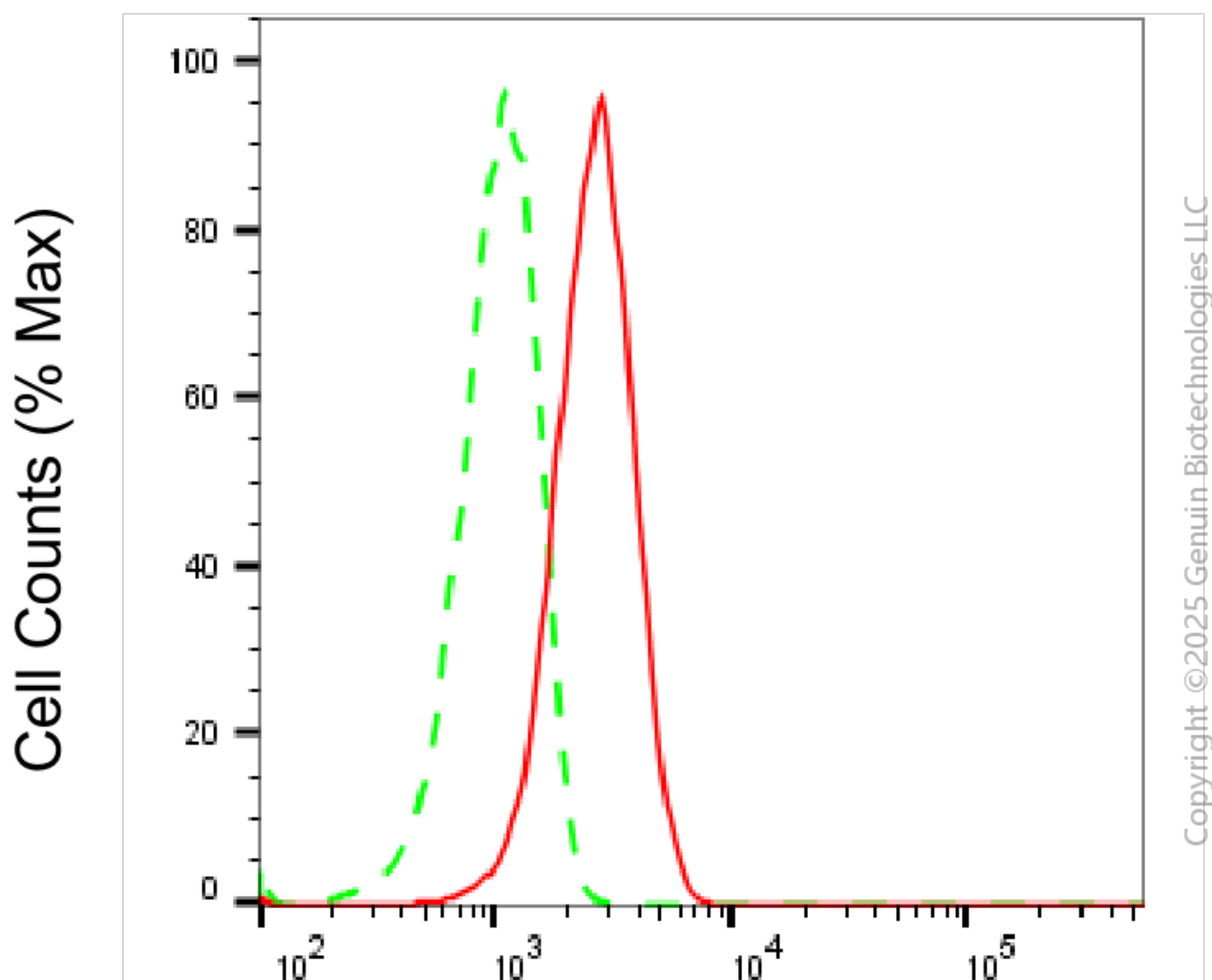
SUPPORT

SUPPORT@GENUINBIOTECH.COM
TEL: +1-540-855-7041

ORDERS

SALES@GENUINBIOTECH.COM
FAX: +1-540-855-7041

WWW.GENUINBIOTECH.COM



Casein kinase 1 epsilon-Alexa Fluor® 647

Flow cytometric analysis of Casein kinase 1 epsilon expression in HT-1080 cells using anti-Casein kinase 1 epsilon antibody (Cat#3648, 1:2,000). Green, isotype control; red, Casein kinase 1 epsilon.

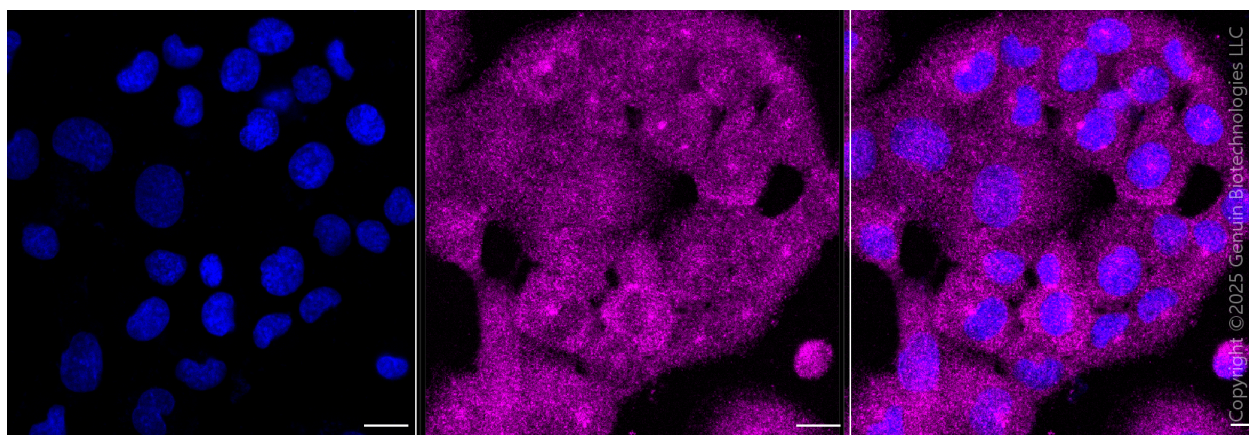
SUPPORT

SUPPORT@GENUINBIOTECH.COM
TEL: +1-540-855-7041

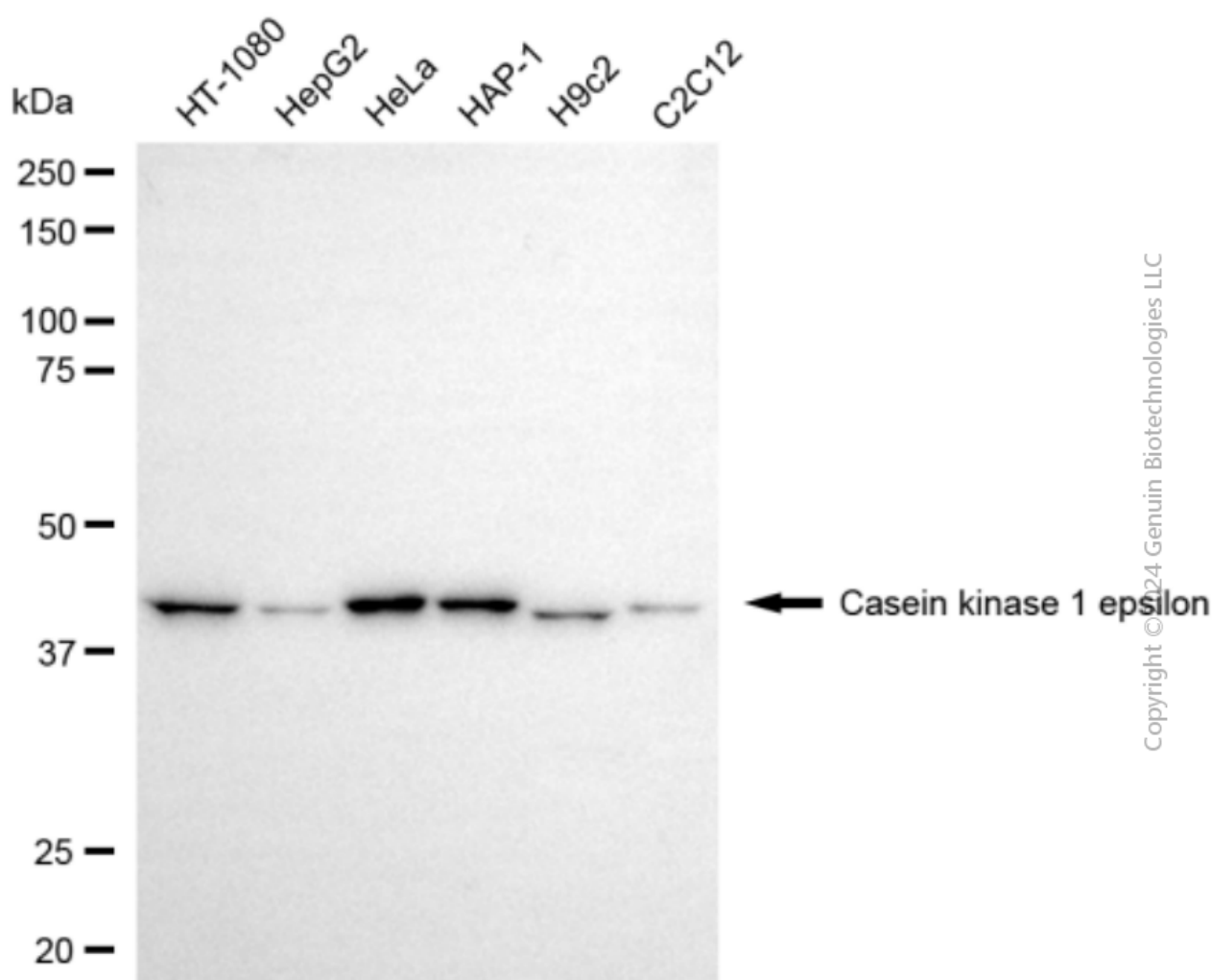
ORDERS

SALES@GENUINBIOTECH.COM
FAX: +1-540-855-7041

WWW.GENUINBIOTECH.COM



Immunocytochemical staining of HepG2 cells with anti-Casein kinase 1 epsilon antibody (Cat #3648, 1:1,000). Nuclei were stained blue with DAPI; Casein kinase 1 epsilon was stained magenta with Alexa Fluor® 647. Images were taken using Leica stellaris 5. Protein abundance based on laser Intensity and smart gain: Medium. Scale bar, 20 μ m.



Western blotting analysis using anti-casein kinase 1 epsilon antibody (Cat#3648). Total cell lysates

SUPPORT

SUPPORT@GENUINBIOTECH.COM
TEL: +1-540-855-7041

ORDERS

SALES@GENUINBIOTECH.COM
FAX: +1-540-855-7041

WWW.GENUINBIOTECH.COM

(30 µg) from various cell lines were loaded and separated by SDS-PAGE. The blot was incubated with anti-casein kinase 1 epsilon antibody (Cat#3648, 1:2,500) and HRP-conjugated goat anti-mouse secondary antibody (Cat#101, 1:20,000) respectively. Image was developed using FeQ™ ECL Substrate Kit (Cat#226).