

Catalog #: 3673

Aliases

ARFGEF2; ADP Ribosylation Factor Guanine Nucleotide Exchange Factor 2; BIG2; Brefeldin A-Inhibited Guanine Nucleotide-Exchange Protein 2; ADP-Ribosylation Factor Guanine Nucleotide-Exchange Factor 2 (Brefeldin A-Inhibited); Brefeldin A-Inhibited GEP; ADP-Ribosylation Factor Guanine Nucleotide-Exchange Factor; DJ1164I10.1; ARFGEP2; PVNH2

Background

Gene Name: ARFGEF2

NCBI Gene Entry: [10564](#)

UniProt Entry: [Q9Y6D5](#)

Application Information

Molecular Weight: Predicted, 202 kDa; observed, 230 kDa

Clonality: Rabbit monoclonal antibody

Clone ID: 24GB6840

Species Reactivity: Human, mouse, rat

Applications Tested: Western blotting (WB), flow cytometry (FCM), immunocytochemistry (IC)

Immunogen

A synthesized peptide derived from human ARFGEF2

Isotype

Rabbit IgG

Storage Buffer

Supplied in PBS (pH 7.4) containing 50% glycerol, and 0.02% sodium azide.

Storage

Store at -20 °C for one year.

Recommended Dilutions

Western Blotting (WB): 1:1,000-1:5,000

Flow Cytometry (FCM): 1:2,000

Immunocytochemistry (IC): 1:100-1:1,000

SUPPORT

SUPPORT@GENUINBIOTECH.COM
TEL: +1-540-855-7041

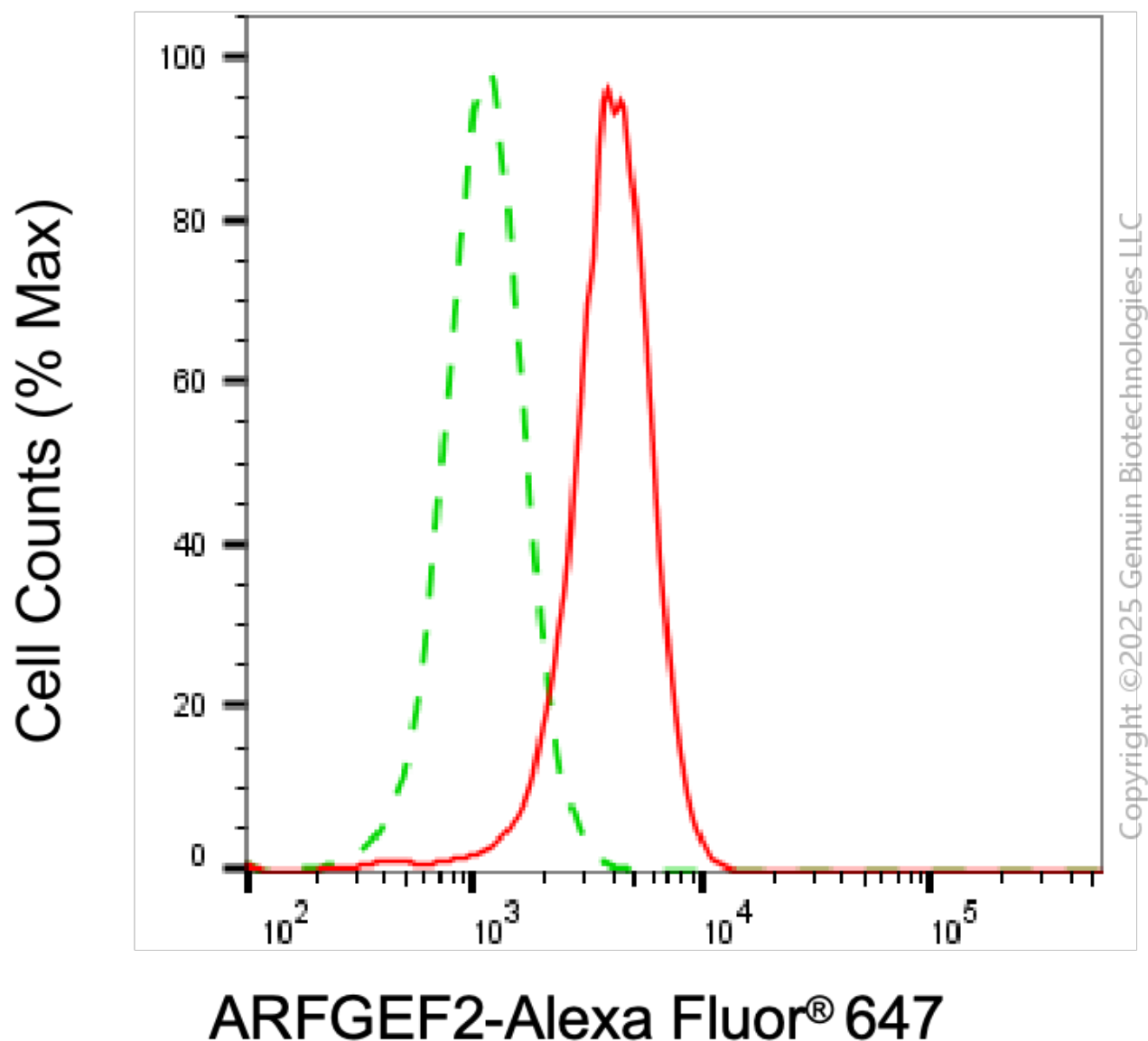
ORDERS

SALES@GENUINBIOTECH.COM
FAX: +1-540-855-7041

WWW.GENUINBIOTECH.COM

Note: This product is for research use only.

Validation Data



Flow cytometric analysis of ARFGEF2 expression in HepG2 cells using anti-ARFGEF2 antibody (Cat#3673, 1:2,000). Green, isotype control; red, ARFGEF2.

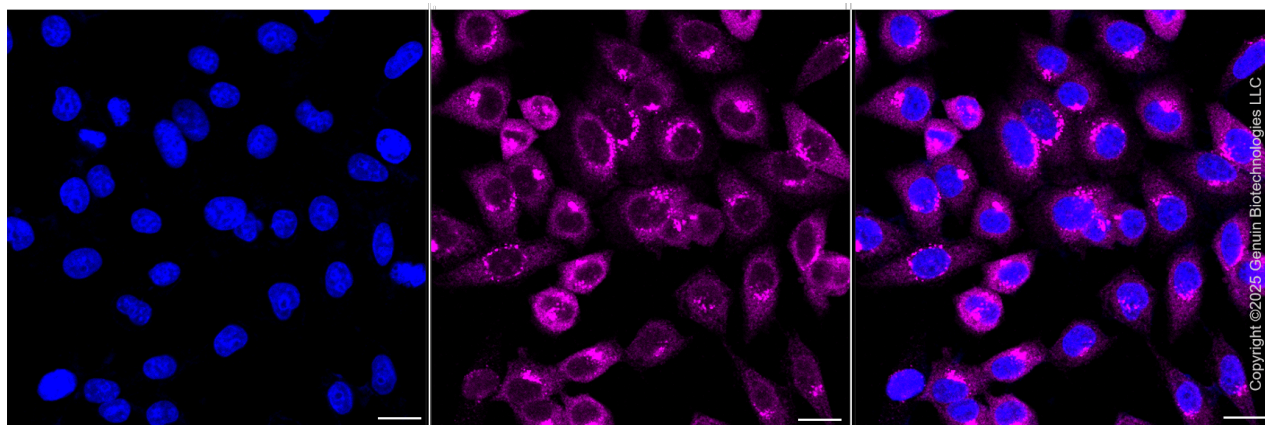
SUPPORT

SUPPORT@GENUINBIOTECH.COM
TEL: +1-540-855-7041

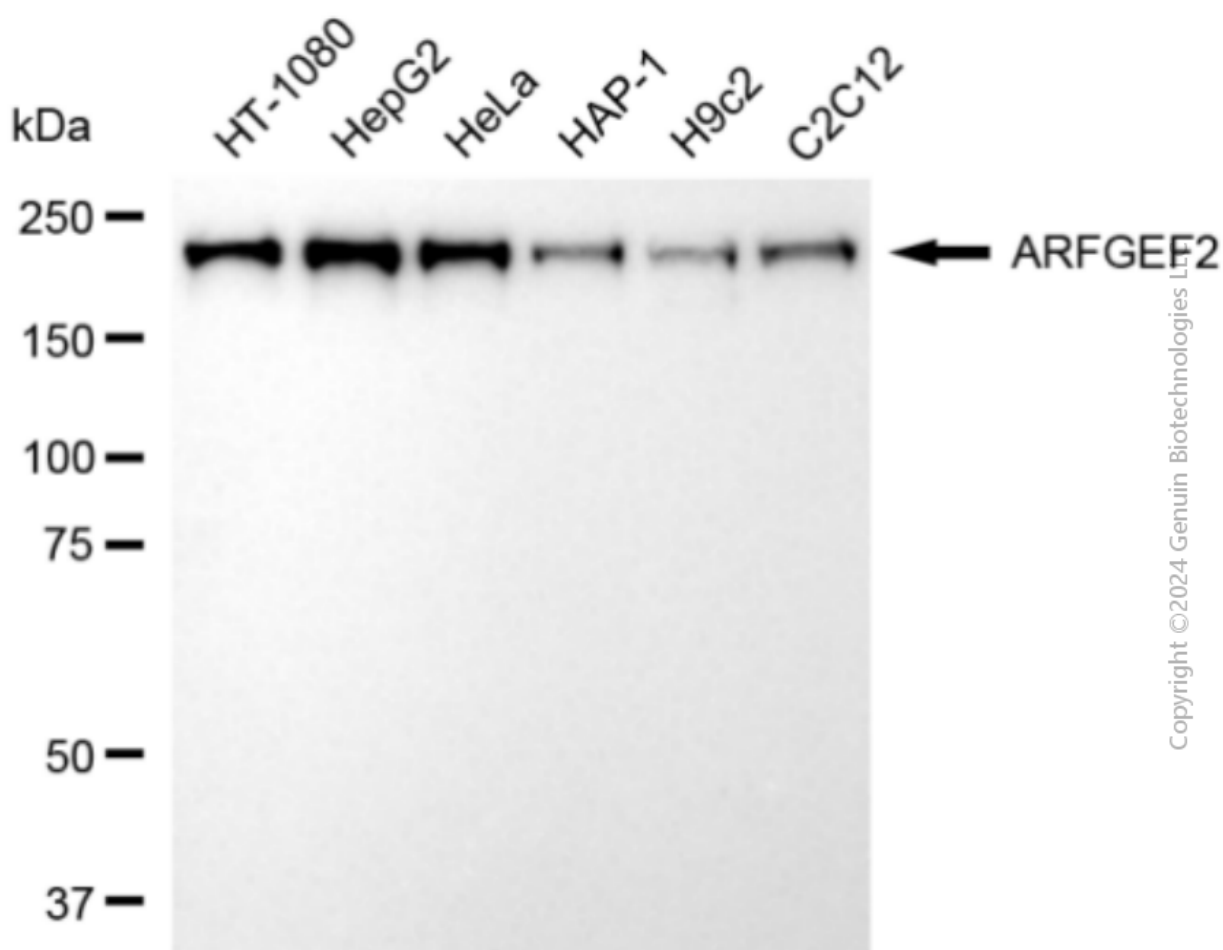
ORDERS

SALES@GENUINBIOTECH.COM
FAX: +1-540-855-7041

WWW.GENUINBIOTECH.COM



Immunocytochemical staining of HepG2 cells with anti-ARFGEF2 antibody (Cat#3673, 1:1,000). Nuclei were stained blue with DAPI; ARFGEF2 was stained magenta with Alexa Fluor® 647. Images were taken using Leica stellaris 5. Protein abundance based on laser Intensity and smart gain: Medium. Scale bar, 20 µm.



Western blotting analysis using anti-ARFGEF2 antibody (Cat#3673). Total cell lysates (30 µg) from various cell lines were loaded and separated by SDS-PAGE. The blot was incubated with

SUPPORT

SUPPORT@GENUINBIOTECH.COM
TEL: +1-540-855-7041

ORDERS

SALES@GENUINBIOTECH.COM
FAX: +1-540-855-7041

WWW.GENUINBIOTECH.COM

anti-ARFGEF2 antibody (Cat#3673, 1:5,000) and HRP-conjugated goat anti-rabbit secondary antibody (Cat#201, 1:20,000) respectively. Image was developed using NaQ™ ECL Substrate Kit (Cat#716).