

Catalog #: 3675

Aliases

ATXN1; Ataxin 1; ATX1; D6S504E; SCA1; Spinocerebellar Ataxia Type 1 Protein; Ataxin-1; Spinocerebellar Ataxia 1 (Olivopontocerebellar Ataxia 1, Autosomal Dominant, Ataxin 1); Alternative Ataxin1

Background

Gene Name: ATXN1

NCBI Gene Entry: [6310](#)

UniProt Entry: [P54253](#)

Application Information

Molecular Weight: Predicted, 87 kDa; observed, 110 kDa

Clonality: Rabbit monoclonal antibody

Clone ID: 24GB6850

Species Reactivity: Human, mouse

Applications Tested: Western blotting (WB), flow cytometry (FCM), immunocytochemistry (IC)

Immunogen

Recombinant protein of human Ataxin 1

Isotype

Rabbit IgG

Storage Buffer

Supplied in PBS (pH 7.4) containing 50% glycerol, and 0.02% sodium azide.

Storage

Store at -20 °C for one year.

Recommended Dilutions

Western Blotting (WB): 1:1,000-1:5,000

Flow Cytometry (FCM): 1:2,000

Immunocytochemistry (IC): 1:100-1:1,000

Note: This product is for research use only.

SUPPORT

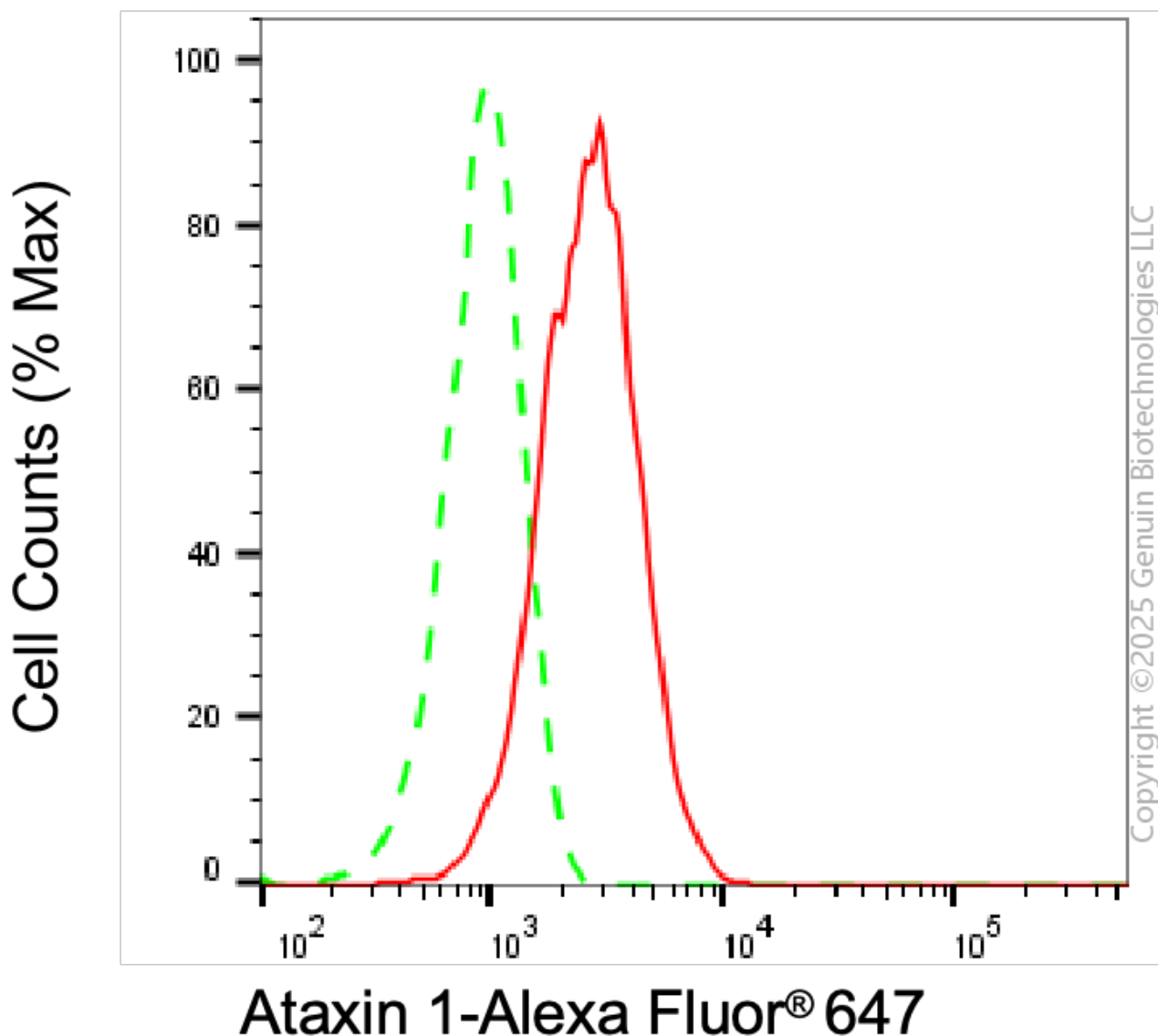
SUPPORT@GENUINBIOTECH.COM
TEL: +1-540-855-7041

ORDERS

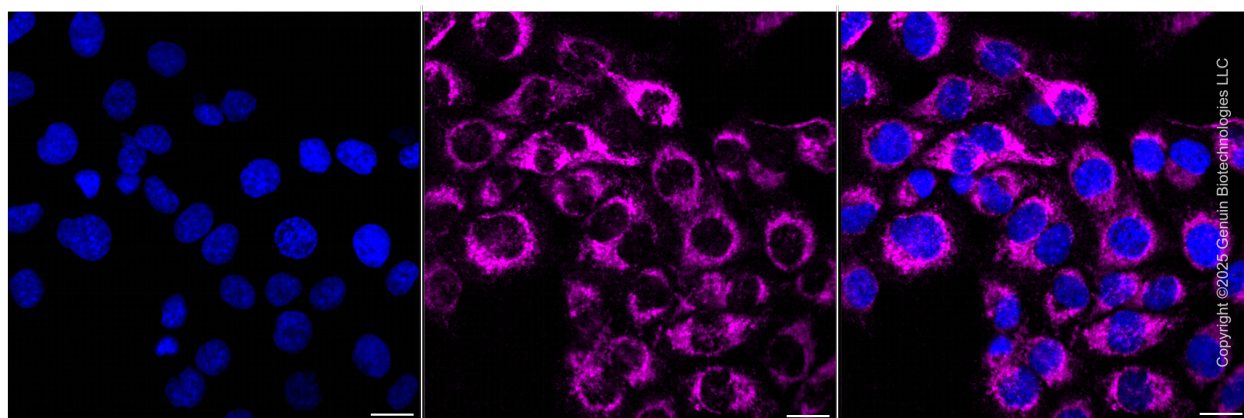
SALES@GENUINBIOTECH.COM
FAX: +1-540-855-7041

WWW.GENUINBIOTECH.COM

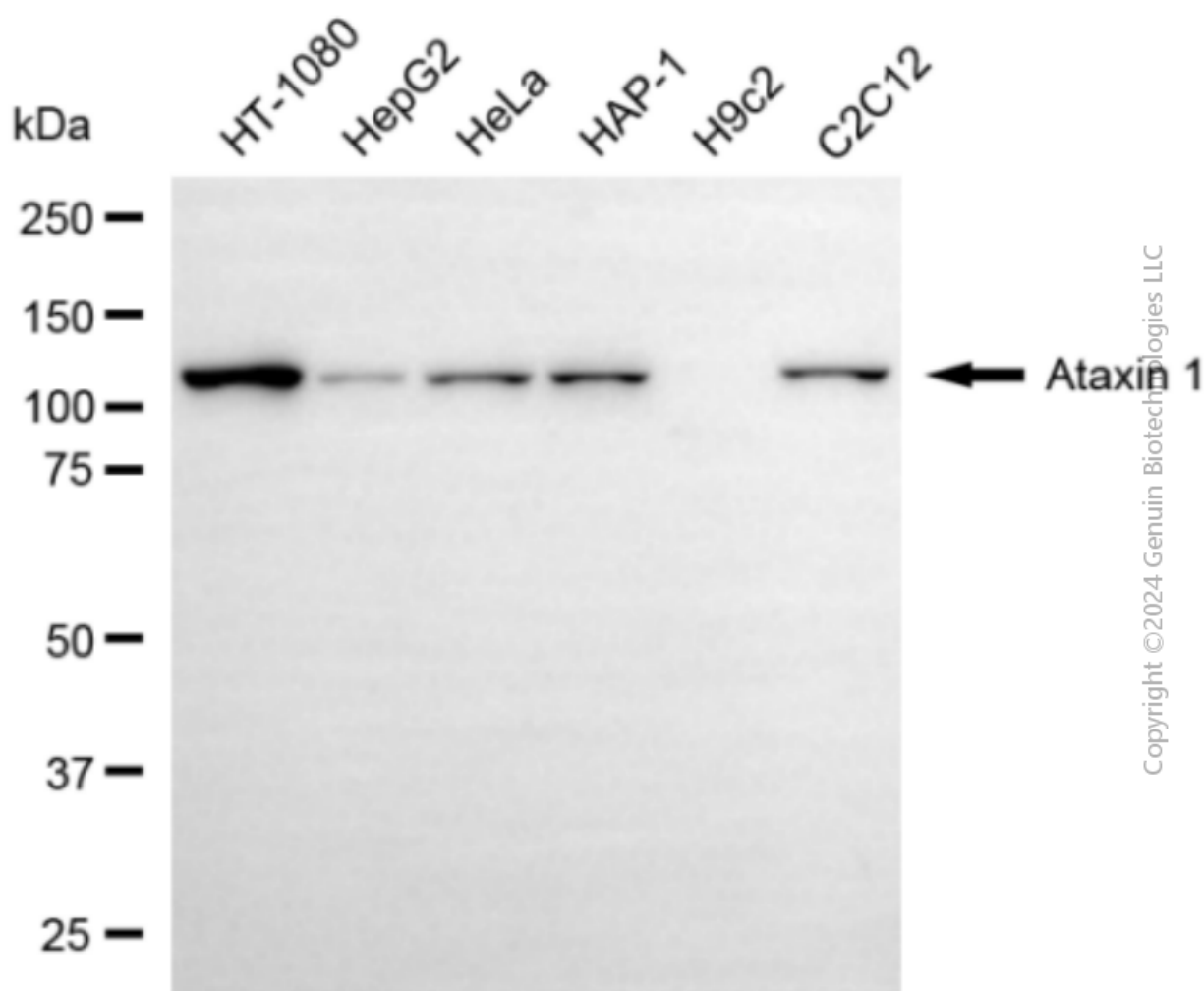
Validation Data



Flow cytometric analysis of Ataxin 1 expression in HT-1080 cells using anti-Ataxin 1 antibody (Cat#3675, 1:2,000). Green, isotype control; red, Ataxin 1.



Immunocytochemical staining of HT-1080 cells with anti-Ataxin 1 antibody (Cat#3675, 1:1,000) . Nuclei were stained blue with DAPI; Ataxin 1 was stained magenta with Alexa Fluor® 647. Images were taken using Leica stellaris 5. Protein abundance based on laser Intensity and smart gain: High. Scale bar, 20 μ m.

**SUPPORT**

SUPPORT@GENUINBIOTECH.COM
TEL: +1-540-855-7041

ORDERS

SALES@GENUINBIOTECH.COM
FAX: +1-540-855-7041

WWW.GENUINBIOTECH.COM

Western blotting analysis using anti-ataxin 1 antibody (Cat#3675). Total cell lysates (30 µg) from various cell lines were loaded and separated by SDS-PAGE. The blot was incubated with anti-ataxin 1 antibody (Cat#3675, 1:5,000) and HRP-conjugated goat anti-rabbit secondary antibody (Cat#201, 1:20,000) respectively. Image was developed using NaQ™ ECL Substrate Kit (Cat#716).