

Catalog #: 3676

Aliases

ATP6V0D1; ATPase H⁺ Transporting V0 Subunit D1; VPATPD; P39; ATP6DV; ATP6D; VATX; Vma6; ATPase, H⁺ Transporting, Lysosomal (Vacuolar Proton Pump), Member D; ATPase, H⁺ Transporting, Lysosomal 38kDa, V0 Subunit D1; V-ATPase 40 KDa Accessory Protein; V-Type Proton ATPase Subunit D 1; Vacuolar Proton Pump Subunit D 1; 32 KDa Accessory Protein; V-ATPase AC39 Subunit; V-ATPase Subunit D 1; ATPase, H⁺ Transporting, Lysosomal 38kDa, V0 Subunit D Isoform 1; H(+)-Transporting Two-Sector ATPase, Subunit D; V-ATPase Subunit D1; V-ATPase, Subunit D

Background

Gene Name: ATP6V0D1

NCBI Gene Entry: [9114](#)

UniProt Entry: [P61421](#)

Application Information

Molecular Weight: Predicted, 40 kDa; observed, 37 kDa

Clonality: Rabbit monoclonal antibody

Clone ID: 24GB6855

Species Reactivity: Human, mouse, rat

Applications Tested: Western blotting (WB), flow cytometry (FCM), immunocytochemistry (IC)

Immunogen

Recombinant protein of human ATP6V0D1

Isotype

Rabbit IgG

Storage Buffer

Supplied in PBS (pH 7.4) containing 50% glycerol, and 0.02% sodium azide.

Storage

Store at -20 °C for one year.

Recommended Dilutions

Western Blotting (WB): 1:1,000-1:5,000

Flow Cytometry (FCM): 1:2,000

SUPPORT

SUPPORT@GENUINBIOTECH.COM
TEL: +1-540-855-7041

ORDERS

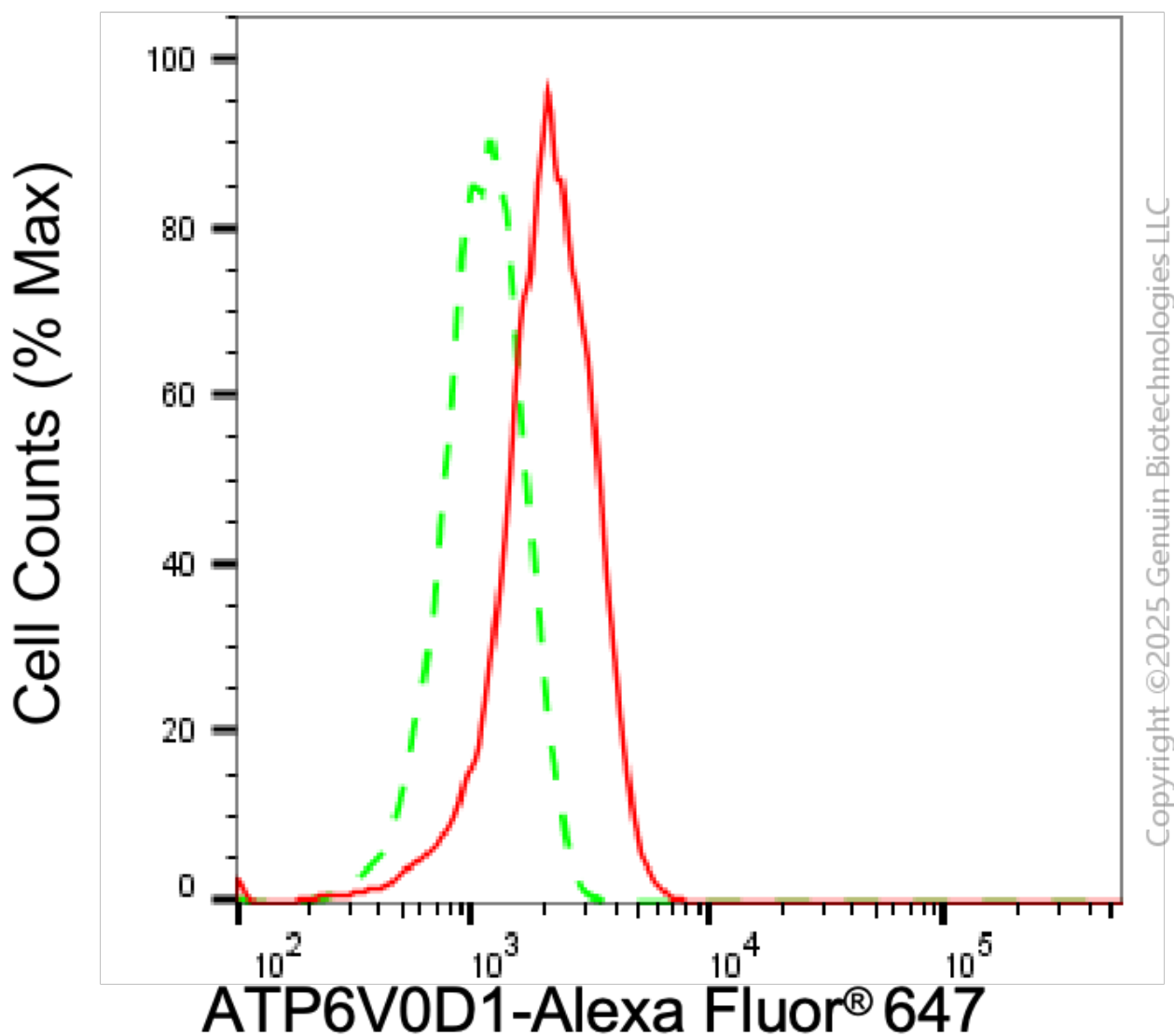
SALES@GENUINBIOTECH.COM
FAX: +1-540-855-7041

WWW.GENUINBIOTECH.COM

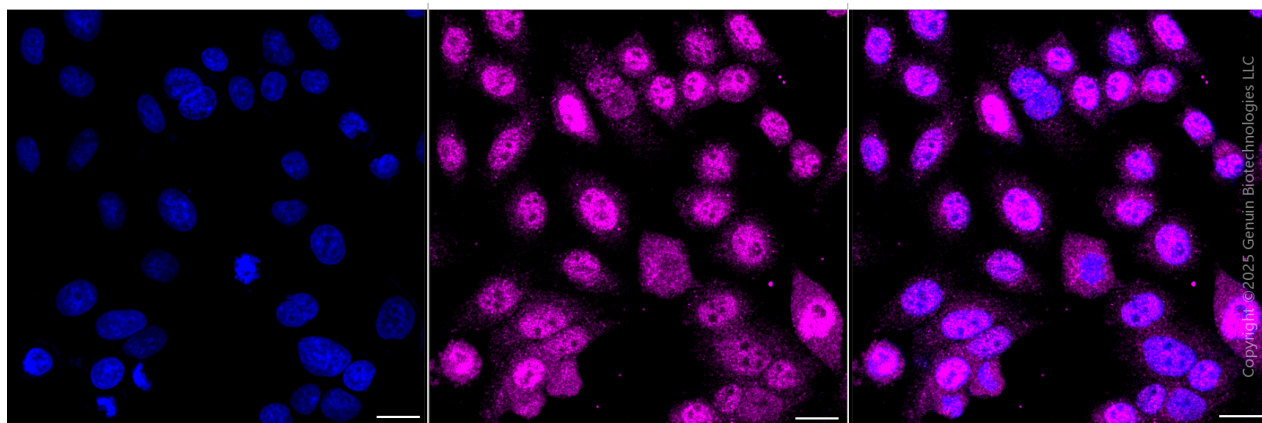
Immunocytochemistry (IC): 1:100-1:1,000

Note: This product is for research use only.

Validation Data



Flow cytometric analysis of ATP6V0D1 expression in HepG2 cells using anti-ATP6V0D1 antibody (Cat#3676, 1:2,000). Green, isotype control; red, ATP6V0D1.



Immunocytochemical staining of HepG2 cells with anti-ATP6V0D1 antibody (Cat#3676, 1:1,000) . Nuclei were stained blue with DAPI; ATP6V0D1 was stained magenta with Alexa Fluor® 647. Images were taken using Leica stellaris 5. Protein abundance based on laser Intensity and smart gain: Medium. Scale bar, 20 μ m.

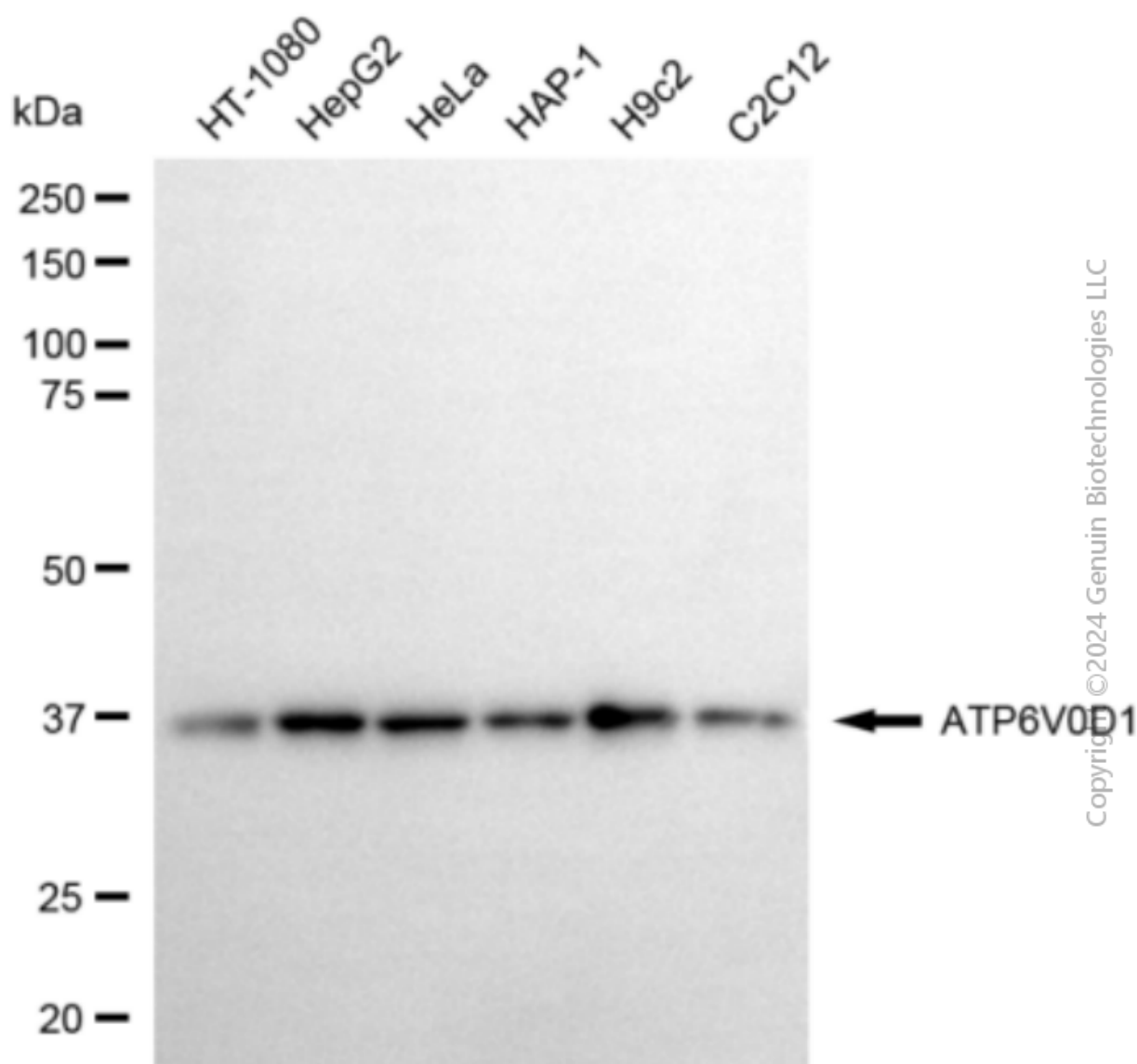
SUPPORT

SUPPORT@GENUINBIOTECH.COM
TEL: +1-540-855-7041

ORDERS

SALES@GENUINBIOTECH.COM
FAX: +1-540-855-7041

WWW.GENUINBIOTECH.COM



Western blotting analysis using anti-ATP6V0D1 antibody (Cat#3676). Total cell lysates (30 μ g) from various cell lines were loaded and separated by SDS-PAGE. The blot was incubated with anti-ATP6V0D1 antibody (Cat#3676, 1:5,000) and HRP-conjugated goat anti-rabbit secondary antibody (Cat#201, 1:20,000) respectively. Image was developed using NaQ™ ECL Substrate Kit (Cat#716).

SUPPORT

SUPPORT@GENUINBIOTECH.COM
TEL: +1-540-855-7041

ORDERS

SALES@GENUINBIOTECH.COM
FAX: +1-540-855-7041

WWW.GENUINBIOTECH.COM