

Catalog #: 3682

Aliases

CAMK2B; Calcium/Calmodulin Dependent Protein Kinase II Beta; CAMK2; CAM2; CAMKB; Calcium/Calmodulin-Dependent Protein Kinase Type II Subunit Beta; Proline Rich Calmodulin-Dependent Protein Kinase; CaM Kinase II Beta Subunit; CaM-Kinase II Beta Chain; CaMK-II Subunit Beta; EC 2.7.11.17; Calcium/Calmodulin-Dependent Protein Kinase (CaM Kinase) II Beta; Calcium/Calmodulin-Dependent Protein Kinase Type II Beta Chain; CaM Kinase II Subunit Beta; CaMKIIbeta; EC 2.7.11; CaMKIIβ; CAMKIIB; MRD54

Background

Gene Name: CAMK2B

NCBI Gene Entry: [816](#)

UniProt Entry: [Q13554](#)

Application Information

Molecular Weight: Predicted, 73 kDa; observed, 54 kDa

Clonality: Rabbit monoclonal antibody

Clone ID: 24GB6885

Species Reactivity: Human, mouse, rat

Applications Tested: Western blotting (WB), flow cytometry (FCM), immunocytochemistry (IC)

Immunogen

A synthesized peptide derived from human CaMKII

Isotype

Rabbit IgG

Storage Buffer

Supplied in PBS (pH 7.4) containing 50% glycerol, and 0.02% sodium azide.

Storage

Store at -20 °C for one year.

Recommended Dilutions

Western Blotting (WB): 1:1,000-1:5,000

Flow Cytometry (FCM): 1:2,000

Immunocytochemistry (IC): 1:100-1:1,000

SUPPORT

SUPPORT@GENUINBIOTECH.COM
TEL: +1-540-855-7041

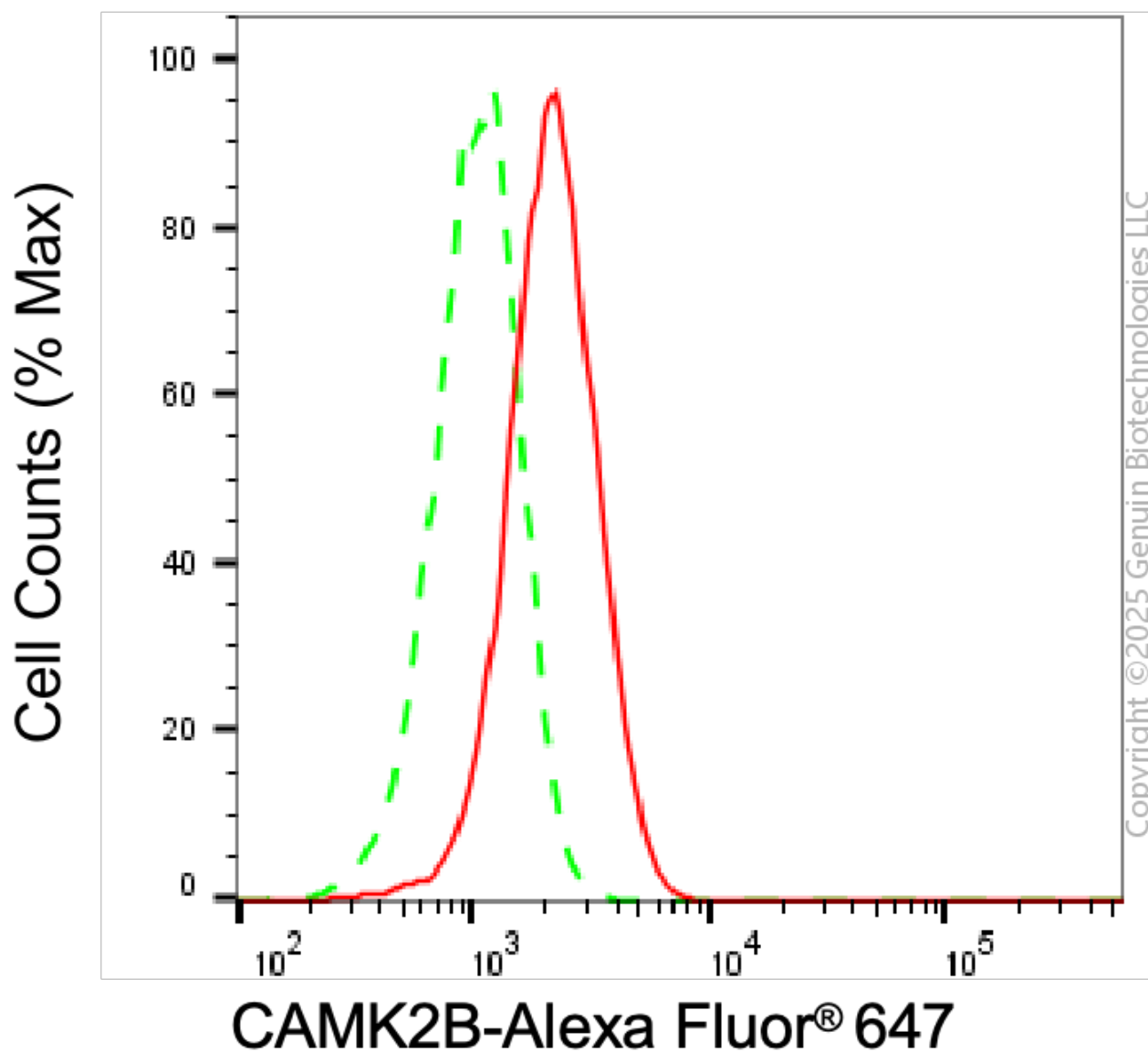
ORDERS

SALES@GENUINBIOTECH.COM
FAX: +1-540-855-7041

WWW.GENUINBIOTECH.COM

Note: This product is for research use only.

Validation Data



Flow cytometric analysis of CAMK2B expression in HAP-1 cells using anti-CAMK2B antibody (Cat#3682, 1:2,000). Green, isotype control; red, CAMK2B.

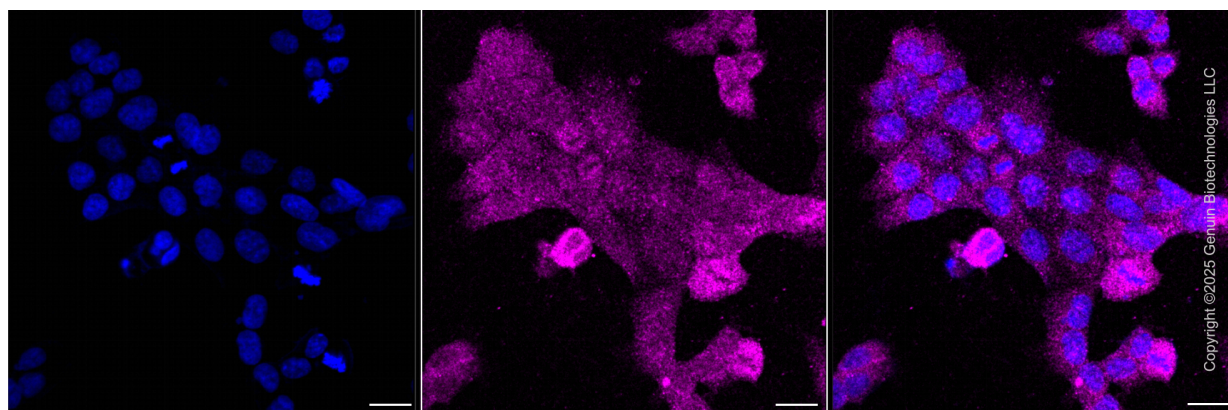
SUPPORT

SUPPORT@GENUINBIOTECH.COM
TEL: +1-540-855-7041

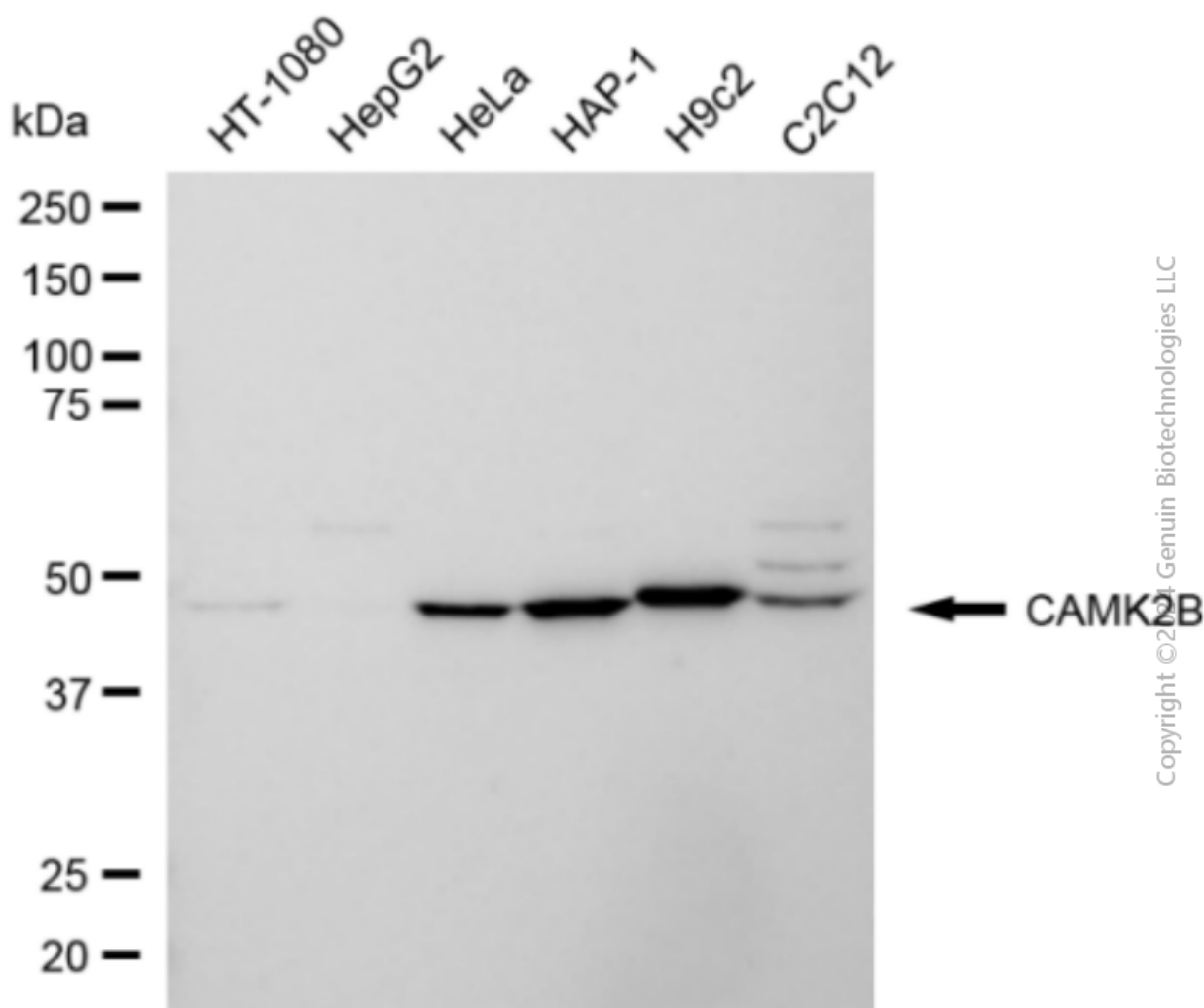
ORDERS

SALES@GENUINBIOTECH.COM
FAX: +1-540-855-7041

WWW.GENUINBIOTECH.COM



Immunocytochemical staining of HAP1 cells with anti-CAMK2B antibody (Cat#3682, 1:1,000). Nuclei were stained blue with DAPI; CAMK2B stained magenta with Alexa Fluor® 647. Images were taken using Leica stellaris 5. Protein abundance based on laser Intensity and smart gain: Low. Scale bar, 20 μ m.



Western blotting analysis using anti-CAMK2B antibody (Cat#3682). Total cell lysates (30 μ g)

SUPPORT

SUPPORT@GENUINBIOTECH.COM
TEL: +1-540-855-7041

ORDERS

SALES@GENUINBIOTECH.COM
FAX: +1-540-855-7041

WWW.GENUINBIOTECH.COM

from various cell lines were loaded and separated by SDS-PAGE. The blot was incubated with anti-CAMK2B antibody (Cat#3682, 1:5,000) and HRP-conjugated goat anti-rabbit secondary antibody (Cat#201, 1:20,000) respectively. Image was developed using NaQ™ ECL Substrate Kit (Cat#716).