

## Catalog #: 3687

## Aliases

RAMP1; Receptor Activity Modifying Protein 1; Receptor Activity-Modifying Protein 1; CRLR Activity-Modifying Protein 1; Calcitonin Receptor-Like Receptor Activity Modifying Protein 1; Calcitonin-Receptor-Like Receptor Activity-Modifying Protein 1; Receptor (G Protein-Coupled) Activity Modifying Protein 1; Receptor (Calcitonin) Activity Modifying Protein 1

## Background

Gene Name: RAMP1

NCBI Gene Entry: [10267](#)

UniProt Entry: [O60894](#)

## Application Information

Molecular Weight: Predicted, 17 kDa; observed, 17 kDa

Clonality: Rabbit monoclonal antibody

Clone ID: 24GB6910

Species Reactivity: Human, mouse, rat

Applications Tested: Western blotting (WB), flow cytometry (FCM), immunocytochemistry (IC)

## Immunogen

A synthesized peptide derived from human RAMP1

## Isotype

Rabbit IgG

## Storage Buffer

Supplied in PBS (pH 7.4) containing 50% glycerol, and 0.02% sodium azide.

## Storage

Store at -20 °C for one year.

## Recommended Dilutions

Western Blotting (WB): 1:1,000-1:5,000

Flow Cytometry (FCM): 1:2,000

Immunocytochemistry (IC): 1:100-1:1,000

---

### SUPPORT

SUPPORT@GENUINBIOTECH.COM  
TEL: +1-540-855-7041

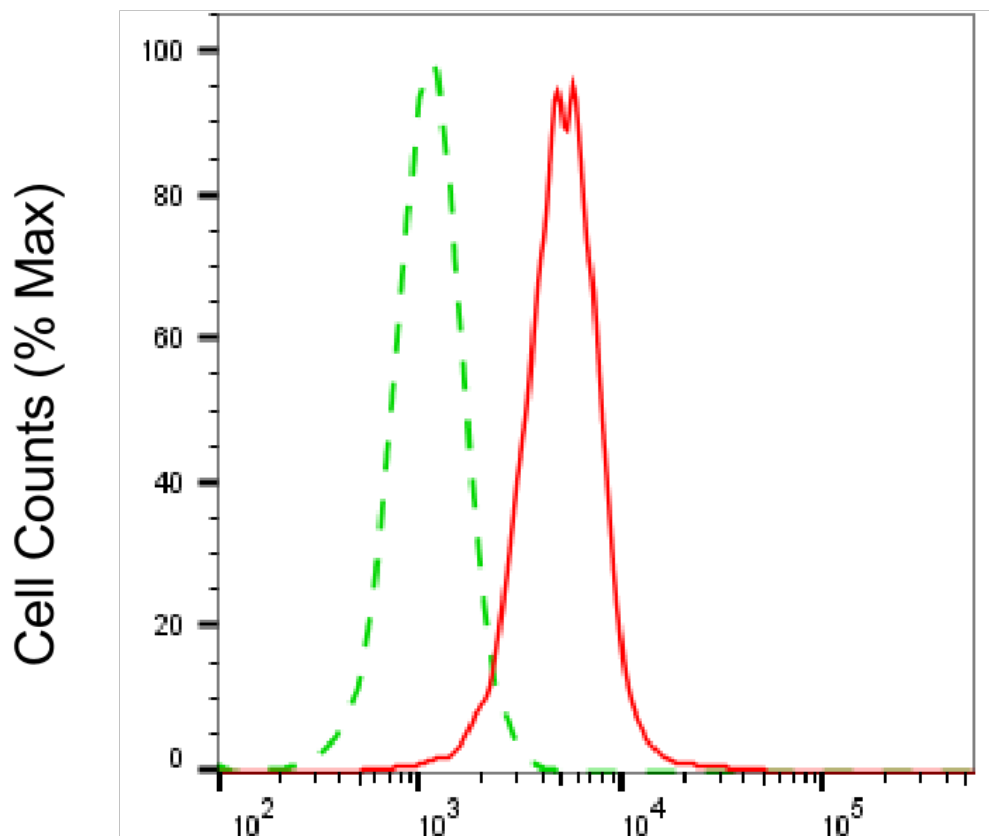
### ORDERS

SALES@GENUINBIOTECH.COM  
FAX: +1-540-855-7041

[WWW.GENUINBIOTECH.COM](http://WWW.GENUINBIOTECH.COM)

**Note:** This product is for research use only.

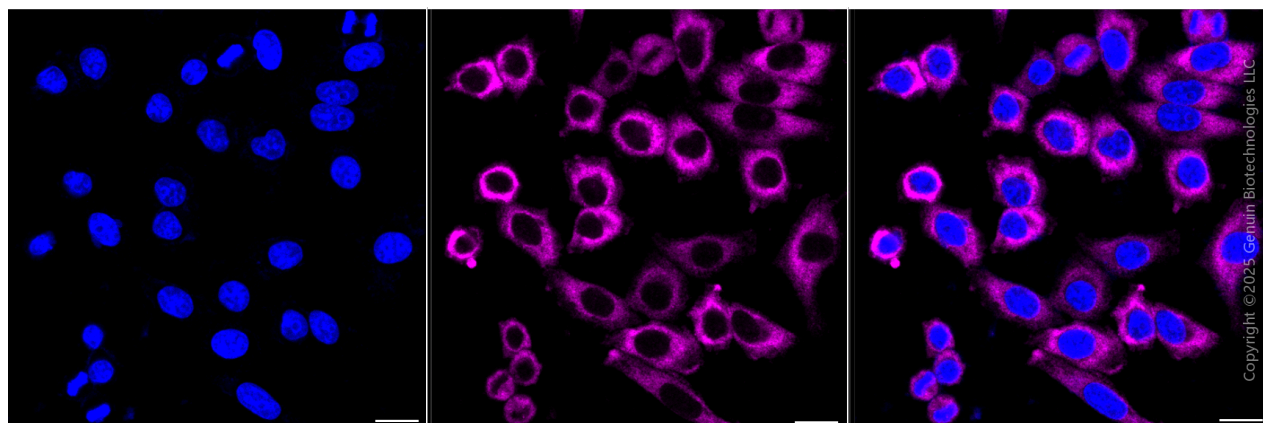
## Validation Data



Copyright ©2025 Genuin Biotechnologies LLC

## Receptor activity modifying protein 1-Alexa Fluor® 647

Flow cytometric analysis of Receptor activity modifying protein 1 expression in HepG2 cells using anti-Receptor activity modifying protein 1 antibody (Cat#3687, 1:2,000). Green, isotype control; red, Receptor activity modifying protein 1.



Copyright ©2025 Genuin Biotechnologies LLC

### SUPPORT

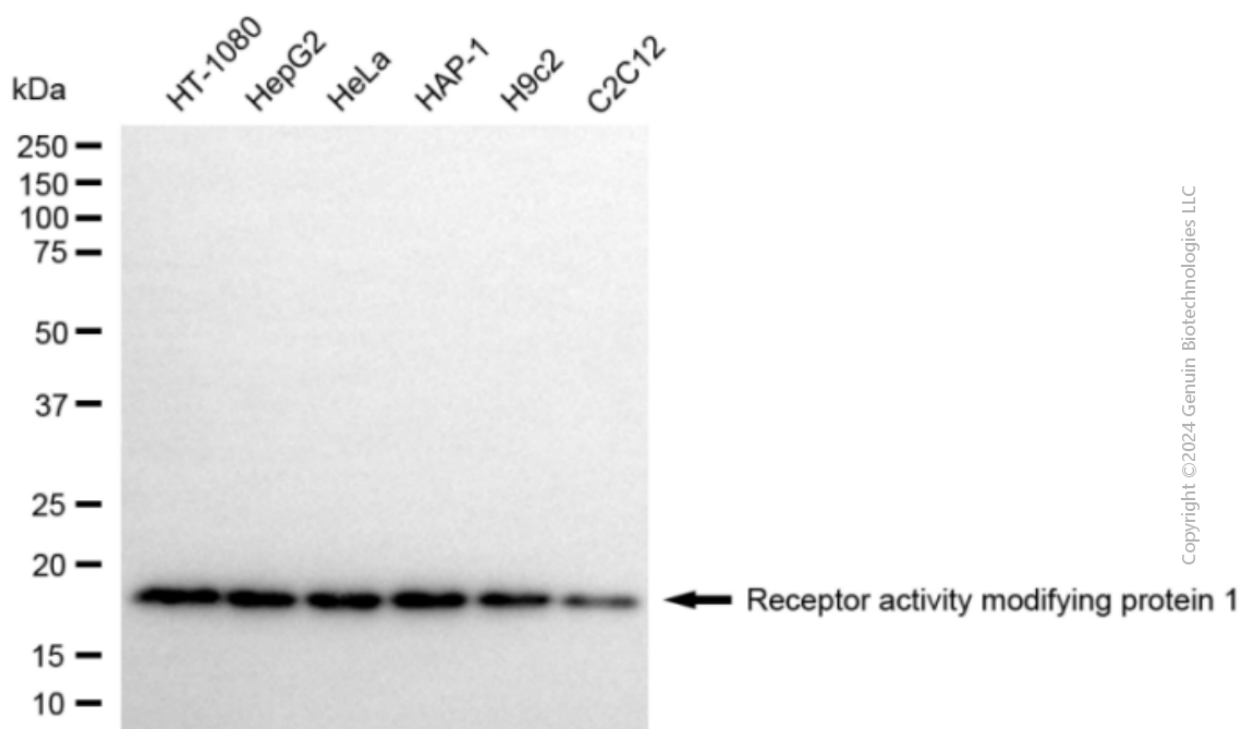
SUPPORT@GENUINBIOTECH.COM  
TEL: +1-540-855-7041

### ORDERS

SALES@GENUINBIOTECH.COM  
FAX: +1-540-855-7041

WWW.GENUINBIOTECH.COM

Immunocytochemical staining of HepG2 cells with anti-Receptor activity modifying protein 1 antibody (Cat#3687, 1:1,000) . Nuclei were stained blue with DAPI; Receptor activity modifying protein 1 was stained magenta with Alexa Fluor® 647. Images were taken using Leica stellaris 5. Protein abundance based on laser Intensity and smart gain: High. Scale bar, 20  $\mu$ m.



Western blotting analysis using anti-receptor activity modifying protein 1 antibody (Cat#3687). Total cell lysates (30  $\mu$ g) from various cell lines were loaded and separated by SDS-PAGE. The blot was incubated with anti-receptor activity modifying protein 1 antibody (Cat#3687, 1:5,000) and HRP-conjugated goat anti-rabbit secondary antibody (Cat#201, 1:20,000) respectively. Image was developed using NaQ™ ECL Substrate Kit (Cat#716).