

## Catalog #: 3688

### Aliases

RAP1GAP; RAP1 GTPase Activating Protein; RAP1GAPII; KIAA0474; RAP1GAP1; RAP1GA1; Rap1 GTPase-Activating Protein 1; RAP1, GTPase Activating Protein 1; Rap1GAP1; Rap1GAP; RAPGAP

### Background

Gene Name: RAP1GAP

NCBI Gene Entry: [5909](#)

UniProt Entry: [P47736](#)

### Application Information

Molecular Weight: Predicted, 73 kDa; observed, 95 kDa

Clonality: Rabbit monoclonal antibody

Clone ID: 24GB6915

Species Reactivity: Human, mouse, rat

Applications Tested: Western blotting (WB)

### Immunogen

A synthesized peptide derived from human RAP1GAP

### Isotype

Rabbit IgG

### Storage Buffer

Supplied in PBS (pH 7.4) containing 50% glycerol, and 0.02% sodium azide.

### Storage

Store at -20 °C for one year.

### Recommended Dilutions

Western Blotting (WB): 1:1,000-1:5,000

**Note:** This product is for research use only.

### Validation Data

---

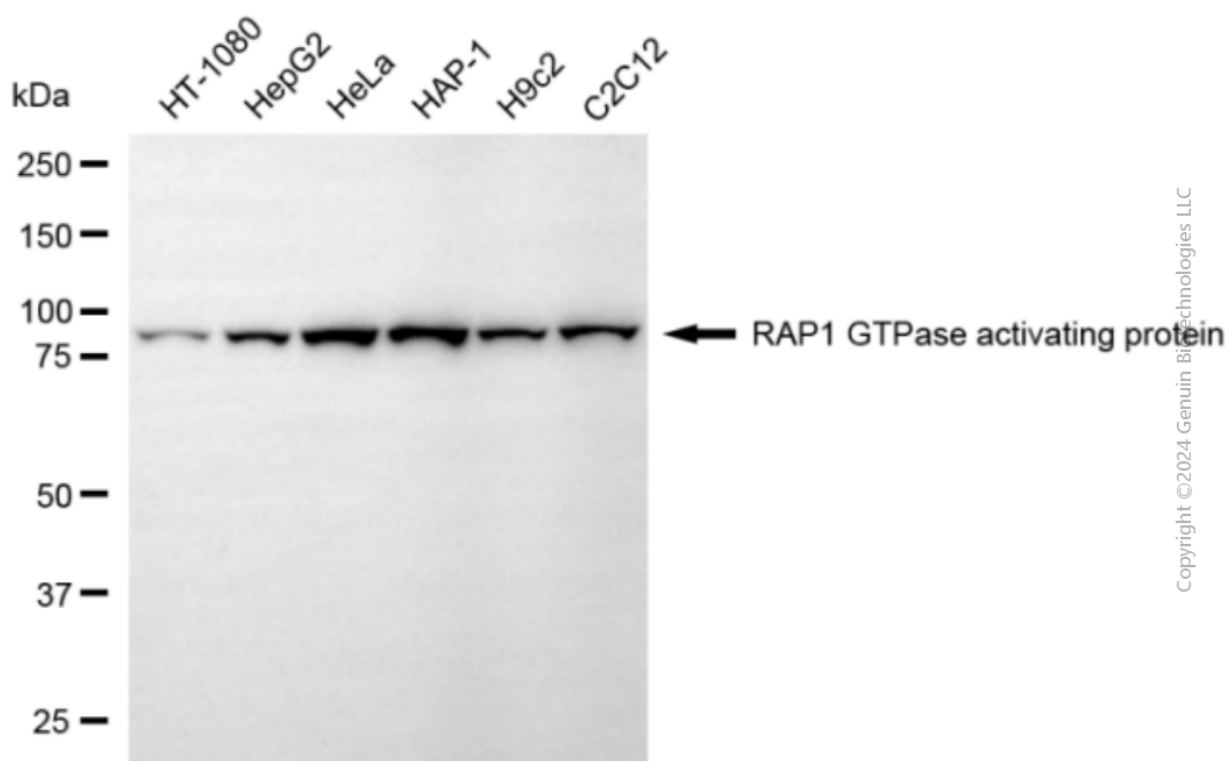
#### SUPPORT

SUPPORT@GENUINBIOTECH.COM  
TEL: +1-540-855-7041

#### ORDERS

SALES@GENUINBIOTECH.COM  
FAX: +1-540-855-7041

[WWW.GENUINBIOTECH.COM](http://WWW.GENUINBIOTECH.COM)



Western blotting analysis using anti-RAP1 GTPase activating protein antibody (Cat#3688). Total cell lysates (30  $\mu$ g) from various cell lines were loaded and separated by SDS-PAGE. The blot was incubated with anti-RAP1 GTPase activating protein antibody (Cat#3688, 1:5,000) and HRP-conjugated goat anti-rabbit secondary antibody (Cat#201, 1:20,000) respectively. Image was developed using NaQ™ ECL Substrate Kit (Cat#716).