

Catalog #: 3689

Aliases

SLAMF6; SLAM Family Member 6; NTB-A; KALI; SF2000; KAL1b; Ly108; CD352; NTBA; Activating NK Receptor; NK-T-B-Antigen; Natural Killer-, T- And B-Cell Antigen; NTBA Receptor; CD352 Antigen

Background

Gene Name: SLAMF6

NCBI Gene Entry: [114836](#)

UniProt Entry: [Q96DU3](#)

Application Information

Molecular Weight: Predicted, 37 kDa; observed, 60 kDa

Clonality: Rabbit monoclonal antibody

Clone ID: 24GB6920

Species Reactivity: Human

Applications Tested: Western blotting (WB), flow cytometry (FCM)

Immunogen

Recombinant protein of human SLAMF6

Isotype

Rabbit IgG

Storage Buffer

Supplied in PBS (pH 7.4) containing 50% glycerol, and 0.02% sodium azide.

Storage

Store at -20 °C for one year.

Recommended Dilutions

Western Blotting (WB): 1:1,000-1:5,000

Flow Cytometry (FCM): 1:2,000

Note: This product is for research use only.

Validation Data

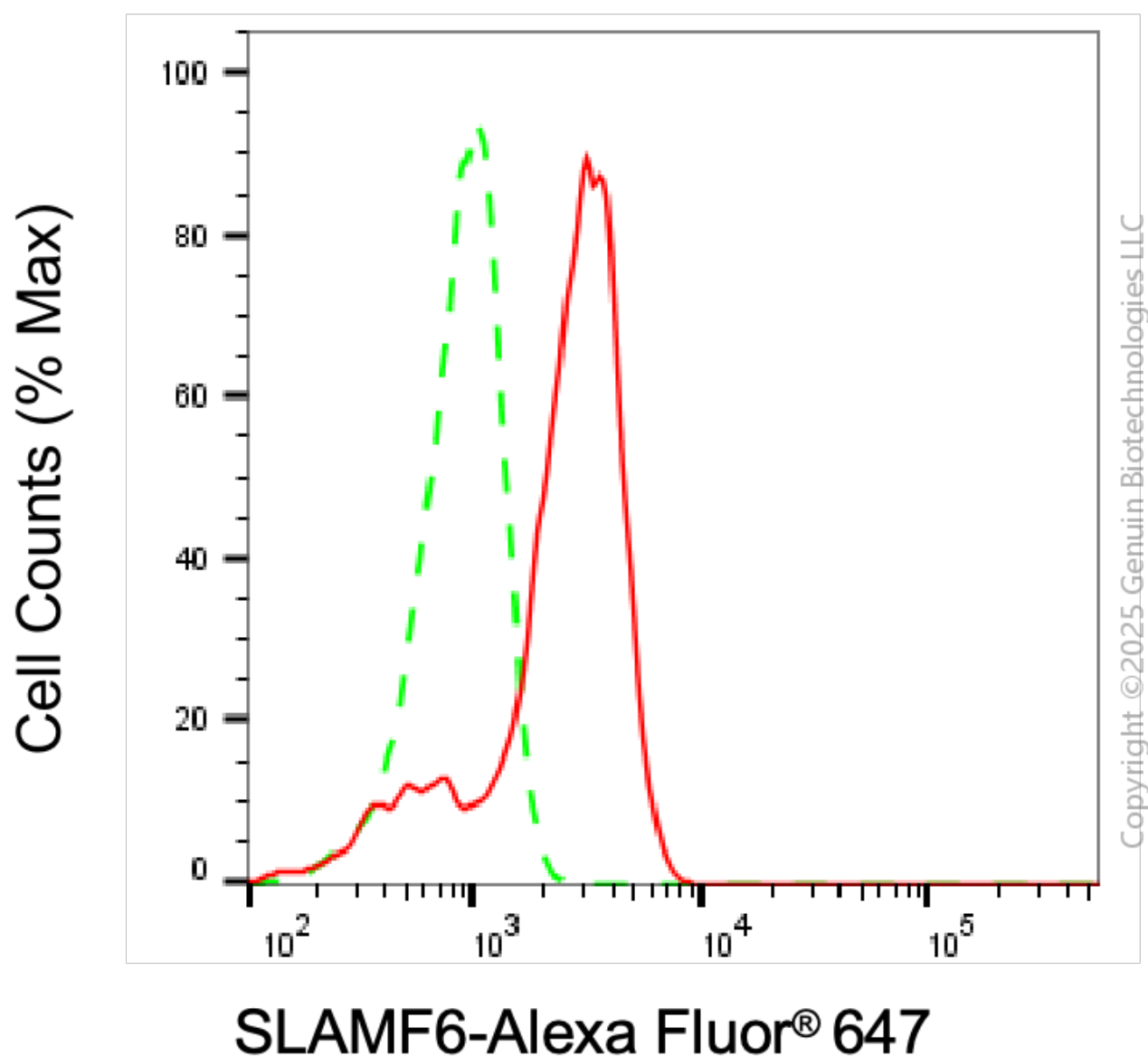
SUPPORT

SUPPORT@GENUINBIOTECH.COM
TEL: +1-540-855-7041

ORDERS

SALES@GENUINBIOTECH.COM
FAX: +1-540-855-7041

WWW.GENUINBIOTECH.COM



Flow cytometric analysis of SLAMF6 expression in Raji cells using anti-SLAMF6 antibody (Cat#3689, 1:2,000). Green, isotype control; red, SLAMF6.

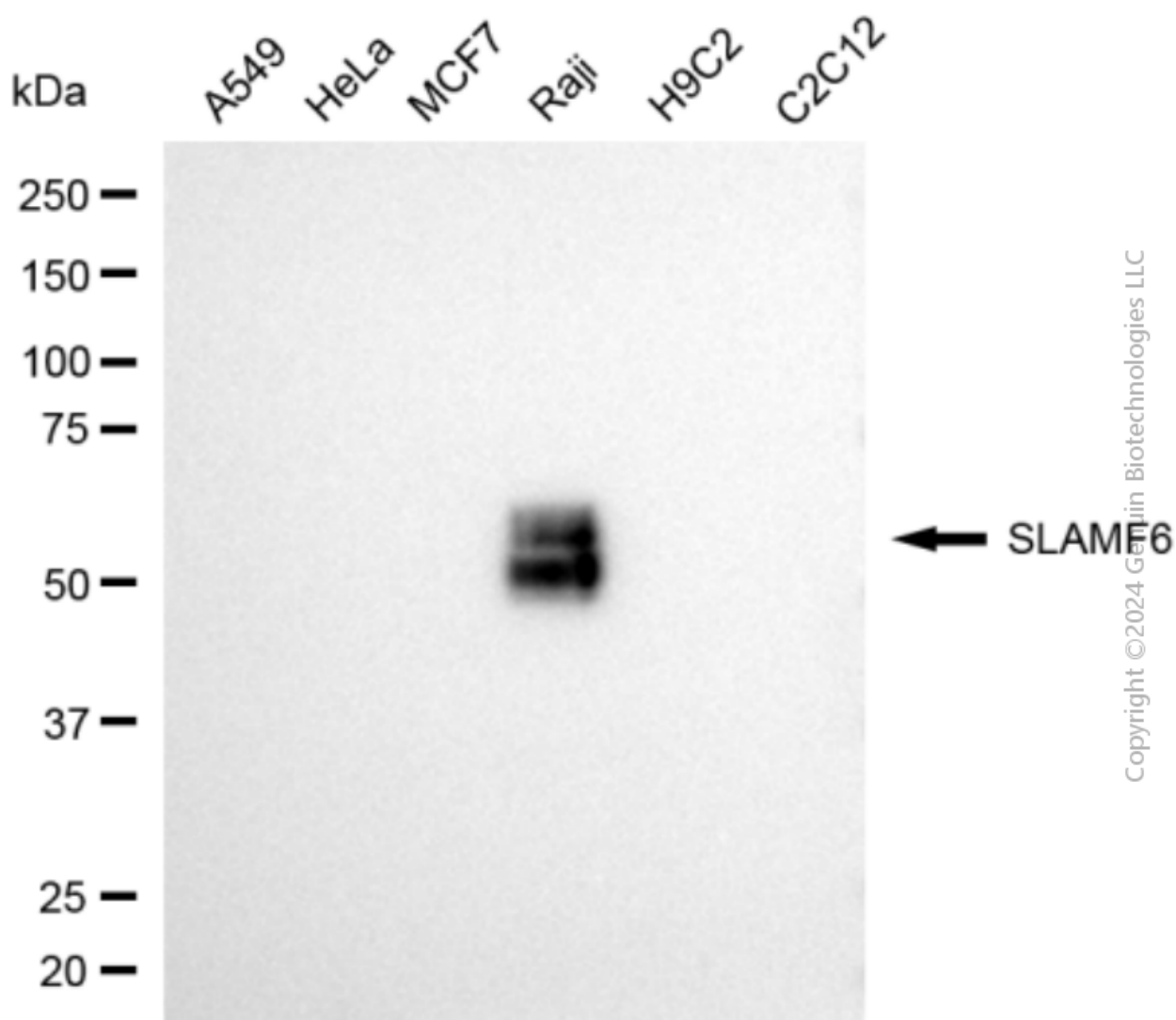
SUPPORT

SUPPORT@GENUINBIOTECH.COM
TEL: +1-540-855-7041

ORDERS

SALES@GENUINBIOTECH.COM
FAX: +1-540-855-7041

WWW.GENUINBIOTECH.COM



Western blotting analysis using anti-SLAMF6 antibody (Cat#3689). Total cell lysates (30 μ g) from various cell lines were loaded and separated by SDS-PAGE. The blot was incubated with anti-SLAMF6 antibody (Cat#3689, 1:5,000) and HRP-conjugated goat anti-rabbit secondary antibody (Cat#201, 1:20,000) respectively. Image was developed using FeQ™ ECL Substrate Kit (Cat#226).