

Anti-Chromogranin A Rabbit Monoclonal Antibody



Catalog #: 3696

Aliases

CHGA; Chromogranin A; PHE5; PHES; Parathyroid Secretory Protein 1; Pituitary Secretory Protein I; Chromogranin-A; SP-I; Betagranin (N-Terminal Fragment Of Chromogranin A); Pancreastatin; Chromofungin; Vasostatin; Parastatin; Catestatin; CGA; CgA

Background

Gene Name: CHGA

NCBI Gene Entry: [1113](#)

UniProt Entry: [P10645](#)

Application Information

Molecular Weight: Predicted, 51 kDa; observed, 90-120 kDa

Clonality: Rabbit monoclonal antibody

Clone ID: 24GB6955

Species Reactivity: Human, rat

Applications Tested: Western blotting (WB), flow cytometry (FCM), immunocytochemistry (IC)

Immunogen

Recombinant protein of human Chromogranin A

Isotype

Rabbit IgG

Storage Buffer

Supplied in PBS (pH 7.4) containing 50% glycerol, and 0.02% sodium azide.

Storage

Store at -20 °C for one year.

Recommended Dilutions

Western Blotting (WB): 1:1,000-1:5,000

Flow Cytometry (FCM): 1:2,000

Immunocytochemistry (IC): 1:100-1:1,000

Note: This product is for research use only.

SUPPORT

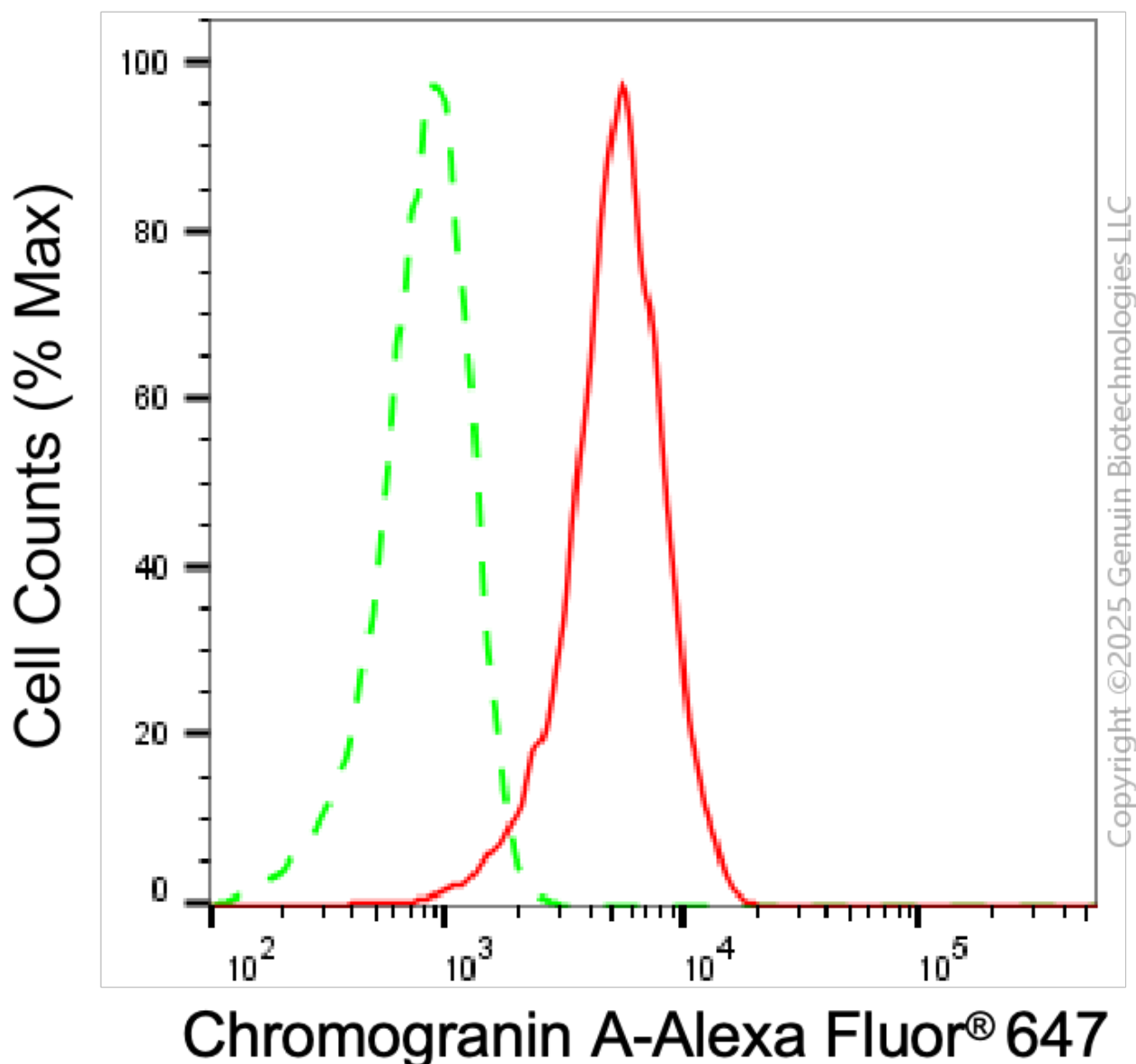
SUPPORT@GENUINBIOTECH.COM
TEL: +1-540-855-7041

ORDERS

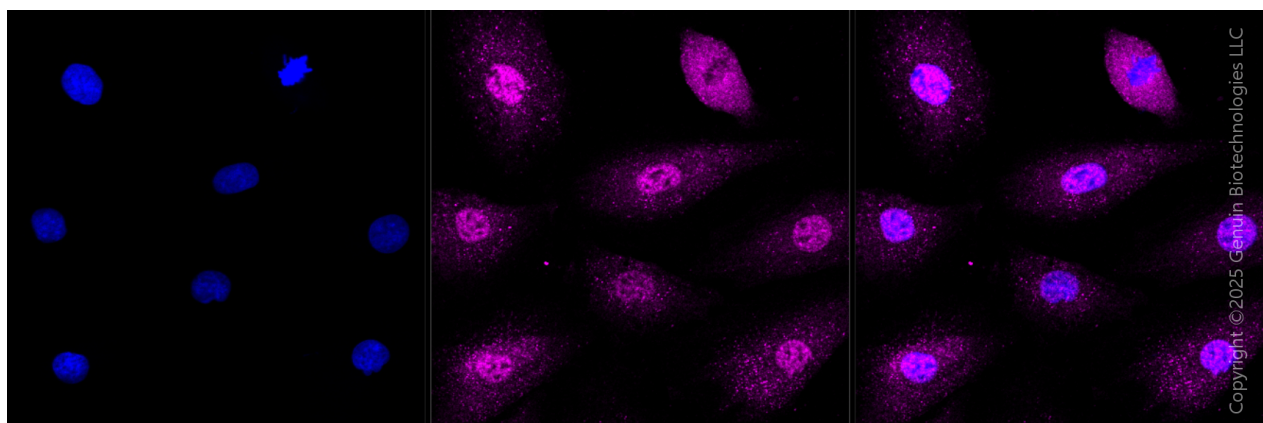
SALES@GENUINBIOTECH.COM
FAX: +1-540-855-7041

WWW.GENUINBIOTECH.COM

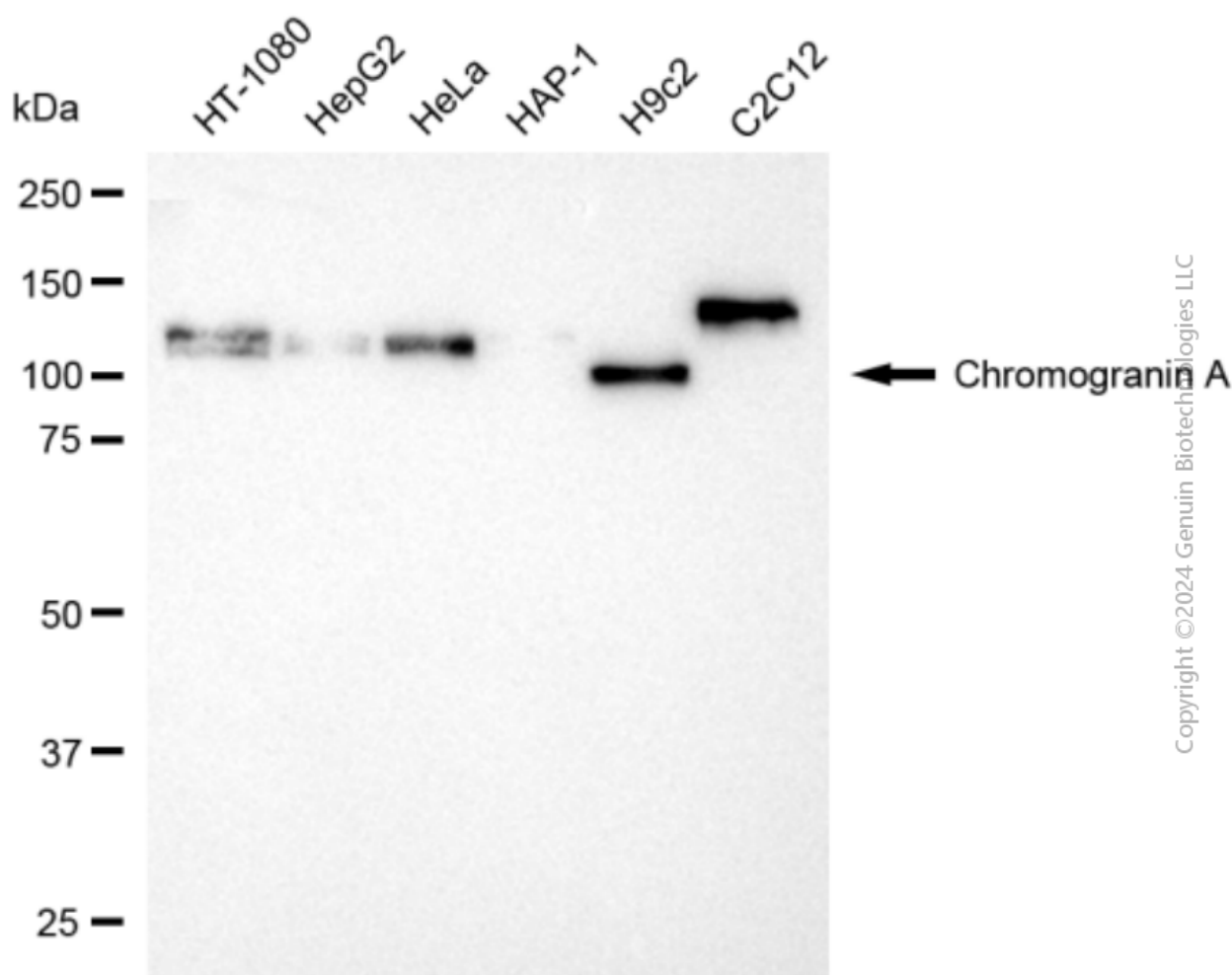
Validation Data



Flow cytometric analysis of Chromogranin A expression in H9c2 cells using anti-Chromogranin A antibody (Cat#3696, 1:2,000). Green, isotype control; red, Chromogranin A.



Immunocytochemical staining of H9C2 cells with anti-Chromogranin A antibody (Cat#3696, 1:1,000). Nuclei were stained blue with DAPI; Chromogranin A was stained magenta with Alexa Fluor® 647. Images were taken using Leica stellaris 5. Protein abundance based on laser Intensity and smart gain □ Medium. Scale bar, 20 μm.



Western blotting analysis using anti-chromogranin A antibody (Cat#3696). Total cell lysates (30 μg) from various cell lines were loaded and separated by SDS-PAGE. The blot was incubated with

Anti-Chromogranin A Rabbit Monoclonal Antibody

PAGE 4

anti-chromogranin A antibody (Cat#3696, 1:5,000) and HRP-conjugated goat anti-rabbit secondary antibody (Cat#201, 1:20,000) respectively. Image was developed using NaQ™ ECL Substrate Kit (Cat#716).

SUPPORT

SUPPORT@GENUINBIOTECH.COM
TEL: +1-540-855-7041

ORDERS

SALES@GENUINBIOTECH.COM
FAX: +1-540-855-7041

WWW.GENUINBIOTECH.COM