

Catalog #: 3699

Aliases

DLG2; Discs Large MAGUK Scaffold Protein 2; Chapsyn-110; PPP1R58; PSD-93; PSD93; Protein Phosphatase 1, Regulatory Subunit 58; Channel-Associated Protein Of Synapse-110; Postsynaptic Density Protein PSD-93; Disks Large Homolog 2; Discs, Large Homolog 2, Chapsyn-110 (Drosophila); Channel-Associated Protein Of Synapses, 110kDa; Discs, Large Homolog 2 (Drosophila); Discs, Large Homolog 2, Chapsyn-110; Discs Large Homolog 2

Background

Gene Name: DLG2

NCBI Gene Entry: [1740](#)

UniProt Entry: [Q15700](#)

Application Information

Molecular Weight: Predicted, 98 kDa; observed, 110 kDa

Clonality: Rabbit monoclonal antibody

Clone ID: 24GB6970

Species Reactivity: Human, mouse, rat

Applications Tested: Western blotting (WB), flow cytometry (FCM), immunocytochemistry (IC)

Immunogen

A synthesized peptide derived from human PSD93

Isotype

Rabbit IgG

Storage Buffer

Supplied in PBS (pH 7.4) containing 50% glycerol, and 0.02% sodium azide.

Storage

Store at -20 °C for one year.

Recommended Dilutions

Western Blotting (WB): 1:1,000-1:5,000

Flow Cytometry (FCM): 1:2,000

Immunocytochemistry (IC): 1:100-1:1,000

SUPPORT

SUPPORT@GENUINBIOTECH.COM
TEL: +1-540-855-7041

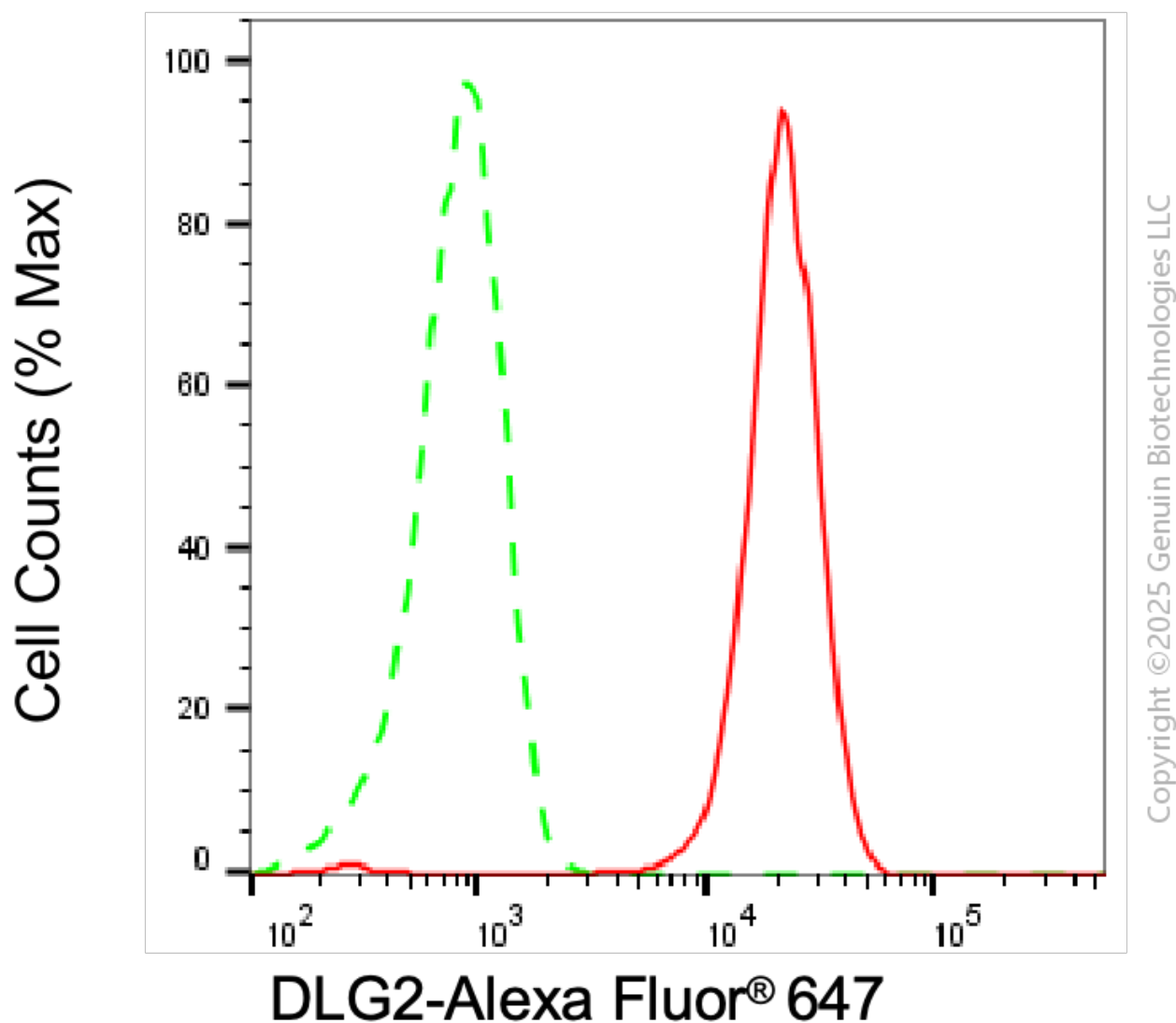
ORDERS

SALES@GENUINBIOTECH.COM
FAX: +1-540-855-7041

WWW.GENUINBIOTECH.COM

Note: This product is for research use only.

Validation Data



Flow cytometric analysis of DLG2 expression in H9c2 cells using anti-DLG2 antibody (Cat#3699, 1:2,000). Green, isotype control; red, DLG2.

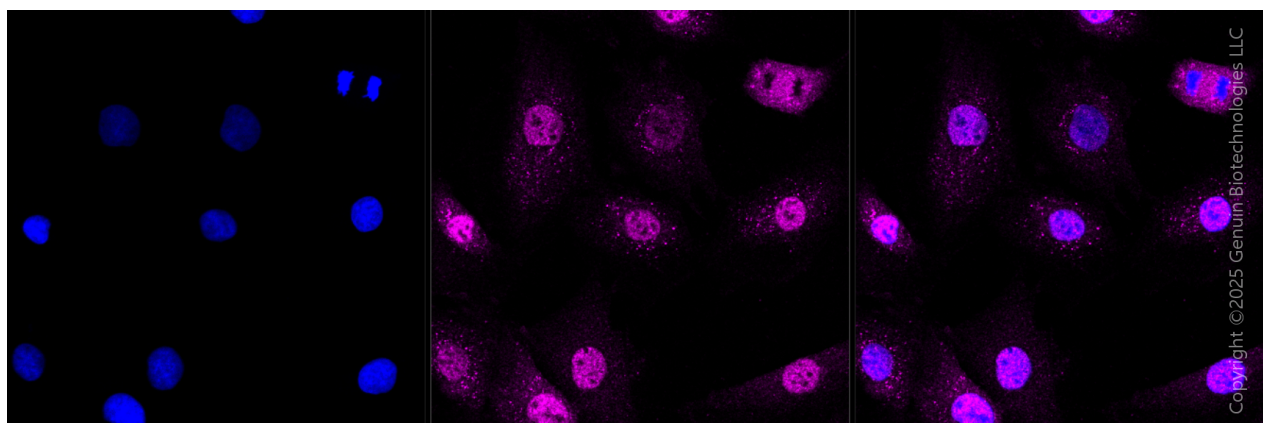
SUPPORT

SUPPORT@GENUINBIOTECH.COM
TEL: +1-540-855-7041

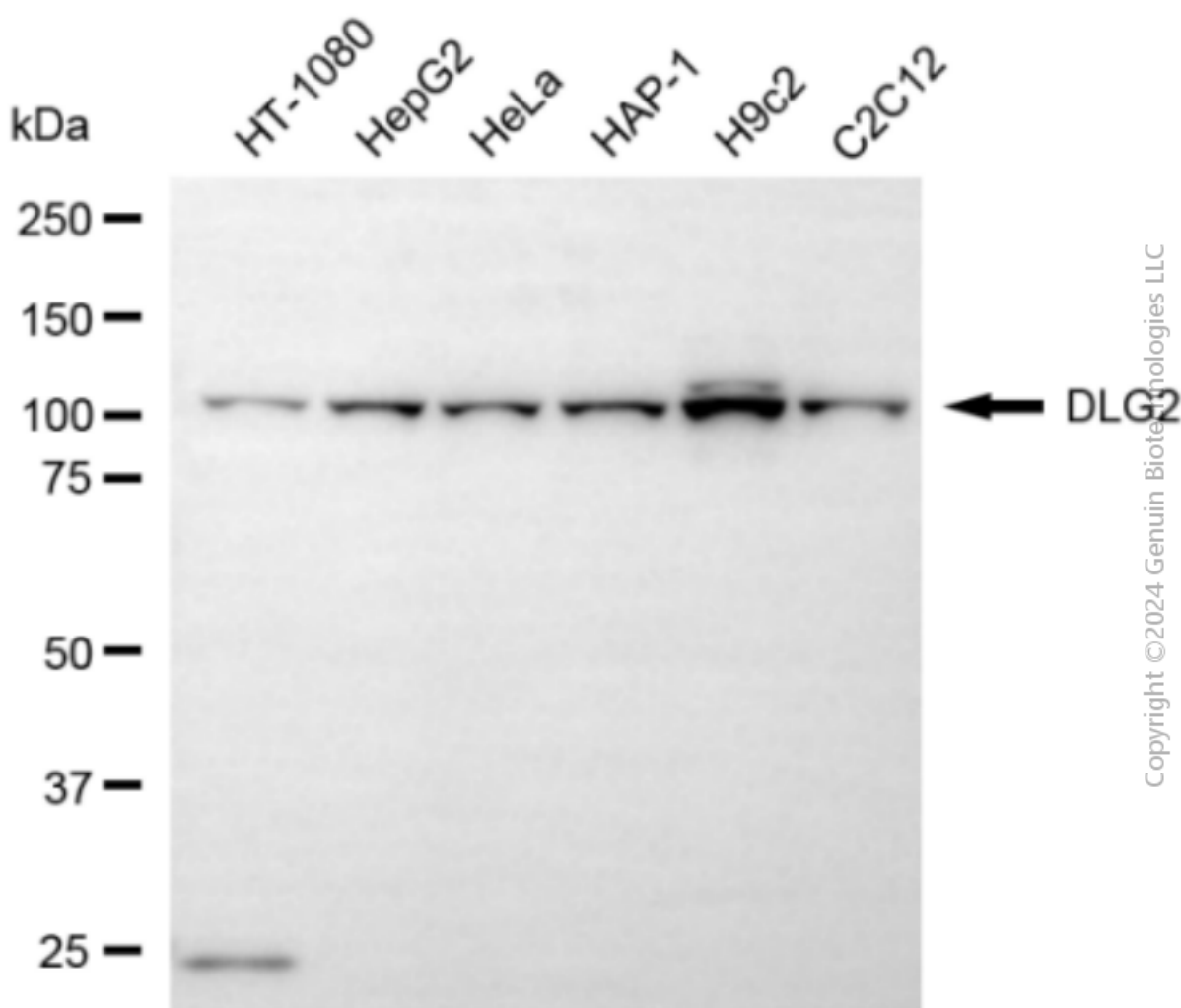
ORDERS

SALES@GENUINBIOTECH.COM
FAX: +1-540-855-7041

WWW.GENUINBIOTECH.COM



Immunocytochemical staining of H9C2 cells with anti-DLG2 antibody (Cat#3699, 1:1,000) . Nuclei were stained blue with DAPI; DLG2 was stained magenta with Alexa Fluor® 647. Images were taken using Leica stellaris 5. Protein abundance based on laser Intensity and smart gain□ Medium. Scale bar, 20 μm.

**SUPPORT**

SUPPORT@GENUINBIOTECH.COM
TEL: +1-540-855-7041

ORDERS

SALES@GENUINBIOTECH.COM
FAX: +1-540-855-7041

WWW.GENUINBIOTECH.COM

Western blotting analysis using anti-DLG2 antibody (Cat#3699). Total cell lysates (30 µg) from various cell lines were loaded and separated by SDS-PAGE. The blot was incubated with anti-DLG2 antibody (Cat#3699, 1:5,000) and HRP-conjugated goat anti-rabbit secondary antibody (Cat#201, 1:20,000) respectively. Image was developed using NaQ™ ECL Substrate Kit (Cat#716).