

Catalog #: 3703

Aliases

ALDH2; Aldehyde Dehydrogenase 2 Family Member; Aldehyde Dehydrogenase 2 Family (Mitochondrial); Aldehyde Dehydrogenase, Mitochondrial; ALDH Class 2; EC 1.2.1.3; ALDH-E2; ALDHI; ALDM; Nucleus-Encoded Mitochondrial Aldehyde Dehydrogenase 2; Epididymis Secretory Sperm Binding Protein; Acetaldehyde Dehydrogenase 2; Liver Mitochondrial ALDH; EC 1.2.1

Background

Gene Name: ALDH2

NCBI Gene Entry: [217](#)

UniProt Entry: [P05091](#)

Application Information

Molecular Weight: Predicted, 56 kDa; observed, 55 kDa

Clonality: Mouse monoclonal antibody

Clone ID: 24GB6990

Species Reactivity: Human, mouse, rat

Applications Tested: Western blotting (WB), flow cytometry (FCM), immunocytochemistry (IC)

Immunogen

Recombinant protein of human ALDH2

Isotype

Mouse IgG1 kappa

Storage Buffer

Supplied in PBS (pH 7.4) containing 50% glycerol, and 0.02% sodium azide.

Storage

Store at -20 °C for one year.

Recommended Dilutions

Western Blotting (WB): 1:2,500-1:5,000

Flow Cytometry (FCM): 1:2,000

Immunocytochemistry (IC): 1:100-1:1,000

SUPPORT

SUPPORT@GENUINBIOTECH.COM
TEL: +1-540-855-7041

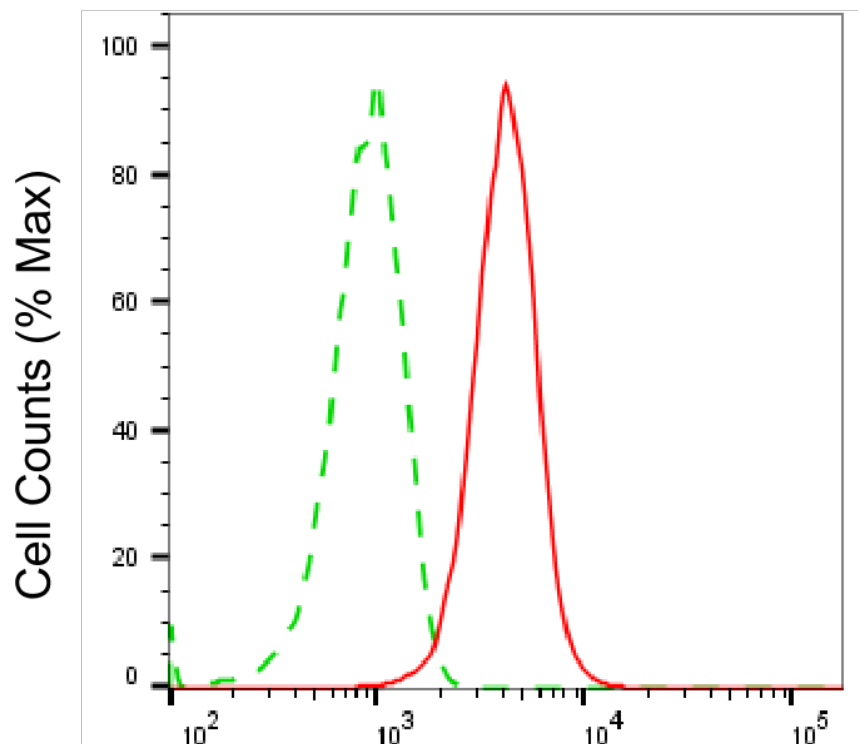
ORDERS

SALES@GENUINBIOTECH.COM
FAX: +1-540-855-7041

WWW.GENUINBIOTECH.COM

Note: This product is for research use only.

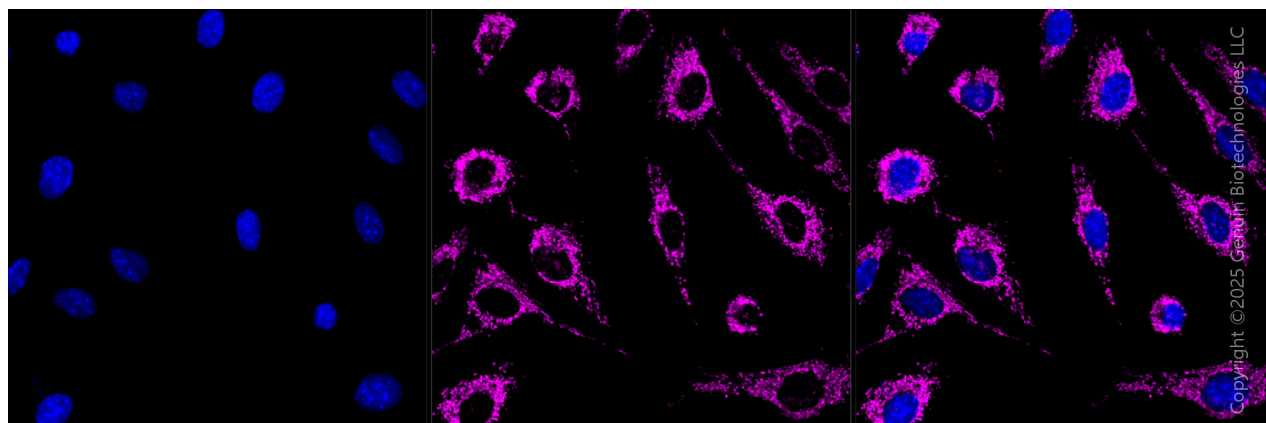
Validation Data



Copyright ©2025 Genuin Biotechnologies LLC

Aldehyde dehydrogenase 2 family member-Alexa Fluor® 647

Flow cytometric analysis of Aldehyde dehydrogenase 2 family member expression in HepG2 cells using anti-Aldehyde dehydrogenase 2 family member antibody (Cat#3703, 1:2,000). Green, isotype control; red, Aldehyde dehydrogenase 2 family member.



Copyright ©2025 Genuin Biotechnologies LLC

Immunocytochemical staining of C2C12 cells with anti-Aldehyde dehydrogenase 2 family member antibody (Cat#3703, 1:1,000). Nuclei were stained blue with DAPI; Aldehyde dehydrogenase 2 family member was stained magenta with Alexa Fluor® 647. Images were taken

SUPPORT

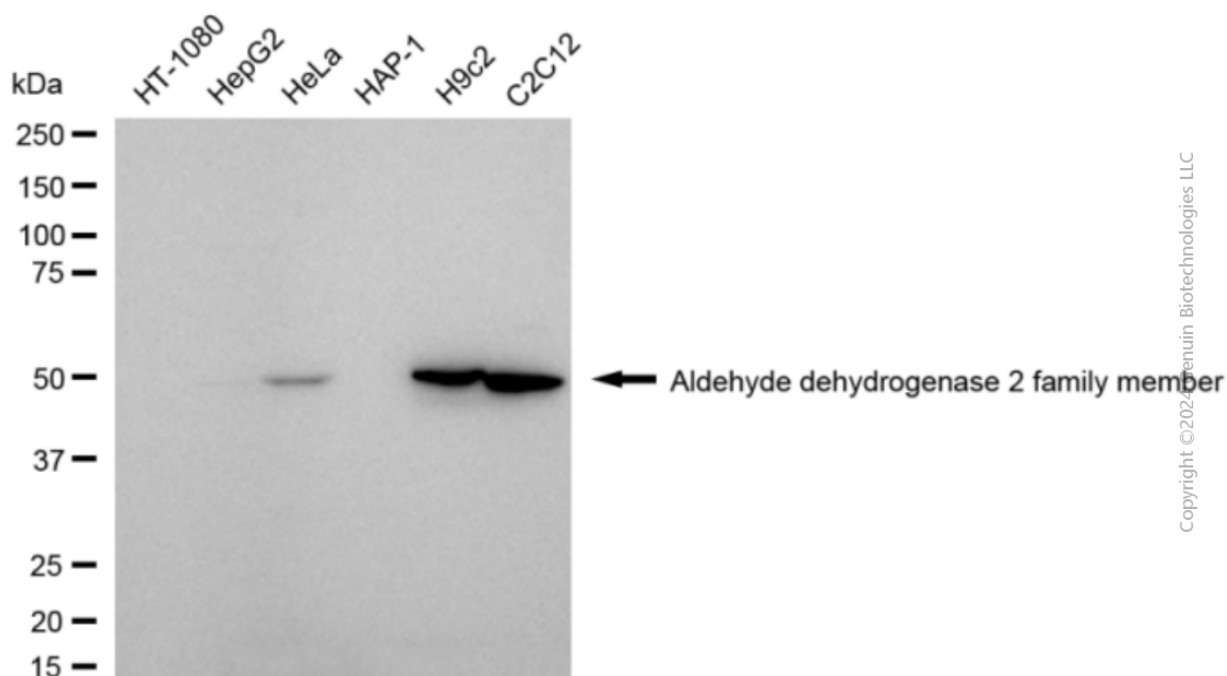
SUPPORT@GENUINBIOTECH.COM
TEL: +1-540-855-7041

ORDERS

SALES@GENUINBIOTECH.COM
FAX: +1-540-855-7041

WWW.GENUINBIOTECH.COM

using Leica stellaris 5. Protein abundance based on laser Intensity and smart gain: High. Scale bar, 20 μ m.



Western blotting analysis using anti-aldehyde dehydrogenase 2 family member antibody (Cat#3703). Total cell lysates (30 μ g) from various cell lines were loaded and separated by SDS-PAGE. The blot was incubated with anti-aldehyde dehydrogenase 2 family member antibody (Cat#3703, 1:5,000) and HRP-conjugated goat anti-mouse secondary antibody (Cat#101, 1:20,000) respectively. Image was developed using FeQTM ECL Substrate Kit (Cat#226).