

Catalog #: 3704

Aliases

FYN; FYN Proto-Oncogene, Src Family Tyrosine Kinase; SLK; SYN; FYN Oncogene Related To SRC, FGR, YES; Tyrosine-Protein Kinase Fyn; Proto-Oncogene C-Fyn; Proto-Oncogene Syn; Src-Like Kinase; EC 2.7.10.2; MGC45350; OKT3-Induced Calcium Influx Regulator; Tyrosine Kinase P59fyn(T); Src/Yes-Related Novel; C-Syn Protooncogene; EC 2.7.10; P59-FYN; P59-Fyn

Background

Gene Name: FYN

NCBI Gene Entry: [2534](#)

UniProt Entry: [P06241](#)

Application Information

Molecular Weight: Predicted, 61 kDa; observed, 61 kDa

Clonality: Mouse monoclonal antibody

Clone ID: 24GB6995

Species Reactivity: Human

Applications Tested: Western blotting (WB), flow cytometry (FCM), immunocytochemistry (IC)

Immunogen

Recombinant protein of human FYN

Isotype

Mouse IgG1 kappa

Storage Buffer

Supplied in PBS (pH 7.4) containing 50% glycerol, and 0.02% sodium azide.

Storage

Store at -20 °C for one year.

Recommended Dilutions

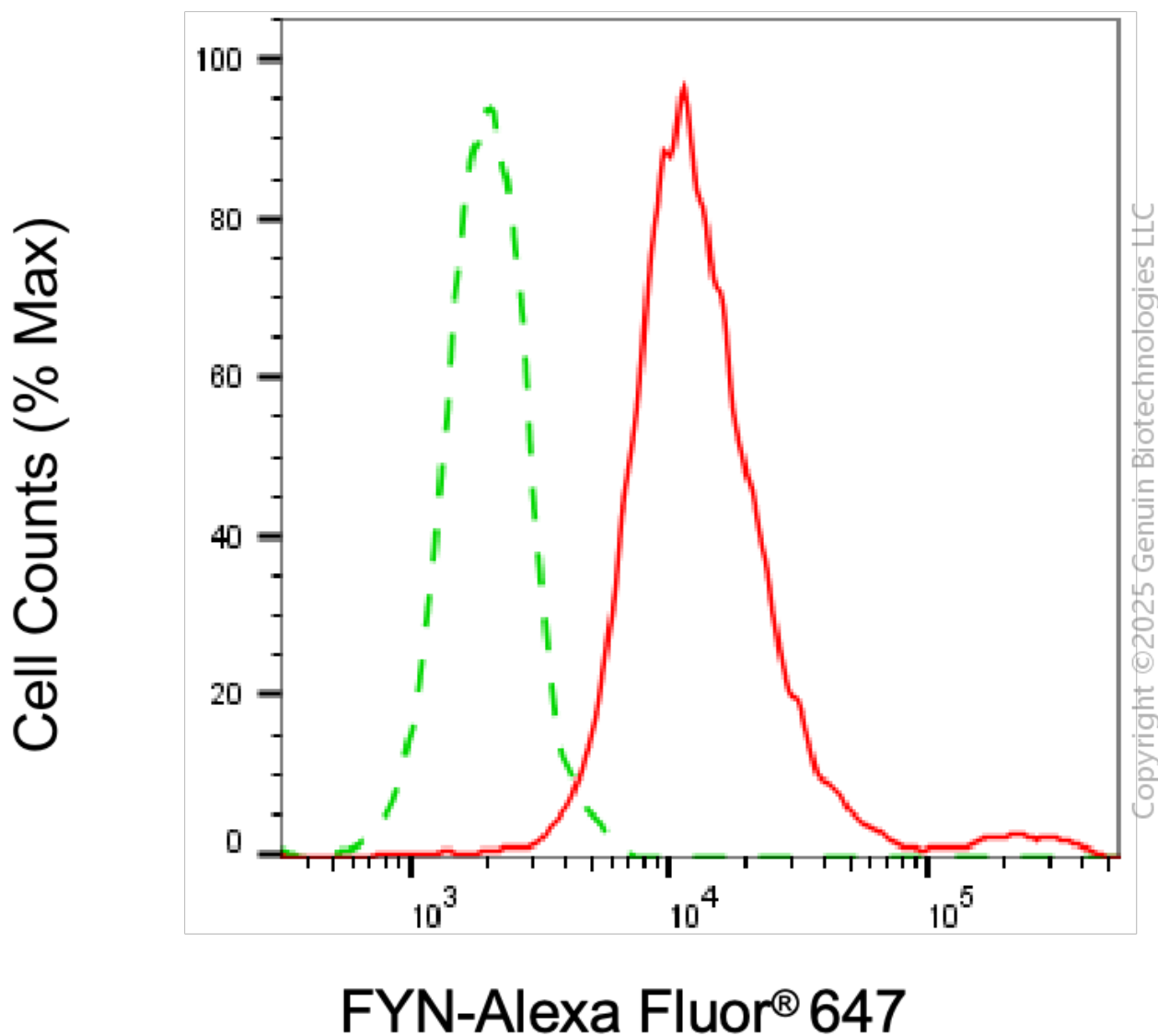
Western Blotting (WB): 1:2,500-1:5,000

Flow Cytometry (FCM): 1:2,000

Immunocytochemistry (IC): 1:100-1:1,000

Note: This product is for research use only.

Validation Data



Flow cytometric analysis of FYN expression in HeLa cells using anti-FYN antibody (Cat#3704, 1:2,000). Green, isotype control; red, FYN.

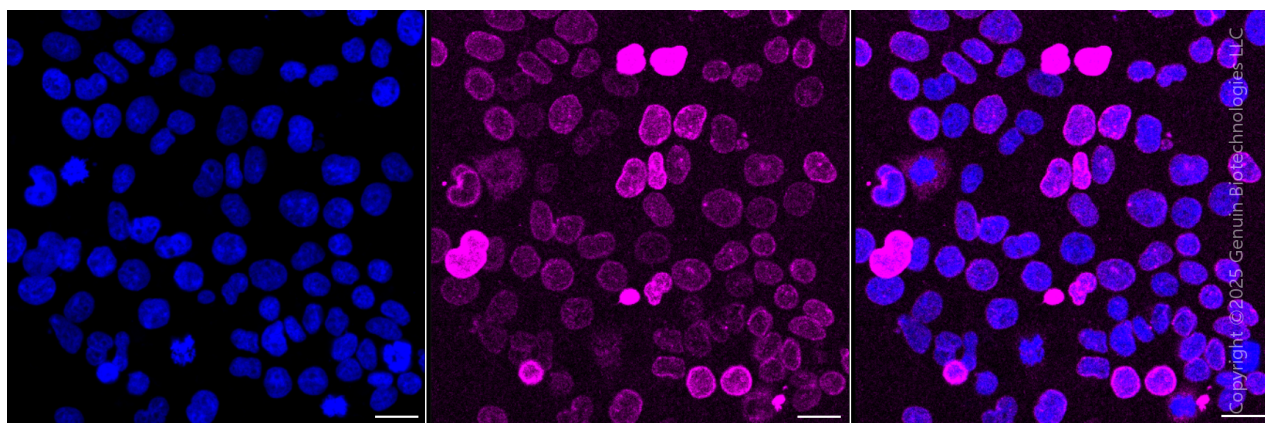
SUPPORT

SUPPORT@GENUINBIOTECH.COM
TEL: +1-540-855-7041

ORDERS

SALES@GENUINBIOTECH.COM
FAX: +1-540-855-7041

WWW.GENUINBIOTECH.COM



Immunocytochemical staining of HeLa cells with anti-FYN antibody (Cat#3704, 1:1,000) . Nuclei were stained blue with DAPI; FYN was stained magenta with Alexa Fluor® 647. Images were taken using Leica stellaris 5. Protein abundance based on laser Intensity and Smart Gain□Low. Scale bar, 20 μ m.

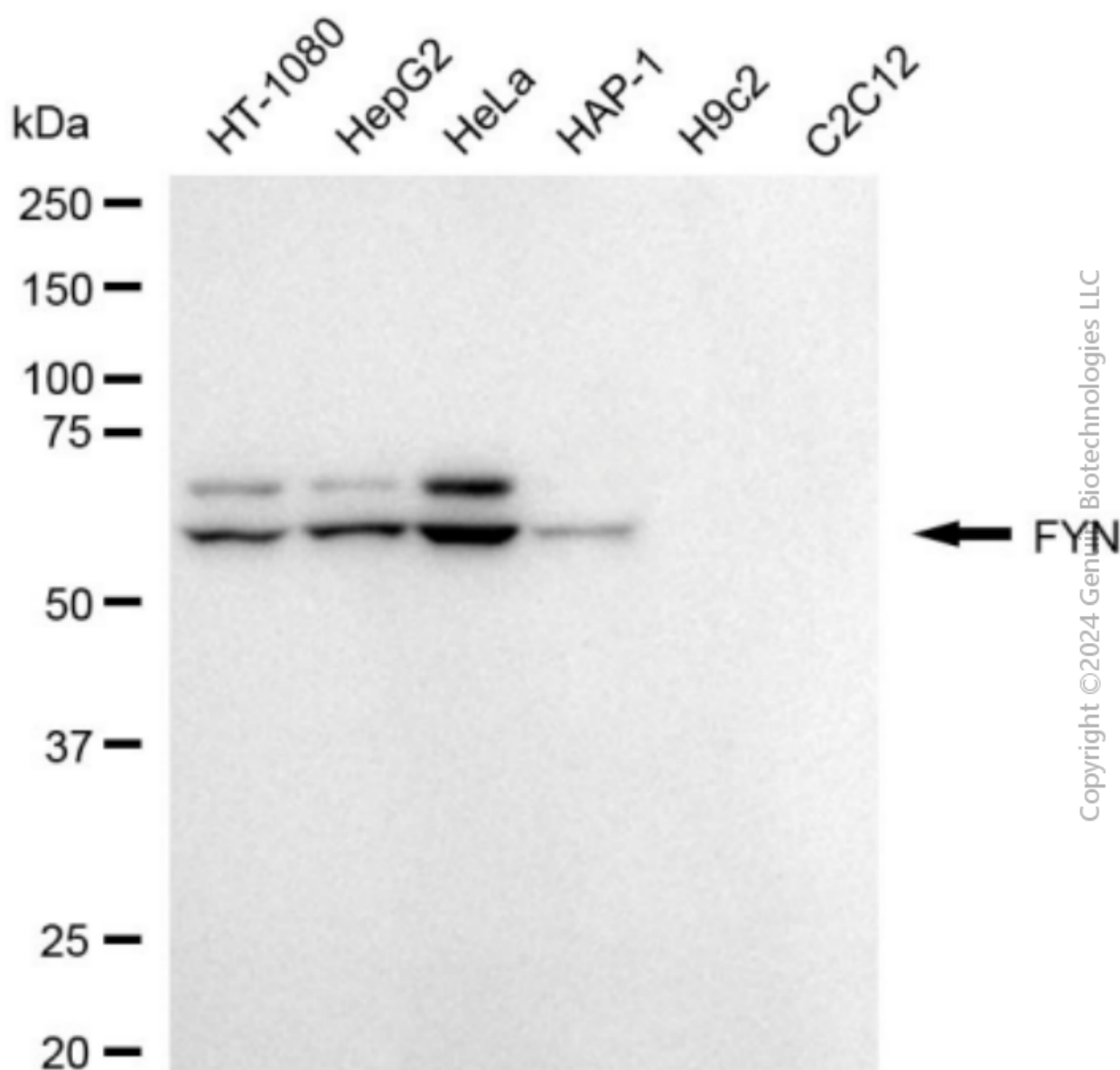
SUPPORT

SUPPORT@GENUINBIOTECH.COM
TEL: +1-540-855-7041

ORDERS

SALES@GENUINBIOTECH.COM
FAX: +1-540-855-7041

WWW.GENUINBIOTECH.COM



Western blotting analysis using anti-FYN antibody (Cat#3704). Total cell lysates (30 μ g) from various cell lines were loaded and separated by SDS-PAGE. The blot was incubated with anti-FYN antibody (Cat#3704, 1:5,000) and HRP-conjugated goat anti-mouse secondary antibody (Cat#101, 1:20,000) respectively. Image was developed using FeQ™ ECL Substrate Kit (Cat#226).