

## Catalog #: 3708

### Aliases

TBP; TATA-Box Binding Protein; TFIID; GTF2D1; TBP1; Transcription Initiation Factor TFIID TBP Subunit; TATA Sequence-Binding Protein; TATA-Box-Binding Protein; TATA-Box Factor; SCA17; TATA-Box Binding Protein N-Terminal Domain; Spinocerebellar Ataxia 17; TATA-Binding Factor; GTF2D; HDL4; TF2D

### Background

Gene Name: TBP

NCBI Gene Entry: [6908](#)

UniProt Entry: [P20226](#)

### Application Information

Molecular Weight: Predicted, 38 kDa; observed, 38 kDa

Clonality: Mouse monoclonal antibody

Clone ID: 24GB7015

Species Reactivity: Human

Applications Tested: Western blotting (WB), flow cytometry (FCM), immunocytochemistry (IC)

### Immunogen

Recombinant protein of human TBP

### Isotype

Mouse IgG1

### Storage Buffer

Supplied in PBS (pH 7.4) containing 50% glycerol, and 0.02% sodium azide.

### Storage

Store at -20 °C for one year.

### Recommended Dilutions

Western Blotting (WB): 1:2,500-1:5,000

Flow Cytometry (FCM): 1:2,000

Immunocytochemistry (IC): 1:100-1:1,000

---

#### SUPPORT

SUPPORT@GENUINBIOTECH.COM  
TEL: +1-540-855-7041

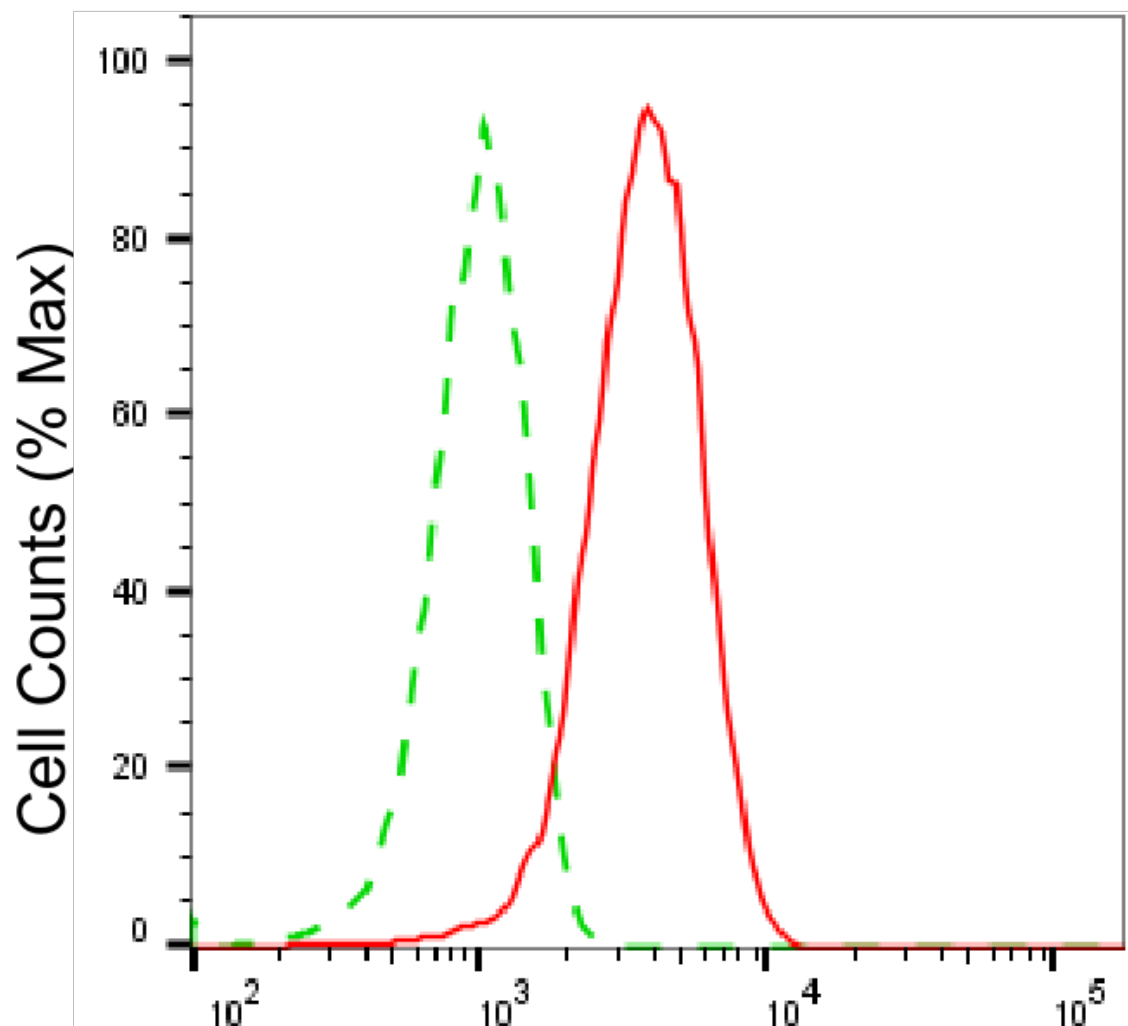
#### ORDERS

SALES@GENUINBIOTECH.COM  
FAX: +1-540-855-7041

[WWW.GENUINBIOTECH.COM](http://WWW.GENUINBIOTECH.COM)

**Note:** This product is for research use only.

## Validation Data



Copyright ©2025 Genuin Biotechnologies LLC

## TATA-box binding protein-Alexa Fluor® 647

Flow cytometric analysis of TATA-box binding protein expression in HAP-1 cells using anti-TATA-box binding protein antibody (Cat#3708, 1:2,000). Green, isotype control; red, TATA-box binding protein.

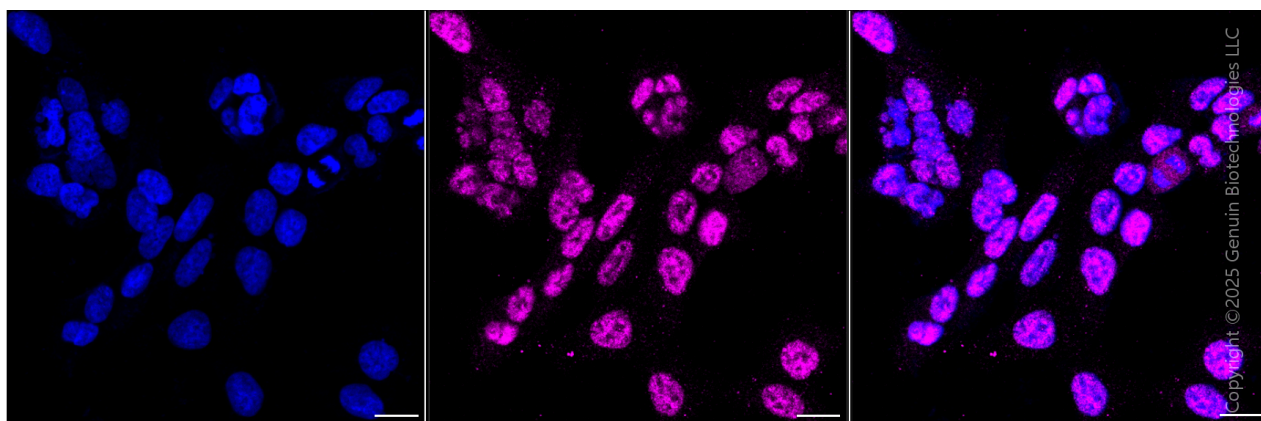
### SUPPORT

SUPPORT@GENUINBIOTECH.COM  
TEL: +1-540-855-7041

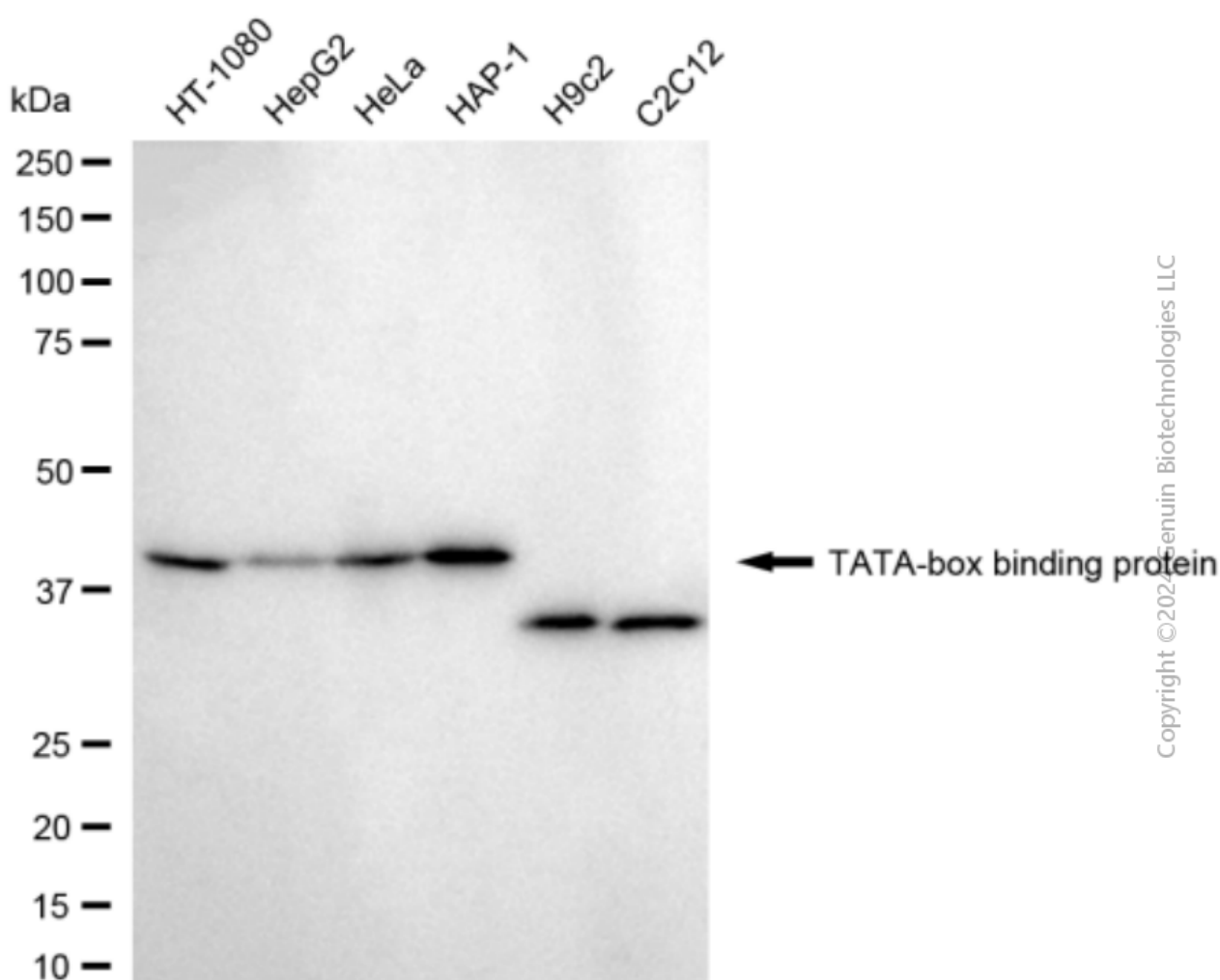
### ORDERS

SALES@GENUINBIOTECH.COM  
FAX: +1-540-855-7041

[WWW.GENUINBIOTECH.COM](http://WWW.GENUINBIOTECH.COM)



Immunocytochemical staining of HAP1 cells with anti-TATA-box binding protein antibody (Cat#3708, 1:1,000). Nuclei were stained blue with DAPI; TATA-box binding protein was stained magenta with Alexa Fluor® 647. Images were taken using Leica stellaris 5. Protein abundance based on laser Intensity and smart gain: Medium. Scale bar, 20  $\mu$ m.



lysates (30 µg) from various cell lines were loaded and separated by SDS-PAGE. The blot was incubated with anti-TATA-box binding protein antibody (Cat#3708, 1:5,000) and HRP-conjugated goat anti-mouse secondary antibody (Cat#101, 1:20,000) respectively. Image was developed using FeQ™ ECL Substrate Kit (Cat#226).