

## Catalog #: 3711

### Aliases

SOX2; SRY-Box Transcription Factor 2; SRY (Sex Determining Region Y)-Box 2; Transcription Factor SOX-2; SRY-Box 2; Sex Determining Region Y-Box 2; SRY-Related HMG-Box Gene 2; Transcription Factor SOX2; MCOPS3; ANOP3

### Background

Gene Name: SOX2

NCBI Gene Entry: [6657](#)

UniProt Entry: [P48431](#)

### Application Information

Molecular Weight: Predicted, 34 kDa; observed, 34 kDa

Clonality: Mouse monoclonal antibody

Clone ID: 24GB7030

Species Reactivity: Human

Applications Tested: Western blotting (WB), flow cytometry (FCM), immunocytochemistry (IC)

### Immunogen

Recombinant protein of human SOX2

### Isotype

Mouse IgG1

### Storage Buffer

Supplied in PBS (pH 7.4) containing 50% glycerol, and 0.02% sodium azide.

### Storage

Store at -20 °C for one year.

### Recommended Dilutions

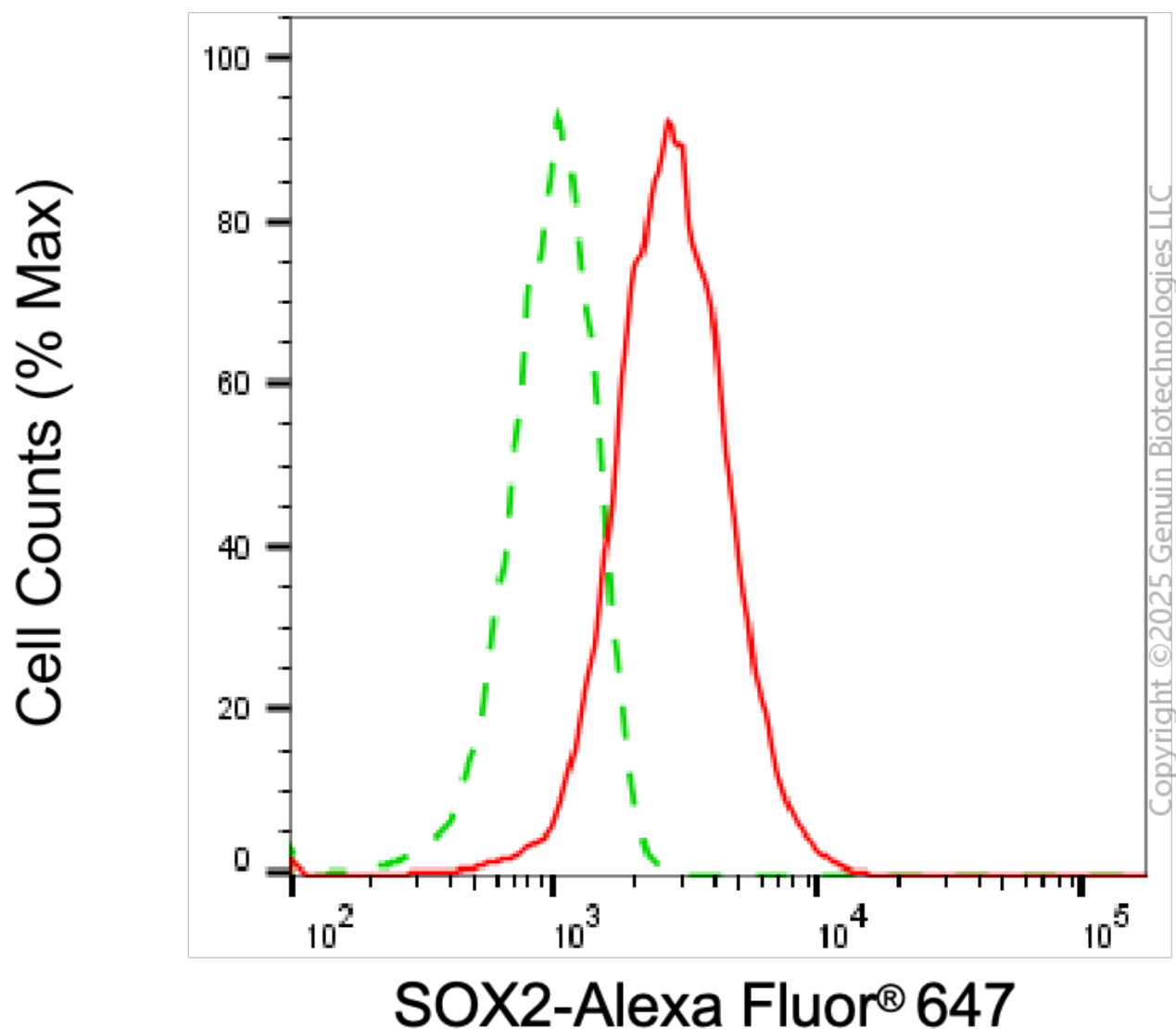
Western Blotting (WB): 1:2,500-1:5,000

Flow Cytometry (FCM): 1:2,000

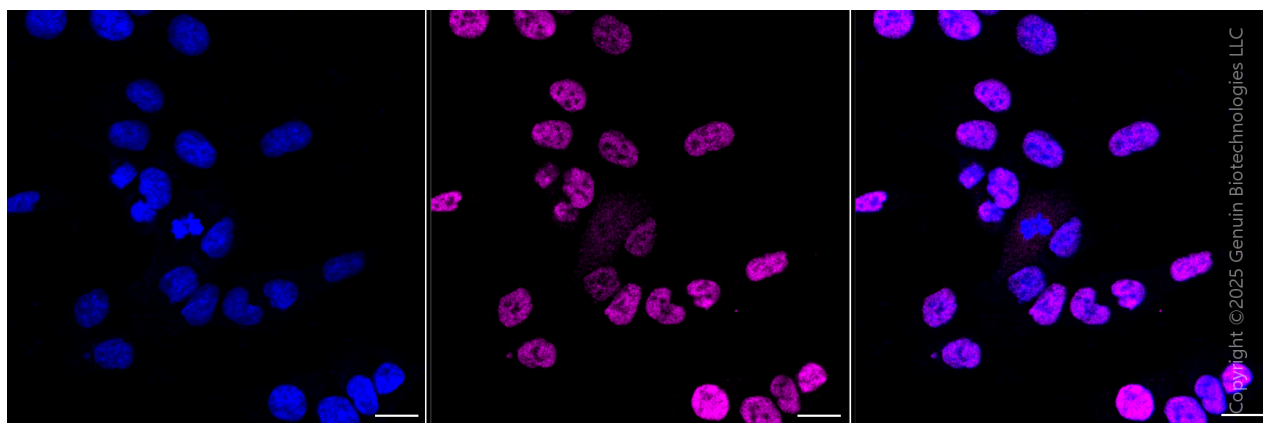
Immunocytochemistry (IC): 1:100-1:1,000

**Note:** This product is for research use only.

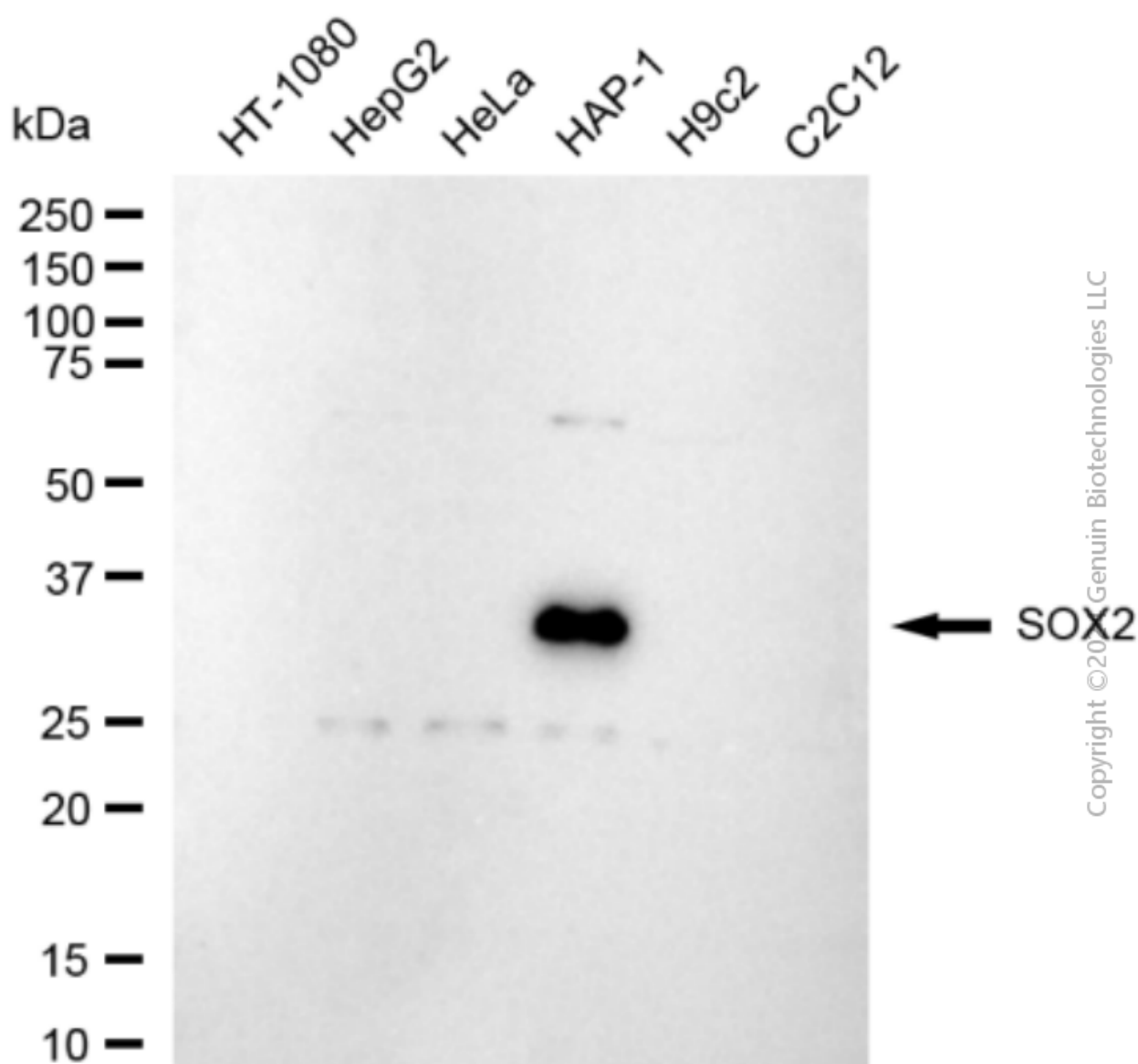
## Validation Data



Flow cytometric analysis of SOX2 expression in HAP-1 cells using anti-SOX2 antibody (Cat#3711, 1:2,000). Green, isotype control; red, SOX2.



Immunocytochemical staining of HAP-1 cells with anti-SOX2 antibody (Cat#3711, 1:1,000) . Nuclei were stained blue with DAPI; SOX2 was stained magenta with Alexa Fluor® 647. Images were taken using Leica stellaris 5. Protein abundance based on laser Intensity and Smart Gain□ High. Scale bar, 20  $\mu$ m.



Western blotting analysis using anti-SOX2 antibody (Cat#3711). Total cell lysates (30  $\mu$ g) from various cell lines were loaded and separated by SDS-PAGE. The blot was incubated with anti-SOX2 antibody (Cat#3711, 1:5,000) and HRP-conjugated goat anti-mouse secondary antibody (Cat#101, 1:20,000) respectively. Image was developed using NaQ™ ECL Substrate Kit (Cat#716).