

Anti-MDM2 Proto-Oncogene Mouse Monoclonal Antibody



Catalog #: 3716

Aliases

MDM2; MDM2 Proto-Oncogene; HDM2; MDM2 Proto-Oncogene, E3 Ubiquitin Protein Ligase; E3 Ubiquitin-Protein Ligase Mdm2; Oncoprotein Mdm2; MGC5370; Mdm2, Transformed 3T3 Cell Double Minute 2, P53 Binding Protein (Mouse); Mdm2, Transformed 3T3 Cell Double Minute 2, P53 Binding Protein; Mouse Double Minute 2, Human Homolog Of; P53-Binding Protein; Double Minute 2, Human Homolog Of; P53-Binding Protein; Mdm2, P53 E3 Ubiquitin Protein Ligase Homolog; MDM2 Oncogene, E3 Ubiquitin Protein Ligase; Mdm2 P53 Binding Protein Homolog (Mouse); RING-Type E3 Ubiquitin Transferase Mdm2; P53-Binding Protein Mdm2; Double Minute 2 Protein; EC 2.3.2.27; EC 6.3.2; ACTFS; HDMX; LSKB; Hdm2

Background

Gene Name: MDM2

NCBI Gene Entry: [4193](#)

UniProt Entry: [Q00987](#)

Application Information

Molecular Weight: Predicted, 55 kDa; observed, 60 kDa

Clonality: Mouse monoclonal antibody

Clone ID: 24GB7055

Species Reactivity: Human, mouse, rat

Applications Tested: Western blotting (WB), flow cytometry (FCM), immunocytochemistry (IC)

Immunogen

Recombinant protein of human MDM2

Isotype

Mouse IgG1 kappa

Storage Buffer

Supplied in PBS (pH 7.4) containing 50% glycerol, and 0.02% sodium azide.

Storage

Store at -20 °C for one year.

Recommended Dilutions

Western Blotting (WB): 1:2,500-1:5,000

SUPPORT

SUPPORT@GENUINBIOTECH.COM
TEL: +1-540-855-7041

ORDERS

SALES@GENUINBIOTECH.COM
FAX: +1-540-855-7041

WWW.GENUINBIOTECH.COM

Anti-MDM2 Proto-Oncogene Mouse Monoclonal Antibody

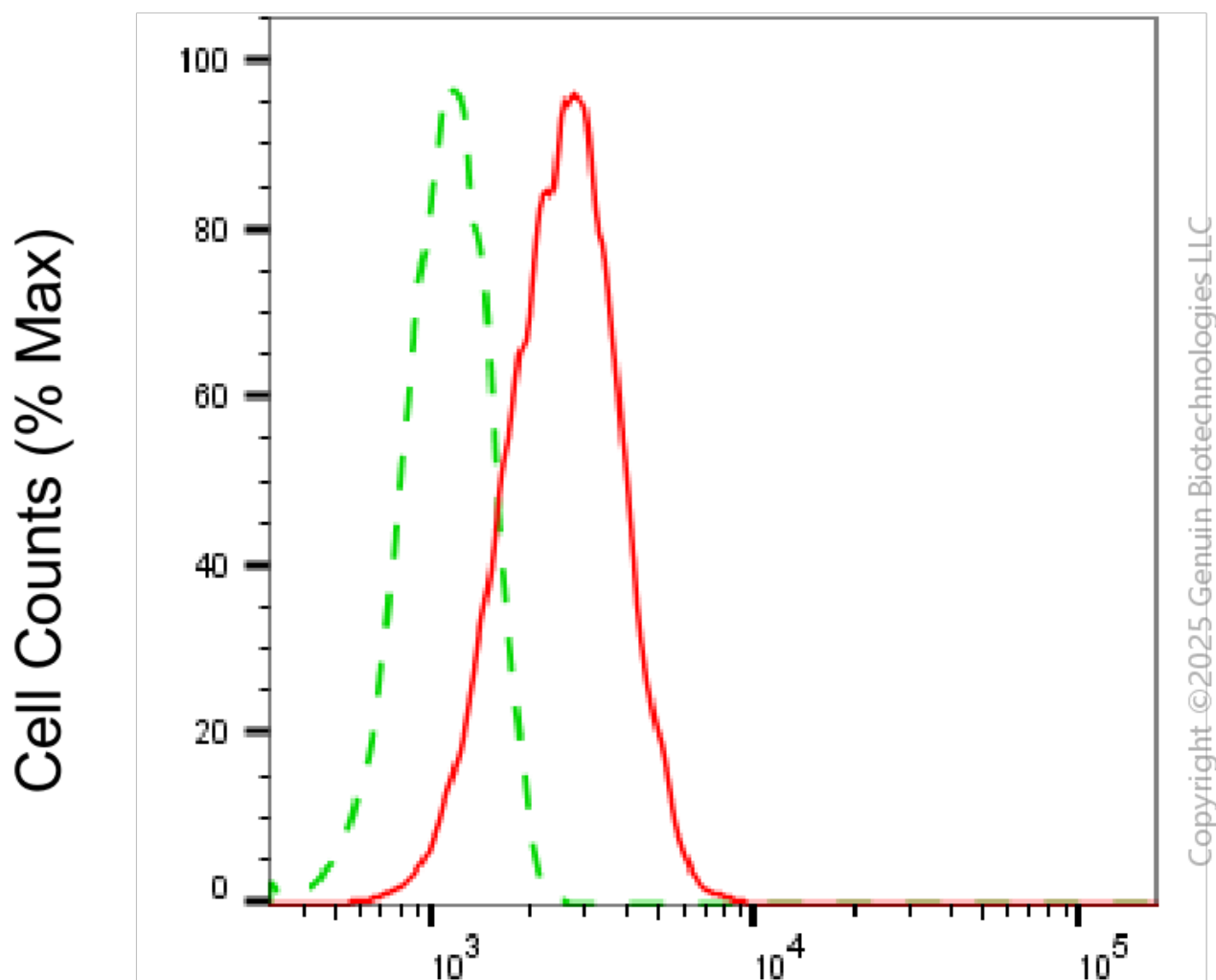
PAGE 2

Flow Cytometry (FCM): 1:2,000

Immunocytochemistry (IC): 1:100-1:1,000

Note: This product is for research use only.

Validation Data



MDM2-Alexa Fluor® 647

Flow cytometric analysis of MDM2 expression in C2C12 cells using anti-MDM2 antibody (Cat#3716, 1:2,000). Green, isotype control; red, MDM2.

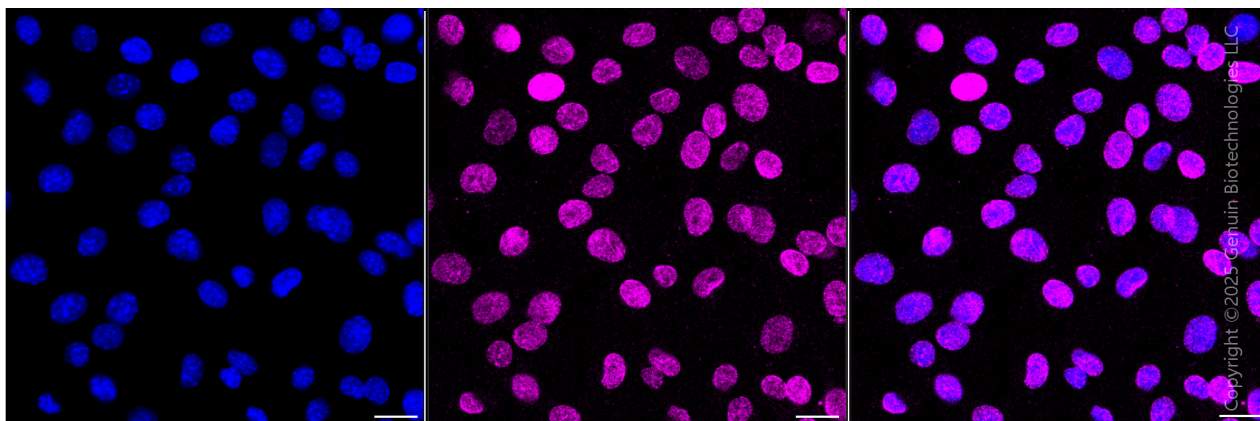
SUPPORT

SUPPORT@GENUINBIOTECH.COM
TEL: +1-540-855-7041

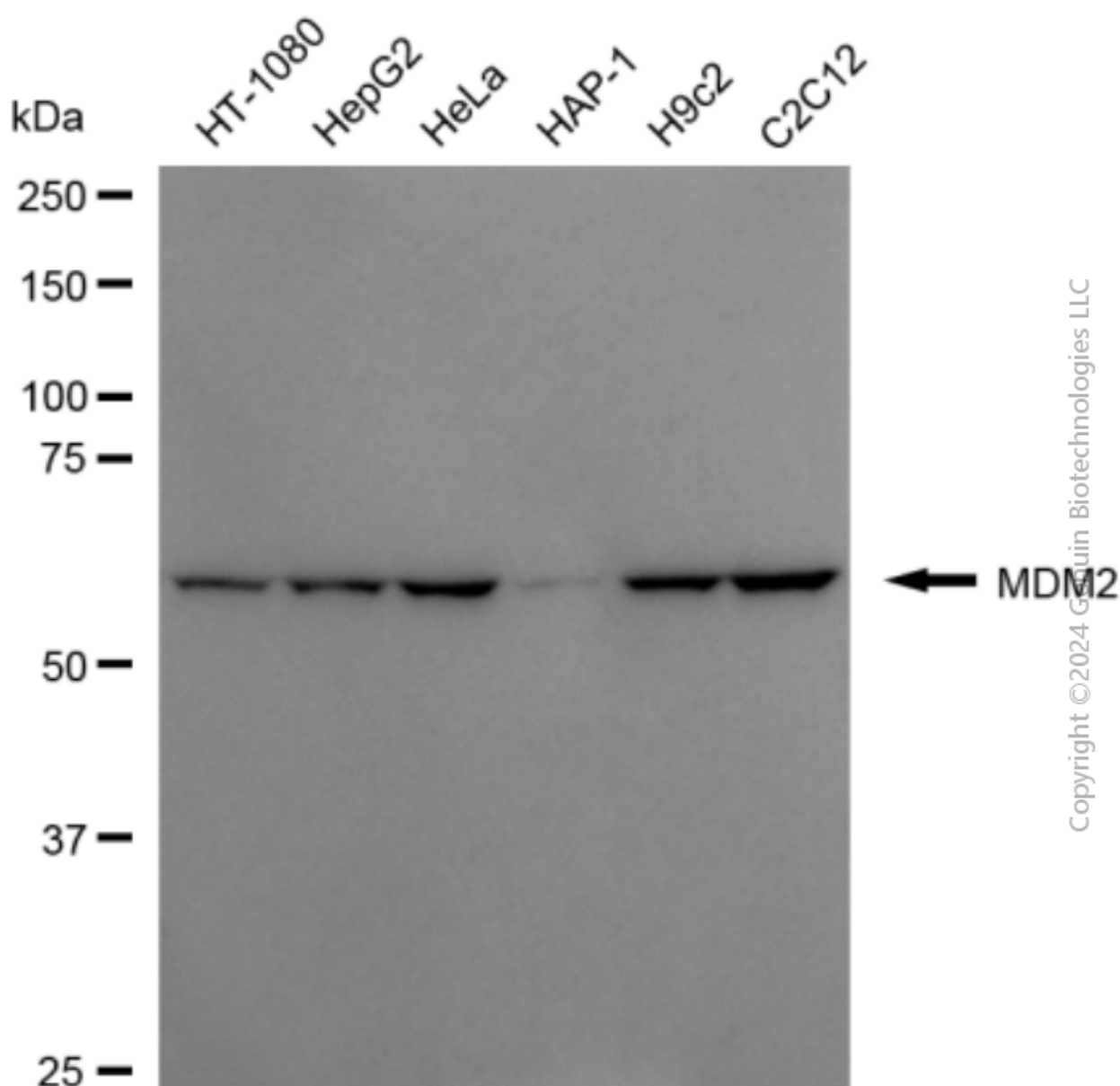
ORDERS

SALES@GENUINBIOTECH.COM
FAX: +1-540-855-7041

WWW.GENUINBIOTECH.COM



Immunocytochemical staining of C2C12 cells with anti-MDM2 antibody (Cat#3716, 1:1,000) . Nuclei were stained blue with DAPI;MDM2 was stained magenta with Alexa Fluor® 647. Images were taken using Leica stellaris 5. Protein abundance based on laser Intensity and smart gain: Medium. Scale bar, 20 μ m.



Western blotting analysis using anti-MDM2 antibody (Cat#3716). Total cell lysates (30 μ g) from various cell lines were loaded and separated by SDS-PAGE. The blot was incubated with anti-MDM2 antibody (Cat#3716, 1:5,000) and HRP-conjugated goat anti-mouse secondary antibody (Cat#101, 1:20,000) respectively. Image was developed using FeQ™ ECL Substrate Kit (Cat#226).