

Anti-MYB Binding Protein 1a Mouse Monoclonal Antibody



Catalog #: 3720

Aliases

MYBBP1A; MYB Binding Protein 1a; P160; PAP2; Pol5; MYB Binding Protein (P160) 1a; P53-Activated Protein-2; Myb-Binding Protein 1A; FLJ37886

Background

Gene Name: MYBBP1A

NCBI Gene Entry: [10514](#)

UniProt Entry: [Q9BQG0](#)

Application Information

Molecular Weight: Predicted, 149 kDa; observed, 149 kDa

Clonality: Mouse monoclonal antibody

Clone ID: 24GB7075

Species Reactivity: Human

Applications Tested: Western blotting (WB), immunocytochemistry (IC)

Immunogen

Recombinant protein of human MYBBP1A

Isotype

Mouse IgG1 kappa

Storage Buffer

Supplied in PBS (pH 7.4) containing 50% glycerol, and 0.02% sodium azide.

Storage

Store at -20 °C for one year.

Recommended Dilutions

Western Blotting (WB): 1:1,000-1:5,000

Immunocytochemistry (IC): 1:100-1:1,000

Note: This product is for research use only.

Validation Data

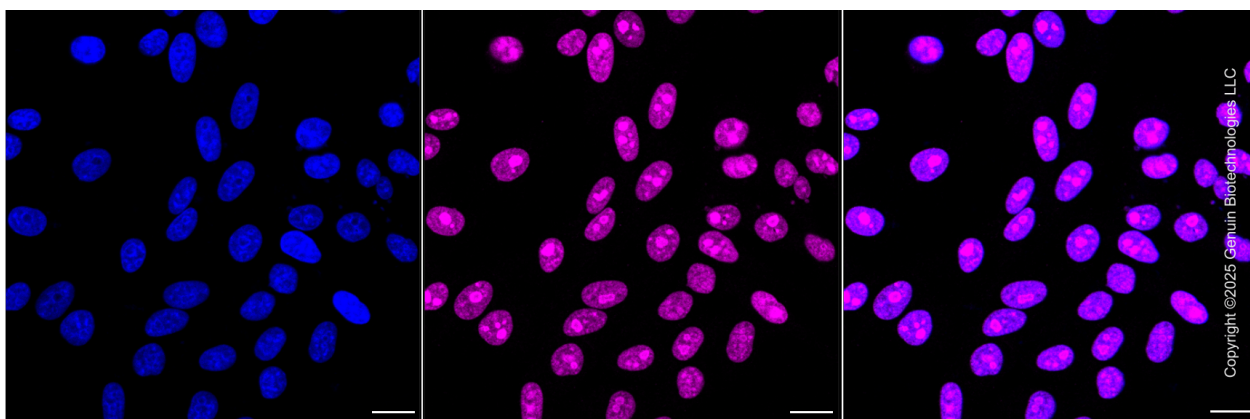
SUPPORT

SUPPORT@GENUINBIOTECH.COM
TEL: +1-540-855-7041

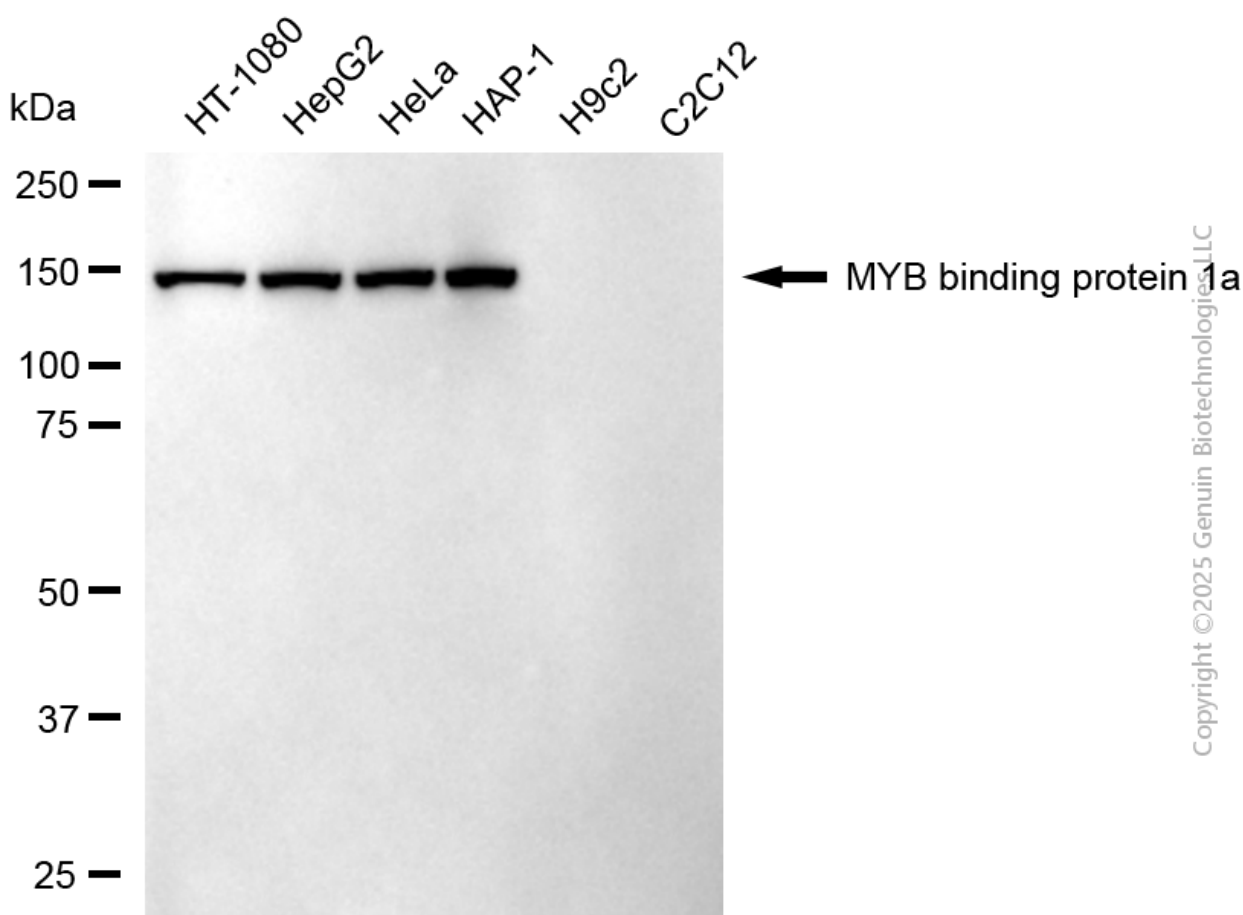
ORDERS

SALES@GENUINBIOTECH.COM
FAX: +1-540-855-7041

WWW.GENUINBIOTECH.COM



Immunocytochemical staining of HepG2 cells with anti-MYB binding protein 1a antibody (Cat#3720, 1:1000). Nuclei were stained blue with DAPI; MYB binding protein 1a was stained magenta with Alexa Fluor® 647. Images were taken using Leica stellaris 5. Protein abundance based on laser Intensity and smart gain: High. Scale bar, 20 μ m.



Western blotting analysis using anti-MYB binding protein 1a antibody (Cat#3720). Total cell lysates (30 μ g) from various cell lines were loaded and separated by SDS-PAGE. The blot was incubated with anti-MYB binding protein 1a antibody (Cat#3720, 1:5,000) and HRP-conjugated goat anti-mouse secondary antibody (Cat#101, 1:20,000) respectively. Image was developed using

Anti-MYB Binding Protein 1a Mouse Monoclonal Antibody

PAGE 3

NaQ™ ECL Substrate Kit (Cat#716).

SUPPORT

SUPPORT@GENUINBIOTECH.COM
TEL: +1-540-855-7041

ORDERS

SALES@GENUINBIOTECH.COM
FAX: +1-540-855-7041

WWW.GENUINBIOTECH.COM